

LEA Name : Manheim Township SD
Address : PO Box 5134
Lancaster , PA 17606

County : Lancaster
AUN Number : 113364503
LEA Type : SD

**Annual Financial Report
Accuracy Certification Statement**

For Fiscal Year Ending

6/30/2022

Pennsylvania Department of Education

&

Office of Comptroller Operations

PDE-2056: Intermediate Unit

PDE-2057: School District, AVTS/CTC, Charter School,
and Special Program Jointure

CERTIFICATION: By signing this page I agree that the electronic data submitted is a complete and accurate statement of the financial operations and status of the local education agency for the fiscal year. It has been prepared in accordance with generally accepted accounting principles and established Commonwealth of PA reporting guidelines.



Chief School Administrator Signature



Date



Board Secretary Signature



Date

Steve Brubaker

Contact Person

brubakst@mtwp.net

Contact Person E-mail Address

(717)569-8231

Ext :3113

Contact Person Telephone Number

(717)569-3729

Contact Person Fax Number

Audit Certification
Annual Financial Report:
For Fiscal Year Ending **6/30/2022**
(Pursuant to PA School Code Section 218(b))

LEA Name : Manheim Township SD
AUN Number : 113364503
County : Lancaster

Audit Certification Due: 12/31/2022

This certification is applicable to the Annual Financial Report data submitted through the Consolidated Financial Reporting System (CFRS).

CERTIFICATION: By signing this page I agree that the financial statements of the school have been properly audited as noted above pursuant to Article XXIV, and in the auditor's professional opinion, the Annual Financial Report (PDE-2057) submitted through CFRS is materially consistent with the audited financial statements.

Chief School Administrator



Signature

12/15/2022
Date

Board Secretary



Signature

12/15/2022
Date

Steve Brubaker

Contact Person

brubakst@mtwp.net

Contact Person E-mail Address

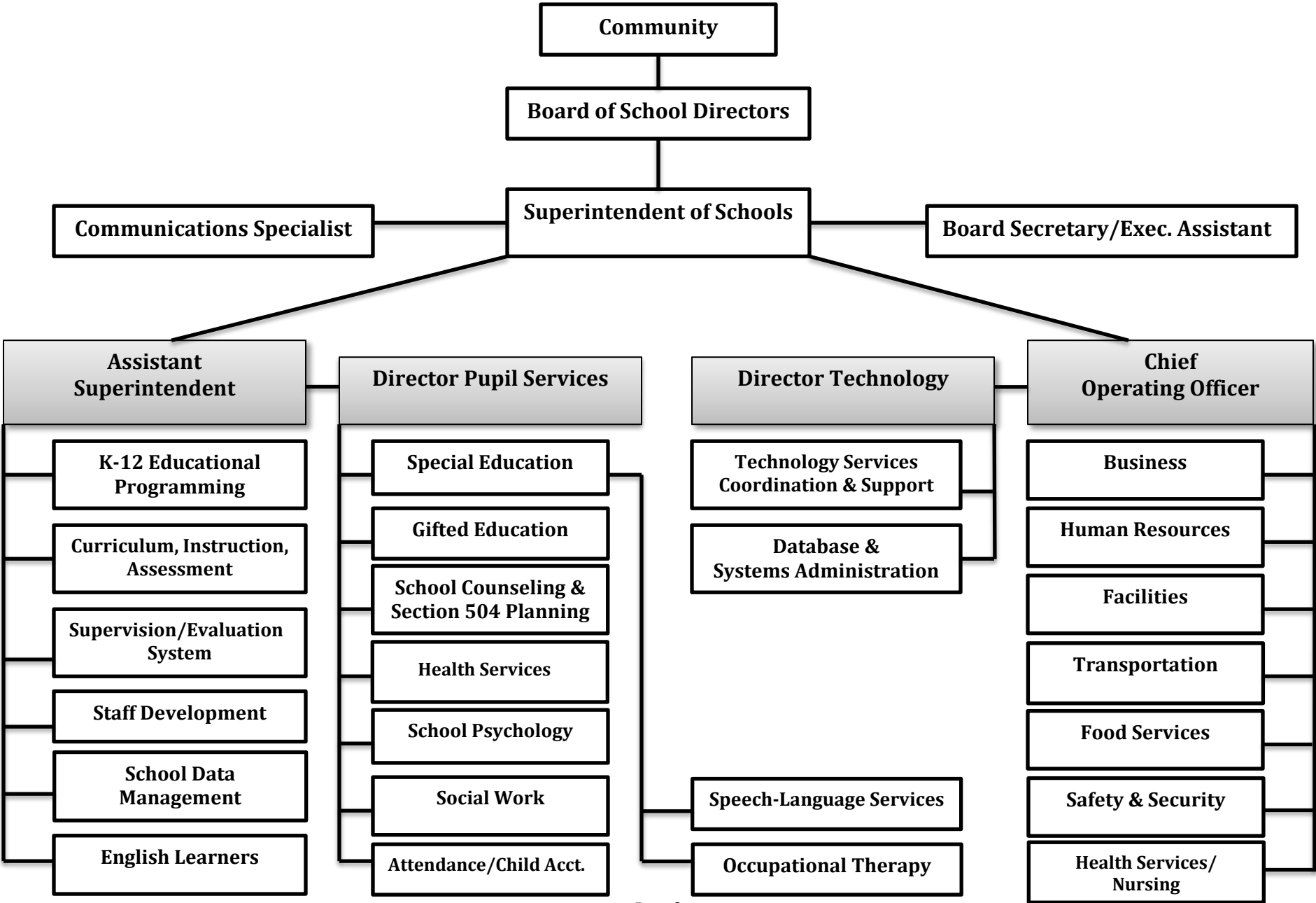
(717)569-8231 Ext :3113

Contact Person Telephone Number

(717)569-3729

Contact Person Fax Number

MANHEIM TOWNSHIP SCHOOL DISTRICT
Organizational Chart
2021-2022





Book	Policy Manual
Section	600 Finances
Title	GASB Statement 34
Code	622
Status	Active
Adopted	February 20, 2003
Last Revised	August 15, 2019

Purpose

The Board recognizes the need to implement the required accounting and financial reporting standards stipulated by the Pennsylvania Department of Education.

The primary objectives of implementing the Governmental Accounting Standards Board (GASB) Statement 34 are to assure compliance with state requirements, and properly account for both the financial and economic resources of the District.

Authority

Participation of the School District in any such activity shall be in accordance with Board policy. [1][2]

Delegation of Responsibility

The responsibility to coordinate the compilation and preparation of all information necessary to implement this policy is delegated to the Chief Operating Officer or designee.

The designated individual shall be responsible for implementing the necessary procedures to establish and maintain a fixed asset inventory, including depreciation schedules. Depreciation shall be computed on a straight-line basis over the useful lives of the assets, using an averaging convention. Normal maintenance and repairs shall be charged to expense as incurred; major renewals and betterments that materially extend the life or increase the value of the asset shall be capitalized. A schedule of accumulated depreciation shall be consistent from year to year. The basis for depreciation, including groups of assets and useful lives, shall be in writing and submitted for review to the Board.

The Chief Operating Officer or designee shall prepare the required Management Discussion and Analysis (MD&A). The MD&A shall be in the form required by GASB Statement 34 and shall be submitted to the Board for approval, prior to publication.

Prior to submission of the MD&A with the district's annual audit the district's independent auditors shall review the MD&A, in accordance with SAS No. 52, "Required Supplementary Information."

<u>Val Number</u>	<u>Description</u>	<u>Justification</u>
30145	<p>Revenue Detail – Fund 32: Revenue has been entered in account 6991 – Refunds of Prior Year Expenditures. Please provide a description of the refund and verify that the initial expenditure was made from Fund 32.</p> <p>Revenue Detail 6991, Fund 32: \$202,425.35</p>	<p>During the 2020-2021 fiscal year, the District paid for a network upgrade out of its capital reserve fund. This project utilized E-Rate funding. During the 2021-2022 fiscal year, the District received the E-Rate proceeds related to this project.</p>
30149	<p>Revenue Detail: An amount has been reported in revenue code 6839. Any revenue received from another PA LEA (Intermediate Units, School Districts, Charter Schools, and Career Technology Centers) should be reported in the most applicable account 6831, 6832, 6833, 6834, and/or 6836. Please correct or provide a justification if no revenue reported in 6839 was received from another LEA.</p>	<p>The District received ACCESS reimbursement funds and was told by the intermediate unit sending the funds they should be recorded to function 6839.</p>
41162	<p>Expenditure Detail, Salaries (Object 100) and Benefits (Object 200 series): Amounts must be entered for both Salaries and Benefits.</p> <p>Please verify following fund and function codes: Fund 10 Function 2390;</p>	<p>Function 2390 represents travel insurance coverage for administrators.</p>

Amounts Expressed in Whole Dollars

<u>General Fund</u> <u>(10)</u>	<u>Student Sponsored</u> <u>Activity Fund</u> <u>(21)</u>	<u>Public Purpose Trust</u> <u>(27)</u>	<u>Other Compt Approved</u> <u>(28)</u>	<u>Athletic / Activity</u> <u>(29)</u>
------------------------------------	---	--	--	---

Assets And Deferred Outflows Of Resources

Assets

0100 Cash and Cash Equivalents	20,130,581
0110 Investments	6,509,369
0120 Taxes Receivable	659,312
0130 Due From Other Funds	2,373
0141 Due From Other Governments	2,134,088
0142 State Revenue Receivable	3,475,959
0143 Federal Revenue Receivable	1,578,739
0145 Other Intergovernmental Revenue Receivable	
0146 Due from Primary Government	
0147 Due from Component Unit	
0150 Other Receivables	1,724,589
0170 Inventories	5,749
0180 Prepaid Expenses (Expenditures)	64,704
0190 Other Current Assets	

Total Assets	\$36,285,463
---------------------	---------------------

0910 Deferred Outflows of Resources

Total Assets And Deferred Outflows Of Resources	\$36,285,463
--	---------------------

Amounts Expressed in Whole Dollars	<u>Capital Reserve (690.</u> <u>1850)</u> <u>(31)</u>	<u>Capital Reserve (1431)</u> <u>(32)</u>	<u>Other Capital Projects</u> <u>Fund</u> <u>(39)</u>	<u>Debt Service</u> <u>(40)</u>	<u>Permanent</u> <u>(90)</u>
Assets And Deferred Outflows Of Resources					
Assets					
0100 Cash and Cash Equivalents		3,427,664	1,356,479		
0110 Investments		3,004,207	16,022,209		
0120 Taxes Receivable					
0130 Due From Other Funds		2,000,000			
0141 Due From Other Governments					
0142 State Revenue Receivable					
0143 Federal Revenue Receivable					
0145 Other Intergovernmental Revenue Receivable					
0146 Due from Primary Government					
0147 Due from Component Unit					
0150 Other Receivables					
0170 Inventories					
0180 Prepaid Expenses (Expenditures)					
0190 Other Current Assets					
Total Assets		\$8,431,871	\$17,378,688		
0910 Deferred Outflows of Resources					
Total Assets And Deferred Outflows Of Resources		\$8,431,871	\$17,378,688		

Amounts Expressed in Whole Dollars

Total Governmental Funds

Assets And Deferred Outflows Of Resources

Assets	
0100 Cash and Cash Equivalents	24,914,724
0110 Investments	25,535,785
0120 Taxes Receivable	659,312
0130 Due From Other Funds	2,002,373
0141 Due From Other Governments	2,134,088
0142 State Revenue Receivable	3,475,959
0143 Federal Revenue Receivable	1,578,739
0145 Other Intergovernmental Revenue Receivable	
0146 Due from Primary Government	
0147 Due from Component Unit	
0150 Other Receivables	1,724,589
0170 Inventories	5,749
0180 Prepaid Expenses (Expenditures)	64,704
0190 Other Current Assets	
Total Assets	\$62,096,022
0910 Deferred Outflows of Resources	
Total Assets And Deferred Outflows Of Resources	\$62,096,022

Amounts Expressed in Whole Dollars	<u>General Fund</u> <u>(10)</u>	<u>Student Sponsored</u> <u>Activity Fund</u> <u>(21)</u>	<u>Public Purpose Trust</u> <u>(27)</u>	<u>Other Compt Approved</u> <u>(28)</u>	<u>Athletic / Activity</u> <u>(29)</u>
Liabilities And Deferred Inflows Of Resources And Fund Balances					
Liabilities					
0400 Due to Other Funds	2,359,378				
0411 Due to Other Governments	244,313				
0412 Due to Primary Government					
0413 Due to Component Unit					
0420 Accounts Payable	1,113,944				
0430 Contracts Payable					
0440 Current Portion of Long-Term Debt					
0450 Short-Term Payables					
0461 Accrued Salaries and Benefits	6,786,813				
0462 Payroll Deductions and Withholding	4,493,658				
0480 Unearned Revenues	56,971				
0490 Other Current Liabilities	101,579				
Total Liabilities	\$15,156,656				
0950 Deferred Inflows of Resources	2,046,659				
Fund Balances					
0810 Nonspendable Fund Balance	70,453				
0820 Restricted Fund Balance					
0830 Committed Fund Balance	9,555,262				
0840 Assigned Fund Balance	840,128				
0850 Unassigned Fund Balance	8,616,305				
Total Fund Balances	\$19,082,148				
Total Liabilities, Deferred Inflows Of Resources And Fund Balances	\$36,285,463				

Amounts Expressed in Whole Dollars

<u>Capital Reserve (690.</u>	<u>Capital Reserve (1431)</u>	<u>Other Capital Projects</u>	<u>Debt Service</u>	<u>Permanent</u>
<u>1850)</u>	<u>(32)</u>	<u>Fund</u>	<u>(40)</u>	<u>(90)</u>
<u>(31)</u>		<u>(39)</u>		

Liabilities And Deferred Inflows Of Resources And Fund Balances

Liabilities

0400 Due to Other Funds		
0411 Due to Other Governments		
0412 Due to Primary Government		
0413 Due to Component Unit		
0420 Accounts Payable	358,791	2,602,737
0430 Contracts Payable		
0440 Current Portion of Long-Term Debt		
0450 Short-Term Payables		
0461 Accrued Salaries and Benefits		
0462 Payroll Deductions and Withholding		
0480 Unearned Revenues		
0490 Other Current Liabilities		

Total Liabilities	\$358,791	\$2,602,737
--------------------------	------------------	--------------------

0950 Deferred Inflows of Resources

Fund Balances

0810 Nonspendable Fund Balance		
0820 Restricted Fund Balance	8,073,080	14,775,951
0830 Committed Fund Balance		
0840 Assigned Fund Balance		
0850 Unassigned Fund Balance		

Total Fund Balances	\$8,073,080	\$14,775,951
----------------------------	--------------------	---------------------

Total Liabilities, Deferred Inflows Of Resources And Fund Balances	\$8,431,871	\$17,378,688
---	--------------------	---------------------

Amounts Expressed in Whole Dollars

Total Governmental Funds

Liabilities And Deferred Inflows Of Resources And Fund Balances

Liabilities

0400 Due to Other Funds	2,359,378
0411 Due to Other Governments	244,313
0412 Due to Primary Government	
0413 Due to Component Unit	
0420 Accounts Payable	4,075,472
0430 Contracts Payable	
0440 Current Portion of Long-Term Debt	
0450 Short-Term Payables	
0461 Accrued Salaries and Benefits	6,786,813
0462 Payroll Deductions and Withholding	4,493,658
0480 Unearned Revenues	56,971
0490 Other Current Liabilities	101,579

Total Liabilities \$18,118,184

0950 Deferred Inflows of Resources	2,046,659
------------------------------------	-----------

Fund Balances

0810 Nonspendable Fund Balance	70,453
0820 Restricted Fund Balance	22,849,031
0830 Committed Fund Balance	9,555,262
0840 Assigned Fund Balance	840,128
0850 Unassigned Fund Balance	8,616,305

Total Fund Balances \$41,931,179

Total Liabilities, Deferred Inflows Of Resources And Fund Balances \$62,096,022

Amounts Expressed in Whole Dollars	<u>General Fund</u> <u>(10)</u>	<u>Student Sponsored</u> <u>Activity Fund</u> <u>(21)</u>	<u>Public Purpose Trust</u> <u>(27)</u>	<u>Other Compt Approved</u> <u>(28)</u>	<u>Athletic / Activity</u> <u>(29)</u>
Revenues					
6000 Revenue from Local Sources	83,241,799				
7000 Revenue from State Sources	22,053,880				
8000 Revenue from Federal Sources	3,517,553				
Total Revenues	\$108,813,232				
Expenditures					
1000 Instruction	57,226,775				
2000 Support Services	31,931,209				
3000 Operation of Non-Instructional Services	1,599,741				
4000 Facilities Acquisition, Construction and Improvement Services					
5110 Debt Service	14,174,143				
5130 Refund of Prior Year Revenues / Receipts	7,518				
5140 Leases	102,226				
Total Expenditures	\$105,041,612				
Excess (Deficiency) Of Revenues Over Expenditures	\$3,771,620				
Other Financing Sources (Uses)					
9110 Face Value of Bonds Issued					
9120 Proceeds from Refunding of Bonds					
9130 Bond Premiums					
9200 Proceeds from Extended-Term Financing and Leases	2,298,751				
9300 Interfund Transfers - IN					
9400 Sale of or Compensation for Loss of Fixed Assets	757,076				
9710 Transfers from Component Units					
9720 Transfers from Primary Governments					
9910 Other Financing Sources Not Listed in the 9000 Series					
9990 Insurance Recoveries	49,433				
5120 Debt Service – Refunded Bonds					
5150 Bond Discounts					
5200 Interfund Transfers – Out	3,991,378				
5300 Transfers Out to Component Units/Primary Governments					
Total Other Financing Sources (Uses)	(\$886,118)				

Amounts Expressed in Whole Dollars	<u>Capital Reserve (690.1850)</u> <u>(31)</u>	<u>Capital Reserve (1431)</u> <u>(32)</u>	<u>Other Capital Projects</u> <u>Fund</u> <u>(39)</u>	<u>Debt Service</u> <u>(40)</u>	<u>Permanent</u> <u>(90)</u>
Revenues					
6000 Revenue from Local Sources		207,772	25,733		
7000 Revenue from State Sources					
8000 Revenue from Federal Sources					
Total Revenues		\$207,772	\$25,733		
Expenditures					
1000 Instruction			3,923,546		
2000 Support Services			229,004		
3000 Operation of Non-Instructional Services					
4000 Facilities Acquisition, Construction and Improvement Services		2,657,150	10,677,621		
5110 Debt Service				12,177	
5130 Refund of Prior Year Revenues / Receipts					
5140 Leases					
Total Expenditures		\$2,657,150	\$14,830,171	\$12,177	
Excess (Deficiency) Of Revenues Over Expenditures		(\$2,449,378)	(\$14,804,438)	(\$12,177)	
Other Financing Sources (Uses)					
9110 Face Value of Bonds Issued			16,920,000		
9120 Proceeds from Refunding of Bonds					
9130 Bond Premiums			3,314,192		
9200 Proceeds from Extended-Term Financing and Leases			3,923,546		
9300 Interfund Transfers - IN		3,991,378			
9400 Sale of or Compensation for Loss of Fixed Assets					
9710 Transfers from Component Units					
9720 Transfers from Primary Governments					
9910 Other Financing Sources Not Listed in the 9000 Series					
9990 Insurance Recoveries					
5120 Debt Service – Refunded Bonds					
5150 Bond Discounts					
5200 Interfund Transfers – Out					
5300 Transfers Out to Component Units/Primary Governments					
Total Other Financing Sources (Uses)		\$3,991,378	\$24,157,738		

Amounts Expressed in Whole Dollars	<u>Total Governmental Funds</u>
Revenues	
6000 Revenue from Local Sources	83,475,304
7000 Revenue from State Sources	22,053,880
8000 Revenue from Federal Sources	3,517,553
Total Revenues	\$109,046,737
Expenditures	
1000 Instruction	61,150,321
2000 Support Services	32,160,213
3000 Operation of Non-Instructional Services	1,599,741
4000 Facilities Acquisition, Construction and Improvement Services	13,334,771
5110 Debt Service	14,186,320
5130 Refund of Prior Year Revenues / Receipts	7,518
5140 Leases	102,226
Total Expenditures	\$122,541,110
Excess (Deficiency) Of Revenues Over Expenditures	(\$13,494,373)
Other Financing Sources (Uses)	
9110 Face Value of Bonds Issued	16,920,000
9120 Proceeds from Refunding of Bonds	
9130 Bond Premiums	3,314,192
9200 Proceeds from Extended-Term Financing and Leases	6,222,297
9300 Interfund Transfers - IN	3,991,378
9400 Sale of or Compensation for Loss of Fixed Assets	757,076
9710 Transfers from Component Units	
9720 Transfers from Primary Governments	
9910 Other Financing Sources Not Listed in the 9000 Series	
9990 Insurance Recoveries	49,433
5120 Debt Service – Refunded Bonds	
5150 Bond Discounts	
5200 Interfund Transfers – Out	3,991,378
5300 Transfers Out to Component Units/Primary Governments	
Total Other Financing Sources (Uses)	\$27,262,998

Amounts Expressed in Whole Dollars	<u>General Fund</u> <u>(10)</u>	<u>Student Sponsored</u> <u>Activity Fund</u> <u>(21)</u>	<u>Public Purpose Trust</u> <u>(27)</u>	<u>Other Compt Approved</u> <u>(28)</u>	<u>Athletic / Activity</u> <u>(29)</u>
Special And Extraordinary Items					
9920 Special Items – Gains					
9930 Extraordinary Items – Gains					
5520 Special Items – Losses					
5530 Extraordinary Items – Losses					
Net Change In Fund Balances	\$2,885,502				
Fund Balance					
0001 Fund Balance - Beginning of Fiscal Year	16,196,646				
Fund Balance - End Of Year	\$19,082,148				

Amounts Expressed in Whole Dollars	<u>Capital Reserve (690.1850)</u> <u>(31)</u>	<u>Capital Reserve (1431)</u> <u>(32)</u>	<u>Other Capital Projects</u> <u>Fund</u> <u>(39)</u>	<u>Debt Service</u> <u>(40)</u>	<u>Permanent</u> <u>(90)</u>
Special And Extraordinary Items					
9920 Special Items – Gains					
9930 Extraordinary Items – Gains					
5520 Special Items – Losses					
5530 Extraordinary Items – Losses					
Net Change In Fund Balances		\$1,542,000	\$9,353,300	(\$12,177)	
Fund Balance					
0001 Fund Balance - Beginning of Fiscal Year		6,531,080	5,422,651	12,177	
Fund Balance - End Of Year		\$8,073,080	\$14,775,951		

Amounts Expressed in Whole Dollars	<u>Total Governmental Funds</u>
Special And Extraordinary Items	
9920 Special Items – Gains	
9930 Extraordinary Items – Gains	
5520 Special Items – Losses	
5530 Extraordinary Items – Losses	
Net Change In Fund Balances	\$13,768,625
Fund Balance	
0001 Fund Balance - Beginning of Fiscal Year	28,162,554
Fund Balance - End Of Year	\$41,931,179

Amounts Expressed in Whole Dollars	<u>Food Service</u> <u>(51)</u>	<u>Child Care</u> <u>Operations</u> <u>(52)</u>	<u>Other Enterprise</u> <u>(58)</u>	<u>TOTAL</u>	<u>Internal Service</u> <u>(60)</u>
Assets And Deferred Outflows Of Resources					
Current Assets					
0100 Cash and Cash Equivalents	2,257,407			2,257,407	1,173,207
0110 Investments					
0130 Due From Other Funds					358,298
0141 Due From Other Governments	8,154			8,154	46,547
0142 State Revenue Receivable	4,965			4,965	
0143 Federal Revenue Receivable	52,360			52,360	
0146 Due from Primary Government					
0147 Due from Component Unit					
0150 Other Receivables	2,019			2,019	
0170 Inventories	92,703			92,703	
0180 Prepaid Expenses (Expenditures)					14,086
0190 Other Current Assets					
Total Current Assets	\$2,417,608			\$2,417,608	\$1,592,138
Noncurrent Assets					
0211 Land					
0212 Site Improvements (Net)					
0220 Buildings and Building Improvements (Net)					
0230 Machinery, Equipment and Furniture (Net)	259,493			259,493	
0250 Construction in Progress					
0260 Long Term Prepayments					
0290 Other Noncurrent Assets					
Total Noncurrent Assets	\$259,493			\$259,493	
0910 Deferred Outflows of Resources	472,132			472,132	
Total Assets And Deferred Outflows Of Resources	\$3,149,233			\$3,149,233	\$1,592,138

Amounts Expressed in Whole Dollars	<u>Food Service</u> <u>(51)</u>	<u>Child Care</u> <u>Operations</u> <u>(52)</u>	<u>Other Enterprise</u> <u>(58)</u>	<u>TOTAL</u>	<u>Internal Service</u> <u>(60)</u>
Liabilities And Deferred Inflows Of Resources And Net Position					
Current Liabilities					
0400 Due to Other Funds	2,374			2,374	
0411 Due to Other Governments					
0413 Due to Component Unit					
0420 Accounts Payable	13,965			13,965	630,140
0430 Contracts Payable					
0440 Current Portion of Long-Term Debt					
0450 Short-Term Payables					
0461 Accrued Salaries and Benefits	51,064			51,064	
0462 Payroll Deductions and Withholding					
0480 Unearned Revenues	68,290			68,290	30,876
0490 Other Current Liabilities	136			136	
Total Current Liabilities	\$135,829			\$135,829	\$661,016
Noncurrent Liabilities					
0510 Bonds Payable					
0520 Extended-Term Financing Agreements Payable					
0530 Lease Obligations					
0540 Accumulated Compensated Absences					
0550 Authority Lease Obligations					
0560 Other Post-Employment Benefits (OPEB)	177,800			177,800	
0570 Net Pension Liability	2,382,000			2,382,000	
0599 Other Noncurrent Liabilities					
Total Noncurrent Liabilities	\$2,559,800			\$2,559,800	
Total Liabilities	\$2,695,629			\$2,695,629	\$661,016
0950 Deferred Inflows of Resources	496,653			496,653	
Net Position					
0791 Net Investment in Capital Assets	259,493			259,493	
0008 Restricted Net Position (0792 – 0798)					
0799 Unrestricted Net Position	(302,542)			(302,542)	931,122
Total Net Position	(\$43,049)			(\$43,049)	\$931,122
Total Liabilities And Deferred Inflows Of Resources And Net Position	\$3,149,233			\$3,149,233	\$1,592,138

Amounts Expressed in Whole Dollars	<u>Food Service</u> <u>(51)</u>	<u>Child Care Operations</u> <u>(52)</u>	<u>Other Enterprise</u> <u>(58)</u>	<u>TOTAL</u>	<u>Internal Service</u> <u>(60)</u>
Operating Revenues					
6600 Food Service Revenue	301,355			301,355	
0071 Charges for Services	39,909			39,909	8,460,521
0072 Other Operating Revenue					
Total Operating Revenues	\$341,264			\$341,264	\$8,460,521
Operating Expenses					
100 Personnel Services – Salaries	967,428			967,428	
200 Personnel Services – Employee Benefits	563,842			563,842	8,502,275
300 Purchased Professional and Technical Services	685			685	
400 Purchased Property Services	45,557			45,557	
500 Other Purchased Services	2,776			2,776	
600 Supplies	1,678,908			1,678,908	
740 Depreciation	93,221			93,221	
810 Dues and Fees	2,384			2,384	4,524
880 Refunds of Prior Years' Receipts					
890 Miscellaneous Expenditures					
Total Operating Expenses	\$3,354,801			\$3,354,801	\$8,506,799
Operating Income (Loss)	(\$3,013,537)			(\$3,013,537)	(\$46,278)
Non Operating Revenues (Expenses)					
6500 Earnings on Investments	619			619	389
6920 Contributions and Donations from Private Sources	10,514			10,514	
6930 Gains or Losses on Sale of Fixed Assets	3,104			3,104	
6991 Refunds of a Prior Year Expenditure					6,245
7000 Revenue from State Sources	308,652			308,652	
8000 Revenue from Federal Sources	3,983,719			3,983,719	
9990 Insurance Recoveries					
820 Claims and Judgments Against the LEA					
830 Interest					
TOTAL Non Operating Revenues (Expenses)	\$4,306,608			\$4,306,608	\$6,634
Income (Loss) Before Contributions And Transfers	\$1,293,071			\$1,293,071	(\$39,644)

Amounts Expressed in Whole Dollars	<u>Food Service</u> <u>(51)</u>	<u>Child Care Operations</u> <u>(52)</u>	<u>Other Enterprise</u> <u>(58)</u>	<u>TOTAL</u>	<u>Internal Service</u> <u>(60)</u>
Contributions, Transfers, and Special and Extraordinary Items					
5200 Interfund Transfers – Out					
5300 Transfers Out to Component Units/Primary Governments					
5520 Special Items – Losses					
5530 Extraordinary Items – Losses					
9300 Interfund Transfers - IN					
9500 Capital Contributions					
9700 Transfers IN From Component Units/Primary Governments					
9920 Special Items – Gains					
9930 Extraordinary Items – Gains					
Change In Net Position	\$1,293,071			\$1,293,071	(\$39,644)
0002 Net Position - Beginning of Fiscal Year	(1,336,120)			(1,336,120)	970,766
0003 Accounting Changes / Residual Equity Transfers					
Net Position - End Of Year	(\$43,049)			(\$43,049)	\$931,122

Amounts Expressed in Whole Dollars	<u>Food Service</u> <u>(51)</u>	<u>Child Care Operations</u> <u>(52)</u>	<u>Other Enterprise</u> <u>(58)</u>	<u>TOTAL</u>	<u>Internal Service(60)</u>
Cash Flows From Operating Activities					
0011 Cash Receipts From Users	276,676			276,676	
0012 Cash Receipts From Assessments Made to Other Funds					9,196,531
0013 Cash Receipts From Earnings on Investments					
0014 Cash Receipts From Other Operating Revenue	39,909			39,909	
0015 Cash Payments To Employees For Services	1,643,161			1,643,161	
0016 Cash Payments For Insurance Claims					8,486,773
0017 Cash Payments To Suppliers For Goods and Services	1,588,805			1,588,805	4,524
0018 Cash Payments For Other Operating Expenses					
Net Cash Provided By (Used For) Operating Activities	(\$2,915,381)			(\$2,915,381)	\$705,234
Cash Flows From Non-Capital Financing Activities					
0021 Receipts From Local Sources - 6000	3,608			3,608	
0022 Receipts From State Sources - 7000	308,102			308,102	
0023 Receipts From Federal Sources -8000	3,802,298			3,802,298	
0024 Notes and Loans Received (Repaid)					
0025 Interest Paid on Notes/Loans - 5100-830					
0026 Operating Transfers In (Out)/Residual Equity Trans					
0027 Operating Transfers In (Out) Primary Government / Comp Unit					
0028 Receipts From Refund of Prior Year Expenditures - 6991					6,245
0029 Special and Extraordinary Gains (losses)					
0030 Receipts from Insurance Recoveries -9990					
Net Cash Prov By (Used for) Non-Capital Financing Activities	\$4,114,008			\$4,114,008	\$6,245
Cash Flows From Capital and Related Financing Activities					
0031 Payments For Fac Acq, Const, and Imp - 4000					
0032 Gain / (Loss) on Sale of Fixed Assets - 6930	3,104			3,104	
0033 Proceeds From Extended Term Financing - 9200					
0034 Principal Paid on Financing Agreements	(10,968)			(10,968)	
0035 Interest Paid on Financing Agreements - 5100-830					
0036 (Inc) Dec in Contributed Capital					
Net Cash Prov By (Used for) Capital and Related Financing Activities	(\$7,864)			(\$7,864)	
Cash Flows From Investing Activities					
0041 Earnings on Investments - 6500	619			619	389
0042 Purchase of Inv Securities / Deposits to Inv Pools					
0043 Receipts From Investment Pool Withdrawals					
0044 Proceeds from Sale and Maturity of Inv Securities					

LEA : 113364503 Manheim Township SD

Printed 11/21/2022 11:40:22 AM

0045 Loans Received (Paid)

Net Cash Prov By (Used for) Investing Activities	\$619	\$619	\$389
---	--------------	--------------	--------------

	<u>Food Service</u> <u>(51)</u>	<u>Child Care Operations</u> <u>(52)</u>	<u>Other Enterprise</u> <u>(58)</u>	<u>TOTAL</u>	<u>Internal Service</u> <u>(60)</u>
Net Increase (Decrease) in Cash Flows	1,191,382			1,191,382	711,868
0004 Cash and Cash Equivalents Beginning of Year	1,066,025			1,066,025	461,339
Cash and Cash Equivalents at Year End	\$2,257,407			\$2,257,407	\$1,173,207
<hr/>					
Reconciliation of Operating Income (Loss) To Net Cash Provided by (Used For) Operating Activities					
0005 Operating Income (Loss) per REP	(3,013,537)			(3,013,537)	(46,278)
Adjustments					
0051 Depreciation and Net Amortization	93,221			93,221	
0052 Provision for Uncollectible Accounts					
0053 Other Adjustments	202,090			202,090	
Effect of Changes in Assets, Liabilities, Deferred Outflows and Deferred Inflows					
0054 (Inc) Dec In Accounts Receivable (0120-0150)	(1,578)			(1,578)	
0055 Advances to Other Funds (0160)					717,912
0056 (Inc) Dec in Inventories (0170)	(39,991)			(39,991)	
0057 (Inc) Dec in Prepaid Expenses (0180)					39,878
0058 (Inc) Dec in Other Current or Noncurrent Assets					
0064 Deferred Outflows (0910)	33,763			33,763	
0059 Inc (Dec) in Accounts Payable (0400-0450)	(20,644)			(20,644)	(24,376)
0060 Inc (Dec) in Accrued Salaries/Benefits (0461)	6,079			6,079	
0065 Inc (Dec) in Net Pension Liabilities (0570)	(494,000)			(494,000)	
0066 Inc (Dec) in Other Postemp Benefit Oblig (0560)	(4,675)			(4,675)	
0061 Inc (Dec) in Payroll Deductions/Withholding (0462)					
0062 Inc (Dec) in Unearned Revenue (0480)	(23,101)			(23,101)	18,098
0063 Inc (Dec) in Other Current or Noncurrent Liabilities	50			50	
0067 Deferred Inflows (0950)	346,942			346,942	
Total Adjustments	\$98,156			\$98,156	\$751,512
Cash Provided By (Used for) Total	(\$2,915,381)			(\$2,915,381)	\$705,234

**COMBINED STATEMENT OF CASH FLOWS
SCHEDULE OF NONCASH INVESTING, CAPITAL, AND FINANCING ACTIVITIES**

Explanation of Transaction and Balance Sheet Effect	Amount
Total	

LEA : 113364503 Manheim Township SD

Printed 11/21/2022 11:40:24 AM

Amounts Expressed in Whole Dollars	<u>Private Purpose Trust</u> <u>(71)</u>	<u>Investment Trust</u> <u>(72)</u>	<u>Pension Trust</u> <u>(73)</u>	<u>Student Activity Custodial</u> <u>(81)</u>
Assets And Deferred Outflows Of Resources				
Assets				
0100 Cash and Cash Equivalents	182,594			166,162
0110 Investments	8,600			
0130 Due From Other Funds				1,081
0140 Due from Other Governments, Primary Government and Component Units				
0150 Other Receivables				
0170 Inventories				
0180 Prepaid Expenses (Expenditures)				
0190 Other Current Assets				
0220 Buildings and Building Improvements (Net)				
0230 Machinery, Equipment and Furniture (Net)				
Total Assets	\$191,194			\$167,243
0910 Deferred Outflows of Resources				
Total Assets And Deferred Outflows Of Resources	\$191,194			\$167,243

LEA : 113364503 Manheim Township SD

Printed 11/21/2022 11:40:24 AM

Amounts Expressed in Whole Dollars

Other Custodial Fiduciary Component Units Total Fiduciary Funds
(89) (98)

Assets And Deferred Outflows Of Resources

Assets

0100 Cash and Cash Equivalents		348,756
0110 Investments		8,600
0130 Due From Other Funds		1,081
0140 Due from Other Governments, Primary Government and Component Units		
0150 Other Receivables		
0170 Inventories		
0180 Prepaid Expenses (Expenditures)		
0190 Other Current Assets		
0220 Buildings and Building Improvements (Net)		
0230 Machinery, Equipment and Furniture (Net)		

Total Assets **\$358,437**

0910 Deferred Outflows of Resources

Total Assets And Deferred Outflows Of Resources **\$358,437**

LEA : 113364503 Manheim Township SD

Printed 11/21/2022 11:40:24 AM

Amounts Expressed in Whole Dollars	<u>Private Purpose Trust</u> (71)	<u>Investment Trust</u> (72)	<u>Pension Trust</u> (73)	<u>Student Activity Custodial</u> (81)
Liabilities, Deferred Inflows Of Resources And Net Position				
Liabilities				
0400 Due to Other Funds				
0410 Due to Other Governments, Primary Government and Component Units				
0420 Accounts Payable				11,669
0430 Contracts Payable				
0450 Short-Term Payables				
0460 Payroll Accruals and Withholdings				
0480 Unearned Revenues				
0490 Other Current Liabilities				
Total Liabilities				\$11,669
0950 Deferred Inflows of Resources				
Net Position				
0791 Net Investment in Capital Assets				
0009 Restricted Net Position (0792 – 0798)	191,194			155,574
0799 Unrestricted Net Position				
Total Net Position	\$191,194			\$155,574
Total Liabilities, Deferred Inflows Of Resources And Net Position	\$191,194			\$167,243

LEA : 113364503 Manheim Township SD

Printed 11/21/2022 11:40:24 AM

Amounts Expressed in Whole Dollars	<u>Other Custodial</u> <u>(89)</u>	<u>Fiduciary Component Units</u> <u>(98)</u>	<u>Total Fiduciary Funds</u>
Liabilities, Deferred Inflows Of Resources And Net Position			
Liabilities			
0400 Due to Other Funds			
0410 Due to Other Governments, Primary Government and Component Units			
0420 Accounts Payable			11,669
0430 Contracts Payable			
0450 Short-Term Payables			
0460 Payroll Accruals and Withholdings			
0480 Unearned Revenues			
0490 Other Current Liabilities			
Total Liabilities			\$11,669
0950 Deferred Inflows of Resources			
Net Position			
0791 Net Investment in Capital Assets			
0009 Restricted Net Position (0792 – 0798)			346,768
0799 Unrestricted Net Position			
Total Net Position			\$346,768
Total Liabilities, Deferred Inflows Of Resources And Net Position			\$358,437

Amounts Expressed in Whole Dollars	<u>Private Purpose Trust</u> <u>(71)</u>	<u>Investment Trust</u> <u>(72)</u>	<u>Pension Trust</u> <u>(73)</u>	<u>Student Activity</u> <u>Custodial</u> <u>(81)</u>	<u>Other Custodial</u> <u>(89)</u>	<u>Fiduciary Component</u> <u>Units</u> <u>(98)</u>
Additions						
0091 Gifts and Contributions	13,425					
0095 Net Investment Earnings	122					
0092 Other Additions				173,027		
Deductions						
0093 Scholarships Awarded	11,121					
0094 Other Deductions				174,987		
Change In Net Position	\$2,426			(\$1,960)		
0006 Net Position – Beginning of Fiscal Year	188,768			157,534		
0007 Net Position Held in Trust for Pension Benefits						
Net Position - End of Fiscal Year	\$191,194			\$155,574		

Amounts Expressed in Whole Dollars	<u>Total Fiduciary Funds</u>
Additions	
0091 Gifts and Contributions	13,425
0095 Net Investment Earnings	122
0092 Other Additions	173,027
Deductions	
0093 Scholarships Awarded	11,121
0094 Other Deductions	174,987
Change In Net Position	\$466
0006 Net Position – Beginning of Fiscal Year	346,302
0007 Net Position Held in Trust for Pension Benefits	
Net Position - End of Fiscal Year	\$346,768

	<u>Revenue Reported In Current Year</u>	<u>Current Year Tax Accrual</u>	<u>Prior Year Tax Accrual</u>	<u>Taxes Collected In Current Year</u>
<u>Revenue from Local Sources</u>				
6111 Current Real Estate Taxes	68,233,888.46			68,233,888.46
6112 Interim Real Estate Taxes	477,835.99	29,665.43	103,108.56	551,279.12
6113 Public Utility Realty Taxes	75,981.68			75,981.68
6114 Payments in Lieu of Current Taxes - State / Local	261,765.47			261,765.47
6143 Current Act 511 Local Services Taxes	280,983.47	71,495.31	70,547.06	280,035.22
6151 Current Act 511 Earned Income Taxes	9,122,325.10	1,721,432.73	1,657,080.01	9,057,972.38
6153 Current Act 511 Real Estate Transfer Taxes	1,923,892.23	163,938.71	199,018.86	1,958,972.38
6411 Delinquent Real Estate Taxes	452,790.62	58,120.45	116,732.10	511,402.27
6500 Earnings on Investments	107,555.13			
6700 Revenues from LEA Activities	162,457.89			
6832 Federal IDEA Revenue Received as Pass Through	991,588.00			
6833 Federal ARRA IDEA Revenue Received as Pass Through	8,202.15			
6839 Federal Revenue Received from Other Sources	66,964.93			
6910 Rentals	360,409.14			
6920 Contributions and Donations from Private Sources	235,639.83			
6942 Summer School Tuition	79,925.52			
6944 Receipts from Other LEAs in Pennsylvania - Education	132,179.15			
6961 Transportation Services Provided Other Pennsylvania LEAs	35,073.00			
6991 Refunds of a Prior Year Expenditure	144,254.04			
6999 Other Revenues Not Specified Above	88,087.30			
TOTAL Revenue from Local Sources	\$83,241,799.10	\$2,044,652.63	\$2,146,486.59	\$80,931,296.98

**Revenue Reported
In Current Year**

Revenue from State Sources

7111 Basic Education Funding-Formula	6,744,115.84		
7112 Basic Education Funding-Social Security	1,468,969.22		
7160 Tuition for Orphans Subsidy	84,652.98		
7250 Migratory Children	1,840.00		
7271 Special Education funds for School-Aged Pupils	2,724,807.08		
7311 Pupil Transportation Subsidy	961,728.30		
7312 Nonpublic and Charter School Pupil Transportation Subsidy	110,110.00		
7320 Rental and Sinking Fund Payments / Building Reimbursement Subsidy	953,991.50		
7330 Health Services (Medical, Dental, Nurse, Act 25)	116,118.77		
7340 State Property Tax Reduction Allocation	1,152,384.50		
7505 Ready to Learn Block Grant	474,037.00		
7820 State Share of Retirement Contributions	7,261,124.88		
TOTAL Revenue from State Sources	\$22,053,880.07		

**Revenue Reported
In Current Year**

Revenue from Federal Sources

8514 NCLB, Title I - Improving the Academic Achievement of the Disadvantaged	641,811.94		
8515 NCLB, Title II - Preparing, Training and Recruiting High Quality Teachers and Principals	120,287.27		
8516 NCLB, Title III - Language Instruction for Limited English Proficient and Immigrant Students	61,736.42		
8517 NCLB, Title IV - 21St Century Schools	32,548.00		
8741 Elementary and Secondary School Emergency Relief Fund (ESSER)	908.00		
8742 Governor's Emergency Education Relief Fund (GEER)	10,840.99		
8743 ESSER II - Elementary and Secondary School Emergency Relief Fund	849,017.80		
8744 ARP ESSER - Elementary and Secondary School Emergency Relief Fund	1,666,772.57		
8751 ARP ESSER Learning Loss	67,691.84		
8752 ARP ESSER Summer Programs	14,925.76		
8753 ARP ESSER Afterschool Programs	5,934.36		
8754 ARP ESSER Homeless Children and Youth Funds	45,078.00		
TOTAL Revenue from Federal Sources	\$3,517,552.95		

**Revenue Reported
In Current Year**

Other Financing Sources

9220 Leases	2,298,751.00			
9400 Sale of or Compensation for Loss of Fixed Assets	757,076.20			
9990 Insurance Recoveries	49,432.55			
TOTAL Other Financing Sources	\$3,105,259.75			
TOTAL FROM ALL SOURCES	\$111,918,491.87	\$2,044,652.63	\$2,146,486.59	\$80,931,296.98

LEA : 113364503 Manheim Township SD

Printed 11/21/2022 11:40:31 AM

	<u>General Fund (10)</u>	<u>Student Sponsored Activity Fund (21)</u>	<u>Public Purpose Trust (27)</u>	<u>Other Compt Approved (28)</u>	<u>Athletic / Activity (29)</u>	<u>Capital Reserve (690, 1850) (31)</u>
6000 Revenue from Local Sources						
6111 Current Real Estate Taxes	68,233,888.46					
6112 Interim Real Estate Taxes	477,835.99					
6113 Public Utility Realty Taxes	75,981.68					
6114 Payments in Lieu of Current Taxes - State / Local	261,765.47					
6143 Current Act 511 Local Services Taxes	280,983.47					
6151 Current Act 511 Earned Income Taxes	9,122,325.10					
6153 Current Act 511 Real Estate Transfer Taxes	1,923,892.23					
6411 Delinquent Real Estate Taxes	452,790.62					
6500 Earnings on Investments	107,555.13					
6700 Revenues from LEA Activities	162,457.89					
6832 Federal IDEA Revenue Received as Pass Through	991,588.00					
6833 Federal ARRA IDEA Revenue Received as Pass Through	8,202.15					
6839 Federal Revenue Received from Other Sources	66,964.93					
6910 Rentals	360,409.14					
6920 Contributions and Donations from Private Sources	235,639.83					
6942 Summer School Tuition	79,925.52					
6944 Receipts from Other LEAs in Pennsylvania - Education	132,179.15					
6961 Transportation Services Provided Other Pennsylvania LEAs	35,073.00					
6991 Refunds of a Prior Year Expenditure	144,254.04					
6999 Other Revenues Not Specified Above	88,087.30					
6000 Total Revenue from Local Sources	\$83,241,799.10					
7000 Revenue from State Sources						
7111 Basic Education Funding-Formula	6,744,115.84					
7112 Basic Education Funding-Social Security	1,468,969.22					
7160 Tuition for Orphans Subsidy	84,652.98					
7250 Migratory Children	1,840.00					
7271 Special Education funds for School-Aged Pupils	2,724,807.08					
7311 Pupil Transportation Subsidy	961,728.30					
7312 Nonpublic and Charter School Pupil Transportation Subsidy	110,110.00					
7320 Rental and Sinking Fund Payments / Building Reimbursement Subsidy	953,991.50					
7330 Health Services (Medical, Dental, Nurse, Act 25)	116,118.77					
7340 State Property Tax Reduction Allocation	1,152,384.50					
7505 Ready to Learn Block Grant	474,037.00					
7820 State Share of Retirement Contributions	7,261,124.88					
7000 Total Revenue from State Sources	\$22,053,880.07					

LEA : 113364503 Manheim Township SD

Printed 11/21/2022 11:40:31 AM

	<u>Capital Reserve</u> <u>(1431) (32)</u>	<u>Other Capital</u> <u>Projects Fund (39)</u>	<u>Debt Service (40)</u>	<u>Permanent (90)</u>	<u>Total</u>
6000 Revenue from Local Sources					
6111 Current Real Estate Taxes					68,233,888.46
6112 Interim Real Estate Taxes					477,835.99
6113 Public Utility Realty Taxes					75,981.68
6114 Payments in Lieu of Current Taxes - State / Local					261,765.47
6143 Current Act 511 Local Services Taxes					280,983.47
6151 Current Act 511 Earned Income Taxes					9,122,325.10
6153 Current Act 511 Real Estate Transfer Taxes					1,923,892.23
6411 Delinquent Real Estate Taxes					452,790.62
6500 Earnings on Investments	5,347.14	25,733.19	0.06		138,635.52
6700 Revenues from LEA Activities					162,457.89
6832 Federal IDEA Revenue Received as Pass Through					991,588.00
6833 Federal ARRA IDEA Revenue Received as Pass Through					8,202.15
6839 Federal Revenue Received from Other Sources					66,964.93
6910 Rentals					360,409.14
6920 Contributions and Donations from Private Sources					235,639.83
6942 Summer School Tuition					79,925.52
6944 Receipts from Other LEAs in Pennsylvania - Education					132,179.15
6961 Transportation Services Provided Other Pennsylvania LEAs					35,073.00
6991 Refunds of a Prior Year Expenditure	202,425.35				346,679.39
6999 Other Revenues Not Specified Above					88,087.30
6000 Total Revenue from Local Sources	\$207,772.49	\$25,733.19	\$0.06		\$83,475,304.84
7000 Revenue from State Sources					
7111 Basic Education Funding-Formula					6,744,115.84
7112 Basic Education Funding-Social Security					1,468,969.22
7160 Tuition for Orphans Subsidy					84,652.98
7250 Migratory Children					1,840.00
7271 Special Education funds for School-Aged Pupils					2,724,807.08
7311 Pupil Transportation Subsidy					961,728.30
7312 Nonpublic and Charter School Pupil Transportation Subsidy					110,110.00
7320 Rental and Sinking Fund Payments / Building Reimbursement Subsidy					953,991.50
7330 Health Services (Medical, Dental, Nurse, Act 25)					116,118.77
7340 State Property Tax Reduction Allocation					1,152,384.50
7505 Ready to Learn Block Grant					474,037.00
7820 State Share of Retirement Contributions					7,261,124.88
7000 Total Revenue from State Sources					\$22,053,880.07

LEA : 113364503 Manheim Township SD

Printed 11/21/2022 11:40:31 AM

	<u>General Fund (10)</u>	<u>Student Sponsored Activity Fund (21)</u>	<u>Public Purpose Trust (27)</u>	<u>Other Compt Approved (28)</u>	<u>Athletic / Activity (29)</u>	<u>Capital Reserve (690.1850) (31)</u>
8000 Revenue from Federal Sources						
8514 NCLB, Title I - Improving the Academic Achievement of the Disadvantaged	641,811.94					
8515 NCLB, Title II - Preparing, Training and Recruiting High Quality Teachers and Principals	120,287.27					
8516 NCLB, Title III - Language Instruction for Limited English Proficient and Immigrant Students	61,736.42					
8517 NCLB, Title IV - 21st Century Schools	32,548.00					
8741 Elementary and Secondary School Emergency Relief Fund (ESSER)	908.00					
8742 Governor's Emergency Education Relief Fund (GEER)	10,840.99					
8743 ESSER II - Elementary and Secondary School Emergency Relief Fund	849,017.80					
8744 ARP ESSER - Elementary and Secondary School Emergency Relief Fund	1,666,772.57					
8751 ARP ESSER Learning Loss	67,691.84					
8752 ARP ESSER Summer Programs	14,925.76					
8753 ARP ESSER Afterschool Programs	5,934.36					
8754 ARP ESSER Homeless Children and Youth Funds	45,078.00					
8000 Total Revenue from Federal Sources	\$3,517,552.95					
9000 Other Financing Sources						
9110 Face Value of Bonds Issued						
9130 Bond Premiums						
9220 Leases		2,298,751.00				
9290 Other Extended-Term Financing Proceeds						
9310 General Fund Transfers						
9400 Sale of or Compensation for Loss of Fixed Assets		757,076.20				
9990 Insurance Recoveries		49,432.55				
9000 Total Other Financing Sources		\$3,105,259.75				
Total From All Sources		\$111,918,491.87				

	<u>Capital Reserve</u> <u>(1431) (32)</u>	<u>Other Capital</u> <u>Projects Fund (39)</u>	<u>Debt Service (40)</u>	<u>Permanent (90)</u>	<u>Total</u>
8000 Revenue from Federal Sources					
8514 NCLB, Title I - Improving the Academic Achievement of the Disadvantaged					641,811.94
8515 NCLB, Title II - Preparing, Training and Recruiting High Quality Teachers and Principals					120,287.27
8516 NCLB, Title III - Language Instruction for Limited English Proficient and Immigrant Students					61,736.42
8517 NCLB, Title IV - 21st Century Schools					32,548.00
8741 Elementary and Secondary School Emergency Relief Fund (ESSER)					908.00
8742 Governor's Emergency Education Relief Fund (GEER)					10,840.99
8743 ESSER II - Elementary and Secondary School Emergency Relief Fund					849,017.80
8744 ARP ESSER - Elementary and Secondary School Emergency Relief Fund					1,666,772.57
8751 ARP ESSER Learning Loss					67,691.84
8752 ARP ESSER Summer Programs					14,925.76
8753 ARP ESSER Afterschool Programs					5,934.36
8754 ARP ESSER Homeless Children and Youth Funds					45,078.00
8000 Total Revenue from Federal Sources					\$3,517,552.95
9000 Other Financing Sources					
9110 Face Value of Bonds Issued		16,920,000.00			16,920,000.00
9130 Bond Premiums		3,314,191.50			3,314,191.50
9220 Leases					2,298,751.00
9290 Other Extended-Term Financing Proceeds		3,923,546.25			3,923,546.25
9310 General Fund Transfers	3,991,378.00				3,991,378.00
9400 Sale of or Compensation for Loss of Fixed Assets					757,076.20
9990 Insurance Recoveries					49,432.55
9000 Total Other Financing Sources	\$3,991,378.00	\$24,157,737.75			\$31,254,375.50
Total From All Sources	\$4,199,150.49	\$24,183,470.94	\$0.06		\$140,301,113.36

	<u>General Fund (10)</u>	<u>Student Sponsored Activity Fund (21)</u>	<u>Public Purpose Trust (27)</u>	<u>Other Compt Approved (28)</u>	<u>Athletic / Activity (29)</u>	<u>Capital Reserve (690. 1850) (31)</u>
Revenue from Local Sources	83,241,799.10					
Revenue from State Sources	22,053,880.07					
Revenue from Federal Sources	3,517,552.95					
Other Financing Sources	3,105,259.75					
Total From All Sources	\$111,918,491.87					

	<u>Capital Reserve (1431)</u> <u>(32)</u>	<u>Other Capital Projects</u> <u>Fund (39)</u>	<u>Debt Service (40)</u>	<u>Permanent (90)</u>	<u>Total</u>
Revenue from Local Sources	207,772.49	25,733.19	0.06		83,475,304.84
Revenue from State Sources					22,053,880.07
Revenue from Federal Sources					3,517,552.95
Other Financing Sources	3,991,378.00	24,157,737.75			31,254,375.50
Total From All Sources	\$4,199,150.49	\$24,183,470.94	\$0.06		\$140,301,113.36

General Fund (10)

	<u>Total</u>
1000 Instruction	
100 Personnel Services – Salaries	
100 Personnel Services – Salaries	29,417,403.43
Total Personnel Services – Salaries	\$29,417,403.43
200 Personnel Services – Employee Benefits	
210 Group Insurance – Contracted Provider	88,480.56
220 Social Security Contributions	2,194,591.93
230 PSERS Retirement Contributions	10,266,701.22
250 Unemployment Compensation	10,352.17
260 Workers’ Compensation	174,312.16
270 Group Insurance – Self-Insurance	5,326,130.46
291 Other Retirement Plans	177,550.00
292 Health Savings Accounts	188,393.77
Total Personnel Services – Employee Benefits	\$18,426,512.27
300 Purchased Professional and Technical Services	
322 Professional Educational Services – Ius	2,553,446.70
323 Professional Educational Services – Other Educational Agencies	1,100.00
329 Professional Educational Services – Other	1,522,169.34
330 Other Professional Services	24,941.92
390 Other Purchased Professional and Technical Services	10,859.15
Total Purchased Professional and Technical Services	\$4,112,517.11
400 Purchased Property Services	
410 Cleaning Services	2,282.50
430 Repairs and Maintenance Services	53,690.23
Total Purchased Property Services	\$55,972.73
500 Other Purchased Services	
510 Student Transportation Services	46,583.14
530 Communications	23,587.47
550 Printing and Binding	19,341.28
561 Tuition To Other School Districts Within the State	253,312.06
562 Tuition To Pennsylvania Charter Schools	1,531,089.56
564 Tuition To Career and Technology Centers	991,466.60
567 Tuition To Approved Private Schools (APS) and PA Chartered Schools for the Deaf and Blind	124,107.85
568 Tuition To Private Residential Rehabilitative Institutions (PRRI) [In-State] and Detention Centers	86,354.84
569 Tuition – Other	245,715.38
580 Travel	3,080.09
Total Other Purchased Services	\$3,324,638.27
600 Supplies	
610 General Supplies	672,763.03
620 Energy	400.89
630 Food	959.25
640 Books and Periodicals	232,708.08
650 Supplies & Fees – Technology Related	657,667.92
Total Supplies	\$1,564,499.17

General Fund (10)

1000 Instruction	<u>Total</u>
700 <u>Property</u>	
752 Capital Equipment – Original and Additional	34,090.80
790 Other Property	264,165.00
Total Property	\$298,255.80
800 <u>Other Objects</u>	
810 Dues and Fees	26,976.43
Total Other Objects	\$26,976.43
Total 1000 Instruction	\$57,226,775.21

General Fund (10)

1100 Regular Programs – Elementary / Secondary

	<u>Elementary</u>	<u>Secondary</u>	<u>Federal</u>	<u>Total</u>
100 Personnel Services – Salaries				
100 Personnel Services – Salaries	12,442,753.86	11,275,351.00	987,733.86	24,705,838.72
Total Personnel Services – Salaries	\$12,442,753.86	\$11,275,351.00	\$987,733.86	\$24,705,838.72
200 Personnel Services – Employee Benefits				
210 Group Insurance – Contracted Provider	38,265.78	34,904.88	1,185.70	74,356.36
220 Social Security Contributions	927,785.08	840,176.77	74,448.56	1,842,410.41
230 PSERS Retirement Contributions	4,432,762.42	4,017,932.55	170,791.35	8,621,486.32
250 Unemployment Compensation	1,080.81	9,148.98		10,229.79
260 Workers' Compensation	75,312.57	69,340.26		144,652.83
270 Group Insurance – Self-Insurance	2,289,393.37	2,078,125.85	153,834.19	4,521,353.41
291 Other Retirement Plans	66,350.00	67,800.00		134,150.00
292 Health Savings Accounts	76,928.50	78,882.78	7,265.58	163,076.86
Total Personnel Services – Employee Benefits	\$7,907,878.53	\$7,196,312.07	\$407,525.38	\$15,511,715.98
300 Purchased Professional and Technical Services				
322 Professional Educational Services – Ius		25,630.35		25,630.35
329 Professional Educational Services – Other	461,124.10	395,203.61	15,052.04	871,379.75
330 Other Professional Services		14,930.00	10,011.92	24,941.92
390 Other Purchased Professional and Technical Services	400.00			400.00
Total Purchased Professional and Technical Services	\$461,524.10	\$435,763.96	\$25,063.96	\$922,352.02
400 Purchased Property Services				
410 Cleaning Services	2,282.50			2,282.50
430 Repairs and Maintenance Services	22,889.49	25,133.19		48,022.68
Total Purchased Property Services	\$25,171.99	\$25,133.19		\$50,305.18
500 Other Purchased Services				
510 Student Transportation Services	22,246.88	20,534.92	3,801.34	46,583.14
530 Communications	11,335.56	12,153.63		23,489.19
550 Printing and Binding	10,057.47	9,283.81		19,341.28
561 Tuition To Other School Districts Within the State	17,273.83	107,270.81		124,544.64
562 Tuition To Pennsylvania Charter Schools	440,950.00	518,085.21		959,035.21
568 Tuition To Private Residential Rehabilitative Institutions (PRRI) [In-State] and Detention Centers		17,949.45		17,949.45
580 Travel	540.97	1,781.42		2,322.39
Total Other Purchased Services	\$502,404.71	\$687,059.25	\$3,801.34	\$1,193,265.30
600 Supplies				
610 General Supplies	278,206.07	325,991.93	7,130.80	611,328.80
620 Energy		400.89		400.89
630 Food	300.82		658.43	959.25
640 Books and Periodicals	143,684.81	72,813.59	4,069.27	220,567.67
650 Supplies & Fees – Technology Related	142,826.08	377,857.01	91,681.25	612,364.34
Total Supplies	\$565,017.78	\$777,063.42	\$103,539.75	\$1,445,620.95
700 Property				
752 Capital Equipment – Original and Additional		34,090.80		34,090.80
790 Other Property	137,366.00	126,799.00		264,165.00
Total Property	\$137,366.00	\$160,889.80		\$298,255.80

LEA : 113364503 Manheim Township SD

Printed 11/21/2022 11:40:39 AM

General Fund (10)

	<u>Elementary</u>	<u>Secondary</u>	<u>Federal</u>	<u>Total</u>
1100 Regular Programs – Elementary / Secondary				
800 <u>Other Objects</u>				
810 Dues and Fees		22,305.73		22,305.73
Total Other Objects		\$22,305.73		\$22,305.73
Total 1100 Regular Programs – Elementary / Secondary	\$22,042,116.97	\$20,579,878.42	\$1,527,664.29	\$44,149,659.68

General Fund (10)

1110 Regular Programs

	<u>Elementary</u>	<u>Secondary</u>	<u>Federal</u>	<u>Total</u>
100 Personnel Services – Salaries				
100 Personnel Services – Salaries	12,442,753.86	11,275,351.00	442,214.55	24,160,319.41
Total Personnel Services – Salaries	\$12,442,753.86	\$11,275,351.00	\$442,214.55	\$24,160,319.41
200 Personnel Services – Employee Benefits				
210 Group Insurance – Contracted Provider	38,265.78	34,904.88	643.64	73,814.30
220 Social Security Contributions	927,785.08	840,176.77	33,142.41	1,801,104.26
230 PSERS Retirement Contributions	4,432,762.42	4,017,932.55	77,200.04	8,527,895.01
250 Unemployment Compensation	1,080.81	9,148.98		10,229.79
260 Workers' Compensation	75,312.57	69,340.26		144,652.83
270 Group Insurance – Self-Insurance	2,289,393.37	2,078,125.85	86,359.47	4,453,878.69
291 Other Retirement Plans	66,350.00	67,800.00		134,150.00
292 Health Savings Accounts	76,928.50	78,882.78	4,065.00	159,876.28
Total Personnel Services – Employee Benefits	\$7,907,878.53	\$7,196,312.07	\$201,410.56	\$15,305,601.16
300 Purchased Professional and Technical Services				
322 Professional Educational Services – Ius		25,630.35		25,630.35
329 Professional Educational Services – Other	461,124.10	395,203.61	804.00	857,131.71
330 Other Professional Services		14,930.00		14,930.00
390 Other Purchased Professional and Technical Services	400.00			400.00
Total Purchased Professional and Technical Services	\$461,524.10	\$435,763.96	\$804.00	\$898,092.06
400 Purchased Property Services				
410 Cleaning Services	2,282.50			2,282.50
430 Repairs and Maintenance Services	22,889.49	25,133.19		48,022.68
Total Purchased Property Services	\$25,171.99	\$25,133.19		\$50,305.18
500 Other Purchased Services				
510 Student Transportation Services	22,246.88	20,534.92		42,781.80
530 Communications	11,335.56	12,153.63		23,489.19
550 Printing and Binding	10,057.47	9,283.81		19,341.28
561 Tuition To Other School Districts Within the State	17,273.83	107,270.81		124,544.64
562 Tuition To Pennsylvania Charter Schools	440,950.00	518,085.21		959,035.21
568 Tuition To Private Residential Rehabilitative Institutions (PRRI) [In-State] and Detention Centers		17,949.45		17,949.45
580 Travel	540.97	1,781.42		2,322.39
Total Other Purchased Services	\$502,404.71	\$687,059.25		\$1,189,463.96
600 Supplies				
610 General Supplies	278,206.07	325,991.93	6,396.00	610,594.00
620 Energy		400.89		400.89
630 Food	300.82			300.82
640 Books and Periodicals	143,684.81	72,813.59		216,498.40
650 Supplies & Fees – Technology Related	142,826.08	377,857.01		520,683.09
Total Supplies	\$565,017.78	\$777,063.42	\$6,396.00	\$1,348,477.20
700 Property				
752 Capital Equipment – Original and Additional		34,090.80		34,090.80
790 Other Property	137,366.00	126,799.00		264,165.00
Total Property	\$137,366.00	\$160,889.80		\$298,255.80

General Fund (10)

1110 Regular Programs

Elementary

Secondary

Federal

Total

800 Other Objects

810 Dues and Fees

22,305.73

22,305.73

Total Other Objects

\$22,305.73

\$22,305.73

Total 1110 Regular Programs

\$22,042,116.97

\$20,579,878.42

\$650,825.11

\$43,272,820.50

General Fund (10)

1190 Federally-Funded Regular Programs

	<u>Elementary</u>	<u>Secondary</u>	<u>Federal</u>	<u>Total</u>
100 Personnel Services – Salaries				
100 Personnel Services – Salaries			545,519.31	545,519.31
Total Personnel Services – Salaries			\$545,519.31	\$545,519.31
200 Personnel Services – Employee Benefits				
210 Group Insurance – Contracted Provider			542.06	542.06
220 Social Security Contributions			41,306.15	41,306.15
230 PSERS Retirement Contributions			93,591.31	93,591.31
270 Group Insurance – Self-Insurance			67,474.72	67,474.72
292 Health Savings Accounts			3,200.58	3,200.58
Total Personnel Services – Employee Benefits			\$206,114.82	\$206,114.82
300 Purchased Professional and Technical Services				
329 Professional Educational Services – Other			14,248.04	14,248.04
330 Other Professional Services			10,011.92	10,011.92
Total Purchased Professional and Technical Services			\$24,259.96	\$24,259.96
500 Other Purchased Services				
510 Student Transportation Services			3,801.34	3,801.34
Total Other Purchased Services			\$3,801.34	\$3,801.34
600 Supplies				
610 General Supplies			734.80	734.80
630 Food			658.43	658.43
640 Books and Periodicals			4,069.27	4,069.27
650 Supplies & Fees – Technology Related			91,681.25	91,681.25
Total Supplies			\$97,143.75	\$97,143.75
Total 1190 Federally-Funded Regular Programs			\$876,839.18	\$876,839.18

General Fund (10)

1200 Special Programs – Elementary / Secondary

	<u>Elementary</u>	<u>Secondary</u>	<u>Federal</u>	<u>Total</u>
100 Personnel Services – Salaries				
100 Personnel Services – Salaries	2,681,892.69	1,967,898.27	718.75	4,650,509.71
Total Personnel Services – Salaries	\$2,681,892.69	\$1,967,898.27	\$718.75	\$4,650,509.71
200 Personnel Services – Employee Benefits				
210 Group Insurance – Contracted Provider	7,585.01	6,539.19		14,124.20
220 Social Security Contributions	200,970.77	146,565.57	53.93	347,590.27
230 PSERS Retirement Contributions	933,706.13	690,050.24	125.56	1,623,881.93
250 Unemployment Compensation	48.68	73.70		122.38
260 Workers' Compensation	17,360.30	12,299.03		29,659.33
270 Group Insurance – Self-Insurance	398,048.87	406,728.18		804,777.05
291 Other Retirement Plans	31,600.00	11,800.00		43,400.00
292 Health Savings Accounts	12,795.00	12,521.91		25,316.91
Total Personnel Services – Employee Benefits	\$1,602,114.76	\$1,286,577.82	\$179.49	\$2,888,872.07
300 Purchased Professional and Technical Services				
322 Professional Educational Services – Ius	558,579.26	1,285,644.20	670,245.00	2,514,468.46
323 Professional Educational Services – Other Educational Agencies	1,100.00			1,100.00
329 Professional Educational Services – Other	208,122.56	101,495.75	319,545.15	629,163.46
390 Other Purchased Professional and Technical Services	6,547.09	3,912.06		10,459.15
Total Purchased Professional and Technical Services	\$774,348.91	\$1,391,052.01	\$989,790.15	\$3,155,191.07
400 Purchased Property Services				
430 Repairs and Maintenance Services	2,915.48	2,752.07		5,667.55
Total Purchased Property Services	\$2,915.48	\$2,752.07		\$5,667.55
500 Other Purchased Services				
530 Communications		98.28		98.28
561 Tuition To Other School Districts Within the State	8,738.41	108,720.30		117,458.71
562 Tuition To Pennsylvania Charter Schools	201,154.03	370,900.32		572,054.35
567 Tuition To Approved Private Schools (APS) and PA Chartered Schools for the Deaf and Blind		124,107.85		124,107.85
568 Tuition To Private Residential Rehabilitative Institutions (PRRI) [In-State] and Detention Centers		59,529.07		59,529.07
569 Tuition – Other		188,531.78		188,531.78
580 Travel	757.70			757.70
Total Other Purchased Services	\$210,650.14	\$851,887.60		\$1,062,537.74
600 Supplies				
610 General Supplies	34,408.94	11,101.74		45,510.68
640 Books and Periodicals	8,485.06	3,655.35		12,140.41
650 Supplies & Fees – Technology Related	1,563.84	2,515.11	9,552.58	13,631.53
Total Supplies	\$44,457.84	\$17,272.20	\$9,552.58	\$71,282.62
800 Other Objects				
810 Dues and Fees	2,428.76	2,241.94		4,670.70
Total Other Objects	\$2,428.76	\$2,241.94		\$4,670.70
Total 1200 Special Programs – Elementary / Secondary	\$5,318,808.58	\$5,519,681.91	\$1,000,240.97	\$11,838,731.46

General Fund (10)

1210 Life Skills Support

	<u>Elementary</u>	<u>Secondary</u>	<u>Federal</u>	<u>Total</u>
100 Personnel Services – Salaries				
100 Personnel Services – Salaries	107,213.85	150,710.40		257,924.25
Total Personnel Services – Salaries	\$107,213.85	\$150,710.40		\$257,924.25
200 Personnel Services – Employee Benefits				
210 Group Insurance – Contracted Provider	267.35	416.54		683.89
220 Social Security Contributions	8,063.51	11,373.15		19,436.66
230 PSERS Retirement Contributions	37,460.85	54,256.27		91,717.12
260 Workers' Compensation	759.19	708.59		1,467.78
270 Group Insurance – Self-Insurance	9,981.64	15,847.89		25,829.53
292 Health Savings Accounts	500.04	375.00		875.04
Total Personnel Services – Employee Benefits	\$57,032.58	\$82,977.44		\$140,010.02
300 Purchased Professional and Technical Services				
329 Professional Educational Services – Other		2,844.80		2,844.80
Total Purchased Professional and Technical Services		\$2,844.80		\$2,844.80
600 Supplies				
610 General Supplies	1,541.86	1,330.16		2,872.02
640 Books and Periodicals	1,462.72	76.93		1,539.65
650 Supplies & Fees – Technology Related	781.92	582.24		1,364.16
Total Supplies	\$3,786.50	\$1,989.33		\$5,775.83
Total 1210 Life Skills Support	\$168,032.93	\$238,521.97		\$406,554.90

General Fund (10)

1220 Sensory Support

	<u>Elementary</u>	<u>Secondary</u>	<u>Federal</u>	<u>Total</u>
100 Personnel Services – Salaries				
100 Personnel Services – Salaries	375,184.07	64,534.00		439,718.07
Total Personnel Services – Salaries	\$375,184.07	\$64,534.00		\$439,718.07
200 Personnel Services – Employee Benefits				
210 Group Insurance – Contracted Provider	1,268.23	238.93		1,507.16
220 Social Security Contributions	27,664.76	4,625.16		32,289.92
230 PSERS Retirement Contributions	131,089.20	22,548.17		153,637.37
260 Workers' Compensation	2,378.81	354.29		2,733.10
270 Group Insurance – Self-Insurance	77,655.71	22,692.00		100,347.71
292 Health Savings Accounts	3,124.98	750.00		3,874.98
Total Personnel Services – Employee Benefits	\$243,181.69	\$51,208.55		\$294,390.24
300 Purchased Professional and Technical Services				
322 Professional Educational Services – Ius	95,987.41	109,635.95		205,623.36
390 Other Purchased Professional and Technical Services	5,442.09	2,217.06		7,659.15
Total Purchased Professional and Technical Services	\$101,429.50	\$111,853.01		\$213,282.51
500 Other Purchased Services				
580 Travel	246.04			246.04
Total Other Purchased Services	\$246.04			\$246.04
600 Supplies				
610 General Supplies	2,895.90	35.01		2,930.91
640 Books and Periodicals	286.26	420.50		706.76
Total Supplies	\$3,182.16	\$455.51		\$3,637.67
Total 1220 Sensory Support	\$723,223.46	\$228,051.07		\$951,274.53

General Fund (10)

1230 Emotional Support

	<u>Elementary</u>	<u>Secondary</u>	<u>Federal</u>	<u>Total</u>
100 Personnel Services – Salaries				
100 Personnel Services – Salaries	629,021.36	221,511.52		850,532.88
Total Personnel Services – Salaries	\$629,021.36	\$221,511.52		\$850,532.88
200 Personnel Services – Employee Benefits				
210 Group Insurance – Contracted Provider	1,819.30	758.39		2,577.69
220 Social Security Contributions	47,276.45	16,684.08		63,960.53
230 PSERS Retirement Contributions	218,592.49	77,369.42		295,961.91
250 Unemployment Compensation	48.68	73.70		122.38
260 Workers' Compensation	3,846.60	1,569.01		5,415.61
270 Group Insurance – Self-Insurance	95,917.75	45,243.58		141,161.33
292 Health Savings Accounts	2,099.98	1,875.00		3,974.98
Total Personnel Services – Employee Benefits	\$369,601.25	\$143,573.18		\$513,174.43
300 Purchased Professional and Technical Services				
322 Professional Educational Services – Ius	462,591.85	691,855.25		1,154,447.10
323 Professional Educational Services – Other Educational Agencies	1,100.00			1,100.00
329 Professional Educational Services – Other	34,397.68	6,866.70		41,264.38
Total Purchased Professional and Technical Services	\$498,089.53	\$698,721.95		\$1,196,811.48
500 Other Purchased Services				
561 Tuition To Other School Districts Within the State		74,152.00		74,152.00
569 Tuition – Other		188,531.78		188,531.78
Total Other Purchased Services		\$262,683.78		\$262,683.78
600 Supplies				
610 General Supplies	5,737.76	1,293.72		7,031.48
640 Books and Periodicals	2,713.80	1,207.98		3,921.78
Total Supplies	\$8,451.56	\$2,501.70		\$10,953.26
Total 1230 Emotional Support	\$1,505,163.70	\$1,328,992.13		\$2,834,155.83

General Fund (10)

1240 Academic Support

	<u>Elementary</u>	<u>Secondary</u>	<u>Federal</u>	<u>Total</u>
100 Personnel Services – Salaries				
100 Personnel Services – Salaries	1,482,804.49	1,403,100.55		2,885,905.04
Total Personnel Services – Salaries	\$1,482,804.49	\$1,403,100.55		\$2,885,905.04
200 Personnel Services – Employee Benefits				
210 Group Insurance – Contracted Provider	3,893.06	4,743.71		8,636.77
220 Social Security Contributions	111,276.74	104,616.64		215,893.38
230 PSERS Retirement Contributions	515,932.13	491,182.28		1,007,114.41
260 Workers' Compensation	9,211.60	8,958.56		18,170.16
270 Group Insurance – Self-Insurance	212,120.01	301,307.59		513,427.60
291 Other Retirement Plans	31,600.00	11,800.00		43,400.00
292 Health Savings Accounts	7,070.00	8,471.91		15,541.91
Total Personnel Services – Employee Benefits	\$891,103.54	\$931,080.69		\$1,822,184.23
300 Purchased Professional and Technical Services				
322 Professional Educational Services – Ius		139,033.10		139,033.10
329 Professional Educational Services – Other	173,724.88	91,784.25		265,509.13
390 Other Purchased Professional and Technical Services	1,105.00	1,695.00		2,800.00
Total Purchased Professional and Technical Services	\$174,829.88	\$232,512.35		\$407,342.23
400 Purchased Property Services				
430 Repairs and Maintenance Services	2,915.48	2,752.07		5,667.55
Total Purchased Property Services	\$2,915.48	\$2,752.07		\$5,667.55
500 Other Purchased Services				
530 Communications		98.28		98.28
561 Tuition To Other School Districts Within the State	8,738.41	31,006.55		39,744.96
562 Tuition To Pennsylvania Charter Schools	201,154.03	370,900.32		572,054.35
568 Tuition To Private Residential Rehabilitative Institutions (PRRI) [In-State] and Detention Centers		59,529.07		59,529.07
580 Travel	511.66			511.66
Total Other Purchased Services	\$210,404.10	\$461,534.22		\$671,938.32
600 Supplies				
610 General Supplies	3,510.33	3,556.17		7,066.50
640 Books and Periodicals	4,022.28	456.78		4,479.06
650 Supplies & Fees – Technology Related		1,932.87		1,932.87
Total Supplies	\$7,532.61	\$5,945.82		\$13,478.43
Total 1240 Academic Support	\$2,769,590.10	\$3,036,925.70		\$5,806,515.80

General Fund (10)

	<u>Elementary</u>	<u>Secondary</u>	<u>Federal</u>	<u>Total</u>
1241 Learning Support – Public				
100 Personnel Services – Salaries				
100 Personnel Services – Salaries	1,230,007.60	1,132,677.91		2,362,685.51
Total Personnel Services – Salaries	\$1,230,007.60	\$1,132,677.91		\$2,362,685.51
200 Personnel Services – Employee Benefits				
210 Group Insurance – Contracted Provider	3,126.39	3,906.52		7,032.91
220 Social Security Contributions	92,469.54	84,516.53		176,986.07
230 PSERS Retirement Contributions	427,866.89	396,718.52		824,585.41
260 Workers' Compensation	7,693.20	7,085.88		14,779.08
270 Group Insurance – Self-Insurance	157,647.10	257,240.16		414,887.26
291 Other Retirement Plans		11,800.00		11,800.00
292 Health Savings Accounts	4,695.00	7,372.50		12,067.50
Total Personnel Services – Employee Benefits	\$693,498.12	\$768,640.11		\$1,462,138.23
300 Purchased Professional and Technical Services				
322 Professional Educational Services – Ius		139,033.10		139,033.10
329 Professional Educational Services – Other	173,644.48	83,700.25		257,344.73
Total Purchased Professional and Technical Services	\$173,644.48	\$222,733.35		\$396,377.83
400 Purchased Property Services				
430 Repairs and Maintenance Services	2,915.48	2,752.07		5,667.55
Total Purchased Property Services	\$2,915.48	\$2,752.07		\$5,667.55
500 Other Purchased Services				
530 Communications		98.28		98.28
561 Tuition To Other School Districts Within the State	8,738.41	31,006.55		39,744.96
562 Tuition To Pennsylvania Charter Schools	201,154.03	370,900.32		572,054.35
568 Tuition To Private Residential Rehabilitative Institutions (PRRI) [In-State] and Detention Centers		59,529.07		59,529.07
580 Travel	278.91			278.91
Total Other Purchased Services	\$210,171.35	\$461,534.22		\$671,705.57
600 Supplies				
610 General Supplies	3,054.55	3,188.17		6,242.72
640 Books and Periodicals	4,022.28	456.78		4,479.06
650 Supplies & Fees – Technology Related		1,932.87		1,932.87
Total Supplies	\$7,076.83	\$5,577.82		\$12,654.65
Total 1241 Learning Support – Public	\$2,317,313.86	\$2,593,915.48		\$4,911,229.34

General Fund (10)

	<u>Elementary</u>	<u>Secondary</u>	<u>Federal</u>	<u>Total</u>
1243 Gifted Support				
100 Personnel Services – Salaries				
100 Personnel Services – Salaries	252,796.89	270,422.64		523,219.53
Total Personnel Services – Salaries	\$252,796.89	\$270,422.64		\$523,219.53
200 Personnel Services – Employee Benefits				
210 Group Insurance – Contracted Provider	766.67	837.19		1,603.86
220 Social Security Contributions	18,807.20	20,100.11		38,907.31
230 PSERS Retirement Contributions	88,065.24	94,463.76		182,529.00
260 Workers' Compensation	1,518.40	1,872.68		3,391.08
270 Group Insurance – Self-Insurance	54,472.91	44,067.43		98,540.34
291 Other Retirement Plans	31,600.00			31,600.00
292 Health Savings Accounts	2,375.00	1,099.41		3,474.41
Total Personnel Services – Employee Benefits	\$197,605.42	\$162,440.58		\$360,046.00
300 Purchased Professional and Technical Services				
329 Professional Educational Services – Other	80.40	8,084.00		8,164.40
390 Other Purchased Professional and Technical Services	1,105.00	1,695.00		2,800.00
Total Purchased Professional and Technical Services	\$1,185.40	\$9,779.00		\$10,964.40
500 Other Purchased Services				
580 Travel	232.75			232.75
Total Other Purchased Services	\$232.75			\$232.75
600 Supplies				
610 General Supplies	455.78	368.00		823.78
Total Supplies	\$455.78	\$368.00		\$823.78
Total 1243 Gifted Support	\$452,276.24	\$443,010.22		\$895,286.46

General Fund (10)

1270 Multi-Handicapped Support

	<u>Elementary</u>	<u>Secondary</u>	<u>Federal</u>	<u>Total</u>
100 Personnel Services – Salaries				
100 Personnel Services – Salaries	87,637.72	128,013.00		215,650.72
Total Personnel Services – Salaries	\$87,637.72	\$128,013.00		\$215,650.72
200 Personnel Services – Employee Benefits				
210 Group Insurance – Contracted Provider	337.07	381.62		718.69
220 Social Security Contributions	6,686.92	9,264.34		15,951.26
230 PSERS Retirement Contributions	30,620.56	44,684.04		75,304.60
260 Workers' Compensation	1,164.10	708.58		1,872.68
270 Group Insurance – Self-Insurance	2,373.76	21,637.12		24,010.88
292 Health Savings Accounts		1,050.00		1,050.00
Total Personnel Services – Employee Benefits	\$41,182.41	\$77,725.70		\$118,908.11
300 Purchased Professional and Technical Services				
322 Professional Educational Services – Ius		43,019.00		43,019.00
Total Purchased Professional and Technical Services		\$43,019.00		\$43,019.00
600 Supplies				
610 General Supplies	20,723.09	4,886.68		25,609.77
640 Books and Periodicals		1,493.16		1,493.16
650 Supplies & Fees – Technology Related	781.92			781.92
Total Supplies	\$21,505.01	\$6,379.84		\$27,884.85
Total 1270 Multi-Handicapped Support	\$150,325.14	\$255,137.54		\$405,462.68

General Fund (10)

1290 Special Programs - Other Support

100 Personnel Services – Salaries

	<u>Elementary</u>	<u>Secondary</u>	<u>Federal</u>	<u>Total</u>
100 Personnel Services – Salaries	31.20	28.80	718.75	778.75
Total Personnel Services – Salaries	\$31.20	\$28.80	\$718.75	\$778.75

200 Personnel Services – Employee Benefits

220 Social Security Contributions	2.39	2.20	53.93	58.52
230 PSERS Retirement Contributions	10.90	10.06	125.56	146.52
Total Personnel Services – Employee Benefits	\$13.29	\$12.26	\$179.49	\$205.04

300 Purchased Professional and Technical Services

322 Professional Educational Services – Ius		302,100.90	670,245.00	972,345.90
329 Professional Educational Services – Other			319,545.15	319,545.15
Total Purchased Professional and Technical Services		\$302,100.90	\$989,790.15	\$1,291,891.05

500 Other Purchased Services

561 Tuition To Other School Districts Within the State		3,561.75		3,561.75
567 Tuition To Approved Private Schools (APS) and PA Chartered Schools for the Deaf and Blind		124,107.85		124,107.85
Total Other Purchased Services		\$127,669.60		\$127,669.60

600 Supplies

650 Supplies & Fees – Technology Related			9,552.58	9,552.58
Total Supplies			\$9,552.58	\$9,552.58

800 Other Objects

810 Dues and Fees	2,428.76	2,241.94		4,670.70
Total Other Objects	\$2,428.76	\$2,241.94		\$4,670.70

Total 1290 Special Programs - Other Support

	\$2,473.25	\$432,053.50	\$1,000,240.97	\$1,434,767.72
--	-------------------	---------------------	-----------------------	-----------------------

General Fund (10)

1300 Vocational Education

500 Other Purchased Services

564 Tuition To Career and Technology Centers

Total Other Purchased Services

Total 1300 Vocational Education

Elementary

Secondary

Federal

Total

991,466.60

991,466.60

\$991,466.60

\$991,466.60

\$991,466.60

\$991,466.60

General Fund (10)

	<u>Elementary</u>	<u>Secondary</u>	<u>Federal</u>	<u>Total</u>
1400 Other Instructional Programs – Elementary / Secondary				
100 Personnel Services – Salaries				
100 Personnel Services – Salaries	900.00	47,747.50	12,407.50	61,055.00
Total Personnel Services – Salaries	\$900.00	\$47,747.50	\$12,407.50	\$61,055.00
200 Personnel Services – Employee Benefits				
220 Social Security Contributions	66.71	3,589.34	935.20	4,591.25
230 PSERS Retirement Contributions	2,198.16	16,967.21	2,167.60	21,332.97
Total Personnel Services – Employee Benefits	\$2,264.87	\$20,556.55	\$3,102.80	\$25,924.22
300 Purchased Professional and Technical Services				
329 Professional Educational Services – Other	5,949.75	15,676.38		21,626.13
Total Purchased Professional and Technical Services	\$5,949.75	\$15,676.38		\$21,626.13
500 Other Purchased Services				
561 Tuition To Other School Districts Within the State		11,308.71		11,308.71
568 Tuition To Private Residential Rehabilitative Institutions (PRRI) [In-State] and Detention Centers		8,876.32		8,876.32
569 Tuition – Other		57,183.60		57,183.60
Total Other Purchased Services		\$77,368.63		\$77,368.63
600 Supplies				
610 General Supplies			1,445.55	1,445.55
650 Supplies & Fees – Technology Related			28,825.05	28,825.05
Total Supplies			\$30,270.60	\$30,270.60
Total 1400 Other Instructional Programs – Elementary / Secondary	\$9,114.62	\$161,349.06	\$45,780.90	\$216,244.58

General Fund (10)

	<u>Elementary</u>	<u>Secondary</u>	<u>Federal</u>	<u>Total</u>
1420 Summer School				
100 Personnel Services – Salaries				
100 Personnel Services – Salaries		44,885.00	10,780.00	55,665.00
Total Personnel Services – Salaries		\$44,885.00	\$10,780.00	\$55,665.00
200 Personnel Services – Employee Benefits				
220 Social Security Contributions		3,374.75	816.94	4,191.69
230 PSERS Retirement Contributions	1,883.70	15,682.80	1,883.27	19,449.77
Total Personnel Services – Employee Benefits	\$1,883.70	\$19,057.55	\$2,700.21	\$23,641.46
600 Supplies				
610 General Supplies			1,445.55	1,445.55
650 Supplies & Fees – Technology Related			28,825.05	28,825.05
Total Supplies			\$30,270.60	\$30,270.60
Total 1420 Summer School	\$1,883.70	\$63,942.55	\$43,750.81	\$109,577.06

General Fund (10)

	<u>Elementary</u>	<u>Secondary</u>	<u>Federal</u>	<u>Total</u>
1430 Homebound Instruction				
100 Personnel Services – Salaries				
100 Personnel Services – Salaries	900.00	2,097.50		2,997.50
Total Personnel Services – Salaries	\$900.00	\$2,097.50		\$2,997.50
200 Personnel Services – Employee Benefits				
220 Social Security Contributions	66.71	157.49		224.20
230 PSERS Retirement Contributions	314.46	732.79		1,047.25
Total Personnel Services – Employee Benefits	\$381.17	\$890.28		\$1,271.45
300 Purchased Professional and Technical Services				
329 Professional Educational Services – Other	5,949.75	15,676.38		21,626.13
Total Purchased Professional and Technical Services	\$5,949.75	\$15,676.38		\$21,626.13
Total 1430 Homebound Instruction	\$7,230.92	\$18,664.16		\$25,895.08

General Fund (10)

1440 Alternative Regular Education Programs

Elementary

Secondary

Federal

Total

500 Other Purchased Services

561 Tuition To Other School Districts Within the State

11,308.71

11,308.71

568 Tuition To Private Residential Rehabilitative Institutions (PRRI) [In-State] and Detention Centers

8,876.32

8,876.32

569 Tuition – Other

57,183.60

57,183.60

Total Other Purchased Services

\$77,368.63

\$77,368.63

Total 1440 Alternative Regular Education Programs

\$77,368.63

\$77,368.63

General Fund (10)

1441 Adjudicated / Court-Placed Programs

Elementary

Secondary

Federal

Total

500 Other Purchased Services

561 Tuition To Other School Districts Within the State

11,308.71

11,308.71

Total Other Purchased Services

\$11,308.71

\$11,308.71

Total 1441 Adjudicated / Court-Placed Programs

\$11,308.71

\$11,308.71

General Fund (10)

1442 Alternative Education Programs

Elementary

Secondary

Federal

Total

500 Other Purchased Services

568 Tuition To Private Residential Rehabilitative Institutions (PRRI) [In-State] and Detention Centers

8,876.32

8,876.32

569 Tuition – Other

57,183.60

57,183.60

Total Other Purchased Services

\$66,059.92

\$66,059.92

Total 1442 Alternative Education Programs

\$66,059.92

\$66,059.92

General Fund (10)

	<u>Elementary</u>	<u>Secondary</u>	<u>Federal</u>	<u>Total</u>
1450 Instructional Programs Outside the Established School Day				
100 Personnel Services – Salaries				
100 Personnel Services – Salaries		765.00	1,627.50	2,392.50
Total Personnel Services – Salaries		\$765.00	\$1,627.50	\$2,392.50
200 Personnel Services – Employee Benefits				
220 Social Security Contributions		57.10	118.26	175.36
230 PSERS Retirement Contributions		551.62	284.33	835.95
Total Personnel Services – Employee Benefits		\$608.72	\$402.59	\$1,011.31
Total 1450 Instructional Programs Outside the Established School Day		\$1,373.72	\$2,030.09	\$3,403.81

General Fund (10)

1500 Nonpublic School Programs

300 Purchased Professional and Technical Services

322 Professional Educational Services – lus

Elementary

Secondary

Federal

Total

13,347.89

13,347.89

Total Purchased Professional and Technical Services

\$13,347.89

\$13,347.89

600 Supplies

610 General Supplies

650 Supplies & Fees – Technology Related

14,478.00

14,478.00

2,847.00

2,847.00

Total Supplies

\$17,325.00

\$17,325.00

Total 1500 Nonpublic School Programs

\$30,672.89

\$30,672.89

General Fund (10)

2000 Support Services

Total

100 Personnel Services – Salaries

100 Personnel Services – Salaries 11,521,050.25

Total Personnel Services – Salaries \$11,521,050.25

200 Personnel Services – Employee Benefits

210 Group Insurance – Contracted Provider 35,345.31

220 Social Security Contributions 857,635.80

230 PSERS Retirement Contributions 4,012,662.36

240 Tuition Reimbursement 336,105.70

250 Unemployment Compensation 2,434.13

260 Workers' Compensation 61,900.04

270 Group Insurance – Self-Insurance 2,356,440.95

291 Other Retirement Plans 57,510.40

292 Health Savings Accounts 68,208.75

299 All Other Employee Benefits 28,977.42

Total Personnel Services – Employee Benefits \$7,817,220.86

300 Purchased Professional and Technical Services

310 Official / Administrative Services 128,420.82

322 Professional Educational Services – Ius 40,970.42

329 Professional Educational Services – Other 6,906.44

330 Other Professional Services 627,416.95

340 Technical Services 59,340.23

350 Security / Safety Services 200,494.80

360 Employee Training and Development Services 31,202.58

390 Other Purchased Professional and Technical Services 95,857.02

Total Purchased Professional and Technical Services \$1,190,609.26

400 Purchased Property Services

410 Cleaning Services 565,218.46

420 Utility Services 105,753.28

430 Repairs and Maintenance Services 868,450.79

440 Rentals 11,744.94

450 Construction Services 1,298.42

460 Extermination Services 4,936.54

490 Other Purchased Property Services 100.00

Total Purchased Property Services \$1,557,502.43

500 Other Purchased Services

513 Contracted Carriers 3,709,976.10

516 Student Transportation Services From the IU 181,464.77

520 Insurance – General 516.00

523 General Property and Liability Insurance 441,315.34

530 Communications 186,081.30

549 Other Advertising/Public Relations 13,649.44

550 Printing and Binding 11,938.31

580 Travel 13,467.68

595 IU Payments By Withholding 53,951.68

General Fund (10)

2000 Support Services

Total

Total Other Purchased Services \$4,612,360.62

600 Supplies

610 General Supplies	789,233.65
620 Energy	1,554,041.00
630 Food	21,453.05
640 Books and Periodicals	53,565.53
650 Supplies & Fees – Technology Related	581,963.45

Total Supplies \$3,000,256.68

700 Property

752 Capital Equipment – Original and Additional	86,188.31
790 Other Property	2,034,586.00

Total Property \$2,120,774.31

800 Other Objects

810 Dues and Fees	63,471.31
820 Claims and Judgments Against the LEA	47,563.00
890 Miscellaneous Expenditures	400.00

Total Other Objects \$111,434.31

Total 2000 Support Services \$31,931,208.72

General Fund (10)

	<u>Elementary</u>	<u>Secondary</u>	<u>Federal</u>	<u>Total</u>
2100 Support Services – Students				
100 Personnel Services – Salaries				
100 Personnel Services – Salaries	722,916.86	882,904.44	604,220.68	2,317,111.01
Total Personnel Services – Salaries	\$722,916.86	\$882,904.44	\$604,220.68	\$2,317,111.01
200 Personnel Services – Employee Benefits				
210 Group Insurance – Contracted Provider	2,416.00	2,886.90	966.79	6,620.08
220 Social Security Contributions	54,121.49	65,001.74	45,019.03	172,199.16
230 PSERS Retirement Contributions	301,474.45	342,169.72	105,035.32	808,484.26
260 Workers' Compensation	5,701.08	5,838.75		12,349.64
270 Group Insurance – Self-Insurance	134,699.93	157,723.18	105,123.86	415,210.98
292 Health Savings Accounts	3,234.18	5,975.80	4,125.00	14,084.98
299 All Other Employee Benefits	245.00	245.00		490.00
Total Personnel Services – Employee Benefits	\$501,892.13	\$579,841.09	\$260,270.00	\$1,429,439.10
300 Purchased Professional and Technical Services				
322 Professional Educational Services – Ius	1,873.96			1,873.96
329 Professional Educational Services – Other	409.36	377.88		787.24
330 Other Professional Services	11,194.52	4,250.00	4,212.50	19,657.02
390 Other Purchased Professional and Technical Services	6,400.25	6,063.44		12,463.69
Total Purchased Professional and Technical Services	\$19,878.09	\$10,691.32	\$4,212.50	\$34,781.91
500 Other Purchased Services				
530 Communications	2,421.70	3,068.53		5,490.23
550 Printing and Binding	1,300.00	1,200.00		2,500.00
580 Travel	150.68	96.87		852.78
Total Other Purchased Services	\$3,872.38	\$4,365.40		\$8,843.01
600 Supplies				
610 General Supplies	10,060.17	8,641.61		18,735.33
630 Food	139.48	4,337.01		4,623.49
640 Books and Periodicals	437.61	841.85		1,301.96
650 Supplies & Fees – Technology Related	7,307.96	23,747.94		92,553.90
Total Supplies	\$17,945.22	\$37,568.41		\$117,214.68
800 Other Objects				
810 Dues and Fees	92.56	710.44		1,383.84
Total Other Objects	\$92.56	\$710.44		\$1,383.84
Total 2100 Support Services – Students	\$1,266,597.24	\$1,516,081.10	\$868,703.18	\$3,908,773.55

General Fund (10)

2110 Supervision of Student Services

	<u>Elementary</u>	<u>Secondary</u>	<u>Federal</u>	<u>Total</u>
100 Personnel Services – Salaries				
100 Personnel Services – Salaries	50,285.96	49,913.39		100,199.35
Total Personnel Services – Salaries	\$50,285.96	\$49,913.39		\$100,199.35
200 Personnel Services – Employee Benefits				
210 Group Insurance – Contracted Provider	119.66	117.56		237.22
220 Social Security Contributions	3,862.28	3,834.60		7,696.88
230 PSERS Retirement Contributions	17,570.16	17,439.94		35,010.10
260 Workers' Compensation	279.39	277.36		556.75
270 Group Insurance – Self-Insurance	4,543.42	4,423.58		8,967.00
292 Health Savings Accounts	78.00	72.00		150.00
299 All Other Employee Benefits	245.00	245.00		490.00
Total Personnel Services – Employee Benefits	\$26,697.91	\$26,410.04		\$53,107.95
500 Other Purchased Services				
530 Communications	101.17	93.38		194.55
550 Printing and Binding	1,300.00	1,200.00		2,500.00
580 Travel	104.94	96.87		201.81
Total Other Purchased Services	\$1,506.11	\$1,390.25		\$2,896.36
600 Supplies				
610 General Supplies	509.43	470.25		979.68
630 Food	139.48	128.76		268.24
640 Books and Periodicals	425.62	392.88		818.50
Total Supplies	\$1,074.53	\$991.89		\$2,066.42
800 Other Objects				
810 Dues and Fees	92.56	85.44		178.00
Total Other Objects	\$92.56	\$85.44		\$178.00
Total 2110 Supervision of Student Services	\$79,657.07	\$78,791.01		\$158,448.08

General Fund (10)

2111 Supervision of Student Services – Head of Component

	<u>Elementary</u>	<u>Secondary</u>	<u>Federal</u>	<u>Total</u>
100 Personnel Services – Salaries				
100 Personnel Services – Salaries	50,285.96	49,913.39		100,199.35
Total Personnel Services – Salaries	\$50,285.96	\$49,913.39		\$100,199.35
200 Personnel Services – Employee Benefits				
210 Group Insurance – Contracted Provider	119.66	117.56		237.22
220 Social Security Contributions	3,862.28	3,834.60		7,696.88
230 PSERS Retirement Contributions	17,570.16	17,439.94		35,010.10
260 Workers' Compensation	279.39	277.36		556.75
270 Group Insurance – Self-Insurance	4,543.42	4,423.58		8,967.00
292 Health Savings Accounts	78.00	72.00		150.00
299 All Other Employee Benefits	245.00	245.00		490.00
Total Personnel Services – Employee Benefits	\$26,697.91	\$26,410.04		\$53,107.95
500 Other Purchased Services				
530 Communications	101.17	93.38		194.55
550 Printing and Binding	1,300.00	1,200.00		2,500.00
580 Travel	104.94	96.87		201.81
Total Other Purchased Services	\$1,506.11	\$1,390.25		\$2,896.36
600 Supplies				
610 General Supplies	509.43	470.25		979.68
630 Food	139.48	128.76		268.24
640 Books and Periodicals	425.62	392.88		818.50
Total Supplies	\$1,074.53	\$991.89		\$2,066.42
800 Other Objects				
810 Dues and Fees	92.56	85.44		178.00
Total Other Objects	\$92.56	\$85.44		\$178.00
Total 2111 Supervision of Student Services – Head of Component	\$79,657.07	\$78,791.01		\$158,448.08

General Fund (10)

2120 Guidance Services

	<u>Elementary</u>	<u>Secondary</u>	<u>Federal</u>	<u>Total</u>
100 Personnel Services – Salaries				
100 Personnel Services – Salaries	644,673.89	819,675.92		1,464,349.81
Total Personnel Services – Salaries	\$644,673.89	\$819,675.92		\$1,464,349.81
200 Personnel Services – Employee Benefits				
210 Group Insurance – Contracted Provider	1,839.72	2,383.14		4,222.86
220 Social Security Contributions	48,196.38	60,209.17		108,405.55
230 PSERS Retirement Contributions	225,117.79	286,135.62		511,253.41
260 Workers' Compensation	3,751.44	4,447.90		8,199.34
270 Group Insurance – Self-Insurance	113,845.60	141,101.60		254,947.20
292 Health Savings Accounts	3,124.98	5,875.00		8,999.98
Total Personnel Services – Employee Benefits	\$395,875.91	\$500,152.43		\$896,028.34
300 Purchased Professional and Technical Services				
330 Other Professional Services		250.00		250.00
Total Purchased Professional and Technical Services		\$250.00		\$250.00
500 Other Purchased Services				
530 Communications		833.12		833.12
Total Other Purchased Services		\$833.12		\$833.12
600 Supplies				
610 General Supplies	698.45			698.45
630 Food		4,208.25		4,208.25
640 Books and Periodicals	11.99	448.97		460.96
650 Supplies & Fees – Technology Related	4,005.75	20,699.75		24,705.50
Total Supplies	\$4,716.19	\$25,356.97		\$30,073.16
800 Other Objects				
810 Dues and Fees		625.00		625.00
Total Other Objects		\$625.00		\$625.00
Total 2120 Guidance Services	\$1,045,265.99	\$1,346,893.44		\$2,392,159.43

General Fund (10)

2130 Attendance Services

Elementary

Secondary

Federal

Total

100 Personnel Services – Salaries

100 Personnel Services – Salaries

17,727.26

Total Personnel Services – Salaries

\$17,727.26

200 Personnel Services – Employee Benefits

210 Group Insurance – Contracted Provider

24.64

220 Social Security Contributions

1,356.16

230 PSERS Retirement Contributions

6,193.88

260 Workers' Compensation

101.23

Total Personnel Services – Employee Benefits

\$7,675.91

500 Other Purchased Services

580 Travel

394.61

Total Other Purchased Services

\$394.61

Total 2130 Attendance Services

\$25,797.78

General Fund (10)

2140 Psychological Services

	<u>Elementary</u>	<u>Secondary</u>	<u>Federal</u>	<u>Total</u>
100 Personnel Services – Salaries				
100 Personnel Services – Salaries	27,957.01	13,315.13	474,541.68	515,813.82
Total Personnel Services – Salaries	\$27,957.01	\$13,315.13	\$474,541.68	\$515,813.82
200 Personnel Services – Employee Benefits				
210 Group Insurance – Contracted Provider	456.62	386.20	685.51	1,528.33
220 Social Security Contributions	2,062.83	957.97	35,486.20	38,507.00
230 PSERS Retirement Contributions	58,786.50	38,594.16	82,380.40	179,761.06
260 Workers' Compensation	1,670.25	1,113.49		2,783.74
270 Group Insurance – Self-Insurance	16,310.91	12,198.00	73,252.70	101,761.61
292 Health Savings Accounts	31.20	28.80	3,375.00	3,435.00
Total Personnel Services – Employee Benefits	\$79,318.31	\$53,278.62	\$195,179.81	\$327,776.74
300 Purchased Professional and Technical Services				
322 Professional Educational Services – Ius	1,873.96			1,873.96
329 Professional Educational Services – Other	409.36	377.88		787.24
330 Other Professional Services	11,194.52	4,000.00	4,212.50	19,407.02
Total Purchased Professional and Technical Services	\$13,477.84	\$4,377.88	\$4,212.50	\$22,068.22
500 Other Purchased Services				
530 Communications	2,320.53	2,142.03		4,462.56
580 Travel	45.74			45.74
Total Other Purchased Services	\$2,366.27	\$2,142.03		\$4,508.30
600 Supplies				
610 General Supplies	7,805.58	7,205.16		15,010.74
650 Supplies & Fees – Technology Related	3,302.21	3,048.19		6,350.40
Total Supplies	\$11,107.79	\$10,253.35		\$21,361.14
Total 2140 Psychological Services	\$134,227.22	\$83,367.01	\$673,933.99	\$891,528.22

General Fund (10)

	<u>Elementary</u>	<u>Secondary</u>	<u>Federal</u>	<u>Total</u>
2160 Social Work Services				
100 Personnel Services – Salaries				
100 Personnel Services – Salaries			129,679.00	129,679.00
Total Personnel Services – Salaries			\$129,679.00	\$129,679.00
200 Personnel Services – Employee Benefits				
210 Group Insurance – Contracted Provider			281.28	281.28
220 Social Security Contributions			9,532.83	9,532.83
230 PSERS Retirement Contributions			22,654.92	45,309.85
270 Group Insurance – Self-Insurance			31,871.16	31,871.16
292 Health Savings Accounts			750.00	750.00
Total Personnel Services – Employee Benefits			\$65,090.19	\$87,745.12
500 Other Purchased Services				
580 Travel				210.62
Total Other Purchased Services				\$210.62
600 Supplies				
610 General Supplies				10.79
630 Food				147.00
640 Books and Periodicals				22.50
Total Supplies				\$180.29
Total 2160 Social Work Services			\$194,769.19	\$217,815.03

General Fund (10)

2170 Student Accounting Services

100 Personnel Services – Salaries

	<u>Elementary</u>	<u>Secondary</u>	<u>Federal</u>	<u>Total</u>
--	-------------------	------------------	----------------	--------------

100 Personnel Services – Salaries				89,341.77
-----------------------------------	--	--	--	-----------

Total Personnel Services – Salaries				\$89,341.77
--	--	--	--	--------------------

200 Personnel Services – Employee Benefits

210 Group Insurance – Contracted Provider				325.75
220 Social Security Contributions				6,700.74
230 PSERS Retirement Contributions				30,955.96
260 Workers' Compensation				708.58
270 Group Insurance – Self-Insurance				17,664.01
292 Health Savings Accounts				750.00

Total Personnel Services – Employee Benefits				\$57,105.04
---	--	--	--	--------------------

600 Supplies

610 General Supplies				22.76
650 Supplies & Fees – Technology Related				61,498.00

Total Supplies				\$61,520.76
-----------------------	--	--	--	--------------------

800 Other Objects

810 Dues and Fees				580.84
-------------------	--	--	--	--------

Total Other Objects				\$580.84
----------------------------	--	--	--	-----------------

Total 2170 Student Accounting Services				\$208,548.41
---	--	--	--	---------------------

General Fund (10)

2190 Other Student Services

300 Purchased Professional and Technical Services

	<u>Elementary</u>	<u>Secondary</u>	<u>Federal</u>	<u>Total</u>
390 Other Purchased Professional and Technical Services	6,400.25	6,063.44		12,463.69
Total Purchased Professional and Technical Services	\$6,400.25	\$6,063.44		\$12,463.69

600 Supplies

610 General Supplies	1,046.71	966.20		2,012.91
Total Supplies	\$1,046.71	\$966.20		\$2,012.91

Total 2190 Other Student Services	\$7,446.96	\$7,029.64		\$14,476.60
--	-------------------	-------------------	--	--------------------

General Fund (10)

2200 Support Services – Instructional Staff

	<u>Elementary</u>	<u>Secondary</u>	<u>Federal</u>	<u>Total</u>
100 Personnel Services – Salaries				
100 Personnel Services – Salaries	1,022,457.67	722,247.90	627,275.14	2,371,980.71
Total Personnel Services – Salaries	\$1,022,457.67	\$722,247.90	\$627,275.14	\$2,371,980.71
200 Personnel Services – Employee Benefits				
210 Group Insurance – Contracted Provider	3,184.04	2,486.77	892.39	6,563.20
220 Social Security Contributions	76,785.49	54,107.13	46,672.71	177,565.33
230 PSERS Retirement Contributions	413,764.98	306,825.33	109,570.20	830,160.51
240 Tuition Reimbursement	176,036.99	136,757.21		312,794.20
250 Unemployment Compensation	1,289.19			1,289.19
260 Workers' Compensation	5,595.84	4,324.39		9,920.23
270 Group Insurance – Self-Insurance	178,477.23	149,728.28	108,489.08	436,694.59
292 Health Savings Accounts	4,867.67	3,629.86	4,687.50	13,185.03
299 All Other Employee Benefits	2,302.20	193.80	568.74	3,064.74
Total Personnel Services – Employee Benefits	\$862,303.63	\$658,052.77	\$270,880.62	\$1,791,237.02
300 Purchased Professional and Technical Services				
322 Professional Educational Services – Ius	160.00	160.00		320.00
329 Professional Educational Services – Other	3,626.80	2,492.40		6,119.20
340 Technical Services	27,440.11	25,084.12		52,524.23
360 Employee Training and Development Services	3,443.00	4,894.60		8,337.60
Total Purchased Professional and Technical Services	\$34,669.91	\$32,631.12		\$67,301.03
400 Purchased Property Services				
430 Repairs and Maintenance Services	2,111.59	1,949.16		4,060.75
Total Purchased Property Services	\$2,111.59	\$1,949.16		\$4,060.75
500 Other Purchased Services				
530 Communications	1,843.38	1,704.00		3,547.38
580 Travel	3,185.71	5,054.09		8,239.80
Total Other Purchased Services	\$5,029.09	\$6,758.09		\$11,787.18
600 Supplies				
610 General Supplies	32,271.65	29,069.65	1,298.17	62,639.47
630 Food	832.41	459.23		1,291.64
640 Books and Periodicals	26,798.44	19,875.81	3,347.21	50,021.46
650 Supplies & Fees – Technology Related	186,936.49	174,650.49	12,967.50	374,554.48
Total Supplies	\$246,838.99	\$224,055.18	\$17,612.88	\$488,507.05
800 Other Objects				
810 Dues and Fees	375.00	60.00		435.00
Total Other Objects	\$375.00	\$60.00		\$435.00
Total 2200 Support Services – Instructional Staff	\$2,173,785.88	\$1,645,754.22	\$915,768.64	\$4,735,308.74

General Fund (10)

	<u>Elementary</u>	<u>Secondary</u>	<u>Federal</u>	<u>Total</u>
2210 Supervision of Educational Media Services				
100 Personnel Services – Salaries				
100 Personnel Services – Salaries			113,544.38	113,544.38
Total Personnel Services – Salaries			\$113,544.38	\$113,544.38
200 Personnel Services – Employee Benefits				
210 Group Insurance – Contracted Provider			140.64	140.64
220 Social Security Contributions			8,565.25	8,565.25
230 PSERS Retirement Contributions	10,314.82	9,521.37	19,836.19	39,672.38
270 Group Insurance – Self-Insurance			16,442.64	16,442.64
Total Personnel Services – Employee Benefits	\$10,314.82	\$9,521.37	\$44,984.72	\$64,820.91
Total 2210 Supervision of Educational Media Services	\$10,314.82	\$9,521.37	\$158,529.10	\$178,365.29

General Fund (10)

	<u>Elementary</u>	<u>Secondary</u>	<u>Federal</u>	<u>Total</u>
2211 Supervision of Educational Media Services – Head of Component				
100 Personnel Services – Salaries				
100 Personnel Services – Salaries			113,544.38	113,544.38
Total Personnel Services – Salaries			\$113,544.38	\$113,544.38
200 Personnel Services – Employee Benefits				
210 Group Insurance – Contracted Provider			140.64	140.64
220 Social Security Contributions			8,565.25	8,565.25
230 PSERS Retirement Contributions	10,314.82	9,521.37	19,836.19	39,672.38
270 Group Insurance – Self-Insurance			16,442.64	16,442.64
Total Personnel Services – Employee Benefits	\$10,314.82	\$9,521.37	\$44,984.72	\$64,820.91
Total 2211 Supervision of Educational Media Services – Head of Component	\$10,314.82	\$9,521.37	\$158,529.10	\$178,365.29

General Fund (10)

2220 Technology Support Services

	<u>Elementary</u>	<u>Secondary</u>	<u>Federal</u>	<u>Total</u>
100 Personnel Services – Salaries				
100 Personnel Services – Salaries	290,926.17	264,417.03	214,990.00	770,333.20
Total Personnel Services – Salaries	\$290,926.17	\$264,417.03	\$214,990.00	\$770,333.20
200 Personnel Services – Employee Benefits				
210 Group Insurance – Contracted Provider	974.37	901.22	363.08	2,238.67
220 Social Security Contributions	21,684.91	19,716.49	15,859.85	57,261.25
230 PSERS Retirement Contributions	120,960.53	110,212.78	37,558.75	268,732.06
260 Workers' Compensation	404.91	404.91		809.82
270 Group Insurance – Self-Insurance	79,484.45	73,509.16	42,138.10	195,131.71
292 Health Savings Accounts	1,170.00	1,080.00	2,250.00	4,500.00
Total Personnel Services – Employee Benefits	\$224,679.17	\$205,824.56	\$98,169.78	\$528,673.51
300 Purchased Professional and Technical Services				
340 Technical Services	27,440.11	25,084.12		52,524.23
Total Purchased Professional and Technical Services	\$27,440.11	\$25,084.12		\$52,524.23
400 Purchased Property Services				
430 Repairs and Maintenance Services	2,111.59	1,949.16		4,060.75
Total Purchased Property Services	\$2,111.59	\$1,949.16		\$4,060.75
500 Other Purchased Services				
530 Communications	1,812.51	1,673.09		3,485.60
580 Travel	1,745.30	1,611.04		3,356.34
Total Other Purchased Services	\$3,557.81	\$3,284.13		\$6,841.94
600 Supplies				
610 General Supplies	28,751.25	27,329.25		56,080.50
650 Supplies & Fees – Technology Related	111,474.26	123,789.45	10,168.20	245,431.91
Total Supplies	\$140,225.51	\$151,118.70	\$10,168.20	\$301,512.41
Total 2220 Technology Support Services	\$688,940.36	\$651,677.70	\$323,327.98	\$1,663,946.04

General Fund (10)

2250 School Library Services

	<u>Elementary</u>	<u>Secondary</u>	<u>Federal</u>	<u>Total</u>
100 Personnel Services – Salaries				
100 Personnel Services – Salaries	365,958.26	206,198.25		572,156.51
Total Personnel Services – Salaries	\$365,958.26	\$206,198.25		\$572,156.51
200 Personnel Services – Employee Benefits				
210 Group Insurance – Contracted Provider	974.95	513.18		1,488.13
220 Social Security Contributions	27,460.09	15,659.34		43,119.43
230 PSERS Retirement Contributions	127,647.45	74,211.04		201,858.49
250 Unemployment Compensation	1,289.19			1,289.19
260 Workers' Compensation	2,176.38	1,265.32		3,441.70
270 Group Insurance – Self-Insurance	47,051.65	30,197.58		77,249.23
292 Health Savings Accounts	1,500.00	1,125.00		2,625.00
Total Personnel Services – Employee Benefits	\$208,099.71	\$122,971.46		\$331,071.17
300 Purchased Professional and Technical Services				
329 Professional Educational Services – Other	3,626.80	2,492.40		6,119.20
Total Purchased Professional and Technical Services	\$3,626.80	\$2,492.40		\$6,119.20
600 Supplies				
610 General Supplies	3,260.43	1,500.43		4,760.86
640 Books and Periodicals	25,054.27	18,958.80		44,013.07
650 Supplies & Fees – Technology Related	36,752.12	16,583.39		53,335.51
Total Supplies	\$65,066.82	\$37,042.62		\$102,109.44
800 Other Objects				
810 Dues and Fees		60.00		60.00
Total Other Objects		\$60.00		\$60.00
Total 2250 School Library Services	\$642,751.59	\$368,764.73		\$1,011,516.32

General Fund (10)

2260 Instruction and Curriculum Development Services

	<u>Elementary</u>	<u>Secondary</u>	<u>Federal</u>	<u>Total</u>
100 Personnel Services – Salaries				
100 Personnel Services – Salaries	357,150.44	245,708.82	296,555.29	899,414.55
Total Personnel Services – Salaries	\$357,150.44	\$245,708.82	\$296,555.29	\$899,414.55
200 Personnel Services – Employee Benefits				
210 Group Insurance – Contracted Provider	1,234.72	1,072.37	388.67	2,695.76
220 Social Security Contributions	27,012.82	18,287.19	22,080.42	67,380.43
230 PSERS Retirement Contributions	151,899.25	110,810.35	51,411.66	314,121.26
260 Workers' Compensation	3,014.55	2,654.16		5,668.71
270 Group Insurance – Self-Insurance	51,941.13	46,021.54	49,908.34	147,871.01
292 Health Savings Accounts	2,197.67	1,424.86	2,437.50	6,060.03
299 All Other Employee Benefits	2,302.20	193.80	568.74	3,064.74
Total Personnel Services – Employee Benefits	\$239,602.34	\$180,464.27	\$126,795.33	\$546,861.94
500 Other Purchased Services				
530 Communications	30.61	30.64		61.25
580 Travel	1,349.87	1,246.03		2,595.90
Total Other Purchased Services	\$1,380.48	\$1,276.67		\$2,657.15
600 Supplies				
610 General Supplies	259.97	239.97		499.94
630 Food	632.41	426.87		1,059.28
640 Books and Periodicals	142.74	131.76		274.50
650 Supplies & Fees – Technology Related	21,231.18	19,598.02		40,829.20
Total Supplies	\$22,266.30	\$20,396.62		\$42,662.92
800 Other Objects				
810 Dues and Fees	375.00			375.00
Total Other Objects	\$375.00			\$375.00
Total 2260 Instruction and Curriculum Development Services	\$620,774.56	\$447,846.38	\$423,350.62	\$1,491,971.56

General Fund (10)

2270 Instructional Staff Professional Development Services

	<u>Elementary</u>	<u>Secondary</u>	<u>Federal</u>	<u>Total</u>
100 Personnel Services – Salaries				
100 Personnel Services – Salaries	8,422.80	5,923.80		14,346.60
Total Personnel Services – Salaries	\$8,422.80	\$5,923.80		\$14,346.60
200 Personnel Services – Employee Benefits				
220 Social Security Contributions	627.67	444.11		1,071.78
230 PSERS Retirement Contributions	2,942.93	2,069.79		5,012.72
240 Tuition Reimbursement	176,036.99	136,757.21		312,794.20
Total Personnel Services – Employee Benefits	\$179,607.59	\$139,271.11		\$318,878.70
300 Purchased Professional and Technical Services				
322 Professional Educational Services – lus	160.00	160.00		320.00
360 Employee Training and Development Services	3,443.00	4,894.60		8,337.60
Total Purchased Professional and Technical Services	\$3,603.00	\$5,054.60		\$8,657.60
500 Other Purchased Services				
530 Communications	0.26	0.27		0.53
580 Travel	90.54	2,197.02		2,287.56
Total Other Purchased Services	\$90.80	\$2,197.29		\$2,288.09
600 Supplies				
630 Food	200.00	32.36		232.36
640 Books and Periodicals	1,601.43	785.25	3,347.21	5,733.89
650 Supplies & Fees – Technology Related	17,478.93	14,679.63	2,799.30	34,957.86
Total Supplies	\$19,280.36	\$15,497.24	\$6,146.51	\$40,924.11
Total 2270 Instructional Staff Professional Development Services	\$211,004.55	\$167,944.04	\$6,146.51	\$385,095.10

General Fund (10)

2280 Nonpublic Support Services

100 Personnel Services – Salaries

100 Personnel Services – Salaries

Total Personnel Services – Salaries

200 Personnel Services – Employee Benefits

220 Social Security Contributions

230 PSERS Retirement Contributions

Total Personnel Services – Employee Benefits

600 Supplies

610 General Supplies

Total Supplies

Total 2280 Nonpublic Support Services

	<u>Elementary</u>	<u>Secondary</u>	<u>Federal</u>	<u>Total</u>
			2,185.47	2,185.47
			\$2,185.47	\$2,185.47
			167.19	167.19
			763.60	763.60
			\$930.79	\$930.79
			1,298.17	1,298.17
			\$1,298.17	\$1,298.17
			\$4,414.43	\$4,414.43

General Fund (10)

2300 Support Services – Administration

	<u>Elementary</u>	<u>Secondary</u>	<u>Federal</u>	<u>Total</u>
100 Personnel Services – Salaries				
100 Personnel Services – Salaries	1,328,034.14	1,074,203.77		3,077,883.79
Total Personnel Services – Salaries	\$1,328,034.14	\$1,074,203.77		\$3,077,883.79
200 Personnel Services – Employee Benefits				
210 Group Insurance – Contracted Provider	3,998.64	4,044.05		9,767.45
220 Social Security Contributions	99,602.60	80,913.33		227,493.12
230 PSERS Retirement Contributions	464,028.06	375,290.10		1,075,391.33
260 Workers' Compensation	7,743.81	6,276.06		17,866.48
270 Group Insurance – Self-Insurance	240,259.16	243,442.14		568,848.80
291 Other Retirement Plans	47,519.90			57,510.40
292 Health Savings Accounts	9,124.98	10,300.00		21,906.22
299 All Other Employee Benefits	7,940.94	4,633.27		14,474.21
Total Personnel Services – Employee Benefits	\$880,218.09	\$724,898.95		\$1,993,258.01
300 Purchased Professional and Technical Services				
310 Official / Administrative Services				128,420.82
330 Other Professional Services	13,433.51	13,282.05		193,646.63
390 Other Purchased Professional and Technical Services		17,150.00		19,133.18
Total Purchased Professional and Technical Services	\$13,433.51	\$30,432.05		\$341,200.63
500 Other Purchased Services				
520 Insurance – General				516.00
530 Communications	667.36	2,194.90		15,537.23
549 Other Advertising/Public Relations				1,113.08
550 Printing and Binding				4,883.58
580 Travel		317.93		1,688.64
Total Other Purchased Services	\$667.36	\$2,512.83		\$23,738.53
600 Supplies				
610 General Supplies	1,463.96	14,974.88		27,548.99
630 Food	3,488.94	1,487.02		7,796.69
640 Books and Periodicals	774.54	1,173.35		2,063.11
650 Supplies & Fees – Technology Related	345.52	4,404.03		15,866.79
Total Supplies	\$6,072.96	\$22,039.28		\$53,275.58
800 Other Objects				
810 Dues and Fees	2,037.00	2,975.00		35,124.64
820 Claims and Judgments Against the LEA				47,563.00
890 Miscellaneous Expenditures		400.00		400.00
Total Other Objects	\$2,037.00	\$3,375.00		\$83,087.64
Total 2300 Support Services – Administration	\$2,230,463.06	\$1,857,461.88		\$5,572,444.18

General Fund (10)

2310 Board Services

Elementary Secondary Federal Total

300	<u>Purchased Professional and Technical Services</u>				
	390 Other Purchased Professional and Technical Services				1,560.00
Total Purchased Professional and Technical Services					\$1,560.00
500	<u>Other Purchased Services</u>				
	520 Insurance – General				100.00
	549 Other Advertising/Public Relations				1,113.08
Total Other Purchased Services					\$1,213.08
600	<u>Supplies</u>				
	610 General Supplies				1,777.71
	630 Food				694.75
	650 Supplies & Fees – Technology Related				2,700.00
Total Supplies					\$5,172.46
800	<u>Other Objects</u>				
	810 Dues and Fees				16,604.57
	820 Claims and Judgments Against the LEA				47,563.00
Total Other Objects					\$64,167.57
Total 2310 Board Services					\$72,113.11

General Fund (10)

2330 Tax Assessment and Collection Services

Elementary Secondary Federal Total

100	<u>Personnel Services – Salaries</u>				
	100 Personnel Services – Salaries				30,573.55
Total Personnel Services – Salaries					\$30,573.55
200	<u>Personnel Services – Employee Benefits</u>				
	210 Group Insurance – Contracted Provider				75.64
	220 Social Security Contributions				2,306.59
	230 PSERS Retirement Contributions				10,683.90
	260 Workers' Compensation				151.84
	270 Group Insurance – Self-Insurance				4,866.44
	292 Health Savings Accounts				187.50
Total Personnel Services – Employee Benefits					\$18,271.91
300	<u>Purchased Professional and Technical Services</u>				
	310 Official / Administrative Services				128,420.82
Total Purchased Professional and Technical Services					\$128,420.82
500	<u>Other Purchased Services</u>				
	520 Insurance – General				416.00
	530 Communications				7,014.97
	550 Printing and Binding				4,883.58
Total Other Purchased Services					\$12,314.55
600	<u>Supplies</u>				
	650 Supplies & Fees – Technology Related				7,990.00
Total Supplies					\$7,990.00
800	<u>Other Objects</u>				
	810 Dues and Fees				9,379.07
Total Other Objects					\$9,379.07
Total 2330 Tax Assessment and Collection Services					\$206,949.90

General Fund (10)

2350 Legal and Accounting Services

Elementary

Secondary

Federal

Total

300 Purchased Professional and Technical Services

330 Other Professional Services

141,931.07

Total Purchased Professional and Technical Services

\$141,931.07

Total 2350 Legal and Accounting Services

\$141,931.07

General Fund (10)

2360 Office of the Superintendent / Executive Director Services

	<u>Elementary</u>	<u>Secondary</u>	<u>Federal</u>	<u>Total</u>
100 Personnel Services – Salaries				
100 Personnel Services – Salaries				609,597.33
Total Personnel Services – Salaries				\$609,597.33
200 Personnel Services – Employee Benefits				
210 Group Insurance – Contracted Provider				1,535.81
220 Social Security Contributions				42,004.93
230 PSERS Retirement Contributions				212,994.27
260 Workers' Compensation				3,492.32
270 Group Insurance – Self-Insurance				74,392.07
291 Other Retirement Plans				9,990.50
292 Health Savings Accounts				2,293.74
299 All Other Employee Benefits				1,298.00
Total Personnel Services – Employee Benefits				\$348,001.64
500 Other Purchased Services				
530 Communications	167.36	154.48		321.84
580 Travel				1,370.71
Total Other Purchased Services	\$167.36	\$154.48		\$1,692.55
600 Supplies				
610 General Supplies				95.50
630 Food				2,090.98
640 Books and Periodicals				115.22
650 Supplies & Fees – Technology Related				427.24
Total Supplies				\$2,728.94
800 Other Objects				
810 Dues and Fees				4,129.00
Total Other Objects				\$4,129.00
Total 2360 Office of the Superintendent / Executive Director Services	\$167.36	\$154.48		\$966,149.46

General Fund (10)

2370 Community Relations Services

Elementary

Secondary

Federal

Total

100 Personnel Services – Salaries

100 Personnel Services – Salaries

35,475.00

Total Personnel Services – Salaries

\$35,475.00

200 Personnel Services – Employee Benefits

210 Group Insurance – Contracted Provider

113.31

220 Social Security Contributions

2,665.67

230 PSERS Retirement Contributions

12,395.00

260 Workers' Compensation

202.45

270 Group Insurance – Self-Insurance

5,888.99

Total Personnel Services – Employee Benefits

\$21,265.42

Total 2370 Community Relations Services

\$56,740.42

General Fund (10)

2380 Office of the Principal Services

	<u>Elementary</u>	<u>Secondary</u>	<u>Federal</u>	<u>Total</u>
100 Personnel Services – Salaries				
100 Personnel Services – Salaries	1,328,034.14	1,074,203.77		2,402,237.91
Total Personnel Services – Salaries	\$1,328,034.14	\$1,074,203.77		\$2,402,237.91
200 Personnel Services – Employee Benefits				
210 Group Insurance – Contracted Provider	3,998.64	4,044.05		8,042.69
220 Social Security Contributions	99,602.60	80,913.33		180,515.93
230 PSERS Retirement Contributions	464,028.06	375,290.10		839,318.16
260 Workers' Compensation	7,743.81	6,276.06		14,019.87
270 Group Insurance – Self-Insurance	240,259.16	243,442.14		483,701.30
291 Other Retirement Plans	47,519.90			47,519.90
292 Health Savings Accounts	9,124.98	10,300.00		19,424.98
299 All Other Employee Benefits	7,940.94	4,633.27		12,574.21
Total Personnel Services – Employee Benefits	\$880,218.09	\$724,898.95		\$1,605,117.04
300 Purchased Professional and Technical Services				
330 Other Professional Services	13,433.51	13,282.05		26,715.56
390 Other Purchased Professional and Technical Services		17,150.00		17,150.00
Total Purchased Professional and Technical Services	\$13,433.51	\$30,432.05		\$43,865.56
500 Other Purchased Services				
530 Communications	500.00	2,040.42		2,540.42
580 Travel		317.93		317.93
Total Other Purchased Services	\$500.00	\$2,358.35		\$2,858.35
600 Supplies				
610 General Supplies	1,463.96	14,974.88		16,438.84
630 Food	3,488.94	1,487.02		4,975.96
640 Books and Periodicals	774.54	1,173.35		1,947.89
650 Supplies & Fees – Technology Related	345.52	4,404.03		4,749.55
Total Supplies	\$6,072.96	\$22,039.28		\$28,112.24
800 Other Objects				
810 Dues and Fees	2,037.00	2,975.00		5,012.00
890 Miscellaneous Expenditures		400.00		400.00
Total Other Objects	\$2,037.00	\$3,375.00		\$5,412.00
Total 2380 Office of the Principal Services	\$2,230,295.70	\$1,857,307.40		\$4,087,603.10

General Fund (10)

2390 Other Administration Services

Elementary

Secondary

Federal

Total

200 Personnel Services – Employee Benefits

299 All Other Employee Benefits

602.00

Total Personnel Services – Employee Benefits

\$602.00

300 Purchased Professional and Technical Services

330 Other Professional Services

25,000.00

390 Other Purchased Professional and Technical Services

423.18

Total Purchased Professional and Technical Services

\$25,423.18

500 Other Purchased Services

530 Communications

5,660.00

Total Other Purchased Services

\$5,660.00

600 Supplies

610 General Supplies

9,236.94

630 Food

35.00

Total Supplies

\$9,271.94

Total 2390 Other Administration Services

\$40,957.12

General Fund (10)

	<u>Elementary</u>	<u>Secondary</u>	<u>Federal</u>	<u>Total</u>
2400 Support Services – Pupil Health				
100 Personnel Services – Salaries				
100 Personnel Services – Salaries			71,082.47	695,837.93
Total Personnel Services – Salaries			\$71,082.47	\$695,837.93
200 Personnel Services – Employee Benefits				
210 Group Insurance – Contracted Provider			53.28	1,847.51
220 Social Security Contributions			5,461.63	51,996.92
230 PSERS Retirement Contributions			12,418.12	242,785.20
260 Workers' Compensation				3,593.55
270 Group Insurance – Self-Insurance			8,529.54	128,122.71
292 Health Savings Accounts				2,075.00
299 All Other Employee Benefits			1,013.99	1,013.99
Total Personnel Services – Employee Benefits			\$27,476.56	\$431,434.88
300 Purchased Professional and Technical Services				
322 Professional Educational Services – Ius				38,776.46
330 Other Professional Services				384,982.37
Total Purchased Professional and Technical Services				\$423,758.83
500 Other Purchased Services				
580 Travel				161.23
Total Other Purchased Services				\$161.23
600 Supplies				
610 General Supplies				22,128.28
Total Supplies				\$22,128.28
Total 2400 Support Services – Pupil Health			\$98,559.03	\$1,573,321.15

General Fund (10)

2420 Medical Services

Elementary Secondary Federal Total

100 Personnel Services – Salaries				
100 Personnel Services – Salaries				35,499.10
Total Personnel Services – Salaries				\$35,499.10
200 Personnel Services – Employee Benefits				
210 Group Insurance – Contracted Provider				124.93
220 Social Security Contributions				2,694.58
230 PSERS Retirement Contributions				12,185.00
260 Workers' Compensation				404.91
270 Group Insurance – Self-Insurance				4,246.56
Total Personnel Services – Employee Benefits				\$19,655.98
300 Purchased Professional and Technical Services				
322 Professional Educational Services – lus				38,776.46
330 Other Professional Services				239,889.66
Total Purchased Professional and Technical Services				\$278,666.12
600 Supplies				
610 General Supplies				257.26
Total Supplies				\$257.26
Total 2420 Medical Services				\$334,078.46

General Fund (10)

2440 Nursing Services

100 Personnel Services – Salaries

	<u>Elementary</u>	<u>Secondary</u>	<u>Federal</u>	<u>Total</u>
100 Personnel Services – Salaries			71,082.47	660,338.83
Total Personnel Services – Salaries			\$71,082.47	\$660,338.83

200 Personnel Services – Employee Benefits

210 Group Insurance – Contracted Provider			53.28	1,722.58
220 Social Security Contributions			5,461.63	49,302.34
230 PSERS Retirement Contributions			12,418.12	230,600.20
260 Workers' Compensation				3,188.64
270 Group Insurance – Self-Insurance			8,529.54	123,876.15
292 Health Savings Accounts				2,075.00
299 All Other Employee Benefits			1,013.99	1,013.99
Total Personnel Services – Employee Benefits			\$27,476.56	\$411,778.90

300 Purchased Professional and Technical Services

330 Other Professional Services				140,884.96
Total Purchased Professional and Technical Services				\$140,884.96

500 Other Purchased Services

580 Travel				161.23
Total Other Purchased Services				\$161.23

600 Supplies

610 General Supplies				20,521.69
Total Supplies				\$20,521.69

Total 2440 Nursing Services

			\$98,559.03	\$1,233,685.61
--	--	--	--------------------	-----------------------

General Fund (10)

2450 Nonpublic Health Services

Elementary

Secondary

Federal

Total

600 Supplies

610 General Supplies

1,349.33

Total Supplies

\$1,349.33

Total 2450 Nonpublic Health Services

\$1,349.33

General Fund (10)

2490 Other Health Services

Elementary

Secondary

Federal

Total

300 Purchased Professional and Technical Services

330 Other Professional Services

4,207.75

Total Purchased Professional and Technical Services

\$4,207.75

Total 2490 Other Health Services

\$4,207.75

General Fund (10)

2500 Support Services – Business

Elementary Secondary Federal Total

100	<u>Personnel Services – Salaries</u>				
	100 Personnel Services – Salaries				414,856.26
Total Personnel Services – Salaries					\$414,856.26
200	<u>Personnel Services – Employee Benefits</u>				
	210 Group Insurance – Contracted Provider				1,253.50
	220 Social Security Contributions				31,215.24
	230 PSERS Retirement Contributions				144,960.14
	260 Workers' Compensation				2,328.20
	270 Group Insurance – Self-Insurance				72,148.52
	292 Health Savings Accounts				3,000.00
	299 All Other Employee Benefits				3,143.21
Total Personnel Services – Employee Benefits					\$258,048.81
300	<u>Purchased Professional and Technical Services</u>				
	330 Other Professional Services				10,037.58
	390 Other Purchased Professional and Technical Services				42,626.39
Total Purchased Professional and Technical Services					\$52,663.97
500	<u>Other Purchased Services</u>				
	530 Communications				5,228.98
	580 Travel				267.33
Total Other Purchased Services					\$5,496.31
600	<u>Supplies</u>				
	610 General Supplies				7,526.75
	650 Supplies & Fees – Technology Related				26,104.33
Total Supplies					\$33,631.08
800	<u>Other Objects</u>				
	810 Dues and Fees				23,288.58
Total Other Objects					\$23,288.58
Total 2500 Support Services – Business					\$787,985.01

General Fund (10)

	<u>Elementary</u>	<u>Secondary</u>	<u>Federal</u>	<u>Total</u>
2510 Fiscal Services				
100 Personnel Services – Salaries				
100 Personnel Services – Salaries				300,622.37
Total Personnel Services – Salaries				\$300,622.37
200 Personnel Services – Employee Benefits				
210 Group Insurance – Contracted Provider				951.68
220 Social Security Contributions				22,630.72
230 PSERS Retirement Contributions				105,041.26
260 Workers' Compensation				1,670.23
270 Group Insurance – Self-Insurance				64,414.34
292 Health Savings Accounts				2,625.00
299 All Other Employee Benefits				3,143.21
Total Personnel Services – Employee Benefits				\$200,476.44
300 Purchased Professional and Technical Services				
390 Other Purchased Professional and Technical Services				39,281.39
Total Purchased Professional and Technical Services				\$39,281.39
500 Other Purchased Services				
530 Communications				5,228.98
580 Travel				267.33
Total Other Purchased Services				\$5,496.31
600 Supplies				
610 General Supplies				7,526.75
650 Supplies & Fees – Technology Related				26,104.33
Total Supplies				\$33,631.08
800 Other Objects				
810 Dues and Fees				23,288.58
Total Other Objects				\$23,288.58
Total 2510 Fiscal Services				\$602,796.17

General Fund (10)

2511 Supervision of Fiscal Services - Head of Component

Elementary Secondary Federal Total

100	<u>Personnel Services – Salaries</u>			
	100 Personnel Services – Salaries			107,910.83
Total Personnel Services – Salaries				\$107,910.83
200	<u>Personnel Services – Employee Benefits</u>			
	210 Group Insurance – Contracted Provider			252.91
	220 Social Security Contributions			8,502.17
	230 PSERS Retirement Contributions			37,704.00
	260 Workers' Compensation			556.74
	270 Group Insurance – Self-Insurance			13,084.15
	292 Health Savings Accounts			562.50
	299 All Other Employee Benefits			1,769.96
Total Personnel Services – Employee Benefits				\$62,432.43
500	<u>Other Purchased Services</u>			
	580 Travel			267.33
Total Other Purchased Services				\$267.33
800	<u>Other Objects</u>			
	810 Dues and Fees			335.00
Total Other Objects				\$335.00
Total 2511 Supervision of Fiscal Services - Head of Component				\$170,945.59

General Fund (10)

2513 Receiving and Disbursing Funds Services

Elementary

Secondary

Federal

Total

800 Other Objects

810 Dues and Fees

29.62

Total Other Objects

\$29.62

Total 2513 Receiving and Disbursing Funds Services

\$29.62

General Fund (10)

2514 Payroll Services

Elementary

Secondary

Federal

Total

100 Personnel Services – Salaries

100 Personnel Services – Salaries

88,927.20

Total Personnel Services – Salaries

\$88,927.20

200 Personnel Services – Employee Benefits

210 Group Insurance – Contracted Provider

358.27

220 Social Security Contributions

6,278.99

230 PSERS Retirement Contributions

31,073.66

260 Workers' Compensation

506.13

270 Group Insurance – Self-Insurance

23,310.63

292 Health Savings Accounts

1,125.00

299 All Other Employee Benefits

433.99

Total Personnel Services – Employee Benefits

\$63,086.67

600 Supplies

610 General Supplies

431.16

Total Supplies

\$431.16

Total 2514 Payroll Services

\$152,445.03

General Fund (10)

2515 Financial Accounting Services

Elementary Secondary Federal Total

100 Personnel Services – Salaries

100 Personnel Services – Salaries 103,784.34

Total Personnel Services – Salaries \$103,784.34

200 Personnel Services – Employee Benefits

210 Group Insurance – Contracted Provider 340.50

220 Social Security Contributions 7,849.56

230 PSERS Retirement Contributions 36,263.60

260 Workers' Compensation 607.36

270 Group Insurance – Self-Insurance 28,019.56

292 Health Savings Accounts 937.50

299 All Other Employee Benefits 939.26

Total Personnel Services – Employee Benefits \$74,957.34

500 Other Purchased Services

530 Communications 5,228.98

Total Other Purchased Services \$5,228.98

600 Supplies

610 General Supplies 7,095.59

650 Supplies & Fees – Technology Related 26,104.33

Total Supplies \$33,199.92

800 Other Objects

810 Dues and Fees 2,000.00

Total Other Objects \$2,000.00

Total 2515 Financial Accounting Services \$219,170.58

General Fund (10)

2519 Other Fiscal Services

Elementary

Secondary

Federal

Total

300 Purchased Professional and Technical Services

390 Other Purchased Professional and Technical Services

39,281.39

Total Purchased Professional and Technical Services

\$39,281.39

800 Other Objects

810 Dues and Fees

20,923.96

Total Other Objects

\$20,923.96

Total 2519 Other Fiscal Services

\$60,205.35

General Fund (10)

2520 Purchasing Services

Elementary

Secondary

Federal

Total

100 Personnel Services – Salaries

100 Personnel Services – Salaries

54,911.55

Total Personnel Services – Salaries

\$54,911.55

200 Personnel Services – Employee Benefits

210 Group Insurance – Contracted Provider

203.53

220 Social Security Contributions

4,046.42

230 PSERS Retirement Contributions

19,188.79

260 Workers' Compensation

303.68

270 Group Insurance – Self-Insurance

7,734.18

292 Health Savings Accounts

375.00

Total Personnel Services – Employee Benefits

\$31,851.60

Total 2520 Purchasing Services

\$86,763.15

General Fund (10)

2530 Warehousing and Distributing Services	<u>Elementary</u>	<u>Secondary</u>	<u>Federal</u>	<u>Total</u>
100 Personnel Services – Salaries				
100 Personnel Services – Salaries				25,447.45
Total Personnel Services – Salaries				\$25,447.45
200 Personnel Services – Employee Benefits				
210 Group Insurance – Contracted Provider				24.64
220 Social Security Contributions				1,946.70
230 PSERS Retirement Contributions				8,892.52
260 Workers' Compensation				151.84
Total Personnel Services – Employee Benefits				\$11,015.70
300 Purchased Professional and Technical Services				
330 Other Professional Services				5,279.86
Total Purchased Professional and Technical Services				\$5,279.86
Total 2530 Warehousing and Distributing Services				\$41,743.01

General Fund (10)

	<u>Elementary</u>	<u>Secondary</u>	<u>Federal</u>	<u>Total</u>
2540 Printing, Publishing and Duplicating Services				
300 <u>Purchased Professional and Technical Services</u>				
390 Other Purchased Professional and Technical Services				3,345.00
Total Purchased Professional and Technical Services				\$3,345.00
Total 2540 Printing, Publishing and Duplicating Services				\$3,345.00

General Fund (10)

	<u>Elementary</u>	<u>Secondary</u>	<u>Federal</u>	<u>Total</u>
2590 Other Support Services – Business				
100 Personnel Services – Salaries				
100 Personnel Services – Salaries				33,874.89
Total Personnel Services – Salaries				\$33,874.89
200 Personnel Services – Employee Benefits				
210 Group Insurance – Contracted Provider				73.65
220 Social Security Contributions				2,591.40
230 PSERS Retirement Contributions				11,837.57
260 Workers' Compensation				202.45
Total Personnel Services – Employee Benefits				\$14,705.07
300 Purchased Professional and Technical Services				
330 Other Professional Services				4,757.72
Total Purchased Professional and Technical Services				\$4,757.72
Total 2590 Other Support Services – Business				\$53,337.68

General Fund (10)

2600 Operation and Maintenance of Plant Services

Elementary Secondary Federal Total

100	<u>Personnel Services – Salaries</u>			
100	Personnel Services – Salaries			2,194,031.34
Total Personnel Services – Salaries				\$2,194,031.34
200	<u>Personnel Services – Employee Benefits</u>			
210	Group Insurance – Contracted Provider			7,966.60
220	Social Security Contributions			163,365.09
230	PSERS Retirement Contributions			755,355.17
250	Unemployment Compensation			1,144.94
260	Workers' Compensation			13,210.06
270	Group Insurance – Self-Insurance			661,286.61
292	Health Savings Accounts			10,920.02
299	All Other Employee Benefits			3,907.29
Total Personnel Services – Employee Benefits				\$1,617,155.78
300	<u>Purchased Professional and Technical Services</u>			
330	Other Professional Services			11,001.40
340	Technical Services			6,816.00
350	Security / Safety Services			200,494.80
Total Purchased Professional and Technical Services				\$218,312.20
400	<u>Purchased Property Services</u>			
410	Cleaning Services			565,218.46
420	Utility Services			105,753.28
430	Repairs and Maintenance Services			856,180.34
440	Rentals			11,744.94
450	Construction Services			1,298.42
460	Extermination Services			4,936.54
490	Other Purchased Property Services			100.00
Total Purchased Property Services				\$1,545,231.98
500	<u>Other Purchased Services</u>			
523	General Property and Liability Insurance			441,315.34
530	Communications			153,748.63
549	Other Advertising/Public Relations			543.28
580	Travel			332.82
Total Other Purchased Services				\$595,940.07
600	<u>Supplies</u>			
610	General Supplies	292,316.94	349,509.79	641,826.73
620	Energy			1,517,996.38
630	Food			232.55
640	Books and Periodicals			179.00
650	Supplies & Fees – Technology Related			9,342.00
Total Supplies		\$292,316.94	\$349,509.79	\$2,169,576.66
700	<u>Property</u>			
752	Capital Equipment – Original and Additional			86,188.31
Total Property				\$86,188.31

General Fund (10)

2600 Operation and Maintenance of Plant Services

Elementary

Secondary

Federal

Total

800 Other Objects

810 Dues and Fees

35.00

Total Other Objects

\$35.00

Total 2600 Operation and Maintenance of Plant Services

\$292,316.94

\$349,509.79

\$8,426,471.34

General Fund (10)

2610 Supervision of Operation and Maintenance of Plant Services

Elementary

Secondary

Federal

Total

100 Personnel Services – Salaries

100 Personnel Services – Salaries

217,473.45

Total Personnel Services – Salaries

\$217,473.45

200 Personnel Services – Employee Benefits

210 Group Insurance – Contracted Provider

506.16

220 Social Security Contributions

16,628.82

230 PSERS Retirement Contributions

75,985.76

260 Workers' Compensation

1,062.88

270 Group Insurance – Self-Insurance

26,506.32

292 Health Savings Accounts

1,250.00

299 All Other Employee Benefits

2,929.44

Total Personnel Services – Employee Benefits

\$124,869.38

Total 2610 Supervision of Operation and Maintenance of Plant Services

\$342,342.83

General Fund (10)

2611 Supervision of Operation and Maintenance of Plant Services – Head of Component

Elementary

Secondary

Federal

Total

100 Personnel Services – Salaries

100 Personnel Services – Salaries

124,437.23

Total Personnel Services – Salaries

\$124,437.23

200 Personnel Services – Employee Benefits

210 Group Insurance – Contracted Provider

246.23

220 Social Security Contributions

9,466.92

230 PSERS Retirement Contributions

43,478.78

260 Workers' Compensation

657.97

270 Group Insurance – Self-Insurance

9,297.79

292 Health Savings Accounts

450.00

299 All Other Employee Benefits

1,248.98

Total Personnel Services – Employee Benefits

\$64,846.67

Total 2611 Supervision of Operation and Maintenance of Plant Services – Head of Component

\$189,283.90

General Fund (10)

2619 Supervision of Operation and Maintenance of Plant Services – All Other Supervision

Elementary

Secondary

Federal

Total

100 Personnel Services – Salaries

100 Personnel Services – Salaries

93,036.22

Total Personnel Services – Salaries

\$93,036.22

200 Personnel Services – Employee Benefits

210 Group Insurance – Contracted Provider

259.93

220 Social Security Contributions

7,161.90

230 PSERS Retirement Contributions

32,506.98

260 Workers' Compensation

404.91

270 Group Insurance – Self-Insurance

17,208.53

292 Health Savings Accounts

800.00

299 All Other Employee Benefits

1,680.46

Total Personnel Services – Employee Benefits

\$60,022.71

Total 2619 Supervision of Operation and Maintenance of Plant Services – All Other Supervision

\$153,058.93

General Fund (10)

	<u>Elementary</u>	<u>Secondary</u>	<u>Federal</u>	<u>Total</u>
2620 Operation of Buildings Services				
100 Personnel Services – Salaries				
100 Personnel Services – Salaries				1,672,666.25
Total Personnel Services – Salaries				\$1,672,666.25
200 Personnel Services – Employee Benefits				
210 Group Insurance – Contracted Provider				6,401.76
220 Social Security Contributions				123,908.05
230 PSERS Retirement Contributions				583,391.32
250 Unemployment Compensation				796.99
260 Workers' Compensation				10,122.66
270 Group Insurance – Self-Insurance				573,624.27
292 Health Savings Accounts				7,995.02
Total Personnel Services – Employee Benefits				\$1,306,240.07
300 Purchased Professional and Technical Services				
340 Technical Services				6,816.00
350 Security / Safety Services				13,884.00
Total Purchased Professional and Technical Services				\$20,700.00
400 Purchased Property Services				
410 Cleaning Services				174,228.46
420 Utility Services				105,753.28
430 Repairs and Maintenance Services				753,012.79
440 Rentals				6,378.50
450 Construction Services				1,298.42
460 Extermination Services				4,936.54
490 Other Purchased Property Services				100.00
Total Purchased Property Services				\$1,045,707.99
500 Other Purchased Services				
523 General Property and Liability Insurance				441,315.34
530 Communications				153,748.63
549 Other Advertising/Public Relations				543.28
580 Travel				12.17
Total Other Purchased Services				\$595,619.42
600 Supplies				
610 General Supplies	270,856.98	303,039.41		573,896.39
620 Energy				1,508,549.13
630 Food				145.60
650 Supplies & Fees – Technology Related				3,780.00
Total Supplies				\$2,086,371.12
700 Property				
752 Capital Equipment – Original and Additional				86,188.31
Total Property				\$86,188.31
800 Other Objects				

LEA : 113364503 Manheim Township SD

Printed 11/21/2022 11:40:47 AM

General Fund (10)

	<u>Elementary</u>	<u>Secondary</u>	<u>Federal</u>	<u>Total</u>
2620 Operation of Buildings Services				
800 Other Objects				
810 Dues and Fees				35.00
Total Other Objects				\$35.00
Total 2620 Operation of Buildings Services	\$270,856.98	\$303,039.41		\$6,813,528.16

General Fund (10)

2630 Care and Upkeep of Grounds Services

Elementary

Secondary

Federal

Total

400 Purchased Property Services

410 Cleaning Services

390,990.00

430 Repairs and Maintenance Services

62,469.72

440 Rentals

4,632.20

Total Purchased Property Services

\$458,091.92

600 Supplies

610 General Supplies

14,013.59

37,086.77

51,100.36

Total Supplies

\$14,013.59

\$37,086.77

\$51,100.36

Total 2630 Care and Upkeep of Grounds Services

\$14,013.59

\$37,086.77

\$509,192.28

General Fund (10)

	<u>Elementary</u>	<u>Secondary</u>	<u>Federal</u>	<u>Total</u>
2640 Care and Upkeep of Equipment Services				
400 <u>Purchased Property Services</u>				
430 Repairs and Maintenance Services				30,117.66
Total Purchased Property Services				\$30,117.66
600 <u>Supplies</u>				
610 General Supplies	4,681.57	6,366.72		11,048.29
Total Supplies	\$4,681.57	\$6,366.72		\$11,048.29
Total 2640 Care and Upkeep of Equipment Services	\$4,681.57	\$6,366.72		\$41,165.95

General Fund (10)

	<u>Elementary</u>	<u>Secondary</u>	<u>Federal</u>	<u>Total</u>
2650 Vehicle Operation and Maintenance Services (Other Than Student Transportation Vehicles)				
400 <u>Purchased Property Services</u>				
430 Repairs and Maintenance Services				5,974.26
440 Rentals				734.24
Total Purchased Property Services				\$6,708.50
600 <u>Supplies</u>				
610 General Supplies	817.93	755.02		1,572.95
620 Energy				9,447.25
Total Supplies	\$817.93	\$755.02		\$11,020.20
Total 2650 Vehicle Operation and Maintenance Services (Other Than Student Transportation Vehicles)	\$817.93	\$755.02		\$17,728.70

General Fund (10)

2660 Safety and Security Services

100 Personnel Services – Salaries

100 Personnel Services – Salaries				303,891.64
-----------------------------------	--	--	--	------------

Total Personnel Services – Salaries				\$303,891.64
--	--	--	--	---------------------

200 Personnel Services – Employee Benefits

210 Group Insurance – Contracted Provider				1,058.68
---	--	--	--	----------

220 Social Security Contributions				22,828.22
-----------------------------------	--	--	--	-----------

230 PSERS Retirement Contributions				95,978.09
------------------------------------	--	--	--	-----------

250 Unemployment Compensation				347.95
-------------------------------	--	--	--	--------

260 Workers' Compensation				2,024.52
---------------------------	--	--	--	----------

270 Group Insurance – Self-Insurance				61,156.02
--------------------------------------	--	--	--	-----------

292 Health Savings Accounts				1,675.00
-----------------------------	--	--	--	----------

299 All Other Employee Benefits				977.85
---------------------------------	--	--	--	--------

Total Personnel Services – Employee Benefits				\$186,046.33
---	--	--	--	---------------------

300 Purchased Professional and Technical Services

330 Other Professional Services				11,001.40
---------------------------------	--	--	--	-----------

350 Security / Safety Services				186,610.80
--------------------------------	--	--	--	------------

Total Purchased Professional and Technical Services				\$197,612.20
--	--	--	--	---------------------

400 Purchased Property Services

430 Repairs and Maintenance Services				4,605.91
--------------------------------------	--	--	--	----------

Total Purchased Property Services				\$4,605.91
--	--	--	--	-------------------

500 Other Purchased Services

580 Travel				320.65
------------	--	--	--	--------

Total Other Purchased Services				\$320.65
---------------------------------------	--	--	--	-----------------

600 Supplies

610 General Supplies	1,946.87	2,261.87		4,208.74
----------------------	----------	----------	--	----------

630 Food				86.95
----------	--	--	--	-------

640 Books and Periodicals				179.00
---------------------------	--	--	--	--------

650 Supplies & Fees – Technology Related				5,562.00
--	--	--	--	----------

Total Supplies	\$1,946.87	\$2,261.87		\$10,036.69
-----------------------	-------------------	-------------------	--	--------------------

Total 2660 Safety and Security Services	\$1,946.87	\$2,261.87		\$702,513.42
--	-------------------	-------------------	--	---------------------

General Fund (10)

2700 Student Transportation Services

Elementary Secondary Federal Total

100	<u>Personnel Services – Salaries</u>				
	100 Personnel Services – Salaries				95,134.86
Total Personnel Services – Salaries					\$95,134.86
200	<u>Personnel Services – Employee Benefits</u>				
	210 Group Insurance – Contracted Provider				340.43
	220 Social Security Contributions				7,227.91
	230 PSERS Retirement Contributions				33,241.49
	260 Workers' Compensation				556.74
	270 Group Insurance – Self-Insurance				22,300.14
	292 Health Savings Accounts				975.00
	299 All Other Employee Benefits				1,351.00
Total Personnel Services – Employee Benefits					\$65,992.71
300	<u>Purchased Professional and Technical Services</u>				
	330 Other Professional Services				891.95
Total Purchased Professional and Technical Services					\$891.95
400	<u>Purchased Property Services</u>				
	430 Repairs and Maintenance Services				8,209.70
Total Purchased Property Services					\$8,209.70
500	<u>Other Purchased Services</u>				
	513 Contracted Carriers				3,709,976.10
	516 Student Transportation Services From the IU				181,464.77
	530 Communications				173.82
	580 Travel				697.89
Total Other Purchased Services					\$3,892,312.58
600	<u>Supplies</u>				
	610 General Supplies				5,054.64
	620 Energy				36,044.62
	630 Food				834.84
	650 Supplies & Fees – Technology Related				6,169.98
Total Supplies					\$48,104.08
700	<u>Property</u>				
	790 Other Property				2,034,586.00
Total Property					\$2,034,586.00
800	<u>Other Objects</u>				
	810 Dues and Fees				1,342.50
Total Other Objects					\$1,342.50
Total 2700 Student Transportation Services					\$6,146,574.38

General Fund (10)

2710 Supervision of Student Transportation Services

Elementary Secondary Federal Total

100	<u>Personnel Services – Salaries</u>			
	100 Personnel Services – Salaries			84,674.53
Total Personnel Services – Salaries				\$84,674.53
200	<u>Personnel Services – Employee Benefits</u>			
	210 Group Insurance – Contracted Provider			299.95
	220 Social Security Contributions			6,426.37
	230 PSERS Retirement Contributions			29,586.67
	260 Workers' Compensation			506.13
	270 Group Insurance – Self-Insurance			19,717.02
	292 Health Savings Accounts			862.50
	299 All Other Employee Benefits			1,148.35
Total Personnel Services – Employee Benefits				\$58,546.99
300	<u>Purchased Professional and Technical Services</u>			
	330 Other Professional Services			891.95
Total Purchased Professional and Technical Services				\$891.95
500	<u>Other Purchased Services</u>			
	530 Communications			173.82
	580 Travel			697.89
Total Other Purchased Services				\$871.71
600	<u>Supplies</u>			
	610 General Supplies			596.74
	630 Food			834.84
Total Supplies				\$1,431.58
Total 2710 Supervision of Student Transportation Services				\$146,416.76

General Fund (10)

2711 Supervision of Student Transportation Services – Head of Component

Elementary Secondary Federal Total

100 Personnel Services – Salaries				
100 Personnel Services – Salaries				84,674.53
Total Personnel Services – Salaries				\$84,674.53
200 Personnel Services – Employee Benefits				
210 Group Insurance – Contracted Provider				299.95
220 Social Security Contributions				6,426.37
230 PSERS Retirement Contributions				29,586.67
260 Workers' Compensation				506.13
270 Group Insurance – Self-Insurance				19,717.02
292 Health Savings Accounts				862.50
299 All Other Employee Benefits				1,148.35
Total Personnel Services – Employee Benefits				\$58,546.99
300 Purchased Professional and Technical Services				
330 Other Professional Services				891.95
Total Purchased Professional and Technical Services				\$891.95
500 Other Purchased Services				
530 Communications				173.82
580 Travel				697.89
Total Other Purchased Services				\$871.71
600 Supplies				
610 General Supplies				596.74
630 Food				834.84
Total Supplies				\$1,431.58
Total 2711 Supervision of Student Transportation Services – Head of Component				\$146,416.76

General Fund (10)

2720 Vehicle Operation Services

Elementary

Secondary

Federal

Total

400 Purchased Property Services

430 Repairs and Maintenance Services

1,317.65

Total Purchased Property Services

\$1,317.65

500 Other Purchased Services

513 Contracted Carriers

3,491,796.29

516 Student Transportation Services From the IU

181,464.77

Total Other Purchased Services

\$3,673,261.06

600 Supplies

610 General Supplies

4,457.90

650 Supplies & Fees – Technology Related

6,169.98

Total Supplies

\$10,627.88

700 Property

790 Other Property

2,034,586.00

Total Property

\$2,034,586.00

800 Other Objects

810 Dues and Fees

1,342.50

Total Other Objects

\$1,342.50

Total 2720 Vehicle Operation Services

\$5,721,135.09

General Fund (10)

2740 Vehicle Servicing and Maintenance Services

Elementary

Secondary

Federal

Total

400 Purchased Property Services

430 Repairs and Maintenance Services

6,892.05

Total Purchased Property Services

\$6,892.05

600 Supplies

620 Energy

36,044.62

Total Supplies

\$36,044.62

Total 2740 Vehicle Servicing and Maintenance Services

\$42,936.67

General Fund (10)

	<u>Elementary</u>	<u>Secondary</u>	<u>Federal</u>	<u>Total</u>
2750 Nonpublic Transportation				
100 Personnel Services – Salaries				
100 Personnel Services – Salaries				10,460.33
Total Personnel Services – Salaries				\$10,460.33
200 Personnel Services – Employee Benefits				
210 Group Insurance – Contracted Provider				40.48
220 Social Security Contributions				801.54
230 PSERS Retirement Contributions				3,654.82
260 Workers' Compensation				50.61
270 Group Insurance – Self-Insurance				2,583.12
292 Health Savings Accounts				112.50
299 All Other Employee Benefits				202.65
Total Personnel Services – Employee Benefits				\$7,445.72
500 Other Purchased Services				
513 Contracted Carriers				218,179.81
Total Other Purchased Services				\$218,179.81
Total 2750 Nonpublic Transportation				\$236,085.86

General Fund (10)

	<u>Elementary</u>	<u>Secondary</u>	<u>Federal</u>	<u>Total</u>
2800 Support Services – Central				
100 Personnel Services – Salaries				
100 Personnel Services – Salaries				354,214.35
Total Personnel Services – Salaries				\$354,214.35
200 Personnel Services – Employee Benefits				
210 Group Insurance – Contracted Provider				986.54
220 Social Security Contributions				26,573.03
230 PSERS Retirement Contributions				122,284.26
240 Tuition Reimbursement				23,311.50
260 Workers' Compensation				2,075.14
270 Group Insurance – Self-Insurance				51,828.60
292 Health Savings Accounts				2,062.50
299 All Other Employee Benefits				1,532.98
Total Personnel Services – Employee Benefits				\$230,654.55
300 Purchased Professional and Technical Services				
330 Other Professional Services			7,200.00	7,200.00
360 Employee Training and Development Services			3,540.00	22,864.98
390 Other Purchased Professional and Technical Services			11,624.16	21,633.76
Total Purchased Professional and Technical Services				\$22,364.16
500 Other Purchased Services				
530 Communications				2,355.03
549 Other Advertising/Public Relations				11,993.08
550 Printing and Binding				4,554.73
580 Travel				1,227.19
Total Other Purchased Services				\$20,130.03
600 Supplies				
610 General Supplies				3,773.46
630 Food				6,673.84
650 Supplies & Fees – Technology Related				57,371.97
Total Supplies				\$67,819.27
800 Other Objects				
810 Dues and Fees				1,861.75
Total Other Objects				\$1,861.75
Total 2800 Support Services – Central			\$22,364.16	\$726,378.69

General Fund (10)

2810 Planning, Research, Development and Evaluation Services

Elementary

Secondary

Federal

Total

100 Personnel Services – Salaries

100 Personnel Services – Salaries

20,101.11

Total Personnel Services – Salaries

\$20,101.11

200 Personnel Services – Employee Benefits

210 Group Insurance – Contracted Provider

62.02

220 Social Security Contributions

1,494.76

230 PSERS Retirement Contributions

6,679.40

260 Workers' Compensation

151.84

270 Group Insurance – Self-Insurance

6,639.04

Total Personnel Services – Employee Benefits

\$15,027.06

Total 2810 Planning, Research, Development and Evaluation Services

\$35,128.17

General Fund (10)

	<u>Elementary</u>	<u>Secondary</u>	<u>Federal</u>	<u>Total</u>
2820 Information Services				
100 Personnel Services – Salaries				
100 Personnel Services – Salaries				35,475.00
Total Personnel Services – Salaries				\$35,475.00
200 Personnel Services – Employee Benefits				
210 Group Insurance – Contracted Provider				113.25
220 Social Security Contributions				2,665.37
230 PSERS Retirement Contributions				12,395.00
260 Workers' Compensation				202.45
270 Group Insurance – Self-Insurance				5,888.87
Total Personnel Services – Employee Benefits				\$21,264.94
300 Purchased Professional and Technical Services				
390 Other Purchased Professional and Technical Services				3,600.00
Total Purchased Professional and Technical Services				\$3,600.00
500 Other Purchased Services				
530 Communications				1,824.12
549 Other Advertising/Public Relations				10,643.08
550 Printing and Binding				4,554.73
Total Other Purchased Services				\$17,021.93
600 Supplies				
610 General Supplies				780.18
630 Food				236.93
650 Supplies & Fees – Technology Related				819.40
Total Supplies				\$1,836.51
Total 2820 Information Services				\$79,198.38

General Fund (10)

2821 Supervision of Information Services

Elementary Secondary Federal Total

100	<u>Personnel Services – Salaries</u>			
	100 Personnel Services – Salaries			35,475.00
Total Personnel Services – Salaries				\$35,475.00
200	<u>Personnel Services – Employee Benefits</u>			
	210 Group Insurance – Contracted Provider			113.25
	220 Social Security Contributions			2,665.37
	230 PSERS Retirement Contributions			12,395.00
	260 Workers' Compensation			202.45
	270 Group Insurance – Self-Insurance			5,888.87
Total Personnel Services – Employee Benefits				\$21,264.94
300	<u>Purchased Professional and Technical Services</u>			
	390 Other Purchased Professional and Technical Services			3,600.00
Total Purchased Professional and Technical Services				\$3,600.00
500	<u>Other Purchased Services</u>			
	530 Communications			1,824.12
	549 Other Advertising/Public Relations			10,643.08
	550 Printing and Binding			4,554.73
Total Other Purchased Services				\$17,021.93
600	<u>Supplies</u>			
	610 General Supplies			780.18
	630 Food			236.93
	650 Supplies & Fees – Technology Related			819.40
Total Supplies				\$1,836.51
Total 2821 Supervision of Information Services				\$79,198.38

General Fund (10)

2830 Staff Services

	<u>Elementary</u>	<u>Secondary</u>	<u>Federal</u>	<u>Total</u>
100 Personnel Services – Salaries				
100 Personnel Services – Salaries				298,638.24
Total Personnel Services – Salaries				\$298,638.24
200 Personnel Services – Employee Benefits				
210 Group Insurance – Contracted Provider				811.27
220 Social Security Contributions				22,412.90
230 PSERS Retirement Contributions				103,209.86
240 Tuition Reimbursement				23,311.50
260 Workers' Compensation				1,720.85
270 Group Insurance – Self-Insurance				39,300.69
292 Health Savings Accounts				2,062.50
299 All Other Employee Benefits				1,532.98
Total Personnel Services – Employee Benefits				\$194,362.55
300 Purchased Professional and Technical Services				
330 Other Professional Services			7,200.00	7,200.00
360 Employee Training and Development Services			3,540.00	22,864.98
390 Other Purchased Professional and Technical Services			11,624.16	18,033.76
Total Purchased Professional and Technical Services			\$22,364.16	\$48,098.74
500 Other Purchased Services				
530 Communications				530.91
549 Other Advertising/Public Relations				1,350.00
580 Travel				1,227.19
Total Other Purchased Services				\$3,108.10
600 Supplies				
610 General Supplies				2,993.28
630 Food				6,436.91
650 Supplies & Fees – Technology Related				56,552.57
Total Supplies				\$65,982.76
800 Other Objects				
810 Dues and Fees				1,861.75
Total Other Objects				\$1,861.75
Total 2830 Staff Services			\$22,364.16	\$612,052.14

General Fund (10)

2831 Supervision of Staff Services

Elementary

Secondary

Federal

Total

100 Personnel Services – Salaries

100 Personnel Services – Salaries

157,978.02

Total Personnel Services – Salaries

\$157,978.02

200 Personnel Services – Employee Benefits

210 Group Insurance – Contracted Provider

375.79

220 Social Security Contributions

11,912.99

230 PSERS Retirement Contributions

55,197.43

260 Workers' Compensation

961.65

270 Group Insurance – Self-Insurance

9,923.10

292 Health Savings Accounts

562.50

299 All Other Employee Benefits

1,099.00

Total Personnel Services – Employee Benefits

\$80,032.46

600 Supplies

610 General Supplies

424.00

Total Supplies

\$424.00

Total 2831 Supervision of Staff Services

\$238,434.48

General Fund (10)

2832 Recruitment and Placement Services

Elementary Secondary Federal Total

100	<u>Personnel Services – Salaries</u>			
	100 Personnel Services – Salaries			81,999.67
Total Personnel Services – Salaries				\$81,999.67
200	<u>Personnel Services – Employee Benefits</u>			
	210 Group Insurance – Contracted Provider			298.50
	220 Social Security Contributions			6,069.10
	230 PSERS Retirement Contributions			28,652.49
	260 Workers' Compensation			455.52
	270 Group Insurance – Self-Insurance			22,942.59
	292 Health Savings Accounts			1,125.00
	299 All Other Employee Benefits			433.98
Total Personnel Services – Employee Benefits				\$59,977.18
300	<u>Purchased Professional and Technical Services</u>			
	390 Other Purchased Professional and Technical Services		11,624.16	18,033.76
Total Purchased Professional and Technical Services			\$11,624.16	\$18,033.76
500	<u>Other Purchased Services</u>			
	530 Communications			530.91
	549 Other Advertising/Public Relations			1,350.00
	580 Travel			42.35
Total Other Purchased Services				\$1,923.26
600	<u>Supplies</u>			
	610 General Supplies			2,109.28
	630 Food			290.96
	650 Supplies & Fees – Technology Related			56,552.57
Total Supplies				\$58,952.81
800	<u>Other Objects</u>			
	810 Dues and Fees			1,505.75
Total Other Objects				\$1,505.75
Total 2832 Recruitment and Placement Services			\$11,624.16	\$222,392.43

General Fund (10)

2833 Staff Accounting Services

Elementary

Secondary

Federal

Total

100 Personnel Services – Salaries

100 Personnel Services – Salaries

23,252.39

Total Personnel Services – Salaries

\$23,252.39

200 Personnel Services – Employee Benefits

210 Group Insurance – Contracted Provider

68.54

220 Social Security Contributions

1,750.72

230 PSERS Retirement Contributions

7,556.40

260 Workers' Compensation

151.84

270 Group Insurance – Self-Insurance

3,217.58

292 Health Savings Accounts

187.50

Total Personnel Services – Employee Benefits

\$12,932.58

Total 2833 Staff Accounting Services

\$36,184.97

General Fund (10)

2834 Staff Development Services – Non-Instructional, Certified Staff Only

	<u>Elementary</u>	<u>Secondary</u>	<u>Federal</u>	<u>Total</u>
200 Personnel Services – Employee Benefits				
240 Tuition Reimbursement				23,311.50
Total Personnel Services – Employee Benefits				\$23,311.50
300 Purchased Professional and Technical Services				
330 Other Professional Services			7,200.00	7,200.00
360 Employee Training and Development Services			2,840.00	14,371.98
Total Purchased Professional and Technical Services			\$10,040.00	\$21,571.98
500 Other Purchased Services				
580 Travel				1,119.65
Total Other Purchased Services				\$1,119.65
800 Other Objects				
810 Dues and Fees				356.00
Total Other Objects				\$356.00
Total 2834 Staff Development Services – Non-Instructional, Certified Staff Only			\$10,040.00	\$46,359.13

General Fund (10)

2835 Health Services

100 Personnel Services – Salaries

	<u>Elementary</u>	<u>Secondary</u>	<u>Federal</u>	<u>Total</u>
100 Personnel Services – Salaries				23,252.28
Total Personnel Services – Salaries				\$23,252.28
200 Personnel Services – Employee Benefits				
210 Group Insurance – Contracted Provider				68.44
220 Social Security Contributions				1,750.54
230 PSERS Retirement Contributions				7,556.31
260 Workers' Compensation				151.84
270 Group Insurance – Self-Insurance				3,217.42
292 Health Savings Accounts				187.50
Total Personnel Services – Employee Benefits				\$12,932.05
Total 2835 Health Services				\$36,184.33

General Fund (10)

2836 Staff Development Services – Non-Instructional, Non-Certified Staff Only	<u>Elementary</u>	<u>Secondary</u>	<u>Federal</u>	<u>Total</u>
100 Personnel Services – Salaries				
100 Personnel Services – Salaries				12,155.88
Total Personnel Services – Salaries				\$12,155.88
200 Personnel Services – Employee Benefits				
220 Social Security Contributions				929.55
230 PSERS Retirement Contributions				4,247.23
Total Personnel Services – Employee Benefits				\$5,176.78
300 Purchased Professional and Technical Services				
360 Employee Training and Development Services			700.00	8,493.00
Total Purchased Professional and Technical Services			\$700.00	\$8,493.00
500 Other Purchased Services				
580 Travel				65.19
Total Other Purchased Services				\$65.19
Total 2836 Staff Development Services – Non-Instructional, Non-Certified Staff Only			\$700.00	\$25,890.85

LEA : 113364503 Manheim Township SD

Printed 11/21/2022 11:40:47 AM

General Fund (10)

2839 Other Staff Services

Elementary

Secondary

Federal

Total

600 Supplies

610 General Supplies

460.00

630 Food

6,145.95

Total Supplies				\$6,605.95
Total 2839 Other Staff Services				\$6,605.95

General Fund (10)

2900 Other Support Services

Elementary

Secondary

Federal

Total

500 Other Purchased Services

595 IU Payments By Withholding

53,951.68

Total Other Purchased Services

\$53,951.68

Total 2900 Other Support Services

\$53,951.68

General Fund (10)

2910 Support Services Not Listed Elsewhere In the 2000 Series

Elementary

Secondary

Federal

Total

500 Other Purchased Services

595 IU Payments By Withholding

53,951.68

Total Other Purchased Services

\$53,951.68

Total 2910 Support Services Not Listed Elsewhere In the 2000 Series

\$53,951.68

General Fund (10)

3000 Operation of Non-Instructional Services

Total

100 Personnel Services – Salaries

100 Personnel Services – Salaries 805,826.09

Total Personnel Services – Salaries \$805,826.09

200 Personnel Services – Employee Benefits

210 Group Insurance – Contracted Provider 1,229.42

220 Social Security Contributions 60,677.35

230 PSERS Retirement Contributions 238,799.23

260 Workers’ Compensation 4,555.55

270 Group Insurance – Self-Insurance 21,856.80

292 Health Savings Accounts 1,125.00

299 All Other Employee Benefits 448.00

Total Personnel Services – Employee Benefits \$328,691.35

300 Purchased Professional and Technical Services

330 Other Professional Services 6,307.50

350 Security / Safety Services 9,005.00

390 Other Purchased Professional and Technical Services 145,629.20

Total Purchased Professional and Technical Services \$160,941.70

400 Purchased Property Services

410 Cleaning Services 3,398.75

430 Repairs and Maintenance Services 18,689.23

440 Rentals 7,445.45

Total Purchased Property Services \$29,533.43

500 Other Purchased Services

510 Student Transportation Services 94,733.83

520 Insurance – General 6,700.00

530 Communications 73.46

580 Travel 12,600.35

Total Other Purchased Services \$114,107.64

600 Supplies

610 General Supplies 116,671.66

620 Energy 507.47

630 Food 4,227.68

640 Books and Periodicals 588.50

650 Supplies & Fees – Technology Related 11,270.00

Total Supplies \$133,265.31

800 Other Objects

810 Dues and Fees 26,538.78

890 Miscellaneous Expenditures 837.00

Total Other Objects \$27,375.78

Total 3000 Operation of Non-Instructional Services \$1,599,741.30

General Fund (10)

3200 Student Activities

Elementary Secondary Federal Total

100	<u>Personnel Services – Salaries</u>				
	100 Personnel Services – Salaries				805,826.09
Total Personnel Services – Salaries					\$805,826.09
200	<u>Personnel Services – Employee Benefits</u>				
	210 Group Insurance – Contracted Provider				1,229.42
	220 Social Security Contributions				60,677.35
	230 PSERS Retirement Contributions				238,799.23
	260 Workers' Compensation				4,555.55
	270 Group Insurance – Self-Insurance				21,856.80
	292 Health Savings Accounts				1,125.00
	299 All Other Employee Benefits				448.00
Total Personnel Services – Employee Benefits					\$328,691.35
300	<u>Purchased Professional and Technical Services</u>				
	330 Other Professional Services				6,307.50
	350 Security / Safety Services				9,005.00
	390 Other Purchased Professional and Technical Services				145,629.20
Total Purchased Professional and Technical Services					\$160,941.70
400	<u>Purchased Property Services</u>				
	410 Cleaning Services				3,398.75
	430 Repairs and Maintenance Services				18,689.23
	440 Rentals				7,445.45
Total Purchased Property Services					\$29,533.43
500	<u>Other Purchased Services</u>				
	510 Student Transportation Services				94,733.83
	520 Insurance – General				6,700.00
	530 Communications				73.46
	580 Travel				12,600.35
Total Other Purchased Services					\$114,107.64
600	<u>Supplies</u>				
	610 General Supplies				110,468.42
	620 Energy				507.47
	630 Food				2,841.88
	640 Books and Periodicals				588.50
	650 Supplies & Fees – Technology Related				11,270.00
Total Supplies					\$125,676.27
800	<u>Other Objects</u>				
	810 Dues and Fees				26,538.78
	890 Miscellaneous Expenditures				837.00
Total Other Objects					\$27,375.78
Total 3200 Student Activities					\$1,592,152.26

LEA : 113364503 Manheim Township SD

Printed 11/21/2022 11:40:54 AM

General Fund (10)

3300 Community Services

600 Supplies

610 General Supplies

630 Food

Total Supplies

Total 3300 Community Services

Elementary

Secondary

Federal

Total

6,203.24

6,203.24

1,385.80

1,385.80

\$7,589.04

\$7,589.04

\$7,589.04

\$7,589.04

General Fund (10)

5000 Other Expenditures and Financing Uses

Total

800 Other Objects

830 Interest	3,117,493.20
880 Refunds of Prior Years' Receipts	7,517.96

Total Other Objects	\$3,125,011.16
----------------------------	-----------------------

900 Other Uses of Funds

910 Redemption of Principal	11,158,876.18
932 Capital Reserve Fund Transfers Applicable To Fund 32	3,991,378.00

Total Other Uses of Funds	\$15,150,254.18
----------------------------------	------------------------

Total 5000 Other Expenditures and Financing Uses	\$18,275,265.34
---	------------------------

LEA : 113364503 Manheim Township SD

Printed 11/21/2022 11:41:06 AM

General Fund (10)

5100 Debt Service / Other Expenditures and Financing Uses	<u>Elementary</u>	<u>Secondary</u>	<u>Federal</u>	<u>Total</u>
800 Other Objects				
830 Interest				3,117,493.20
880 Refunds of Prior Years' Receipts				7,517.96
Total Other Objects				\$3,125,011.16
900 Other Uses of Funds				
910 Redemption of Principal				11,158,876.18
Total Other Uses of Funds				\$11,158,876.18
Total 5100 Debt Service / Other Expenditures and Financing Uses				\$14,283,887.34

General Fund (10)

	<u>Elementary</u>	<u>Secondary</u>	<u>Federal</u>	<u>Total</u>
5110 Debt Service				
800 Other Objects				
830 Interest				3,082,624.02
Total Other Objects				\$3,082,624.02
900 Other Uses of Funds				
910 Redemption of Principal				11,091,518.87
Total Other Uses of Funds				\$11,091,518.87
Total 5110 Debt Service				\$14,174,142.89

LEA : 113364503 Manheim Township SD

Printed 11/21/2022 11:41:06 AM

General Fund (10)

	<u>Elementary</u>	<u>Secondary</u>	<u>Federal</u>	<u>Total</u>
5130 Refund of Prior Year Revenues / Receipts				
800 Other Objects				
880 Refunds of Prior Years' Receipts				7,517.96
Total Other Objects				\$7,517.96
Total 5130 Refund of Prior Year Revenues / Receipts				\$7,517.96

LEA : 113364503 Manheim Township SD

Printed 11/21/2022 11:41:06 AM

General Fund (10)

	<u>Elementary</u>	<u>Secondary</u>	<u>Federal</u>	<u>Total</u>
5140 Leases				
800 <u>Other Objects</u>				
830 Interest				34,869.18
Total Other Objects				\$34,869.18
900 <u>Other Uses of Funds</u>				
910 Redemption of Principal				67,357.31
Total Other Uses of Funds				\$67,357.31
Total 5140 Leases				\$102,226.49

General Fund (10)

5200 Interfund Transfers – Out

Elementary

Secondary

Federal

Total

900 Other Uses of Funds

932 Capital Reserve Fund Transfers Applicable To Fund 32

3,991,378.00

Total Other Uses of Funds

\$3,991,378.00

Total 5200 Interfund Transfers – Out

\$3,991,378.00

LEA : 113364503 Manheim Township SD

Printed 11/21/2022 11:41:06 AM

General Fund (10)

5230 Capital Projects Fund Transfers

Elementary

Secondary

Federal

Total

900 Other Uses of Funds

932 Capital Reserve Fund Transfers Applicable To Fund 32

3,991,378.00

Total Other Uses of Funds

\$3,991,378.00

Total 5230 Capital Projects Fund Transfers

\$3,991,378.00

Capital Reserve Fund - § 1431 (32)

4000 Facilities Acquisition, Construction and Improvement Services

Total

300 Purchased Professional and Technical Services

330 Other Professional Services

40,039.57

Total Purchased Professional and Technical Services

\$40,039.57

400 Purchased Property Services

450 Construction Services

2,270,047.41

Total Purchased Property Services

\$2,270,047.41

700 Property

756 Capitalized Technology Equipment – Original

347,063.00

Total Property

\$347,063.00

Total 4000 Facilities Acquisition, Construction and Improvement Services

\$2,657,149.98

LEA : 113364503 Manheim Township SD

Printed 11/21/2022 11:40:59 AM

Capital Reserve Fund - § 1431 (32)

4200 Existing Site Improvement Services

Elementary

Secondary

Federal

Total

400 Purchased Property Services

450 Construction Services

86,350.00

Total Purchased Property Services

\$86,350.00

Total 4200 Existing Site Improvement Services

\$86,350.00

Capital Reserve Fund - § 1431 (32)

4400 Architecture and Engineering Services / Educational Specifications – Improvements

Elementary

Secondary

Federal

Total

300 Purchased Professional and Technical Services

330 Other Professional Services

1,940.00

Total Purchased Professional and Technical Services

\$1,940.00

Total 4400 Architecture and Engineering Services / Educational Specifications – Improvements

\$1,940.00

LEA : 113364503 Manheim Township SD

Printed 11/21/2022 11:40:59 AM

Capital Reserve Fund - § 1431 (32)

4500 Building Acquisition and Construction Services – Original and Additional

Elementary

Secondary

Federal

Total

700 Property

756 Capitalized Technology Equipment – Original

56,652.67

Total Property				\$56,652.67
Total 4500 Building Acquisition and Construction Services – Original and Additional				\$56,652.67

LEA : 113364503 Manheim Township SD

Printed 11/21/2022 11:40:59 AM

Capital Reserve Fund - § 1431 (32)

4600 Existing Building Improvement Services

Elementary

Secondary

Federal

Total

300 Purchased Professional and Technical Services

330 Other Professional Services

38,099.57

Total Purchased Professional and Technical Services

\$38,099.57

400 Purchased Property Services

450 Construction Services

2,183,697.41

Total Purchased Property Services

\$2,183,697.41

700 Property

756 Capitalized Technology Equipment – Original

290,410.33

Total Property

\$290,410.33

Total 4600 Existing Building Improvement Services

\$2,512,207.31

LEA : 113364503 Manheim Township SD

Printed 11/21/2022 11:40:44 AM

Other Capital Projects Fund (39)

1000 Instruction	<u>Total</u>
700 Property	
756 Capitalized Technology Equipment – Original	3,923,546.25
Total Property	\$3,923,546.25
Total 1000 Instruction	\$3,923,546.25

Other Capital Projects Fund (39)

1100 Regular Programs – Elementary / Secondary

700 Property

756 Capitalized Technology Equipment – Original

Total Property

Total 1100 Regular Programs – Elementary / Secondary

Elementary

Secondary

Federal

Total

2,040,244.05

1,883,302.20

3,923,546.25

\$2,040,244.05

\$1,883,302.20

\$3,923,546.25

\$2,040,244.05

\$1,883,302.20

\$3,923,546.25

LEA : 113364503 Manheim Township SD

Printed 11/21/2022 11:40:44 AM

Other Capital Projects Fund (39)

1110 Regular Programs

700 Property

756 Capitalized Technology Equipment – Original

Total Property

Total 1110 Regular Programs

	<u>Elementary</u>	<u>Secondary</u>	<u>Federal</u>	<u>Total</u>
756 Capitalized Technology Equipment – Original	2,040,244.05	1,883,302.20		3,923,546.25
Total Property	\$2,040,244.05	\$1,883,302.20		\$3,923,546.25
Total 1110 Regular Programs	\$2,040,244.05	\$1,883,302.20		\$3,923,546.25

Other Capital Projects Fund (39)

2000 Support Services

800 Other Objects

810 Dues and Fees

229,004.00

Total Other Objects

\$229,004.00

Total 2000 Support Services

\$229,004.00

LEA : 113364503 Manheim Township SD

Printed 11/21/2022 11:40:52 AM

Other Capital Projects Fund (39)

2300 Support Services – Administration

Elementary

Secondary

Federal

Total

800 Other Objects

810 Dues and Fees

229,004.00

Total Other Objects

\$229,004.00

Total 2300 Support Services – Administration

\$229,004.00

LEA : 113364503 Manheim Township SD

Printed 11/21/2022 11:40:52 AM

Other Capital Projects Fund (39)

2390 Other Administration Services

Elementary

Secondary

Federal

Total

800 Other Objects

810 Dues and Fees

229,004.00

Total Other Objects

\$229,004.00

Total 2390 Other Administration Services

\$229,004.00

Other Capital Projects Fund (39)

4000 Facilities Acquisition, Construction and Improvement Services

Total

400 Purchased Property Services

450 Construction Services 9,874,771.76

Total Purchased Property Services \$9,874,771.76

600 Supplies

610 General Supplies 14,137.89

Total Supplies \$14,137.89

700 Property

752 Capital Equipment – Original and Additional 412,825.94

756 Capitalized Technology Equipment – Original 375,884.93

Total Property \$788,710.87

Total 4000 Facilities Acquisition, Construction and Improvement Services \$10,677,620.52

Other Capital Projects Fund (39)

	<u>Elementary</u>	<u>Secondary</u>	<u>Federal</u>	<u>Total</u>
4500 Building Acquisition and Construction Services – Original and Additional				
400 <u>Purchased Property Services</u>				
450 Construction Services				3,306,061.61
Total Purchased Property Services				\$3,306,061.61
600 <u>Supplies</u>				
610 General Supplies				14,137.89
Total Supplies				\$14,137.89
700 <u>Property</u>				
752 Capital Equipment – Original and Additional				412,825.94
756 Capitalized Technology Equipment – Original				375,884.93
Total Property				\$788,710.87
Total 4500 Building Acquisition and Construction Services – Original and Additional				\$4,108,910.37

LEA : 113364503 Manheim Township SD

Printed 11/21/2022 11:41:03 AM

Other Capital Projects Fund (39)

4600 Existing Building Improvement Services

Elementary

Secondary

Federal

Total

400 Purchased Property Services

450 Construction Services

6,568,710.15

Total Purchased Property Services

\$6,568,710.15

Total 4600 Existing Building Improvement Services

\$6,568,710.15

Debt Service Fund (40)

5000 Other Expenditures and Financing Uses

Total

800 Other Objects

830 Interest

12,177.33

Total Other Objects

\$12,177.33

Total 5000 Other Expenditures and Financing Uses

\$12,177.33

LEA : 113364503 Manheim Township SD

Printed 11/21/2022 11:41:10 AM

Debt Service Fund (40)

5100 Debt Service / Other Expenditures and Financing Uses

Elementary

Secondary

Federal

Total

800 Other Objects

830 Interest

12,177.33

Total Other Objects

\$12,177.33

Total 5100 Debt Service / Other Expenditures and Financing Uses

\$12,177.33

LEA : 113364503 Manheim Township SD

Printed 11/21/2022 11:41:10 AM

Debt Service Fund (40)

5110 Debt Service

Elementary

Secondary

Federal

Total

800 Other Objects

830 Interest

12,177.33

Total Other Objects

\$12,177.33

Total 5110 Debt Service

\$12,177.33

	<u>General Fund(10)</u>	<u>Student Sponsored Activity Fund(21)</u>	<u>Public Purpose Trust(27)</u>	<u>Other Compt Approved (28)</u>	<u>Athletic / Activity(29)</u>
1000 Instruction					
1100 Regular Programs - Elementary / Secondary	44,149,659.68				
1200 Special Programs - Elementary / Secondary	11,838,731.46				
1300 Vocational Education	991,466.60				
1400 Other Instructional Programs - Elementary / Secondary	216,244.58				
1500 Nonpublic School Programs	30,672.89				
Total Instruction	\$57,226,775.21				
2000 Support Services					
2100 Support Services - Students	3,908,773.55				
2200 Support Services - Instructional Staff	4,735,308.74				
2300 Support Services - Administration	5,572,444.18				
2400 Support Services - Pupil Health	1,573,321.15				
2500 Support Services - Business	787,985.01				
2600 Operation and Maintenance of Plant Services	8,426,471.34				
2700 Student Transportation Services	6,146,574.38				
2800 Support Services - Central	726,378.69				
2900 Other Support Services	53,951.68				
Total Support Services	\$31,931,208.72				
3000 Operation of Non-Instructional Services					
3200 Student Activities	1,592,152.26				
3300 Community Services	7,589.04				
Total Operation of Non-Instructional Services	\$1,599,741.30				
4000 Facilities Acquisition, Construction and Improvement Services					
4200 Existing Site Improvement Services					
4400 Architecture and Engineering Services / Educational Specifications - Improvements					
4500 Building Acquisition and Construction Services - Original and Additional					
4600 Existing Building Improvement Services					
Total Facilities Acquisition, Construction and Improvement Services					
5000 Other Expenditures and Financing Uses					
5100 Debt Service / Other Expenditures and Financing Uses	14,283,887.34				
5200 Interfund Transfers - Out	3,991,378.00				
Total Other Expenditures and Financing Uses	\$18,275,265.34				
TOTAL ACTUAL EXPENDITURES & OTHER FINANCING USES	\$109,032,990.57				

	<u>Capital Reserve (690. 1850)(31)</u>	<u>Capital Reserve (1431)(32)</u>	<u>Other Capital Projects Fund(39)</u>	<u>Debt Service(40)</u>	<u>Permanent(90)</u>
1000 Instruction					
1100 Regular Programs - Elementary / Secondary			3,923,546.25		
1200 Special Programs - Elementary / Secondary					
1300 Vocational Education					
1400 Other Instructional Programs - Elementary / Secondary					
1500 Nonpublic School Programs					
Total Instruction			\$3,923,546.25		
2000 Support Services					
2100 Support Services - Students					
2200 Support Services - Instructional Staff					
2300 Support Services - Administration			229,004.00		
2400 Support Services - Pupil Health					
2500 Support Services - Business					
2600 Operation and Maintenance of Plant Services					
2700 Student Transportation Services					
2800 Support Services - Central					
2900 Other Support Services					
Total Support Services			\$229,004.00		
3000 Operation of Non-Instructional Services					
3200 Student Activities					
3300 Community Services					
Total Operation of Non-Instructional Services					
4000 Facilities Acquisition, Construction and Improvement Services					
4200 Existing Site Improvement Services	86,350.00				
4400 Architecture and Engineering Services / Educational Specifications - Improvements	1,940.00				
4500 Building Acquisition and Construction Services - Original and Additional	56,652.67		4,108,910.37		
4600 Existing Building Improvement Services	2,512,207.31		6,568,710.15		
Total Facilities Acquisition, Construction and Improvement Services	\$2,657,149.98		\$10,677,620.52		
5000 Other Expenditures and Financing Uses					
5100 Debt Service / Other Expenditures and Financing Uses				12,177.33	
5200 Interfund Transfers - Out					
Total Other Expenditures and Financing Uses				\$12,177.33	
TOTAL ACTUAL EXPENDITURES & OTHER FINANCING USES		\$2,657,149.98	\$14,830,170.77	\$12,177.33	

Total

1000 <u>Instruction</u>	
1100 Regular Programs - Elementary / Secondary	48,073,205.93
1200 Special Programs - Elementary / Secondary	11,838,731.46
1300 Vocational Education	991,466.60
1400 Other Instructional Programs - Elementary / Secondary	216,244.58
1500 Nonpublic School Programs	30,672.89
Total Instruction	\$61,150,321.46
2000 <u>Support Services</u>	
2100 Support Services - Students	3,908,773.55
2200 Support Services - Instructional Staff	4,735,308.74
2300 Support Services - Administration	5,801,448.18
2400 Support Services - Pupil Health	1,573,321.15
2500 Support Services - Business	787,985.01
2600 Operation and Maintenance of Plant Services	8,426,471.34
2700 Student Transportation Services	6,146,574.38
2800 Support Services - Central	726,378.69
2900 Other Support Services	53,951.68
Total Support Services	\$32,160,212.72
3000 <u>Operation of Non-Instructional Services</u>	
3200 Student Activities	1,592,152.26
3300 Community Services	7,589.04
Total Operation of Non-Instructional Services	\$1,599,741.30
4000 <u>Facilities Acquisition, Construction and Improvement Services</u>	
4200 Existing Site Improvement Services	86,350.00
4400 Architecture and Engineering Services / Educational Specifications - Improvements	1,940.00
4500 Building Acquisition and Construction Services - Original and Additional	4,165,563.04
4600 Existing Building Improvement Services	9,080,917.46
Total Facilities Acquisition, Construction and Improvement Services	\$13,334,770.50
5000 <u>Other Expenditures and Financing Uses</u>	
5100 Debt Service / Other Expenditures and Financing Uses	14,296,064.67
5200 Interfund Transfers - Out	3,991,378.00
Total Other Expenditures and Financing Uses	\$18,287,442.67
TOTAL ACTUAL EXPENDITURES & OTHER FINANCING USES	\$126,532,488.65

LEA : 113364503 Manheim Township SD

Printed 11/21/2022 11:41:26 AM

PSERS Salary Data (Salary Data should relate to the General Fund only)

Amount Description	Amount
Total Salary Base for salaries subject to PSERS withholding	42,261,775.35
Total Federally Funded salaries subject to PSERS withholding	2,303,438.40
	<hr/>

Title I Expenditure Data

Amount Description	Amount
Expenditures Funded with Current Title I Funds	627,334.99
Expenditures Funded with Carry over Title I Funds	14,476.95
	<hr/>
Total Title I Expenditure Data	\$641,811.94
	<hr/>

Title IV Revenue Data

Amount Description	Amount
Revenue from Title IV-A-1: Student Support and Academic Enrichment Grants	32,548.00
Revenue from Title IV-B: 21st Century Community Learning Centers	
	<hr/>

Title V Revenue Data

Amount Description	Amount
Revenue from Title V-B-2: Rural and Low-Income School Programs	
Revenue from Title V-B-1: Small Rural School Achievement (Directly from the Federal Govt)	
	<hr/>

1. <u>Current Special Education Expenditures within Function 1000.\r\nSee list of exclusions in the note below.</u>	8,634,749.94
2. <u>Current Special Education Expenditures within Function 2000.\r\nSee list of exclusions in the note below.</u>	2,957,121.81
3. <u>Current Special Education Expenditures within Sub-Function 2100.\r\nThis data should also be included in line 2 above.\r\nSee list of exclusions in the note below.</u>	1,095,159.37
4. <u>Current Special Education Expenditures within Sub-Function 2200.\r\nThis data should also be included in line 2 above.\r\nSee list of exclusions in the note below.</u>	581,238.13
5. <u>Current Special Education Expenditures within Sub-Function 2700.\r\nThis data should also be included in line 2 above.\r\nSee list of exclusions in the note below.</u>	768,531.11
6. <u>Current Special Education Expenditures within Sub-Function 3100.\r\nSee list of exclusions in the note below.</u>	
7. <u>Current Special Education Expenditures within Sub-Function 3200.\r\nSee list of exclusions in the note below.</u>	

Note: The Current Special Education Expenditure amounts for each line should be calculated as follows:

- * Include the total expenditures for special education costs from all funds for the function/sub-function requested
- * Exclude data from sub-functions: 1243,1450,1500,1600,1807,2280,2450,2750,2990
- * Exclude data from objects: 322,511,512,516,561,562,564,566,592,593,594,595,596,597,700,830,899

Benefits for Staff Relative to Collective Bargaining Agreements

	OBJECT	COVERED	NOT COVERED	TOTAL
10 General Fund	No Self Insurance data to report			
	211 Medical Insurance			
	212 Dental Insurance			
	215 Eye Care Insurance	44,147.48	13,941.31	58,088.79
	216 Prescription Insurance			
	271 Self-Insurance Medical Benefits			
	272 Self-Insurance Dental Benefits			
	275 Self-Insurance Eye Care Benefits			
	276 Self-Insurance Prescription Benefits			
	FUND TOTAL		\$44,147.48	\$13,941.31
50 Enterprise Fund	No Self Insurance data to report			
	211 Medical Insurance			
	212 Dental Insurance			
	215 Eye Care Insurance		2,003.05	2,003.05
	216 Prescription Insurance			
	271 Self-Insurance Medical Benefits			
	272 Self-Insurance Dental Benefits			
	275 Self-Insurance Eye Care Benefits			
	276 Self-Insurance Prescription Benefits			
	FUND TOTAL		\$2,003.05	\$2,003.05
60 Internal Service Fund				
	211 Medical Insurance			
	212 Dental Insurance			
	215 Eye Care Insurance			
	216 Prescription Insurance			
	271 Self-Insurance Medical Benefits	4,648,799.94	1,468,042.08	6,116,842.02
	272 Self-Insurance Dental Benefits	294,778.62	93,088.03	387,866.65
	275 Self-Insurance Eye Care Benefits			
	276 Self-Insurance Prescription Benefits	1,518,150.41	479,415.92	1,997,566.33
	FUND TOTAL	\$6,461,728.97	\$2,040,546.03	\$8,502,275.00
Total of All Funds		\$6,505,876.45	\$2,056,490.39	\$8,562,366.84

LEA : 113364503 Manheim Township SD

Printed 11/21/2022 11:41:33 AM

Function	Special Education (Prior Year)	Nonspecial Education (Prior Year)	Total (Prior Year)	Special Education (Current Year)	Nonspecial Education (Current Year)	Total (Current Year)
2120 Guidance Services	331,544.44	2,030,790.71	2,362,335.15	350,062.31	2,042,097.12	2,392,159.43
2140 Psychological Services	655,022.62	163,755.66	818,778.28	713,222.58	178,305.64	891,528.22
2150 Speech Pathology and Audiology Services						
2160 Social Work Services	30,309.06	181,313.13	211,622.19	31,874.48	185,940.55	217,815.03
2260 Instruction and Curriculum Development Services	740,034.43	910,660.15	1,650,694.58	581,238.13	760,042.66	1,341,280.79
2350 Legal and Accounting Services	60,552.75	128,595.61	189,148.36	56,640.84	47,890.23	104,531.07
2420 Medical Services	245,364.06	164,758.81	410,122.87	275,018.06	59,060.40	334,078.46
2440 Nursing Services	149,225.70	892,689.44	1,041,915.14	180,534.30	1,053,151.31	1,233,685.61
2700 Student Transportation Services	667,689.19	3,339,984.14	4,007,673.33	768,531.11	5,378,043.27	6,146,574.38
Total	\$2,879,742.25	\$7,812,547.65	\$10,692,289.90	\$2,957,121.81	\$9,704,531.18	\$12,661,652.99

(PRINCIPAL AMOUNTS ONLY)

GOVERNMENTAL FUNDS/ ACTIVITIES

	Short-Term Borrowing	General Obligation Bonds/Notes	Authority Building Obligations	OLTD, Ext Term Fin, Leases	Other Post-Employment Benefits (OPEB)	Compensated Absences	Net Pension Liability	Total
1. Debt at Beginning of Fiscal Year		124,875,000.00		1,285,716.16	17,421,503.00	592,818.00	140,902,000.00	285,077,037.16
2. Additional Debt Incurred During Year		16,920,000.00		6,222,297.25		1,211,736.00		24,354,033.25
3. Retirements and Repayments		9,405,000.00		1,753,876.18	2,568,290.00	225,070.00	24,178,000.00	38,130,236.18
4. Debt at End of Fiscal Year		132,390,000.00		5,754,137.23	14,853,213.00	1,579,484.00	116,724,000.00	271,300,834.23
5. Accreted Interest at End Of Fiscal Year								
6. Total Debt and Accreted Interest		132,390,000.00		5,754,137.23	14,853,213.00	1,579,484.00	116,724,000.00	271,300,834.23
7. Current Portion P&I - Due within 1 year		12,746,353.00		1,094,871.02				13,841,224.02
8. Interest Paid during current fiscal year		3,088,692.02		40,978.51				3,129,670.53

(PRINCIPAL AMOUNTS ONLY)

PROPRIETARY FUNDS

	Short-Term Borrowing	General Obligation Bonds/Notes	Authority Building Obligations	OLTD, Ext Term Fin, Leases	Other Post-Employment Benefits (OPEB)	Compensated Absences	Net Pension Liability	Total
1. Debt at Beginning of Fiscal Year					182,475.00		2,876,000.00	3,058,475.00
2. Additional Debt Incurred During Year								
3. Retirements and Repayments					4,675.00		494,000.00	498,675.00
4. Debt at End of Fiscal Year					177,800.00		2,382,000.00	2,559,800.00
5. Accreted Interest at End Of Fiscal Year								
6. Total Debt and Accreted Interest					177,800.00		2,382,000.00	2,559,800.00
7. Current Portion P&I - Due within 1 year								
8. Interest Paid during current fiscal year								

Total Principal and Interest Payments Made by Your School - All Funds

Function	Fund		Principal (910)	Principal (920)	Interest (830)	Total (Principal +Interest)	Misc Other Uses (990)
5110	10	General Fund	11,091,518.87		3,082,624.02	14,174,142.89	
5110	20	Special Revenue Funds					
5110	30	Capital Projects Funds					
5110	40	Debt Service Fund			12,177.33	12,177.33	
5110	90	Permanent Fund					
5120	10	General Fund					
5120	20	Special Revenue Funds					
5120	30	Capital Projects Funds					
5120	40	Debt Service Fund					
5140	10	General Fund	67,357.31		34,869.18	102,226.49	
5140	20	Special Revenue Funds					
5140	30	Capital Projects Funds					
5140	40	Debt Service Fund					
5140	90	Permanent Fund					
Total Debt Payments - Governmental Funds			\$11,158,876.18		\$3,129,670.53	\$14,288,546.71	

Function	Fund		Principal (910)	Principal (920)	Interest (830)	Total (Principal +Interest)
5110	50	Enterprise Fund				
5110	60	Internal Service Fund				
5120	50	Enterprise Fund				
5120	60	Internal Service Fund				
5140	50	Enterprise Fund				
5140	60	Internal Service Fund				

Total Debt Payments - Proprietary Funds

Debt Details
Governmental Funds/ Activities

Debt Category	Debt Issue Date (MM/YYYY)	Principal Amounts Only				Current Portion Due Within One Year (Principal and Interest)	Interest Paid During Fiscal Year
		Debt at Beginning of Fiscal Year	Additions	Reductions / Repayments	Debt at End of Fiscal Year		
General Obligation Bonds/Notes – CIB	7/2021		16,920,000.00	5,000.00	16,915,000.00	675,225.00	377,938.07
General Obligation Bonds/Notes – CIB	6/2021	25,645,000.00		7,710,000.00	17,935,000.00	7,145,164.50	104,524.75
General Obligation Bonds/Notes – CIB	6/2021	53,970,000.00		5,000.00	53,965,000.00	1,537,606.00	932,421.70
General Obligation Bonds/Notes – CIB	2/2020	26,840,000.00		5,000.00	26,835,000.00	1,059,350.00	1,054,400.00
General Obligation Bonds/Notes – CIB	4/2019	8,415,000.00		1,115,000.00	7,300,000.00	1,327,207.50	220,657.50
General Obligation Bonds/Notes – CIB	4/2018	10,005,000.00		565,000.00	9,440,000.00	1,001,800.00	398,750.00
Extended Term Financing Agreements		481,025.15	3,923,546.25	1,686,518.87	2,718,052.53	894,293.80	6,109.33
Compensated Absences		592,818.00	1,211,736.00	225,070.00	1,579,484.00		
Other Post-Employment Benefits (OPEB)		17,421,503.00		2,568,290.00	14,853,213.00		
Net Pension Liability		140,902,000.00		24,178,000.00	116,724,000.00		
Leases		804,691.01	2,298,751.00	67,357.31	3,036,084.70	200,577.22	34,869.18
Totals for Debt Entered:		\$285,077,037.16	\$24,354,033.25	\$38,130,236.18	\$271,300,834.23	\$13,841,224.02	\$3,129,670.53

Bond Details
Proprietary Funds

Debt Category	Debt Issue Date (MM/YYYY)	Principal Amounts Only				Current Portion Due Within One Year (Principal and Interest)	Interest Paid During Fiscal Year
		Debt at Beginning of Fiscal Year	Additions	Reductions / Repayments	Debt at End of Fiscal Year		
Other Post-Employment Benefits (OPEB)		182,475.00		4,675.00	177,800.00		
Net Pension Liability		2,876,000.00		494,000.00	2,382,000.00		
Totals for Debt Entered:		\$3,058,475.00		\$498,675.00	\$2,559,800.00		

General Fund (10)

Section 1: Tuition/Purchased Services as Reported within Expenditure Detail

	Amount
Tuition Reported in General Fund Expenditures 1000-560	3,232,046.29
Purchased Services in General Fund Expenditures 1000-594 and 1000-597	
Section 1 Total	\$3,232,046.29

Section 2: Tuition Paid to Institution Types During Fiscal Year

	Tuition Paid For Nonspecial Education	Tuition Paid For Special Education	Total
1 1306 Institutions			
2 Institutionalized Children's Programs			
3 Juveniles Incarcerated in Adult Facilities			
4 Residential Treatment Facilities		16,981.38	16,981.38
5 Other Local Education Agencies	84,393.35	83,159.71	167,553.06
6 Brick and Mortar Charter Schools	12,388.33	22,576.21	34,964.54
7 Cyber Charter Schools	946,646.88	549,478.14	1,496,125.02
8 Career and Technology Centers	991,466.60		991,466.60
9 Approved Private Schools		115,961.35	115,961.35
10 PA Chartered Schools for the Deaf and Blind			
11 Private Residential Rehabilitative Institutions	17,949.45		17,949.45
12 Juvenile Detention Centers			
13 Special Program Jointures	51,460.00		51,460.00
14 Other Tuition Not Included Elsewhere In This Section	66,059.92	273,524.97	339,584.89
Section 2 Total	\$2,170,364.53	\$1,061,681.76	\$3,232,046.29

Food Service / Cafeteria Operations Fund (51)

3000 Operation of Non-Instructional Services

Total

100 Personnel Services – Salaries

100 Personnel Services – Salaries 967,427.95

Total Personnel Services – Salaries \$967,427.95

200 Personnel Services – Employee Benefits

210 Group Insurance – Contracted Provider 2,003.05

220 Social Security Contributions 71,550.38

230 PSERS Retirement Contributions 237,956.89

260 Workers' Compensation 1,012.25

270 Group Insurance – Self-Insurance 269,014.24

280 Other Post-Employment Benefits (OPEB) (24,280.00)

292 Health Savings Accounts 6,584.98

Total Personnel Services – Employee Benefits \$563,841.79

300 Purchased Professional and Technical Services

330 Other Professional Services 685.00

Total Purchased Professional and Technical Services \$685.00

400 Purchased Property Services

430 Repairs and Maintenance Services 45,117.43

440 Rentals 439.40

Total Purchased Property Services \$45,556.83

500 Other Purchased Services

530 Communications 1,130.26

580 Travel 1,645.39

Total Other Purchased Services \$2,775.65

600 Supplies

610 General Supplies 135,576.99

620 Energy 5,172.77

630 Food 1,524,577.98

650 Supplies & Fees – Technology Related 13,580.00

Total Supplies \$1,678,907.74

700 Property

740 Depreciation 93,221.27

Total Property \$93,221.27

800 Other Objects

810 Dues and Fees 2,384.30

Total Other Objects \$2,384.30

Total 3000 Operation of Non-Instructional Services \$3,354,800.53

Food Service / Cafeteria Operations Fund (51)

3100 Food Services

Elementary Secondary Federal Total

100	<u>Personnel Services – Salaries</u>			
	100 Personnel Services – Salaries			967,427.95
Total Personnel Services – Salaries				\$967,427.95
200	<u>Personnel Services – Employee Benefits</u>			
	210 Group Insurance – Contracted Provider			2,003.05
	220 Social Security Contributions			71,550.38
	230 PSERS Retirement Contributions			237,956.89
	260 Workers' Compensation			1,012.25
	270 Group Insurance – Self-Insurance			269,014.24
	280 Other Post-Employment Benefits (OPEB)			(24,280.00)
	292 Health Savings Accounts			6,584.98
Total Personnel Services – Employee Benefits				\$563,841.79
300	<u>Purchased Professional and Technical Services</u>			
	330 Other Professional Services			685.00
Total Purchased Professional and Technical Services				\$685.00
400	<u>Purchased Property Services</u>			
	430 Repairs and Maintenance Services			45,117.43
	440 Rentals			439.40
Total Purchased Property Services				\$45,556.83
500	<u>Other Purchased Services</u>			
	530 Communications			1,130.26
	580 Travel			1,645.39
Total Other Purchased Services				\$2,775.65
600	<u>Supplies</u>			
	610 General Supplies			135,576.99
	620 Energy			5,172.77
	630 Food			1,524,577.98
	650 Supplies & Fees – Technology Related			13,580.00
Total Supplies				\$1,678,907.74
700	<u>Property</u>			
	740 Depreciation			93,221.27
Total Property				\$93,221.27
800	<u>Other Objects</u>			
	810 Dues and Fees			2,384.30
Total Other Objects				\$2,384.30
Total 3100 Food Services				\$3,354,800.53

Internal Service Fund (60)

2000 Support Services

Total

200 Personnel Services – Employee Benefits

270 Group Insurance – Self-Insurance

8,502,275.14

Total Personnel Services – Employee Benefits

\$8,502,275.14

800 Other Objects

810 Dues and Fees

4,524.28

Total Other Objects

\$4,524.28

Total 2000 Support Services

\$8,506,799.42

Internal Service Fund (60)

2800 Support Services – Central

Elementary

Secondary

Federal

Total

200 Personnel Services – Employee Benefits

270 Group Insurance – Self-Insurance

8,502,275.14

Total Personnel Services – Employee Benefits

\$8,502,275.14

800 Other Objects

810 Dues and Fees

4,524.28

Total Other Objects

\$4,524.28

Total 2800 Support Services – Central

\$8,506,799.42

Internal Service Fund (60)

2890 Other Support Services Central

Elementary

Secondary

Federal

Total

200 Personnel Services – Employee Benefits

270 Group Insurance – Self-Insurance

8,502,275.14

Total Personnel Services – Employee Benefits

\$8,502,275.14

800 Other Objects

810 Dues and Fees

4,524.28

Total Other Objects

\$4,524.28

Total 2890 Other Support Services Central

\$8,506,799.42

	<u>Food Service(51)</u>	<u>Child Care Operations(52)</u>	<u>Other Enterprise(58)</u>	<u>Internal Service(60)</u>	<u>Total</u>
2000 <u>Support Services</u>					
2800 Support Services - Central				8,506,799.42	8,506,799.42
Total Support Services				\$8,506,799.42	\$8,506,799.42
3000 <u>Operation of Non-Instructional Services</u>					
3100 Food Services	3,354,800.53				3,354,800.53
Total Operation of Non-Instructional Services	\$3,354,800.53				\$3,354,800.53
TOTAL ACTUAL EXPENDITURES & OTHER FINANCING USES	\$3,354,800.53			\$8,506,799.42	\$11,861,599.95

LEA : 113364503 Manheim Township SD

Printed 11/21/2022 11:42:03 AM

Fund	School	School Number	Local Personnel	Local Nonpersonnel	State Personnel	State Nonpersonnel	Federal Personnel	Federal Nonpersonnel	Total	Explanation
10	Brecht Sch	2619	2,597,590.58	452,415.91	715,240.15	124,571.60	156,668.40	21,750.08	4,068,236.72	
	Bucher Sch	6733	3,651,658.87	638,977.07	1,005,475.26	175,940.76	220,992.75	35,039.78	5,728,084.49	
	Landis Run Intermediate School	8246	7,347,434.12	1,509,360.48	2,023,097.85	415,598.68	408,279.03	87,768.51	11,791,538.67	
	Manheim Twp HS	2623	15,347,921.45	3,680,931.99	4,226,012.30	1,013,535.54	1,073,933.39	162,740.16	25,505,074.83	
	Manheim Twp MS	5114	9,038,326.12	1,683,995.70	2,488,680.79	463,684.06	467,242.37	93,178.53	14,235,107.57	
	Neff Sch	2621	2,789,285.96	503,831.15	768,023.01	138,728.66	202,552.49	25,927.31	4,428,348.58	
	Nitrauer Sch	4708	3,392,277.39	771,692.00	934,055.20	212,483.52	248,359.65	41,196.32	5,600,064.08	
	Reidenbaugh El Sch	7383	3,844,228.53	784,064.21	1,058,498.84	215,890.15	330,665.10	39,569.82	6,272,916.65	
	Schaeffer Sch	2620	2,977,027.61	493,528.06	819,717.20	135,891.73	159,033.71	27,494.23	4,612,692.54	
Total			50,985,750.63	10,518,796.57	14,038,800.60	2,896,324.70	3,267,726.89	534,664.74	82,242,064.13	