

LEA Name : Manheim Township SD
Address : PO Box 5134
Lancaster , PA 17606

County : Lancaster
AUN Number : 113364503
LEA Type : SD

Annual Financial Report Accuracy Certification Statement

For Fiscal Year Ending

6/30/2021

Pennsylvania Department of Education


&

Office of Comptroller Operations

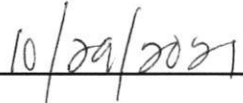
PDE-2056: Intermediate Unit

PDE-2057: School District, AVTS/CTC, Charter School,
and Special Program Jointure

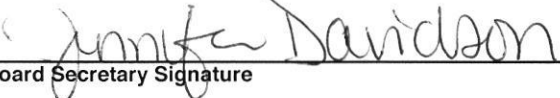
CERTIFICATION: By signing this page I agree that the electronic data submitted is a complete and accurate statement of the financial operations and status of the local education agency for the fiscal year. It has been prepared in accordance with generally accepted accounting principles and established Commonwealth of PA reporting guidelines.



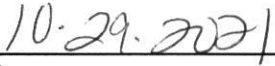
Chief School Administrator Signature



Date



Board Secretary Signature



Date

Steve Brubaker

Contact Person

(717)569-8231 Ext :3113

Contact Person Telephone Number

brubakst@mtwp.net

Contact Person E-mail Address

(717)569-3729

Contact Person Fax Number

Audit Certification
Annual Financial Report:
For Fiscal Year Ending **6/30/2021**
(Pursuant to PA School Code Section 218(b))

LEA Name : Manheim Township SD
AUN Number : 113364503
County : Lancaster

Audit Certification Due: 12/31/2021

This certification is applicable to the Annual Financial Report data submitted through the Consolidated Financial Reporting System (CFRS).

CERTIFICATION: By signing this page I agree that the financial statements of the school have been properly audited as noted above pursuant to Article XXIV, and in the auditor's professional opinion, the Annual Financial Report (PDE-2057) submitted through CFRS is materially consistent with the audited financial statements.

Chief School Administrator



Signature

11/17/2021
Date

Board Secretary



Signature

11/18/21
Date

Steve Brubaker

Contact Person

brubakst@mtwp.net

Contact Person E-mail Address

(717)569-8231

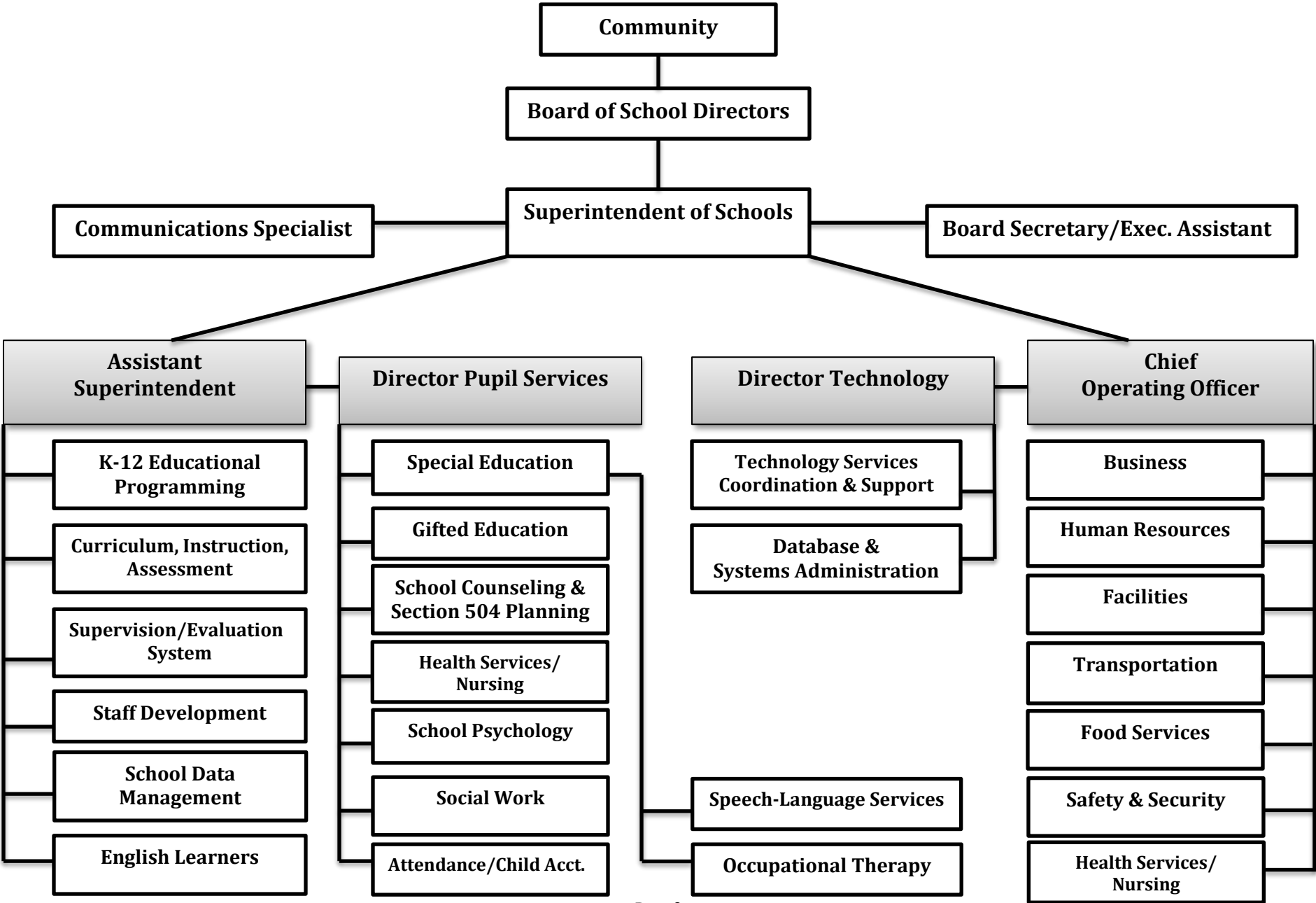
Ext :3113

Contact Person Telephone Number

(717)569-3729

Contact Person Fax Number

MANHEIM TOWNSHIP SCHOOL DISTRICT
Organizational Chart
2020-2021





Book	Policy Manual
Section	600 Finances
Title	GASB Statement 34
Code	622
Status	Active
Adopted	February 20, 2003
Last Revised	August 15, 2019

Purpose

The Board recognizes the need to implement the required accounting and financial reporting standards stipulated by the Pennsylvania Department of Education.

The primary objectives of implementing the Governmental Accounting Standards Board (GASB) Statement 34 are to assure compliance with state requirements, and properly account for both the financial and economic resources of the District.

Authority

Participation of the School District in any such activity shall be in accordance with Board policy. [1][2]

Delegation of Responsibility

The responsibility to coordinate the compilation and preparation of all information necessary to implement this policy is delegated to the Chief Operating Officer or designee.

The designated individual shall be responsible for implementing the necessary procedures to establish and maintain a fixed asset inventory, including depreciation schedules. Depreciation shall be computed on a straight-line basis over the useful lives of the assets, using an averaging convention. Normal maintenance and repairs shall be charged to expense as incurred; major renewals and betterments that materially extend the life or increase the value of the asset shall be capitalized. A schedule of accumulated depreciation shall be consistent from year to year. The basis for depreciation, including groups of assets and useful lives, shall be in writing and submitted for review to the Board.

The Chief Operating Officer or designee shall prepare the required Management Discussion and Analysis (MD&A). The MD&A shall be in the form required by GASB Statement 34 and shall be submitted to the Board for approval, prior to publication.

Prior to submission of the MD&A with the district's annual audit the district's independent auditors shall review the MD&A, in accordance with SAS No. 52, "Required Supplementary Information."

<u>Val Number</u>	<u>Description</u>	<u>Justification</u>
30145	<p>Revenue Detail – Fund 32: Revenue has been entered in account 6991 – Refunds of Prior Year Expenditures. Please provide a description of the refund and verify that the initial expenditure was made from Fund 32.</p> <p>Revenue Detail 6991, Fund 32: \$286,288.00</p>	<p>During 2019-2020, the District paid for a network upgrade out of its capital reserve fund. This project utilized E-Rate funding. During 2020-2021, the District received the E-Rate proceeds related to this project.</p>
41110	<p>Expenditure Detail - There is an entry in function 5110-990 object "Other". Please explain what constitutes "Other". Note: Bond issuance costs and paying agent fees should be coded to 2390-810.</p> <p>Expenditure 5110-990, Fund 39: \$2,043,600.00</p>	<p>The expenditure recorded to 5110-990 represents swap termination fees paid by the District.</p>
41162	<p>Expenditure Detail, Salaries (Object 100) and Benefits (Object 200 series): Amounts must be entered for both Salaries and Benefits.</p> <p>Please verify following fund and function codes: Fund 10 Function 2390;</p>	<p>Function 2390 represents travel insurance coverage for administrators.</p>
42420	<p>Expenditure Detail: Total current year 2700-513 expenditure varies from prior year by 10%. Correct the data or enter a justification.</p> <p>2700-513, AFR Exp Detail: \$3,670,206.80 2700-513, PY AFR Amount: \$2,817,794.07</p>	<p>Due to the COVID-19 state-mandated school closure in 2019-2020, the District paid only a portion of the transportation contract. In 2020-2021, the District incurred a full year of transportation costs.</p>
50160	<p>SOIN: All Governmental Fund General Obligation Bonds must include an amount for Interest Paid during Fiscal Year. Correct data or enter a justification.</p>	<p>Series B of 2021 bonds and Series C of 2021 bonds were issued in June 2021 and had no payments due in 2020-2021.</p>
50450	<p>SESS - 2350 Legal and Accounting Services: SESS Schedule amounts for Special Education vary from prior year by 40% or more. Correct the data or enter a justification.</p> <p>SESS Schedule 2350: \$60,552.75 Prior Year SESS Schedule 2350: \$28,611.16</p>	<p>The District incurred more legal fees related to special education cases in 2020-2021 than in the prior year</p>

Amounts Expressed in Whole Dollars	<u>General Fund</u> <u>(10)</u>	<u>Student Sponsored</u> <u>Activity Fund</u> <u>(21)</u>	<u>Public Purpose Trust</u> <u>(27)</u>	<u>Other Compt Approved</u> <u>(28)</u>	<u>Athletic / Activity</u> <u>(29)</u>
Assets And Deferred Outflows Of Resources					
Assets					
0100 Cash and Cash Equivalents	20,878,681				
0110 Investments	2,002,441				
0120 Taxes Receivable	942,152				
0130 Due From Other Funds	13,757				
0141 Due From Other Governments	2,249,997				
0142 State Revenue Receivable	3,356,311				
0143 Federal Revenue Receivable	82,065				
0145 Other Intergovernmental Revenue Receivable					
0146 Due from Primary Government					
0147 Due from Component Unit					
0150 Other Receivables	328,285				
0170 Inventories	5,749				
0180 Prepaid Expenses (Expenditures)	33,844				
0190 Other Current Assets					
Total Assets	\$29,893,282				
0910 Deferred Outflows of Resources					
Total Assets And Deferred Outflows Of Resources	\$29,893,282				

Amounts Expressed in Whole Dollars

	<u>Capital Reserve (690.</u> <u>1850)</u> <u>(31)</u>	<u>Capital Reserve (1431)</u> <u>(32)</u>	<u>Other Capital Projects</u> <u>Fund</u> <u>(39)</u>	<u>Debt Service</u> <u>(40)</u>	<u>Permanent</u> <u>(90)</u>
Assets And Deferred Outflows Of Resources					
Assets					
0100 Cash and Cash Equivalents		4,903,678	10,732,663	12,177	
0110 Investments					
0120 Taxes Receivable					
0130 Due From Other Funds		2,043,583			
0141 Due From Other Governments					
0142 State Revenue Receivable					
0143 Federal Revenue Receivable					
0145 Other Intergovernmental Revenue Receivable					
0146 Due from Primary Government					
0147 Due from Component Unit					
0150 Other Receivables		24,862			
0170 Inventories					
0180 Prepaid Expenses (Expenditures)					
0190 Other Current Assets					
Total Assets		\$6,972,123	\$10,732,663	\$12,177	
0910 Deferred Outflows of Resources					
Total Assets And Deferred Outflows Of Resources		\$6,972,123	\$10,732,663	\$12,177	

Amounts Expressed in Whole Dollars

Total Governmental Funds

Assets And Deferred Outflows Of Resources

Assets	
0100 Cash and Cash Equivalents	36,527,199
0110 Investments	2,002,441
0120 Taxes Receivable	942,152
0130 Due From Other Funds	2,057,340
0141 Due From Other Governments	2,249,997
0142 State Revenue Receivable	3,356,311
0143 Federal Revenue Receivable	82,065
0145 Other Intergovernmental Revenue Receivable	
0146 Due from Primary Government	
0147 Due from Component Unit	
0150 Other Receivables	353,147
0170 Inventories	5,749
0180 Prepaid Expenses (Expenditures)	33,844
0190 Other Current Assets	
Total Assets	\$47,610,245
0910 Deferred Outflows of Resources	
Total Assets And Deferred Outflows Of Resources	\$47,610,245

Amounts Expressed in Whole Dollars

<u>General Fund</u> <u>(10)</u>	<u>Student Sponsored</u> <u>Activity Fund</u> <u>(21)</u>	<u>Public Purpose Trust</u> <u>(27)</u>	<u>Other Compt Approved</u> <u>(28)</u>	<u>Athletic / Activity</u> <u>(29)</u>
------------------------------------	-----------------------------------------------------------------	--------------------------------------------	--------------------------------------------	-------------------------------------------

Liabilities And Deferred Inflows Of Resources And Fund Balances

Liabilities

0400 Due to Other Funds	1,081,012
0411 Due to Other Governments	260,355
0412 Due to Primary Government	
0413 Due to Component Unit	
0420 Accounts Payable	656,541
0430 Contracts Payable	
0440 Current Portion of Long-Term Debt	
0450 Short-Term Payables	
0461 Accrued Salaries and Benefits	10,386,320
0462 Payroll Deductions and Withholding	398,066
0480 Unearned Revenues	38,119
0490 Other Current Liabilities	75,069

Total Liabilities **\$12,895,482**

0950 Deferred Inflows of Resources	801,154
------------------------------------	---------

Fund Balances

0810 Nonspendable Fund Balance	39,593
0820 Restricted Fund Balance	
0830 Committed Fund Balance	7,044,571
0840 Assigned Fund Balance	840,119
0850 Unassigned Fund Balance	8,272,363

Total Fund Balances **\$16,196,646**

Total Liabilities, Deferred Inflows Of Resources And Fund Balances **\$29,893,282**

Amounts Expressed in Whole Dollars

	<u>Capital Reserve (690.</u> <u>1850)</u> <u>(31)</u>	<u>Capital Reserve (1431)</u> <u>(32)</u>	<u>Other Capital Projects</u> <u>Fund</u> <u>(39)</u>	<u>Debt Service</u> <u>(40)</u>	<u>Permanent</u> <u>(90)</u>
Liabilities And Deferred Inflows Of Resources And Fund Balances					
Liabilities					
0400 Due to Other Funds			2,043,583		
0411 Due to Other Governments					
0412 Due to Primary Government					
0413 Due to Component Unit					
0420 Accounts Payable		441,043	3,266,429		
0430 Contracts Payable					
0440 Current Portion of Long-Term Debt					
0450 Short-Term Payables					
0461 Accrued Salaries and Benefits					
0462 Payroll Deductions and Withholding					
0480 Unearned Revenues					
0490 Other Current Liabilities					
Total Liabilities		\$441,043	\$5,310,012		
0950 Deferred Inflows of Resources					
Fund Balances					
0810 Nonspendable Fund Balance					
0820 Restricted Fund Balance		6,531,080	5,422,651		
0830 Committed Fund Balance					
0840 Assigned Fund Balance				12,177	
0850 Unassigned Fund Balance					
Total Fund Balances		\$6,531,080	\$5,422,651	\$12,177	
Total Liabilities, Deferred Inflows Of Resources And Fund Balances		\$6,972,123	\$10,732,663	\$12,177	

Amounts Expressed in Whole Dollars

Total Governmental Funds

Liabilities And Deferred Inflows Of Resources And Fund Balances

Liabilities

0400 Due to Other Funds	3,124,595
0411 Due to Other Governments	260,355
0412 Due to Primary Government	
0413 Due to Component Unit	
0420 Accounts Payable	4,364,013
0430 Contracts Payable	
0440 Current Portion of Long-Term Debt	
0450 Short-Term Payables	
0461 Accrued Salaries and Benefits	10,386,320
0462 Payroll Deductions and Withholding	398,066
0480 Unearned Revenues	38,119
0490 Other Current Liabilities	75,069

Total Liabilities \$18,646,537

0950 Deferred Inflows of Resources	801,154
------------------------------------	---------

Fund Balances

0810 Nonspendable Fund Balance	39,593
0820 Restricted Fund Balance	11,953,731
0830 Committed Fund Balance	7,044,571
0840 Assigned Fund Balance	852,296
0850 Unassigned Fund Balance	8,272,363

Total Fund Balances \$28,162,554

Total Liabilities, Deferred Inflows Of Resources And Fund Balances \$47,610,245

Amounts Expressed in Whole Dollars	<u>General Fund</u> <u>(10)</u>	<u>Student Sponsored</u> <u>Activity Fund</u> <u>(21)</u>	<u>Public Purpose Trust</u> <u>(27)</u>	<u>Other Compt Approved</u> <u>(28)</u>	<u>Athletic / Activity</u> <u>(29)</u>
Revenues					
6000 Revenue from Local Sources	81,306,244				
7000 Revenue from State Sources	21,038,530				
8000 Revenue from Federal Sources	1,665,474				
Total Revenues	\$104,010,248				
Expenditures					
1000 Instruction	56,979,052				
2000 Support Services	29,997,707				
3000 Operation of Non-Instructional Services	1,437,067				
4000 Facilities Acquisition, Construction and Improvement Services	65,956				
5110 Debt Service	14,628,038				
5130 Refund of Prior Year Revenues / Receipts	3,104				
Total Expenditures	\$103,110,924				
Excess (Deficiency) Of Revenues Over Expenditures	\$899,324				
Other Financing Sources (Uses)					
9110 Face Value of Bonds Issued					
9120 Proceeds from Refunding of Bonds					
9130 Bond Premiums					
9200 Proceeds from Extended-Term Financing	645,394				
9300 Interfund Transfers - IN					
9400 Sale of or Compensation for Loss of Fixed Assets	94,422				
9710 Transfers from Component Units					
9720 Transfers from Primary Governments					
9910 Other Financing Sources Not Listed in the 9000 Series					
9990 Insurance Recoveries	78,073				
5120 Debt Service – Refunded Bonds					
5150 Bond Discounts					
5200 Interfund Transfers – Out	503,450				
5300 Transfers Out to Component Units/Primary Governments					
Total Other Financing Sources (Uses)	\$314,439				

Amounts Expressed in Whole Dollars	<u>Capital Reserve (690, 1850 (31)</u>	<u>Capital Reserve (1431) (32)</u>	<u>Other Capital Projects Fund (39)</u>	<u>Debt Service (40)</u>	<u>Permanent (90)</u>
Revenues					
6000 Revenue from Local Sources		287,296	5,804		
7000 Revenue from State Sources					
8000 Revenue from Federal Sources					
Total Revenues		\$287,296	\$5,804		
Expenditures					
1000 Instruction					
2000 Support Services				601,000	
3000 Operation of Non-Instructional Services					
4000 Facilities Acquisition, Construction and Improvement Services		2,026,606	19,287,082		
5110 Debt Service			2,043,600		
5130 Refund of Prior Year Revenues / Receipts					
Total Expenditures		\$2,026,606	\$21,330,682	\$601,000	
Excess (Deficiency) Of Revenues Over Expenditures		(\$1,739,310)	(\$21,324,878)	(\$601,000)	
Other Financing Sources (Uses)					
9110 Face Value of Bonds Issued					
9120 Proceeds from Refunding of Bonds				79,615,000	
9130 Bond Premiums					
9200 Proceeds from Extended-Term Financing					
9300 Interfund Transfers - IN		503,450			
9400 Sale of or Compensation for Loss of Fixed Assets					
9710 Transfers from Component Units					
9720 Transfers from Primary Governments					
9910 Other Financing Sources Not Listed in the 9000 Series					
9990 Insurance Recoveries					
5120 Debt Service – Refunded Bonds				79,001,823	
5150 Bond Discounts					
5200 Interfund Transfers – Out					
5300 Transfers Out to Component Units/Primary Governments					
Total Other Financing Sources (Uses)		\$503,450		\$613,177	

Amounts Expressed in Whole Dollars	<u>Total Governmental Funds</u>
Revenues	
6000 Revenue from Local Sources	81,599,344
7000 Revenue from State Sources	21,038,530
8000 Revenue from Federal Sources	1,665,474
Total Revenues	\$104,303,348
Expenditures	
1000 Instruction	56,979,052
2000 Support Services	30,598,707
3000 Operation of Non-Instructional Services	1,437,067
4000 Facilities Acquisition, Construction and Improvement Services	21,379,644
5110 Debt Service	16,671,638
5130 Refund of Prior Year Revenues / Receipts	3,104
Total Expenditures	\$127,069,212
Excess (Deficiency) Of Revenues Over Expenditures	(\$22,765,864)
Other Financing Sources (Uses)	
9110 Face Value of Bonds Issued	
9120 Proceeds from Refunding of Bonds	79,615,000
9130 Bond Premiums	
9200 Proceeds from Extended-Term Financing	645,394
9300 Interfund Transfers - IN	503,450
9400 Sale of or Compensation for Loss of Fixed Assets	94,422
9710 Transfers from Component Units	
9720 Transfers from Primary Governments	
9910 Other Financing Sources Not Listed in the 9000 Series	
9990 Insurance Recoveries	78,073
5120 Debt Service – Refunded Bonds	79,001,823
5150 Bond Discounts	
5200 Interfund Transfers – Out	503,450
5300 Transfers Out to Component Units/Primary Governments	
Total Other Financing Sources (Uses)	\$1,431,066

Amounts Expressed in Whole Dollars	<u>General Fund</u> <u>(10)</u>	<u>Student Sponsored</u> <u>Activity Fund</u> <u>(21)</u>	<u>Public Purpose Trust</u> <u>(27)</u>	<u>Other Compt Approved</u> <u>(28)</u>	<u>Athletic / Activity</u> <u>(29)</u>
Special And Extraordinary Items					
9920 Special Items – Gains					
9930 Extraordinary Items – Gains					
5520 Special Items – Losses					
5530 Extraordinary Items – Losses					
Net Change In Fund Balances	\$1,213,763				
Fund Balance					
0001 Fund Balance - Beginning of Fiscal Year	14,982,883				
Fund Balance - End Of Year	\$16,196,646				

Amounts Expressed in Whole Dollars	<u>Capital Reserve (690.1850)</u> <u>(31)</u>	<u>Capital Reserve (1431)</u> <u>(32)</u>	<u>Other Capital Projects</u> <u>Fund</u> <u>(39)</u>	<u>Debt Service</u> <u>(40)</u>	<u>Permanent</u> <u>(90)</u>
Special And Extraordinary Items					
9920 Special Items – Gains					
9930 Extraordinary Items – Gains					
5520 Special Items – Losses					
5530 Extraordinary Items – Losses					
Net Change In Fund Balances		(\$1,235,860)	(\$21,324,878)	\$12,177	
Fund Balance					
0001 Fund Balance - Beginning of Fiscal Year		7,766,940	26,747,529		
Fund Balance - End Of Year		\$6,531,080	\$5,422,651	\$12,177	

Amounts Expressed in Whole Dollars	<u>Total Governmental Funds</u>
Special And Extraordinary Items	
9920 Special Items – Gains	
9930 Extraordinary Items – Gains	
5520 Special Items – Losses	
5530 Extraordinary Items – Losses	
Net Change In Fund Balances	(\$21,334,798)
Fund Balance	
0001 Fund Balance - Beginning of Fiscal Year	49,497,352
Fund Balance - End Of Year	\$28,162,554

Amounts Expressed in Whole Dollars

	<u>Food Service</u> <u>(51)</u>	<u>Child Care</u> <u>Operations</u> <u>(52)</u>	<u>Other Enterprise</u> <u>(58)</u>	<u>TOTAL</u>	<u>Internal Service</u> <u>(60)</u>
Assets And Deferred Outflows Of Resources					
Current Assets					
0100 Cash and Cash Equivalents	1,066,025			1,066,025	461,339
0110 Investments					
0130 Due From Other Funds					1,080,940
0141 Due From Other Governments	1,248			1,248	16,978
0142 State Revenue Receivable	4,415			4,415	
0143 Federal Revenue Receivable	73,029			73,029	
0146 Due from Primary Government					
0147 Due from Component Unit					
0150 Other Receivables	441			441	24,839
0170 Inventories	52,712			52,712	
0180 Prepaid Expenses (Expenditures)					53,964
0190 Other Current Assets					
Total Current Assets	\$1,197,870			\$1,197,870	\$1,638,060
Noncurrent Assets					
0211 Land					
0212 Site Improvements (Net)					
0220 Buildings and Building Improvements (Net)					
0230 Machinery, Equipment and Furniture (Net)	341,746			341,746	
0250 Construction in Progress					
0260 Long Term Prepayments					
0290 Other Noncurrent Assets					
Total Noncurrent Assets	\$341,746			\$341,746	
0910 Deferred Outflows of Resources	505,895			505,895	
Total Assets And Deferred Outflows Of Resources	\$2,045,511			\$2,045,511	\$1,638,060

Amounts Expressed in Whole Dollars	<u>Food Service</u> <u>(51)</u>	<u>Child Care</u> <u>Operations</u> <u>(52)</u>	<u>Other Enterprise</u> <u>(58)</u>	<u>TOTAL</u>	<u>Internal Service</u> <u>(60)</u>
Liabilities And Deferred Inflows Of Resources And Net Position					
Current Liabilities					
0400 Due to Other Funds	13,757			13,757	
0411 Due to Other Governments					
0413 Due to Component Unit					
0420 Accounts Payable	23,226			23,226	654,516
0430 Contracts Payable					
0440 Current Portion of Long-Term Debt					
0450 Short-Term Payables					
0461 Accrued Salaries and Benefits	44,985			44,985	
0462 Payroll Deductions and Withholding					
0480 Unearned Revenues	91,391			91,391	12,778
0490 Other Current Liabilities	86			86	
Total Current Liabilities	\$173,445			\$173,445	\$667,294
Noncurrent Liabilities					
0510 Bonds Payable					
0520 Extended-Term Financing Agreements Payable					
0530 Lease-Purchase Obligations					
0540 Accumulated Compensated Absences					
0550 Authority Lease Obligations					
0560 Other Post-Employment Benefits (OPEB)	182,475			182,475	
0570 Net Pension Liability	2,876,000			2,876,000	
0599 Other Noncurrent Liabilities					
Total Noncurrent Liabilities	\$3,058,475			\$3,058,475	
Total Liabilities	\$3,231,920			\$3,231,920	\$667,294
0950 Deferred Inflows of Resources	149,711			149,711	
Net Position					
0791 Net Investment in Capital Assets	341,746			341,746	
0008 Restricted Net Position (0792 – 0798)					
0799 Unrestricted Net Position	(1,677,866)			(1,677,866)	970,766
Total Net Position	(\$1,336,120)			(\$1,336,120)	\$970,766
Total Liabilities And Deferred Inflows Of Resources And Net Position	\$2,045,511			\$2,045,511	\$1,638,060

Amounts Expressed in Whole Dollars	<u>Food Service</u> <u>(51)</u>	<u>Child Care Operations</u> <u>(52)</u>	<u>Other Enterprise</u> <u>(58)</u>	<u>TOTAL</u>	<u>Internal Service</u> <u>(60)</u>
Operating Revenues					
6600 Food Service Revenue	69,812			69,812	
0071 Charges for Services	25,280			25,280	9,133,859
0072 Other Operating Revenue					
Total Operating Revenues	\$95,092			\$95,092	\$9,133,859
Operating Expenses					
100 Personnel Services – Salaries	850,159			850,159	
200 Personnel Services – Employee Benefits	729,302			729,302	8,848,074
300 Purchased Professional and Technical Services	5,922			5,922	
400 Purchased Property Services	30,604			30,604	
500 Other Purchased Services	4,888			4,888	
600 Supplies	1,071,511			1,071,511	
740 Depreciation	97,373			97,373	
810 Dues and Fees	2,198			2,198	4,342
880 Refunds of Prior Years' Receipts					
890 Miscellaneous Expenditures					
Total Operating Expenses	\$2,791,957			\$2,791,957	\$8,852,416
Operating Income (Loss)	(\$2,696,865)			(\$2,696,865)	\$281,443
Non Operating Revenues (Expenses)					
6500 Earnings on Investments	1,008			1,008	1,861
6920 Contributions and Donations from Private Sources	20,922			20,922	
6930 Gains or Losses on Sale of Fixed Assets					
6991 Refunds of a Prior Year Expenditure					
7000 Revenue from State Sources	179,204			179,204	
8000 Revenue from Federal Sources	2,014,145			2,014,145	
9990 Insurance Recoveries					
820 Claims and Judgments Against the LEA					
830 Interest					
TOTAL Non Operating Revenues (Expenses)	\$2,215,279			\$2,215,279	\$1,861
Income (Loss) Before Contributions And Transfers	(\$481,586)			(\$481,586)	\$283,304

Amounts Expressed in Whole Dollars	<u>Food Service</u> <u>(51)</u>	<u>Child Care Operations</u> <u>(52)</u>	<u>Other Enterprise</u> <u>(58)</u>	<u>TOTAL</u>	<u>Internal Service</u> <u>(60)</u>
Contributions, Transfers, and Special and Extraordinary Items					
5200 Interfund Transfers – Out					
5300 Transfers Out to Component Units/Primary Governments					
5520 Special Items – Losses					
5530 Extraordinary Items – Losses					
9300 Interfund Transfers - IN					
9500 Capital Contributions					
9700 Transfers IN From Component Units/Primary Governments					
9920 Special Items – Gains					
9930 Extraordinary Items – Gains					
Change In Net Position	(\$481,586)			(\$481,586)	\$283,304
0002 Net Position - Beginning of Fiscal Year	(854,534)			(854,534)	687,462
0003 Accounting Changes / Residual Equity Transfers					
Net Position - End Of Year	(\$1,336,120)			(\$1,336,120)	\$970,766

Amounts Expressed in Whole Dollars	<u>Food Service</u> <u>(51)</u>	<u>Child Care Operations</u> <u>(52)</u>	<u>Other Enterprise</u> <u>(58)</u>	<u>TOTAL</u>	<u>Internal Service(60)</u>
Cash Flows From Operating Activities					
0011 Cash Receipts From Users	67,791			67,791	
0012 Cash Receipts From Assessments Made to Other Funds					9,457,547
0013 Cash Receipts From Earnings on Investments					
0014 Cash Receipts From Other Operating Revenue	25,280			25,280	
0015 Cash Payments To Employees For Services	1,510,563			1,510,563	
0016 Cash Payments For Insurance Claims					8,995,128
0017 Cash Payments To Suppliers For Goods and Services	851,137			851,137	4,342
0018 Cash Payments For Other Operating Expenses					
Net Cash Provided By (Used For) Operating Activities	(\$2,268,629)			(\$2,268,629)	\$458,077
Cash Flows From Non-Capital Financing Activities					
0021 Receipts From Local Sources - 6000	19,674			19,674	
0022 Receipts From State Sources - 7000	177,642			177,642	
0023 Receipts From Federal Sources -8000	1,849,153			1,849,153	
0024 Notes and Loans Received (Repaid)					
0025 Interest Paid on Notes/Loans - 5100-830					
0026 Operating Transfers In (Out)/Residual Equity Trans					
0027 Operating Transfers In (Out) Primary Government / Comp Unit					
0028 Receipts From Refund of Prior Year Expenditures - 6991					
0029 Special and Extraordinary Gains (losses)					
0030 Receipts from Insurance Recoveries -9990					
Net Cash Prov By (Used for) Non-Capital Financing Activities	\$2,046,469			\$2,046,469	
Cash Flows From Capital and Related Financing Activities					
0031 Payments For Fac Acq, Const, and Imp - 4000					
0032 Gain / (Loss) on Sale of Fixed Assets - 6930					
0033 Proceeds From Extended Term Financing - 9200					
0034 Principal Paid on Financing Agreements					
0035 Interest Paid on Financing Agreements - 5100-830					
0036 (Inc) Dec in Contributed Capital					
Net Cash Prov By (Used for) Capital and Related Financing Activities					
Cash Flows From Investing Activities					
0041 Earnings on Investments - 6500	1,008			1,008	1,861
0042 Purchase of Inv Securities / Deposits to Inv Pools					
0043 Receipts From Investment Pool Withdrawals					
0044 Proceeds from Sale and Maturity of Inv Securities					

LEA : 113364503 Manheim Township SD

Printed 10/29/2021 8:07:22 AM

0045 Loans Received (Paid)

Net Cash Prov By (Used for) Investing Activities	\$1,008	\$1,008	\$1,861
---------------------------------------------------------	----------------	----------------	----------------

	<u>Food Service</u> <u>(51)</u>	<u>Child Care Operations</u> <u>(52)</u>	<u>Other Enterprise</u> <u>(58)</u>	<u>TOTAL</u>	<u>Internal Service</u> <u>(60)</u>
Net Increase (Decrease) in Cash Flows	(221,152)			(221,152)	459,938
0004 Cash and Cash Equivalents Beginning of Year	1,287,177			1,287,177	1,401
Cash and Cash Equivalents at Year End	\$1,066,025			\$1,066,025	\$461,339
Reconciliation of Operating Income (Loss) To Net Cash Provided by (Used For) Operating Activities					
0005 Operating Income (Loss) per REP	(2,696,865)			(2,696,865)	281,443
Adjustments					
0051 Depreciation and Net Amortization	97,373			97,373	
0052 Provision for Uncollectible Accounts					
0053 Other Adjustments	152,905			152,905	
Effect of Changes in Assets, Liabilities, Deferred Outflows and Deferred Inflows					
0054 (Inc) Dec In Accounts Receivable (0120-0150)	80,341			80,341	148,147
0055 Advances to Other Funds (0160)					
0056 (Inc) Dec in Inventories (0170)	21,257			21,257	
0057 (Inc) Dec in Prepaid Expenses (0180)					1,873
0058 (Inc) Dec in Other Current or Noncurrent Assets					
0064 Deferred Outflows (0910)	(49,315)			(49,315)	
0059 Inc (Dec) in Accounts Payable (0400-0450)	10,336			10,336	51,991
0060 Inc (Dec) in Accrued Salaries/Benefits (0461)	8,951			8,951	
0065 Inc (Dec) in Net Pension Liabilities (0570)	162,000			162,000	
0066 Inc (Dec) in Other Postemp Benefit Oblig (0560)	1,703			1,703	
0061 Inc (Dec) in Payroll Deductions/Withholding (0462)					
0062 Inc (Dec) in Unearned Revenue (0480)	(2,960)			(2,960)	(25,377)
0063 Inc (Dec) in Other Current or Noncurrent Liabilities	86			86	
0067 Deferred Inflows (0950)	(54,441)			(54,441)	
Total Adjustments	\$428,236			\$428,236	\$176,634
Cash Provided By (Used for) Total	(\$2,268,629)			(\$2,268,629)	\$458,077

COMBINED STATEMENT OF CASH FLOWS
SCHEDULE OF NONCASH INVESTING, CAPITAL, AND FINANCING ACTIVITIES

Explanation of Transaction and Balance Sheet Effect	Amount
Total	

LEA : 113364503 Manheim Township SD

Printed 10/29/2021 8:07:25 AM

Amounts Expressed in Whole Dollars

	<u>Private Purpose Trust</u> <u>(71)</u>	<u>Investment Trust</u> <u>(72)</u>	<u>Pension Trust</u> <u>(73)</u>	<u>Student Activity Custodial</u> <u>(81)</u>
Assets And Deferred Outflows Of Resources				
Assets				
0100 Cash and Cash Equivalents	180,168			158,317
0110 Investments	8,600			
0130 Due From Other Funds				72
0140 Due from Other Governments, Primary Government and Component Units				
0150 Other Receivables				
0170 Inventories				
0180 Prepaid Expenses (Expenditures)				
0190 Other Current Assets				
0220 Buildings and Building Improvements (Net)				
0230 Machinery, Equipment and Furniture (Net)				
Total Assets	\$188,768			\$158,389
0910 Deferred Outflows of Resources				
Total Assets And Deferred Outflows Of Resources	\$188,768			\$158,389

LEA : 113364503 Manheim Township SD

Printed 10/29/2021 8:07:25 AM

Amounts Expressed in Whole Dollars	<u>Other Custodial</u> <u>(89)</u>	<u>Fiduciary Component Units</u> <u>(98)</u>	<u>Total Fiduciary Funds</u>
Assets And Deferred Outflows Of Resources			
Assets			
0100 Cash and Cash Equivalents			338,485
0110 Investments			8,600
0130 Due From Other Funds			72
0140 Due from Other Governments, Primary Government and Component Units			
0150 Other Receivables			
0170 Inventories			
0180 Prepaid Expenses (Expenditures)			
0190 Other Current Assets			
0220 Buildings and Building Improvements (Net)			
0230 Machinery, Equipment and Furniture (Net)			
Total Assets			\$347,157
0910 Deferred Outflows of Resources			
Total Assets And Deferred Outflows Of Resources			\$347,157

LEA : 113364503 Manheim Township SD

Printed 10/29/2021 8:07:25 AM

Amounts Expressed in Whole Dollars	<u>Private Purpose Trust</u> (71)	<u>Investment Trust</u> (72)	<u>Pension Trust</u> (73)	<u>Student Activity Custodial</u> (81)
Liabilities, Deferred Inflows Of Resources And Net Position				
Liabilities				
0400 Due to Other Funds				
0410 Due to Other Governments, Primary Government and Component Units				
0420 Accounts Payable				855
0430 Contracts Payable				
0450 Short-Term Payables				
0460 Payroll Accruals and Withholdings				
0480 Unearned Revenues				
0490 Other Current Liabilities				
Total Liabilities				\$855
0950 Deferred Inflows of Resources				
Net Position				
0791 Net Investment in Capital Assets				
0009 Restricted Net Position (0792 – 0798)	188,768			157,534
0799 Unrestricted Net Position				
Total Net Position	\$188,768			\$157,534
Total Liabilities, Deferred Inflows Of Resources And Net Position	\$188,768			\$158,389

LEA : 113364503 Manheim Township SD

Printed 10/29/2021 8:07:25 AM

Amounts Expressed in Whole Dollars

Other Custodial
(89)

Fiduciary Component Units
(98)

Total Fiduciary Funds

Liabilities, Deferred Inflows Of Resources And Net Position

Liabilities

0400 Due to Other Funds	
0410 Due to Other Governments, Primary Government and Component Units	
0420 Accounts Payable	855
0430 Contracts Payable	
0450 Short-Term Payables	
0460 Payroll Accruals and Withholdings	
0480 Unearned Revenues	
0490 Other Current Liabilities	

Total Liabilities **\$855**

0950 Deferred Inflows of Resources

Net Position

0791 Net Investment in Capital Assets	
0009 Restricted Net Position (0792 – 0798)	346,302
0799 Unrestricted Net Position	

Total Net Position **\$346,302**

Total Liabilities, Deferred Inflows Of Resources And Net Position **\$347,157**

Amounts Expressed in Whole Dollars	<u>Private Purpose Trust</u> <u>(71)</u>	<u>Investment Trust</u> <u>(72)</u>	<u>Pension Trust</u> <u>(73)</u>	<u>Student Activity</u> <u>Custodial</u> <u>(81)</u>	<u>Other Custodial</u> <u>(89)</u>	<u>Fiduciary Component</u> <u>Units</u> <u>(98)</u>
Additions						
0091 Gifts and Contributions	16,556					
0095 Net Investment Earnings	219					
0092 Other Additions				68,717		
Deductions						
0093 Scholarships Awarded	10,945					
0094 Other Deductions				66,366		
Change In Net Position	\$5,830			\$2,351		
0006 Net Position – Beginning of Fiscal Year	182,938			155,183		
0007 Net Position Held in Trust for Pension Benefits						
Net Position - End of Fiscal Year	\$188,768			\$157,534		

Amounts Expressed in Whole Dollars	<u>Total Fiduciary Funds</u>
Additions	
0091 Gifts and Contributions	16,556
0095 Net Investment Earnings	219
0092 Other Additions	68,717
Deductions	
0093 Scholarships Awarded	10,945
0094 Other Deductions	66,366
Change in Net Position	\$8,181
0006 Net Position – Beginning of Fiscal Year	338,121
0007 Net Position Held in Trust for Pension Benefits	
Net Position - End of Fiscal Year	\$346,302

	<u>Revenue Reported In Current Year</u>	<u>Current Year Tax Accrual</u>	<u>Prior Year Tax Accrual</u>	<u>Taxes Collected In Current Year</u>
<u>Revenue from Local Sources</u>				
6111 Current Real Estate Taxes	66,562,717.01			66,562,717.01
6112 Interim Real Estate Taxes	334,223.92	103,108.56	122,978.52	354,093.88
6113 Public Utility Realty Taxes	72,907.43			72,907.43
6114 Payments in Lieu of Current Taxes - State / Local	257,898.63			257,898.63
6143 Current Act 511 Local Services Taxes	272,561.32	70,547.06	56,726.79	258,741.05
6151 Current Act 511 Earned Income Taxes	8,533,652.51	1,657,080.01	1,584,297.02	8,460,869.52
6153 Current Act 511 Real Estate Transfer Taxes	1,731,285.80	199,018.86	75,699.16	1,607,966.10
6411 Delinquent Real Estate Taxes	615,752.61	116,732.10	138,120.60	637,141.11
6500 Earnings on Investments	54,261.87			
6700 Revenues from LEA Activities	73,784.09			
6832 Federal IDEA Revenue Received as Pass Through	958,144.00			
6837 Federal Cares Act Revenue Received as Pass Through	458,164.80			
6839 Federal Revenue Received from Other Sources	47,210.62			
6910 Rentals	567,028.16			
6920 Contributions and Donations from Private Sources	223,621.96			
6941 Regular Day School Tuition	8,946.09			
6942 Summer School Tuition	121,145.00			
6944 Receipts from Other LEAs in Pennsylvania - Education	151,607.66			
6961 Transportation Services Provided Other Pennsylvania LEAs	34,246.80			
6991 Refunds of a Prior Year Expenditure	124,059.51			
6999 Other Revenues Not Specified Above	103,024.70			
TOTAL Revenue from Local Sources	\$81,306,244.49	\$2,146,486.59	\$1,977,822.09	\$78,212,334.73

**Revenue Reported
In Current Year**

Revenue from State Sources

7111 Basic Education Funding-Formula	6,096,735.05		
7112 Basic Education Funding-Social Security	1,601,955.42		
7160 Tuition for Orphans Subsidy	137,932.20		
7250 Migratory Children	1,679.00		
7271 Special Education funds for School-Aged Pupils	2,414,538.95		
7311 Pupil Transportation Subsidy	1,009,193.28		
7312 Nonpublic and Charter School Pupil Transportation Subsidy	115,885.00		
7320 Rental and Sinking Fund Payments / Building Reimbursement Subsidy	921,142.67		
7330 Health Services (Medical, Dental, Nurse, Act 25)	118,389.49		
7340 State Property Tax Reduction Allocation	1,123,470.03		
7361 School Safety and Security Grants	85,800.36		
7505 Ready to Learn Block Grant	474,037.00		
7820 State Share of Retirement Contributions	6,937,771.90		
TOTAL Revenue from State Sources	\$21,038,530.35		

**Revenue Reported
In Current Year**

Revenue from Federal Sources

8514 NCLB, Title I - Improving the Academic Achievement of the Disadvantaged	487,273.44		
8515 NCLB, Title II - Preparing, Training and Recruiting High Quality Teachers and Principals	112,230.90		
8516 NCLB, Title III - Language Instruction for Limited English Proficient and Immigrant Students	41,583.00		
8517 NCLB, Title IV - 21st Century Schools	47,583.57		
8741 Elementary and Secondary School Emergency Relief Fund (ESSER)	636,840.00		
8742 Governor's Emergency Education Relief Fund (GEER)	22,424.01		
8744 ARP ESSER - Elementary and Secondary School Emergency Relief Fund	36,064.80		
8749 Other CARES Act Funding	281,474.70		
TOTAL Revenue from Federal Sources	\$1,665,474.42		

**Revenue Reported
In Current Year**

Other Financing Sources

9290 Other Extended-Term Financing Proceeds	645,394.18			
9400 Sale of or Compensation for Loss of Fixed Assets	94,421.60			
9990 Insurance Recoveries	78,072.86			
TOTAL Other Financing Sources	\$817,888.64			
TOTAL FROM ALL SOURCES	\$104,828,137.90	\$2,146,486.59	\$1,977,822.09	\$78,212,334.73

LEA : 113364503 Manheim Township SD

Printed 10/29/2021 8:07:34 AM

	<u>General Fund (10)</u>	<u>Student Sponsored Activity Fund (21)</u>	<u>Public Purpose Trust (27)</u>	<u>Other Compt Approved (28)</u>	<u>Athletic / Activity (29)</u>	<u>Capital Reserve (690, 1850) (31)</u>
6000 Revenue from Local Sources						
6111 Current Real Estate Taxes	66,562,717.01					
6112 Interim Real Estate Taxes	334,223.92					
6113 Public Utility Realty Taxes	72,907.43					
6114 Payments in Lieu of Current Taxes - State / Local	257,898.63					
6143 Current Act 511 Local Services Taxes	272,561.32					
6151 Current Act 511 Earned Income Taxes	8,533,652.51					
6153 Current Act 511 Real Estate Transfer Taxes	1,731,285.80					
6411 Delinquent Real Estate Taxes	615,752.61					
6500 Earnings on Investments	54,261.87					
6700 Revenues from LEA Activities	73,784.09					
6832 Federal IDEA Revenue Received as Pass Through	958,144.00					
6837 Federal Cares Act Revenue Received as Pass Through	458,164.80					
6839 Federal Revenue Received from Other Sources	47,210.62					
6910 Rentals	567,028.16					
6920 Contributions and Donations from Private Sources	223,621.96					
6941 Regular Day School Tuition	8,946.09					
6942 Summer School Tuition	121,145.00					
6944 Receipts from Other LEAs in Pennsylvania - Education	151,607.66					
6961 Transportation Services Provided Other Pennsylvania LEAs	34,246.80					
6991 Refunds of a Prior Year Expenditure	124,059.51					
6999 Other Revenues Not Specified Above	103,024.70					
6000 Total Revenue from Local Sources	\$81,306,244.49					
7000 Revenue from State Sources						
7111 Basic Education Funding-Formula	6,096,735.05					
7112 Basic Education Funding-Social Security	1,601,955.42					
7160 Tuition for Orphans Subsidy	137,932.20					
7250 Migratory Children	1,679.00					
7271 Special Education funds for School-Aged Pupils	2,414,538.95					
7311 Pupil Transportation Subsidy	1,009,193.28					
7312 Nonpublic and Charter School Pupil Transportation Subsidy	115,885.00					
7320 Rental and Sinking Fund Payments / Building Reimbursement Subsidy	921,142.67					
7330 Health Services (Medical, Dental, Nurse, Act 25)	118,389.49					
7340 State Property Tax Reduction Allocation	1,123,470.03					
7361 School Safety and Security Grants	85,800.36					
7505 Ready to Learn Block Grant	474,037.00					

LEA : 113364503 Manheim Township SD

Printed 10/29/2021 8:07:34 AM

	<u>Capital Reserve</u> <u>(1431) (32)</u>	<u>Other Capital</u> <u>Projects Fund (39)</u>	<u>Debt Service (40)</u>	<u>Permanent (90)</u>	<u>Total</u>
6000 Revenue from Local Sources					
6111 Current Real Estate Taxes					66,562,717.01
6112 Interim Real Estate Taxes					334,223.92
6113 Public Utility Realty Taxes					72,907.43
6114 Payments in Lieu of Current Taxes - State / Local					257,898.63
6143 Current Act 511 Local Services Taxes					272,561.32
6151 Current Act 511 Earned Income Taxes					8,533,652.51
6153 Current Act 511 Real Estate Transfer Taxes					1,731,285.80
6411 Delinquent Real Estate Taxes					615,752.61
6500 Earnings on Investments	1,008.00	5,803.64	0.02		61,073.53
6700 Revenues from LEA Activities					73,784.09
6832 Federal IDEA Revenue Received as Pass Through					958,144.00
6837 Federal Cares Act Revenue Received as Pass Through					458,164.80
6839 Federal Revenue Received from Other Sources					47,210.62
6910 Rentals					567,028.16
6920 Contributions and Donations from Private Sources					223,621.96
6941 Regular Day School Tuition					8,946.09
6942 Summer School Tuition					121,145.00
6944 Receipts from Other LEAs in Pennsylvania - Education					151,607.66
6961 Transportation Services Provided Other Pennsylvania LEAs					34,246.80
6991 Refunds of a Prior Year Expenditure	286,288.00				410,347.51
6999 Other Revenues Not Specified Above					103,024.70
6000 Total Revenue from Local Sources	\$287,296.00	\$5,803.64	\$0.02		\$81,599,344.15
7000 Revenue from State Sources					
7111 Basic Education Funding-Formula					6,096,735.05
7112 Basic Education Funding-Social Security					1,601,955.42
7160 Tuition for Orphans Subsidy					137,932.20
7250 Migratory Children					1,679.00
7271 Special Education funds for School-Aged Pupils					2,414,538.95
7311 Pupil Transportation Subsidy					1,009,193.28
7312 Nonpublic and Charter School Pupil Transportation Subsidy					115,885.00
7320 Rental and Sinking Fund Payments / Building Reimbursement Subsidy					921,142.67
7330 Health Services (Medical, Dental, Nurse, Act 25)					118,389.49
7340 State Property Tax Reduction Allocation					1,123,470.03
7361 School Safety and Security Grants					85,800.36
7505 Ready to Learn Block Grant					474,037.00

	<u>General Fund (10)</u>	<u>Student Sponsored Activity Fund (21)</u>	<u>Public Purpose Trust (27)</u>	<u>Other Compt Approved (28)</u>	<u>Athletic / Activity (29)</u>	<u>Capital Reserve (690, 1850) (31)</u>
7000 Revenue from State Sources						
7820 State Share of Retirement Contributions	6,937,771.90					
7000 Total Revenue from State Sources	\$21,038,530.35					
8000 Revenue from Federal Sources						
8514 NCLB, Title I - Improving the Academic Achievement of the Disadvantaged	487,273.44					
8515 NCLB, Title II - Preparing, Training and Recruiting High Quality Teachers and Principals	112,230.90					
8516 NCLB, Title III - Language Instruction for Limited English Proficient and Immigrant Students	41,583.00					
8517 NCLB, Title IV - 21st Century Schools	47,583.57					
8741 Elementary and Secondary School Emergency Relief Fund (ESSER)	636,840.00					
8742 Governor's Emergency Education Relief Fund (GEER)	22,424.01					
8744 ARP ESSER - Elementary and Secondary School Emergency Relief Fund	36,064.80					
8749 Other CARES Act Funding	281,474.70					
8000 Total Revenue from Federal Sources	\$1,665,474.42					
9000 Other Financing Sources						
9120 Proceeds from Refunding of Bonds						
9290 Other Extended-Term Financing Proceeds	645,394.18					
9310 General Fund Transfers						
9400 Sale of or Compensation for Loss of Fixed Assets	94,421.60					
9990 Insurance Recoveries	78,072.86					
9000 Total Other Financing Sources	\$817,888.64					
Total From All Sources	\$104,828,137.90					

	<u>Capital Reserve</u> <u>(1431) (32)</u>	<u>Other Capital</u> <u>Projects Fund (39)</u>	<u>Debt Service (40)</u>	<u>Permanent (90)</u>	<u>Total</u>
7000 Revenue from State Sources					
7820 State Share of Retirement Contributions					6,937,771.90
7000 Total Revenue from State Sources					\$21,038,530.35
8000 Revenue from Federal Sources					
8514 NCLB, Title I - Improving the Academic Achievement of the Disadvantaged					487,273.44
8515 NCLB, Title II - Preparing, Training and Recruiting High Quality Teachers and Principals					112,230.90
8516 NCLB, Title III - Language Instruction for Limited English Proficient and Immigrant Students					41,583.00
8517 NCLB, Title IV - 21st Century Schools					47,583.57
8741 Elementary and Secondary School Emergency Relief Fund (ESSER)					636,840.00
8742 Governor's Emergency Education Relief Fund (GEER)					22,424.01
8744 ARP ESSER - Elementary and Secondary School Emergency Relief Fund					36,064.80
8749 Other CARES Act Funding					281,474.70
8000 Total Revenue from Federal Sources					\$1,665,474.42
9000 Other Financing Sources					
9120 Proceeds from Refunding of Bonds			79,615,000.00		79,615,000.00
9290 Other Extended-Term Financing Proceeds					645,394.18
9310 General Fund Transfers	503,450.00				503,450.00
9400 Sale of or Compensation for Loss of Fixed Assets					94,421.60
9990 Insurance Recoveries					78,072.86
9000 Total Other Financing Sources	\$503,450.00		\$79,615,000.00		\$80,936,338.64
Total From All Sources	\$790,746.00	\$5,803.64	\$79,615,000.02		\$185,239,687.56

	<u>General Fund (10)</u>	<u>Student Sponsored Activity Fund (21)</u>	<u>Public Purpose Trust (27)</u>	<u>Other Compt Approved (28)</u>	<u>Athletic / Activity (29)</u>	<u>Capital Reserve (690. 1850) (31)</u>
Revenue from Local Sources	81,306,244.49					
Revenue from State Sources	21,038,530.35					
Revenue from Federal Sources	1,665,474.42					
Other Financing Sources	817,888.64					
Total From All Sources	\$104,828,137.90					

	<u>Capital Reserve (1431)</u> <u>(32)</u>	<u>Other Capital Projects</u> <u>Fund (39)</u>	<u>Debt Service (40)</u>	<u>Permanent (90)</u>	<u>Total</u>
Revenue from Local Sources	287,296.00	5,803.64	0.02		81,599,344.15
Revenue from State Sources					21,038,530.35
Revenue from Federal Sources					1,665,474.42
Other Financing Sources	503,450.00		79,615,000.00		80,936,338.64
Total From All Sources	\$790,746.00	\$5,803.64	\$79,615,000.02		\$185,239,687.56

General Fund (10)

	<u>Total</u>
1000 Instruction	
100 Personnel Services – Salaries	
100 Personnel Services – Salaries	28,636,430.84
Total Personnel Services – Salaries	\$28,636,430.84
200 Personnel Services – Employee Benefits	
210 Group Insurance – Contracted Provider	84,720.49
220 Social Security Contributions	2,142,639.12
230 PSERS Retirement Contributions	9,790,366.44
250 Unemployment Compensation	21,214.12
260 Workers’ Compensation	164,023.27
270 Group Insurance – Self-Insurance	5,786,803.16
291 Other Retirement Plans	40,000.00
292 Health Savings Accounts	481,500.00
Total Personnel Services – Employee Benefits	\$18,511,266.60
300 Purchased Professional and Technical Services	
322 Professional Educational Services – Ius	2,072,479.23
323 Professional Educational Services – Other Educational Agencies	12,310.24
329 Professional Educational Services – Other	1,331,631.91
330 Other Professional Services	12,706.49
360 Employee Training and Development Services	5,700.00
390 Other Purchased Professional and Technical Services	12,237.58
Total Purchased Professional and Technical Services	\$3,447,065.45
400 Purchased Property Services	
410 Cleaning Services	2,067.50
430 Repairs and Maintenance Services	72,693.71
Total Purchased Property Services	\$74,761.21
500 Other Purchased Services	
530 Communications	20,520.65
561 Tuition To Other School Districts Within the State	314,367.12
562 Tuition To Pennsylvania Charter Schools	2,036,857.28
564 Tuition To Career and Technology Centers	960,290.77
567 Tuition To Approved Private Schools (APS) and PA Chartered Schools for the Deaf and Blind	240,310.56
568 Tuition To Private Residential Rehabilitative Institutions (PRRI) [In-State] and Detention Centers	7,847.52
569 Tuition – Other	313,877.50
580 Travel	739.77
594 IU Payment By Withholding for Institutionalized Children’s Programs – Special Classes	873.19
Total Other Purchased Services	\$3,895,684.36
600 Supplies	
610 General Supplies	445,328.27
620 Energy	338.23
630 Food	792.97
640 Books and Periodicals	242,881.77
650 Supplies & Fees – Technology Related	1,041,210.90
Total Supplies	\$1,730,552.14

General Fund (10)

1000 Instruction	<u>Total</u>
700 <u>Property</u>	
752 Capital Equipment – Original and Additional	11,905.87
756 Capitalized Technology Equipment – Original	645,394.18
Total Property	\$657,300.05
800 <u>Other Objects</u>	
810 Dues and Fees	25,991.46
Total Other Objects	\$25,991.46
Total 1000 Instruction	\$56,979,052.11

General Fund (10)

1100 Regular Programs – Elementary / Secondary

	<u>Elementary</u>	<u>Secondary</u>	<u>Federal</u>	<u>Total</u>
100 Personnel Services – Salaries				
100 Personnel Services – Salaries	12,498,394.29	11,090,185.58	454,213.45	24,042,793.32
Total Personnel Services – Salaries	\$12,498,394.29	\$11,090,185.58	\$454,213.45	\$24,042,793.32
200 Personnel Services – Employee Benefits				
210 Group Insurance – Contracted Provider	36,893.72	34,048.05	502.26	71,444.03
220 Social Security Contributions	935,256.51	829,889.92	33,967.97	1,799,114.40
230 PSERS Retirement Contributions	4,289,448.31	3,855,462.84	77,861.61	8,222,772.76
250 Unemployment Compensation	13,136.19	6,374.28		19,510.47
260 Workers' Compensation	70,168.75	66,714.65		136,883.40
270 Group Insurance – Self-Insurance	2,528,903.08	2,362,483.65	4,825.49	4,896,212.22
291 Other Retirement Plans	5,000.00	30,000.00		35,000.00
292 Health Savings Accounts	207,900.00	206,249.94	1,800.00	415,949.94
Total Personnel Services – Employee Benefits	\$8,086,706.56	\$7,391,223.33	\$118,957.33	\$15,596,887.22
300 Purchased Professional and Technical Services				
322 Professional Educational Services – Ius		10,034.25		10,034.25
329 Professional Educational Services – Other	410,015.52	413,094.28	1,187.50	824,297.30
330 Other Professional Services	221.49			221.49
390 Other Purchased Professional and Technical Services		3,960.00		3,960.00
Total Purchased Professional and Technical Services	\$410,237.01	\$427,088.53	\$1,187.50	\$838,513.04
400 Purchased Property Services				
410 Cleaning Services	2,067.50			2,067.50
430 Repairs and Maintenance Services	30,855.96	34,346.17		65,202.13
Total Purchased Property Services	\$32,923.46	\$34,346.17		\$67,269.63
500 Other Purchased Services				
530 Communications	12,453.67	8,020.63		20,474.30
561 Tuition To Other School Districts Within the State	1,566.50	81,325.25		82,891.75
562 Tuition To Pennsylvania Charter Schools	779,749.81	718,553.89		1,498,303.70
568 Tuition To Private Residential Rehabilitative Institutions (PRRI) [In-State] and Detention Centers		7,847.52		7,847.52
580 Travel	425.97			425.97
Total Other Purchased Services	\$794,195.95	\$815,747.29		\$1,609,943.24
600 Supplies				
610 General Supplies	215,959.27	161,704.39	6,107.29	383,770.95
620 Energy		338.23		338.23
630 Food	792.97			792.97
640 Books and Periodicals	131,579.03	101,919.58	1,098.76	234,597.37
650 Supplies & Fees – Technology Related	370,324.55	567,237.08	36,931.00	974,492.63
Total Supplies	\$718,655.82	\$831,199.28	\$44,137.05	\$1,593,992.15
700 Property				
752 Capital Equipment – Original and Additional		11,905.87		11,905.87
756 Capitalized Technology Equipment – Original	251,703.73	232,341.91		484,045.64
Total Property	\$251,703.73	\$244,247.78		\$495,951.51
800 Other Objects				

General Fund (10)

1100 Regular Programs – Elementary / Secondary

Elementary

Secondary

Federal

Total

800 Other Objects

810 Dues and Fees

20,838.00

20,838.00

Total Other Objects

\$20,838.00

\$20,838.00

Total 1100 Regular Programs – Elementary / Secondary

\$22,792,816.82

\$20,854,875.96

\$618,495.33

\$44,266,188.11

General Fund (10)

1110 Regular Programs

	<u>Elementary</u>	<u>Secondary</u>	<u>Federal</u>	<u>Total</u>
100 Personnel Services – Salaries				
100 Personnel Services – Salaries	12,498,394.29	11,090,185.58		23,588,579.87
Total Personnel Services – Salaries	\$12,498,394.29	\$11,090,185.58		\$23,588,579.87
200 Personnel Services – Employee Benefits				
210 Group Insurance – Contracted Provider	36,893.72	34,048.05		70,941.77
220 Social Security Contributions	935,256.51	829,889.92		1,765,146.43
230 PSERS Retirement Contributions	4,289,448.31	3,855,462.84		8,144,911.15
250 Unemployment Compensation	13,136.19	6,374.28		19,510.47
260 Workers' Compensation	70,168.75	66,714.65		136,883.40
270 Group Insurance – Self-Insurance	2,528,903.08	2,362,483.65		4,891,386.73
291 Other Retirement Plans	5,000.00	30,000.00		35,000.00
292 Health Savings Accounts	207,900.00	206,249.94		414,149.94
Total Personnel Services – Employee Benefits	\$8,086,706.56	\$7,391,223.33		\$15,477,929.89
300 Purchased Professional and Technical Services				
322 Professional Educational Services – Ius		10,034.25		10,034.25
329 Professional Educational Services – Other	410,015.52	413,094.28		823,109.80
330 Other Professional Services	221.49			221.49
390 Other Purchased Professional and Technical Services		3,960.00		3,960.00
Total Purchased Professional and Technical Services	\$410,237.01	\$427,088.53		\$837,325.54
400 Purchased Property Services				
410 Cleaning Services	2,067.50			2,067.50
430 Repairs and Maintenance Services	30,855.96	34,346.17		65,202.13
Total Purchased Property Services	\$32,923.46	\$34,346.17		\$67,269.63
500 Other Purchased Services				
530 Communications	12,453.67	8,020.63		20,474.30
561 Tuition To Other School Districts Within the State	1,566.50	81,325.25		82,891.75
562 Tuition To Pennsylvania Charter Schools	779,749.81	718,553.89		1,498,303.70
568 Tuition To Private Residential Rehabilitative Institutions (PRRI) [In-State] and Detention Centers		7,847.52		7,847.52
580 Travel	425.97			425.97
Total Other Purchased Services	\$794,195.95	\$815,747.29		\$1,609,943.24
600 Supplies				
610 General Supplies	215,959.27	161,704.39		377,663.66
620 Energy		338.23		338.23
630 Food	792.97			792.97
640 Books and Periodicals	131,579.03	101,919.58		233,498.61
650 Supplies & Fees – Technology Related	370,324.55	567,237.08		937,561.63
Total Supplies	\$718,655.82	\$831,199.28		\$1,549,855.10
700 Property				
752 Capital Equipment – Original and Additional		11,905.87		11,905.87
756 Capitalized Technology Equipment – Original	251,703.73	232,341.91		484,045.64
Total Property	\$251,703.73	\$244,247.78		\$495,951.51
800 Other Objects				

General Fund (10)

1110 Regular Programs

800 Other Objects

810 Dues and Fees

Total Other Objects

Total 1110 Regular Programs

Elementary

Secondary

Federal

Total

20,838.00

20,838.00

\$20,838.00

\$20,838.00

\$22,792,816.82

\$20,854,875.96

\$43,647,692.78

General Fund (10)

	<u>Elementary</u>	<u>Secondary</u>	<u>Federal</u>	<u>Total</u>
1190 Federally-Funded Regular Programs				
100 Personnel Services – Salaries				
100 Personnel Services – Salaries			454,213.45	454,213.45
Total Personnel Services – Salaries			\$454,213.45	\$454,213.45
200 Personnel Services – Employee Benefits				
210 Group Insurance – Contracted Provider			502.26	502.26
220 Social Security Contributions			33,967.97	33,967.97
230 PSERS Retirement Contributions			77,861.61	77,861.61
270 Group Insurance – Self-Insurance			4,825.49	4,825.49
292 Health Savings Accounts			1,800.00	1,800.00
Total Personnel Services – Employee Benefits			\$118,957.33	\$118,957.33
300 Purchased Professional and Technical Services				
329 Professional Educational Services – Other			1,187.50	1,187.50
Total Purchased Professional and Technical Services			\$1,187.50	\$1,187.50
600 Supplies				
610 General Supplies			6,107.29	6,107.29
640 Books and Periodicals			1,098.76	1,098.76
650 Supplies & Fees – Technology Related			36,931.00	36,931.00
Total Supplies			\$44,137.05	\$44,137.05
Total 1190 Federally-Funded Regular Programs			\$618,495.33	\$618,495.33

General Fund (10)

1200 Special Programs – Elementary / Secondary

	<u>Elementary</u>	<u>Secondary</u>	<u>Federal</u>	<u>Total</u>
100 Personnel Services – Salaries				
100 Personnel Services – Salaries	2,625,564.14	1,932,347.88	4,637.50	4,562,549.52
Total Personnel Services – Salaries	\$2,625,564.14	\$1,932,347.88	\$4,637.50	\$4,562,549.52
200 Personnel Services – Employee Benefits				
210 Group Insurance – Contracted Provider	7,257.69	6,018.77		13,276.46
220 Social Security Contributions	197,128.77	143,672.03	352.27	341,153.07
230 PSERS Retirement Contributions	896,546.40	659,522.53	800.19	1,556,869.12
250 Unemployment Compensation	702.94	1,000.71		1,703.65
260 Workers' Compensation	16,234.59	10,806.59		27,041.18
270 Group Insurance – Self-Insurance	455,940.41	434,650.53		890,590.94
291 Other Retirement Plans		5,000.00		5,000.00
292 Health Savings Accounts	34,200.00	31,350.06		65,550.06
Total Personnel Services – Employee Benefits	\$1,608,010.80	\$1,292,021.22	\$1,152.46	\$2,901,184.48
300 Purchased Professional and Technical Services				
322 Professional Educational Services – Ius	567,013.47	744,246.61	743,041.00	2,054,301.08
323 Professional Educational Services – Other Educational Agencies	11,641.18	669.06		12,310.24
329 Professional Educational Services – Other	139,887.58	126,281.35	215,703.00	481,871.93
390 Other Purchased Professional and Technical Services	3,632.25	4,645.33		8,277.58
Total Purchased Professional and Technical Services	\$722,174.48	\$875,842.35	\$958,744.00	\$2,556,760.83
400 Purchased Property Services				
430 Repairs and Maintenance Services	3,745.79	3,745.79		7,491.58
Total Purchased Property Services	\$3,745.79	\$3,745.79		\$7,491.58
500 Other Purchased Services				
530 Communications		46.35		46.35
561 Tuition To Other School Districts Within the State	3,846.90	208,985.13		212,832.03
562 Tuition To Pennsylvania Charter Schools	224,679.39	313,874.19		538,553.58
567 Tuition To Approved Private Schools (APS) and PA Chartered Schools for the Deaf and Blind		240,310.56		240,310.56
569 Tuition – Other		243,554.12		243,554.12
580 Travel	313.80			313.80
594 IU Payment By Withholding for Institutionalized Children's Programs – Special Classes		873.19		873.19
Total Other Purchased Services	\$228,840.09	\$1,007,643.54		\$1,236,483.63
600 Supplies				
610 General Supplies	25,405.55	12,657.97		38,063.52
640 Books and Periodicals	5,273.69	3,010.71		8,284.40
650 Supplies & Fees – Technology Related	4,172.77	2,588.71	15,695.22	22,456.70
Total Supplies	\$34,852.01	\$18,257.39	\$15,695.22	\$68,804.62
700 Property				
756 Capitalized Technology Equipment – Original	83,901.24	77,447.30		161,348.54
Total Property	\$83,901.24	\$77,447.30		\$161,348.54
800 Other Objects				
810 Dues and Fees	2,679.80	2,473.66		5,153.46

General Fund (10)

1200 Special Programs – Elementary / Secondary

	<u>Elementary</u>	<u>Secondary</u>	<u>Federal</u>	<u>Total</u>
Total Other Objects	\$2,679.80	\$2,473.66		\$5,153.46
Total 1200 Special Programs – Elementary / Secondary	\$5,309,768.35	\$5,209,779.13	\$980,229.18	\$11,499,776.66

General Fund (10)

1210 Life Skills Support

	<u>Elementary</u>	<u>Secondary</u>	<u>Federal</u>	<u>Total</u>
100 Personnel Services – Salaries				
100 Personnel Services – Salaries	37,757.47	121,853.04		159,610.51
Total Personnel Services – Salaries	\$37,757.47	\$121,853.04		\$159,610.51
200 Personnel Services – Employee Benefits				
210 Group Insurance – Contracted Provider	28.68	193.40		222.08
220 Social Security Contributions	2,870.88	9,236.86		12,107.74
230 PSERS Retirement Contributions	12,987.08	41,674.81		54,661.89
260 Workers' Compensation	98.69	246.73		345.42
270 Group Insurance – Self-Insurance	4,505.68	9,069.41		13,575.09
292 Health Savings Accounts		900.00		900.00
Total Personnel Services – Employee Benefits	\$20,491.01	\$61,321.21		\$81,812.22
300 Purchased Professional and Technical Services				
329 Professional Educational Services – Other		2,118.68		2,118.68
Total Purchased Professional and Technical Services		\$2,118.68		\$2,118.68
600 Supplies				
610 General Supplies	657.89	156.06		813.95
640 Books and Periodicals		1,897.49		1,897.49
650 Supplies & Fees – Technology Related	745.59			745.59
Total Supplies	\$1,403.48	\$2,053.55		\$3,457.03
Total 1210 Life Skills Support	\$59,651.96	\$187,346.48		\$246,998.44

General Fund (10)

	<u>Elementary</u>	<u>Secondary</u>	<u>Federal</u>	<u>Total</u>
1220 Sensory Support				
100 Personnel Services – Salaries				
100 Personnel Services – Salaries	335,079.95	62,354.00		397,433.95
Total Personnel Services – Salaries	\$335,079.95	\$62,354.00		\$397,433.95
200 Personnel Services – Employee Benefits				
210 Group Insurance – Contracted Provider	1,102.88	239.63		1,342.51
220 Social Security Contributions	24,913.18	4,375.34		29,288.52
230 PSERS Retirement Contributions	114,936.65	21,518.38		136,455.03
260 Workers' Compensation	1,973.82			1,973.82
270 Group Insurance – Self-Insurance	72,858.44	21,817.62		94,676.06
292 Health Savings Accounts	6,300.00	1,800.00		8,100.00
Total Personnel Services – Employee Benefits	\$222,084.97	\$49,750.97		\$271,835.94
300 Purchased Professional and Technical Services				
322 Professional Educational Services – Ius	95,543.98	96,882.05		192,426.03
390 Other Purchased Professional and Technical Services	3,632.25	4,645.33		8,277.58
Total Purchased Professional and Technical Services	\$99,176.23	\$101,527.38		\$200,703.61
500 Other Purchased Services				
580 Travel	96.32			96.32
Total Other Purchased Services	\$96.32			\$96.32
600 Supplies				
610 General Supplies	4,265.46	135.70		4,401.16
640 Books and Periodicals	621.60			621.60
Total Supplies	\$4,887.06	\$135.70		\$5,022.76
Total 1220 Sensory Support	\$661,324.53	\$213,768.05		\$875,092.58

General Fund (10)

1230 Emotional Support

	<u>Elementary</u>	<u>Secondary</u>	<u>Federal</u>	<u>Total</u>
100 Personnel Services – Salaries				
100 Personnel Services – Salaries	581,601.06	240,362.68		821,963.74
Total Personnel Services – Salaries	\$581,601.06	\$240,362.68		\$821,963.74
200 Personnel Services – Employee Benefits				
210 Group Insurance – Contracted Provider	1,770.48	589.41		2,359.89
220 Social Security Contributions	43,530.38	18,261.27		61,791.65
230 PSERS Retirement Contributions	197,190.19	82,845.65		280,035.84
250 Unemployment Compensation		148.17		148.17
260 Workers' Compensation	4,046.31	1,085.60		5,131.91
270 Group Insurance – Self-Insurance	76,872.86	39,628.38		116,501.24
292 Health Savings Accounts	4,050.00	4,500.00		8,550.00
Total Personnel Services – Employee Benefits	\$327,460.22	\$147,058.48		\$474,518.70
300 Purchased Professional and Technical Services				
322 Professional Educational Services – Ius	471,469.49	264,150.68		735,620.17
323 Professional Educational Services – Other Educational Agencies	11,641.18	669.06		12,310.24
329 Professional Educational Services – Other	11,592.91	24,855.67		36,448.58
Total Purchased Professional and Technical Services	\$494,703.58	\$289,675.41		\$784,378.99
500 Other Purchased Services				
561 Tuition To Other School Districts Within the State		72,425.00		72,425.00
567 Tuition To Approved Private Schools (APS) and PA Chartered Schools for the Deaf and Blind		9,375.00		9,375.00
569 Tuition – Other		243,554.12		243,554.12
Total Other Purchased Services		\$325,354.12		\$325,354.12
600 Supplies				
610 General Supplies	7,014.60	775.90		7,790.50
640 Books and Periodicals	1,960.77	705.38		2,666.15
Total Supplies	\$8,975.37	\$1,481.28		\$10,456.65
Total 1230 Emotional Support	\$1,412,740.23	\$1,003,931.97		\$2,416,672.20

General Fund (10)

1240 Academic Support

	<u>Elementary</u>	<u>Secondary</u>	<u>Federal</u>	<u>Total</u>
100 Personnel Services – Salaries				
100 Personnel Services – Salaries	1,561,009.78	1,447,063.38		3,008,073.16
Total Personnel Services – Salaries	\$1,561,009.78	\$1,447,063.38		\$3,008,073.16
200 Personnel Services – Employee Benefits				
210 Group Insurance – Contracted Provider	4,226.75	4,756.70		8,983.45
220 Social Security Contributions	117,545.83	107,384.97		224,930.80
230 PSERS Retirement Contributions	534,008.56	492,574.06		1,026,582.62
250 Unemployment Compensation	702.94	852.54		1,555.48
260 Workers' Compensation	9,869.04	9,079.50		18,948.54
270 Group Insurance – Self-Insurance	290,852.37	349,164.16		640,016.53
291 Other Retirement Plans		5,000.00		5,000.00
292 Health Savings Accounts	22,050.00	22,350.06		44,400.06
Total Personnel Services – Employee Benefits	\$979,255.49	\$991,161.99		\$1,970,417.48
300 Purchased Professional and Technical Services				
322 Professional Educational Services – Ius		137,503.22		137,503.22
329 Professional Educational Services – Other	128,294.67	99,307.00		227,601.67
Total Purchased Professional and Technical Services	\$128,294.67	\$236,810.22		\$365,104.89
400 Purchased Property Services				
430 Repairs and Maintenance Services	3,745.79	3,745.79		7,491.58
Total Purchased Property Services	\$3,745.79	\$3,745.79		\$7,491.58
500 Other Purchased Services				
530 Communications		46.35		46.35
561 Tuition To Other School Districts Within the State	3,846.90	135,933.13		139,780.03
562 Tuition To Pennsylvania Charter Schools	224,679.39	313,874.19		538,553.58
580 Travel	217.48			217.48
Total Other Purchased Services	\$228,743.77	\$449,853.67		\$678,597.44
600 Supplies				
610 General Supplies	11,188.15	822.92		12,011.07
640 Books and Periodicals	2,691.32	407.84		3,099.16
650 Supplies & Fees – Technology Related	2,661.59	2,588.71		5,250.30
Total Supplies	\$16,541.06	\$3,819.47		\$20,360.53
Total 1240 Academic Support	\$2,917,590.56	\$3,132,454.52		\$6,050,045.08

General Fund (10)

	<u>Elementary</u>	<u>Secondary</u>	<u>Federal</u>	<u>Total</u>
1241 Learning Support – Public				
100 Personnel Services – Salaries				
100 Personnel Services – Salaries	1,311,062.78	1,137,504.93		2,448,567.71
Total Personnel Services – Salaries	\$1,311,062.78	\$1,137,504.93		\$2,448,567.71
200 Personnel Services – Employee Benefits				
210 Group Insurance – Contracted Provider	3,562.19	4,077.35		7,639.54
220 Social Security Contributions	98,741.09	84,258.46		182,999.55
230 PSERS Retirement Contributions	448,164.49	385,984.52		834,149.01
250 Unemployment Compensation	702.94	852.54		1,555.48
260 Workers' Compensation	8,388.68	7,697.84		16,086.52
270 Group Insurance – Self-Insurance	234,306.75	305,511.66		539,818.41
291 Other Retirement Plans		5,000.00		5,000.00
292 Health Savings Accounts	16,650.00	18,900.00		35,550.00
Total Personnel Services – Employee Benefits	\$810,516.14	\$812,282.37		\$1,622,798.51
300 Purchased Professional and Technical Services				
322 Professional Educational Services – Ius		137,503.22		137,503.22
329 Professional Educational Services – Other	120,659.34	84,116.34		204,775.68
Total Purchased Professional and Technical Services	\$120,659.34	\$221,619.56		\$342,278.90
400 Purchased Property Services				
430 Repairs and Maintenance Services	3,745.79	3,745.79		7,491.58
Total Purchased Property Services	\$3,745.79	\$3,745.79		\$7,491.58
500 Other Purchased Services				
530 Communications		46.35		46.35
561 Tuition To Other School Districts Within the State	3,846.90	135,933.13		139,780.03
562 Tuition To Pennsylvania Charter Schools	224,679.39	313,874.19		538,553.58
Total Other Purchased Services	\$228,526.29	\$449,853.67		\$678,379.96
600 Supplies				
610 General Supplies	4,054.49	372.92		4,427.41
640 Books and Periodicals	2,353.20	407.84		2,761.04
650 Supplies & Fees – Technology Related	2,661.59	2,588.71		5,250.30
Total Supplies	\$9,069.28	\$3,369.47		\$12,438.75
Total 1241 Learning Support – Public	\$2,483,579.62	\$2,628,375.79		\$5,111,955.41

General Fund (10)

1243 Gifted Support

	<u>Elementary</u>	<u>Secondary</u>	<u>Federal</u>	<u>Total</u>
100 Personnel Services – Salaries				
100 Personnel Services – Salaries	249,947.00	309,558.45		559,505.45
Total Personnel Services – Salaries	\$249,947.00	\$309,558.45		\$559,505.45
200 Personnel Services – Employee Benefits				
210 Group Insurance – Contracted Provider	664.56	679.35		1,343.91
220 Social Security Contributions	18,804.74	23,126.51		41,931.25
230 PSERS Retirement Contributions	85,844.07	106,589.54		192,433.61
260 Workers' Compensation	1,480.36	1,381.66		2,862.02
270 Group Insurance – Self-Insurance	56,545.62	43,652.50		100,198.12
292 Health Savings Accounts	5,400.00	3,450.06		8,850.06
Total Personnel Services – Employee Benefits	\$168,739.35	\$178,879.62		\$347,618.97
300 Purchased Professional and Technical Services				
329 Professional Educational Services – Other	7,635.33	15,190.66		22,825.99
Total Purchased Professional and Technical Services	\$7,635.33	\$15,190.66		\$22,825.99
500 Other Purchased Services				
580 Travel	217.48			217.48
Total Other Purchased Services	\$217.48			\$217.48
600 Supplies				
610 General Supplies	7,133.66	450.00		7,583.66
640 Books and Periodicals	338.12			338.12
Total Supplies	\$7,471.78	\$450.00		\$7,921.78
Total 1243 Gifted Support	\$434,010.94	\$504,078.73		\$938,089.67

General Fund (10)

1270 Multi-Handicapped Support

100 Personnel Services – Salaries

	<u>Elementary</u>	<u>Secondary</u>	<u>Federal</u>	<u>Total</u>
100 Personnel Services – Salaries	110,115.88	60,714.78		170,830.66
Total Personnel Services – Salaries	\$110,115.88	\$60,714.78		\$170,830.66

200 Personnel Services – Employee Benefits

210 Group Insurance – Contracted Provider	128.90	239.63		368.53
220 Social Security Contributions	8,268.50	4,413.59		12,682.09
230 PSERS Retirement Contributions	37,423.92	20,909.63		58,333.55
260 Workers' Compensation	246.73	394.76		641.49
270 Group Insurance – Self-Insurance	10,851.06	14,970.96		25,822.02
292 Health Savings Accounts	1,800.00	1,800.00		3,600.00
Total Personnel Services – Employee Benefits	\$58,719.11	\$42,728.57		\$101,447.68

600 Supplies

610 General Supplies	2,279.45	10,767.39		13,046.84
650 Supplies & Fees – Technology Related	765.59			765.59
Total Supplies	\$3,045.04	\$10,767.39		\$13,812.43
Total 1270 Multi-Handicapped Support	\$171,880.03	\$114,210.74		\$286,090.77

General Fund (10)

	<u>Elementary</u>	<u>Secondary</u>	<u>Federal</u>	<u>Total</u>
1290 Special Programs - Other Support				
100 Personnel Services – Salaries				
100 Personnel Services – Salaries			4,637.50	4,637.50
Total Personnel Services – Salaries			\$4,637.50	\$4,637.50
200 Personnel Services – Employee Benefits				
220 Social Security Contributions			352.27	352.27
230 PSERS Retirement Contributions			800.19	800.19
Total Personnel Services – Employee Benefits			\$1,152.46	\$1,152.46
300 Purchased Professional and Technical Services				
322 Professional Educational Services – Ius		245,710.66	743,041.00	988,751.66
329 Professional Educational Services – Other			215,703.00	215,703.00
Total Purchased Professional and Technical Services		\$245,710.66	\$958,744.00	\$1,204,454.66
500 Other Purchased Services				
561 Tuition To Other School Districts Within the State		627.00		627.00
567 Tuition To Approved Private Schools (APS) and PA Chartered Schools for the Deaf and Blind		230,935.56		230,935.56
594 IU Payment By Withholding for Institutionalized Children’s Programs – Special Classes		873.19		873.19
Total Other Purchased Services		\$232,435.75		\$232,435.75
600 Supplies				
650 Supplies & Fees – Technology Related			15,695.22	15,695.22
Total Supplies			\$15,695.22	\$15,695.22
700 Property				
756 Capitalized Technology Equipment – Original	83,901.24	77,447.30		161,348.54
Total Property	\$83,901.24	\$77,447.30		\$161,348.54
800 Other Objects				
810 Dues and Fees	2,679.80	2,473.66		5,153.46
Total Other Objects	\$2,679.80	\$2,473.66		\$5,153.46
Total 1290 Special Programs - Other Support	\$86,581.04	\$558,067.37	\$980,229.18	\$1,624,877.59

General Fund (10)

1300 Vocational Education

500 Other Purchased Services

564 Tuition To Career and Technology Centers

Total Other Purchased Services

Total 1300 Vocational Education

Elementary

Secondary

Federal

Total

960,290.77

960,290.77

\$960,290.77

\$960,290.77

\$960,290.77

\$960,290.77

General Fund (10)

	<u>Elementary</u>	<u>Secondary</u>	<u>Federal</u>	<u>Total</u>
1400 Other Instructional Programs – Elementary / Secondary				
100 Personnel Services – Salaries				
100 Personnel Services – Salaries	1,900.00	29,188.00		31,088.00
Total Personnel Services – Salaries	\$1,900.00	\$29,188.00		\$31,088.00
200 Personnel Services – Employee Benefits				
220 Social Security Contributions	141.22	2,230.43		2,371.65
230 PSERS Retirement Contributions	651.73	10,072.83		10,724.56
260 Workers’ Compensation	98.69			98.69
Total Personnel Services – Employee Benefits	\$891.64	\$12,303.26		\$13,194.90
300 Purchased Professional and Technical Services				
329 Professional Educational Services – Other	2,444.00	23,018.68		25,462.68
Total Purchased Professional and Technical Services	\$2,444.00	\$23,018.68		\$25,462.68
500 Other Purchased Services				
561 Tuition To Other School Districts Within the State		18,643.34		18,643.34
569 Tuition – Other		70,323.38		70,323.38
Total Other Purchased Services		\$88,966.72		\$88,966.72
600 Supplies				
610 General Supplies	591.46			591.46
650 Supplies & Fees – Technology Related		31,706.00		31,706.00
Total Supplies	\$591.46	\$31,706.00		\$32,297.46
Total 1400 Other Instructional Programs – Elementary / Secondary	\$5,827.10	\$185,182.66		\$191,009.76

General Fund (10)

	<u>Elementary</u>	<u>Secondary</u>	<u>Federal</u>	<u>Total</u>
1420 Summer School				
100 Personnel Services – Salaries				
100 Personnel Services – Salaries	1,900.00	27,825.00		29,725.00
Total Personnel Services – Salaries	\$1,900.00	\$27,825.00		\$29,725.00
200 Personnel Services – Employee Benefits				
220 Social Security Contributions	141.22	2,126.18		2,267.40
230 PSERS Retirement Contributions	651.73	9,602.45		10,254.18
260 Workers’ Compensation	98.69			98.69
Total Personnel Services – Employee Benefits	\$891.64	\$11,728.63		\$12,620.27
600 Supplies				
610 General Supplies	591.46			591.46
650 Supplies & Fees – Technology Related		31,706.00		31,706.00
Total Supplies	\$591.46	\$31,706.00		\$32,297.46
Total 1420 Summer School	\$3,383.10	\$71,259.63		\$74,642.73

General Fund (10)

	<u>Elementary</u>	<u>Secondary</u>	<u>Federal</u>	<u>Total</u>
1430 Homebound Instruction				
100 Personnel Services – Salaries				
100 Personnel Services – Salaries		1,363.00		1,363.00
Total Personnel Services – Salaries		\$1,363.00		\$1,363.00
200 Personnel Services – Employee Benefits				
220 Social Security Contributions		104.25		104.25
230 PSERS Retirement Contributions		470.38		470.38
Total Personnel Services – Employee Benefits		\$574.63		\$574.63
300 Purchased Professional and Technical Services				
329 Professional Educational Services – Other	2,444.00	23,018.68		25,462.68
Total Purchased Professional and Technical Services	\$2,444.00	\$23,018.68		\$25,462.68
Total 1430 Homebound Instruction	\$2,444.00	\$24,956.31		\$27,400.31

General Fund (10)

1440 Alternative Regular Education Programs

Elementary

Secondary

Federal

Total

500 Other Purchased Services

561 Tuition To Other School Districts Within the State

18,643.34

18,643.34

569 Tuition – Other

70,323.38

70,323.38

Total Other Purchased Services

\$88,966.72

\$88,966.72

Total 1440 Alternative Regular Education Programs

\$88,966.72

\$88,966.72

General Fund (10)

1441 Adjudicated / Court-Placed Programs

Elementary

Secondary

Federal

Total

500 Other Purchased Services

561 Tuition To Other School Districts Within the State

18,643.34

18,643.34

Total Other Purchased Services

\$18,643.34

\$18,643.34

Total 1441 Adjudicated / Court-Placed Programs

\$18,643.34

\$18,643.34

General Fund (10)

1442 Alternative Education Programs

500 Other Purchased Services

569 Tuition – Other

Total Other Purchased Services

Total 1442 Alternative Education Programs

Elementary

Secondary

Federal

Total

70,323.38

70,323.38

\$70,323.38

\$70,323.38

\$70,323.38

\$70,323.38

General Fund (10)

1500 Nonpublic School Programs

Elementary Secondary Federal Total

300 Purchased Professional and Technical Services

322 Professional Educational Services – Ius			8,143.90	8,143.90
330 Other Professional Services			12,485.00	12,485.00
360 Employee Training and Development Services			5,700.00	5,700.00

Total Purchased Professional and Technical Services			\$26,328.90	\$26,328.90
------------------------------------------------------------	--	--	--------------------	--------------------

600 Supplies

610 General Supplies			22,902.34	22,902.34
650 Supplies & Fees – Technology Related			12,555.57	12,555.57

Total Supplies			\$35,457.91	\$35,457.91
-----------------------	--	--	--------------------	--------------------

Total 1500 Nonpublic School Programs			\$61,786.81	\$61,786.81
---------------------------------------------	--	--	--------------------	--------------------

General Fund (10)

2000 Support Services

Total

100 Personnel Services – Salaries

100 Personnel Services – Salaries 11,310,234.96

Total Personnel Services – Salaries \$11,310,234.96

200 Personnel Services – Employee Benefits

210 Group Insurance – Contracted Provider 38,256.69

220 Social Security Contributions 846,701.40

230 PSERS Retirement Contributions 3,862,272.54

240 Tuition Reimbursement 384,279.75

250 Unemployment Compensation 5,271.88

260 Workers' Compensation 63,358.77

270 Group Insurance – Self-Insurance 2,613,888.21

291 Other Retirement Plans 108,962.55

292 Health Savings Accounts 198,900.00

299 All Other Employee Benefits 27,488.30

Total Personnel Services – Employee Benefits \$8,149,380.09

300 Purchased Professional and Technical Services

310 Official / Administrative Services 124,352.42

322 Professional Educational Services – Ius 20,806.80

329 Professional Educational Services – Other 29,292.76

330 Other Professional Services 611,085.54

340 Technical Services 26,978.09

350 Security / Safety Services 154,749.00

360 Employee Training and Development Services 26,031.91

390 Other Purchased Professional and Technical Services 71,926.96

Total Purchased Professional and Technical Services \$1,065,223.48

400 Purchased Property Services

410 Cleaning Services 572,277.04

420 Utility Services 100,211.68

430 Repairs and Maintenance Services 781,951.20

440 Rentals 55,546.43

450 Construction Services 8,231.94

460 Extermination Services 6,925.72

490 Other Purchased Property Services 100.00

Total Purchased Property Services \$1,525,244.01

500 Other Purchased Services

513 Contracted Carriers 3,670,206.80

516 Student Transportation Services From the IU 122,099.89

520 Insurance – General 316.00

523 General Property and Liability Insurance 399,994.34

530 Communications 144,862.83

549 Other Advertising/Public Relations 13,130.96

550 Printing and Binding 11,220.15

580 Travel 6,547.24

595 IU Payments By Withholding 53,007.12

General Fund (10)

2000 Support Services

Total

Total Other Purchased Services	\$4,421,385.33
600 Supplies	
610 General Supplies	1,189,426.56
620 Energy	1,329,594.83
630 Food	7,956.90
640 Books and Periodicals	39,623.69
650 Supplies & Fees – Technology Related	701,944.50
Total Supplies	\$3,268,546.48
700 Property	
752 Capital Equipment – Original and Additional	21,893.34
756 Capitalized Technology Equipment – Original	149,102.97
Total Property	\$170,996.31
800 Other Objects	
810 Dues and Fees	60,796.73
820 Claims and Judgments Against the LEA	25,500.00
890 Miscellaneous Expenditures	400.00
Total Other Objects	\$86,696.73
Total 2000 Support Services	\$29,997,707.39

General Fund (10)

	<u>Elementary</u>	<u>Secondary</u>	<u>Federal</u>	<u>Total</u>
2100 Support Services – Students				
100 Personnel Services – Salaries				
100 Personnel Services – Salaries	985,718.77	1,000,770.88		2,243,795.52
Total Personnel Services – Salaries	\$985,718.77	\$1,000,770.88		\$2,243,795.52
200 Personnel Services – Employee Benefits				
210 Group Insurance – Contracted Provider	2,747.67	3,121.53		6,793.47
220 Social Security Contributions	74,213.23	74,676.13		168,074.86
230 PSERS Retirement Contributions	339,519.20	341,795.68		769,987.80
260 Workers' Compensation	5,311.55	5,988.53		12,336.33
270 Group Insurance – Self-Insurance	194,905.03	193,713.46		459,786.55
292 Health Savings Accounts	11,188.00	18,312.00		35,300.00
299 All Other Employee Benefits	21.84	20.16		42.00
Total Personnel Services – Employee Benefits	\$627,906.52	\$637,627.49		\$1,452,321.01
300 Purchased Professional and Technical Services				
322 Professional Educational Services – lus	1,176.00			1,176.00
329 Professional Educational Services – Other		8,794.72		8,794.72
330 Other Professional Services	14,522.58	4,658.00		19,180.58
340 Technical Services				3,800.00
390 Other Purchased Professional and Technical Services	9,306.26	5,547.33		14,853.59
Total Purchased Professional and Technical Services	\$25,004.84	\$19,000.05		\$47,804.89
500 Other Purchased Services				
530 Communications	2,065.12	2,174.54		4,239.66
550 Printing and Binding	629.72	581.28		1,211.00
580 Travel	14.67			1,141.26
Total Other Purchased Services	\$2,709.51	\$2,755.82		\$6,591.92
600 Supplies				
610 General Supplies	4,387.19	4,225.59		9,639.90
630 Food	17.03	15.72		234.00
640 Books and Periodicals	292.46	269.96		562.42
650 Supplies & Fees – Technology Related	14,504.62	24,784.74		97,634.36
Total Supplies	\$19,201.30	\$29,296.01		\$108,070.68
800 Other Objects				
810 Dues and Fees	46.28	667.72		714.00
Total Other Objects	\$46.28	\$667.72		\$714.00
Total 2100 Support Services – Students	\$1,660,587.22	\$1,690,117.97		\$3,859,298.02

General Fund (10)

2110 Supervision of Student Services

	<u>Elementary</u>	<u>Secondary</u>	<u>Federal</u>	<u>Total</u>
100 Personnel Services – Salaries				
100 Personnel Services – Salaries	47,651.05	47,297.16		94,948.21
Total Personnel Services – Salaries	\$47,651.05	\$47,297.16		\$94,948.21
200 Personnel Services – Employee Benefits				
210 Group Insurance – Contracted Provider	83.17	82.05		165.22
220 Social Security Contributions	3,652.77	3,626.06		7,278.83
230 PSERS Retirement Contributions	16,444.31	16,322.25		32,766.56
260 Workers' Compensation	272.39	270.42		542.81
270 Group Insurance – Self-Insurance	4,518.60	4,398.84		8,917.44
292 Health Savings Accounts	208.00	192.00		400.00
299 All Other Employee Benefits	21.84	20.16		42.00
Total Personnel Services – Employee Benefits	\$25,201.08	\$24,911.78		\$50,112.86
500 Other Purchased Services				
530 Communications	52.82	44.67		97.49
550 Printing and Binding	629.72	581.28		1,211.00
Total Other Purchased Services	\$682.54	\$625.95		\$1,308.49
600 Supplies				
610 General Supplies	287.28	265.18		552.46
630 Food	17.03	15.72		32.75
640 Books and Periodicals	292.46	269.96		562.42
Total Supplies	\$596.77	\$550.86		\$1,147.63
800 Other Objects				
810 Dues and Fees	46.28	42.72		89.00
Total Other Objects	\$46.28	\$42.72		\$89.00
Total 2110 Supervision of Student Services	\$74,177.72	\$73,428.47		\$147,606.19

General Fund (10)

	<u>Elementary</u>	<u>Secondary</u>	<u>Federal</u>	<u>Total</u>
2111 Supervision of Student Services – Head of Component				
100 Personnel Services – Salaries				
100 Personnel Services – Salaries	47,651.05	47,297.16		94,948.21
Total Personnel Services – Salaries	\$47,651.05	\$47,297.16		\$94,948.21
200 Personnel Services – Employee Benefits				
210 Group Insurance – Contracted Provider	83.17	82.05		165.22
220 Social Security Contributions	3,652.77	3,626.06		7,278.83
230 PSERS Retirement Contributions	16,444.31	16,322.25		32,766.56
260 Workers' Compensation	272.39	270.42		542.81
270 Group Insurance – Self-Insurance	4,518.60	4,398.84		8,917.44
292 Health Savings Accounts	208.00	192.00		400.00
299 All Other Employee Benefits	21.84	20.16		42.00
Total Personnel Services – Employee Benefits	\$25,201.08	\$24,911.78		\$50,112.86
500 Other Purchased Services				
530 Communications	52.82	44.67		97.49
550 Printing and Binding	629.72	581.28		1,211.00
Total Other Purchased Services	\$682.54	\$625.95		\$1,308.49
600 Supplies				
610 General Supplies	287.28	265.18		552.46
630 Food	17.03	15.72		32.75
640 Books and Periodicals	292.46	269.96		562.42
Total Supplies	\$596.77	\$550.86		\$1,147.63
800 Other Objects				
810 Dues and Fees	46.28	42.72		89.00
Total Other Objects	\$46.28	\$42.72		\$89.00
Total 2111 Supervision of Student Services – Head of Component	\$74,177.72	\$73,428.47		\$147,606.19

General Fund (10)

	<u>Elementary</u>	<u>Secondary</u>	<u>Federal</u>	<u>Total</u>
2120 Guidance Services				
100 Personnel Services – Salaries				
100 Personnel Services – Salaries	646,392.50	769,527.18		1,415,919.68
Total Personnel Services – Salaries	\$646,392.50	\$769,527.18		\$1,415,919.68
200 Personnel Services – Employee Benefits				
210 Group Insurance – Contracted Provider	1,964.70	2,425.47		4,390.17
220 Social Security Contributions	48,639.05	57,266.41		105,905.46
230 PSERS Retirement Contributions	222,790.79	263,151.70		485,942.49
260 Workers' Compensation	3,756.18	4,583.16		8,339.34
270 Group Insurance – Self-Insurance	136,440.01	154,008.28		290,448.29
292 Health Savings Accounts	6,300.00	13,800.00		20,100.00
Total Personnel Services – Employee Benefits	\$419,890.73	\$495,235.02		\$915,125.75
300 Purchased Professional and Technical Services				
329 Professional Educational Services – Other		8,794.72		8,794.72
Total Purchased Professional and Technical Services		\$8,794.72		\$8,794.72
500 Other Purchased Services				
530 Communications		272.36		272.36
Total Other Purchased Services		\$272.36		\$272.36
600 Supplies				
610 General Supplies	490.96	629.08		1,120.04
650 Supplies & Fees – Technology Related	4,722.50	15,755.10		20,477.60
Total Supplies	\$5,213.46	\$16,384.18		\$21,597.64
800 Other Objects				
810 Dues and Fees		625.00		625.00
Total Other Objects		\$625.00		\$625.00
Total 2120 Guidance Services	\$1,071,496.69	\$1,290,838.46		\$2,362,335.15

General Fund (10)

2130 Attendance Services

Elementary

Secondary

Federal

Total

100 Personnel Services – Salaries

100 Personnel Services – Salaries

17,914.75

Total Personnel Services – Salaries

\$17,914.75

200 Personnel Services – Employee Benefits

220 Social Security Contributions

1,370.46

230 PSERS Retirement Contributions

6,182.37

Total Personnel Services – Employee Benefits

\$7,552.83

500 Other Purchased Services

580 Travel

573.61

Total Other Purchased Services

\$573.61

600 Supplies

610 General Supplies

61.39

Total Supplies

\$61.39

Total 2130 Attendance Services

\$26,102.58

General Fund (10)

	<u>Elementary</u>	<u>Secondary</u>	<u>Federal</u>	<u>Total</u>
2140 Psychological Services				
100 Personnel Services – Salaries				
100 Personnel Services – Salaries	291,675.22	183,946.54		475,621.76
Total Personnel Services – Salaries	\$291,675.22	\$183,946.54		\$475,621.76
200 Personnel Services – Employee Benefits				
210 Group Insurance – Contracted Provider	699.80	614.01		1,313.81
220 Social Security Contributions	21,921.41	13,783.66		35,705.07
230 PSERS Retirement Contributions	100,284.10	62,321.73		162,605.83
260 Workers' Compensation	1,282.98	1,134.95		2,417.93
270 Group Insurance – Self-Insurance	53,946.42	35,306.34		89,252.76
292 Health Savings Accounts	4,680.00	4,320.00		9,000.00
Total Personnel Services – Employee Benefits	\$182,814.71	\$117,480.69		\$300,295.40
300 Purchased Professional and Technical Services				
322 Professional Educational Services – lus	1,176.00			1,176.00
330 Other Professional Services	10,830.58	1,250.00		12,080.58
Total Purchased Professional and Technical Services	\$12,006.58	\$1,250.00		\$13,256.58
500 Other Purchased Services				
530 Communications	2,012.30	1,857.51		3,869.81
580 Travel	14.67			14.67
Total Other Purchased Services	\$2,026.97	\$1,857.51		\$3,884.48
600 Supplies				
610 General Supplies	3,592.32	3,315.98		6,908.30
650 Supplies & Fees – Technology Related	9,782.12	9,029.64		18,811.76
Total Supplies	\$13,374.44	\$12,345.62		\$25,720.06
Total 2140 Psychological Services	\$501,897.92	\$316,880.36		\$818,778.28

General Fund (10)

2160 Social Work Services

Elementary

Secondary

Federal

Total

100 Personnel Services – Salaries

100 Personnel Services – Salaries

123,708.00

Total Personnel Services – Salaries

\$123,708.00

200 Personnel Services – Employee Benefits

210 Group Insurance – Contracted Provider

481.16

220 Social Security Contributions

9,187.06

230 PSERS Retirement Contributions

42,691.73

260 Workers' Compensation

394.76

270 Group Insurance – Self-Insurance

31,726.56

292 Health Savings Accounts

1,800.00

Total Personnel Services – Employee Benefits

\$86,281.27

500 Other Purchased Services

580 Travel

552.98

Total Other Purchased Services

\$552.98

600 Supplies

610 General Supplies

878.69

630 Food

201.25

Total Supplies

\$1,079.94

Total 2160 Social Work Services

\$211,622.19

General Fund (10)

	<u>Elementary</u>	<u>Secondary</u>	<u>Federal</u>	<u>Total</u>
2170 Student Accounting Services				
100 Personnel Services – Salaries				
100 Personnel Services – Salaries				115,683.12
Total Personnel Services – Salaries				\$115,683.12
200 Personnel Services – Employee Benefits				
210 Group Insurance – Contracted Provider				443.11
220 Social Security Contributions				8,627.98
230 PSERS Retirement Contributions				39,798.82
260 Workers' Compensation				641.49
270 Group Insurance – Self-Insurance				39,441.50
292 Health Savings Accounts				4,000.00
Total Personnel Services – Employee Benefits				\$92,952.90
300 Purchased Professional and Technical Services				
340 Technical Services				3,800.00
Total Purchased Professional and Technical Services				\$3,800.00
600 Supplies				
610 General Supplies				87.04
650 Supplies & Fees – Technology Related				58,345.00
Total Supplies				\$58,432.04
Total 2170 Student Accounting Services				\$270,868.06

General Fund (10)

	<u>Elementary</u>	<u>Secondary</u>	<u>Federal</u>	<u>Total</u>
2190 Other Student Services				
300 <u>Purchased Professional and Technical Services</u>				
330 Other Professional Services	3,692.00	3,408.00		7,100.00
390 Other Purchased Professional and Technical Services	9,306.26	5,547.33		14,853.59
Total Purchased Professional and Technical Services	\$12,998.26	\$8,955.33		\$21,953.59
600 <u>Supplies</u>				
610 General Supplies	16.63	15.35		31.98
Total Supplies	\$16.63	\$15.35		\$31.98
Total 2190 Other Student Services	\$13,014.89	\$8,970.68		\$21,985.57

General Fund (10)

2200 Support Services – Instructional Staff

	<u>Elementary</u>	<u>Secondary</u>	<u>Federal</u>	<u>Total</u>
100 Personnel Services – Salaries				
100 Personnel Services – Salaries	1,200,783.38	982,432.97	257,105.38	2,440,321.73
Total Personnel Services – Salaries	\$1,200,783.38	\$982,432.97	\$257,105.38	\$2,440,321.73
200 Personnel Services – Employee Benefits				
210 Group Insurance – Contracted Provider	3,837.84	3,053.85	339.68	7,231.37
220 Social Security Contributions	90,483.77	74,012.11	19,437.48	183,933.36
230 PSERS Retirement Contributions	433,253.53	356,513.30	43,630.94	833,397.77
240 Tuition Reimbursement	177,269.88	144,791.00		322,060.88
250 Unemployment Compensation	132.16	121.99		254.15
260 Workers' Compensation	7,350.46	5,429.96		12,780.42
270 Group Insurance – Self-Insurance	258,701.43	229,076.49	46,320.58	534,098.50
291 Other Retirement Plans	5,000.00			5,000.00
292 Health Savings Accounts	22,572.40	15,397.60		37,970.00
299 All Other Employee Benefits	2,568.35	2,099.07		4,667.42
Total Personnel Services – Employee Benefits	\$1,001,169.82	\$830,495.37	\$109,728.68	\$1,941,393.87
300 Purchased Professional and Technical Services				
329 Professional Educational Services – Other	3,989.54	2,438.50	1,174.71	7,602.75
330 Other Professional Services			3,800.00	3,800.00
340 Technical Services	2,667.22	1,762.32		4,429.54
360 Employee Training and Development Services	2,980.00	8,519.96		11,499.96
Total Purchased Professional and Technical Services	\$9,636.76	\$12,720.78	\$4,974.71	\$27,332.25
400 Purchased Property Services				
430 Repairs and Maintenance Services	23,781.03	22,421.59		46,202.62
Total Purchased Property Services	\$23,781.03	\$22,421.59		\$46,202.62
500 Other Purchased Services				
530 Communications	15,584.30	14,392.32		29,976.62
580 Travel	2,103.95	1,567.32		3,671.27
Total Other Purchased Services	\$17,688.25	\$15,959.64		\$33,647.89
600 Supplies				
610 General Supplies	56,069.39	50,583.39	13,409.46	120,062.24
640 Books and Periodicals	18,512.51	18,296.24	410.82	37,219.57
650 Supplies & Fees – Technology Related	238,468.22	227,045.19		465,513.41
Total Supplies	\$313,050.12	\$295,924.82	\$13,820.28	\$622,795.22
700 Property				
756 Capitalized Technology Equipment– Original	149,102.97			149,102.97
Total Property	\$149,102.97			\$149,102.97
800 Other Objects				
810 Dues and Fees	1,432.48	2,555.15		3,987.63
Total Other Objects	\$1,432.48	\$2,555.15		\$3,987.63
Total 2200 Support Services – Instructional Staff	\$2,716,644.81	\$2,162,510.32	\$385,629.05	\$5,264,784.18

General Fund (10)

	<u>Elementary</u>	<u>Secondary</u>	<u>Federal</u>	<u>Total</u>
2210 Supervision of Educational Media Services				
100 Personnel Services – Salaries				
100 Personnel Services – Salaries			105,535.10	105,535.10
Total Personnel Services – Salaries			\$105,535.10	\$105,535.10
200 Personnel Services – Employee Benefits				
210 Group Insurance – Contracted Provider	89.65	82.75	117.20	289.60
220 Social Security Contributions	9.38	8.66	8,071.02	8,089.06
230 PSERS Retirement Contributions	9,469.23	8,740.83	18,210.06	36,420.12
270 Group Insurance – Self-Insurance			16,844.34	16,844.34
299 All Other Employee Benefits	529.30	488.58		1,017.88
Total Personnel Services – Employee Benefits	\$10,097.56	\$9,320.82	\$43,242.62	\$62,661.00
Total 2210 Supervision of Educational Media Services	\$10,097.56	\$9,320.82	\$148,777.72	\$168,196.10

General Fund (10)

	<u>Elementary</u>	<u>Secondary</u>	<u>Federal</u>	<u>Total</u>
2211 Supervision of Educational Media Services – Head of Component				
100 Personnel Services – Salaries				
100 Personnel Services – Salaries			105,535.10	105,535.10
Total Personnel Services – Salaries			\$105,535.10	\$105,535.10
200 Personnel Services – Employee Benefits				
210 Group Insurance – Contracted Provider	89.65	82.75	117.20	289.60
220 Social Security Contributions	9.38	8.66	8,071.02	8,089.06
230 PSERS Retirement Contributions	9,469.23	8,740.83	18,210.06	36,420.12
270 Group Insurance – Self-Insurance			16,844.34	16,844.34
299 All Other Employee Benefits	529.30	488.58		1,017.88
Total Personnel Services – Employee Benefits	\$10,097.56	\$9,320.82	\$43,242.62	\$62,661.00
Total 2211 Supervision of Educational Media Services – Head of Component	\$10,097.56	\$9,320.82	\$148,777.72	\$168,196.10

General Fund (10)

	<u>Elementary</u>	<u>Secondary</u>	<u>Federal</u>	<u>Total</u>
2220 Technology Support Services				
100 Personnel Services – Salaries				
100 Personnel Services – Salaries	322,391.75	281,802.71	151,570.28	755,764.74
Total Personnel Services – Salaries	\$322,391.75	\$281,802.71	\$151,570.28	\$755,764.74
200 Personnel Services – Employee Benefits				
210 Group Insurance – Contracted Provider	1,334.22	1,138.29	222.48	2,694.99
220 Social Security Contributions	24,047.56	20,996.68	11,366.46	56,410.70
230 PSERS Retirement Contributions	122,397.91	110,757.74	25,420.88	258,576.53
250 Unemployment Compensation	132.16	121.99		254.15
260 Workers' Compensation	1,985.65	1,468.51		3,454.16
270 Group Insurance – Self-Insurance	120,957.60	112,578.22	29,476.24	263,012.06
292 Health Savings Accounts	7,276.00	5,124.00		12,400.00
299 All Other Employee Benefits	613.60	566.40		1,180.00
Total Personnel Services – Employee Benefits	\$278,744.70	\$252,751.83	\$66,486.06	\$597,982.59
300 Purchased Professional and Technical Services				
340 Technical Services	2,667.22	1,762.32		4,429.54
Total Purchased Professional and Technical Services	\$2,667.22	\$1,762.32		\$4,429.54
400 Purchased Property Services				
430 Repairs and Maintenance Services	23,781.03	22,421.59		46,202.62
Total Purchased Property Services	\$23,781.03	\$22,421.59		\$46,202.62
500 Other Purchased Services				
530 Communications	15,495.69	14,303.71		29,799.40
580 Travel	1,651.46	1,524.42		3,175.88
Total Other Purchased Services	\$17,147.15	\$15,828.13		\$32,975.28
600 Supplies				
610 General Supplies	53,008.86	48,647.59		101,656.45
650 Supplies & Fees – Technology Related	173,312.23	158,115.25		331,427.48
Total Supplies	\$226,321.09	\$206,762.84		\$433,083.93
700 Property				
756 Capitalized Technology Equipment – Original	149,102.97			149,102.97
Total Property	\$149,102.97			\$149,102.97
800 Other Objects				
810 Dues and Fees	537.49	1,876.15		2,413.64
Total Other Objects	\$537.49	\$1,876.15		\$2,413.64
Total 2220 Technology Support Services	\$1,020,693.40	\$783,205.57	\$218,056.34	\$2,021,955.31

General Fund (10)

	<u>Elementary</u>	<u>Secondary</u>	<u>Federal</u>	<u>Total</u>
2250 School Library Services				
100 Personnel Services – Salaries				
100 Personnel Services – Salaries	387,942.22	192,587.46		580,529.68
Total Personnel Services – Salaries	\$387,942.22	\$192,587.46		\$580,529.68
200 Personnel Services – Employee Benefits				
210 Group Insurance – Contracted Provider	1,079.92	491.84		1,571.76
220 Social Security Contributions	29,161.70	14,691.44		43,853.14
230 PSERS Retirement Contributions	132,915.55	64,132.69		197,048.24
260 Workers' Compensation	2,220.54	1,184.29		3,404.83
270 Group Insurance – Self-Insurance	53,059.52	23,585.52		76,645.04
291 Other Retirement Plans	5,000.00			5,000.00
292 Health Savings Accounts	6,300.00	2,700.00		9,000.00
Total Personnel Services – Employee Benefits	\$229,737.23	\$106,785.78		\$336,523.01
300 Purchased Professional and Technical Services				
329 Professional Educational Services – Other	3,989.54	2,438.50		6,428.04
Total Purchased Professional and Technical Services	\$3,989.54	\$2,438.50		\$6,428.04
600 Supplies				
610 General Supplies	2,597.78	1,510.45		4,108.23
640 Books and Periodicals	15,142.18	16,227.31		31,369.49
650 Supplies & Fees – Technology Related	30,542.59	35,902.14		66,444.73
Total Supplies	\$48,282.55	\$53,639.90		\$101,922.45
Total 2250 School Library Services	\$669,951.54	\$355,451.64		\$1,025,403.18

General Fund (10)

2260 Instruction and Curriculum Development Services

	<u>Elementary</u>	<u>Secondary</u>	<u>Federal</u>	<u>Total</u>
100 Personnel Services – Salaries				
100 Personnel Services – Salaries	484,609.06	502,869.68		987,478.74
Total Personnel Services – Salaries	\$484,609.06	\$502,869.68		\$987,478.74
200 Personnel Services – Employee Benefits				
210 Group Insurance – Contracted Provider	1,334.05	1,340.97		2,675.02
220 Social Security Contributions	36,823.51	37,925.71		74,749.22
230 PSERS Retirement Contributions	166,455.36	171,096.80		337,552.16
260 Workers' Compensation	3,092.95	2,729.79		5,822.74
270 Group Insurance – Self-Insurance	84,684.31	92,912.75		177,597.06
292 Health Savings Accounts	8,996.40	7,573.60		16,570.00
299 All Other Employee Benefits	1,425.45	1,044.09		2,469.54
Total Personnel Services – Employee Benefits	\$302,812.03	\$314,623.71		\$617,435.74
500 Other Purchased Services				
530 Communications	88.61	88.61		177.22
580 Travel	452.49	42.90		495.39
Total Other Purchased Services	\$541.10	\$131.51		\$672.61
600 Supplies				
610 General Supplies	462.75	425.35		888.10
640 Books and Periodicals	1,348.89	1,656.51		3,005.40
650 Supplies & Fees – Technology Related	20,612.80	19,027.20		39,640.00
Total Supplies	\$22,424.44	\$21,109.06		\$43,533.50
800 Other Objects				
810 Dues and Fees	894.99	679.00		1,573.99
Total Other Objects	\$894.99	\$679.00		\$1,573.99
Total 2260 Instruction and Curriculum Development Services	\$811,281.62	\$839,412.96		\$1,650,694.58

General Fund (10)

2270 Instructional Staff Professional Development Services	<u>Elementary</u>	<u>Secondary</u>	<u>Federal</u>	<u>Total</u>
100 Personnel Services – Salaries				
100 Personnel Services – Salaries	5,840.35	5,173.12		11,013.47
Total Personnel Services – Salaries	\$5,840.35	\$5,173.12		\$11,013.47
200 Personnel Services – Employee Benefits				
220 Social Security Contributions	441.62	389.62		831.24
230 PSERS Retirement Contributions	2,015.48	1,785.24		3,800.72
240 Tuition Reimbursement	177,269.88	144,791.00		322,060.88
260 Workers' Compensation	51.32	47.37		98.69
Total Personnel Services – Employee Benefits	\$179,778.30	\$147,013.23		\$326,791.53
300 Purchased Professional and Technical Services				
329 Professional Educational Services – Other			1,174.71	1,174.71
330 Other Professional Services			3,800.00	3,800.00
360 Employee Training and Development Services	2,980.00	8,519.96		11,499.96
Total Purchased Professional and Technical Services	\$2,980.00	\$8,519.96	\$4,974.71	\$16,474.67
600 Supplies				
640 Books and Periodicals	2,021.44	412.42	410.82	2,844.68
650 Supplies & Fees – Technology Related	14,000.60	14,000.60		28,001.20
Total Supplies	\$16,022.04	\$14,413.02	\$410.82	\$30,845.88
Total 2270 Instructional Staff Professional Development Services	\$204,620.69	\$175,119.33	\$5,385.53	\$385,125.55

General Fund (10)

2280 Nonpublic Support Services

600 Supplies
610 General Supplies

Elementary

Secondary

Federal

Total

Total Supplies			13,409.46	13,409.46
Total 2280 Nonpublic Support Services			\$13,409.46	\$13,409.46

General Fund (10)

2300 Support Services – Administration

	<u>Elementary</u>	<u>Secondary</u>	<u>Federal</u>	<u>Total</u>
100 Personnel Services – Salaries				
100 Personnel Services – Salaries	1,264,950.40	1,122,780.75		3,019,593.05
Total Personnel Services – Salaries	\$1,264,950.40	\$1,122,780.75		\$3,019,593.05
200 Personnel Services – Employee Benefits				
210 Group Insurance – Contracted Provider	5,378.07	4,037.82		11,507.42
220 Social Security Contributions	95,491.93	84,963.61		224,365.70
230 PSERS Retirement Contributions	436,534.33	387,020.54		1,040,303.45
260 Workers' Compensation	7,253.77	6,710.93		17,369.51
270 Group Insurance – Self-Insurance	278,261.54	264,873.65		627,111.73
291 Other Retirement Plans		94,290.35		103,962.55
292 Health Savings Accounts	26,000.00	25,800.00		62,130.00
299 All Other Employee Benefits	6,097.00	6,785.10		15,433.99
Total Personnel Services – Employee Benefits	\$855,016.64	\$874,482.00		\$2,102,184.35
300 Purchased Professional and Technical Services				
310 Official / Administrative Services				124,352.42
329 Professional Educational Services – Other				12,895.29
330 Other Professional Services	21,659.74	1,290.85		247,598.95
390 Other Purchased Professional and Technical Services				1,371.52
Total Purchased Professional and Technical Services	\$21,659.74	\$1,290.85		\$386,218.18
500 Other Purchased Services				
520 Insurance – General				316.00
530 Communications	1,173.04	2,192.76		12,142.01
549 Other Advertising/Public Relations				614.72
550 Printing and Binding				5,408.76
580 Travel				455.17
Total Other Purchased Services	\$1,173.04	\$2,192.76		\$18,936.66
600 Supplies				
610 General Supplies	1,708.09	11,625.43		26,340.82
630 Food	4,066.17	313.26		6,109.41
640 Books and Periodicals	290.19	925.50		1,698.65
650 Supplies & Fees – Technology Related	108.98			8,486.90
Total Supplies	\$6,173.43	\$12,864.19		\$42,635.78
800 Other Objects				
810 Dues and Fees	2,200.00	1,279.00		31,476.03
820 Claims and Judgments Against the LEA				25,500.00
890 Miscellaneous Expenditures		400.00		400.00
Total Other Objects	\$2,200.00	\$1,679.00		\$57,376.03
Total 2300 Support Services – Administration	\$2,151,173.25	\$2,015,289.55		\$5,626,944.05

General Fund (10)

2310 Board Services

Elementary Secondary Federal Total

300	<u>Purchased Professional and Technical Services</u>				
	390 Other Purchased Professional and Technical Services				960.00
Total Purchased Professional and Technical Services					\$960.00
500	<u>Other Purchased Services</u>				
	520 Insurance – General				158.00
	549 Other Advertising/Public Relations				614.72
Total Other Purchased Services					\$772.72
600	<u>Supplies</u>				
	610 General Supplies				2,479.48
	630 Food				9.15
Total Supplies					\$2,488.63
800	<u>Other Objects</u>				
	810 Dues and Fees				17,054.57
	820 Claims and Judgments Against the LEA				25,500.00
Total Other Objects					\$42,554.57
Total 2310 Board Services					\$46,775.92

General Fund (10)

2330 Tax Assessment and Collection Services

Elementary Secondary Federal Total

100	<u>Personnel Services – Salaries</u>			
	100 Personnel Services – Salaries			27,662.67
Total Personnel Services – Salaries				\$27,662.67
200	<u>Personnel Services – Employee Benefits</u>			
	210 Group Insurance – Contracted Provider			26.64
	220 Social Security Contributions			2,027.96
	230 PSERS Retirement Contributions			9,189.19
	260 Workers' Compensation			148.04
	270 Group Insurance – Self-Insurance			7,173.66
	292 Health Savings Accounts			1,000.00
Total Personnel Services – Employee Benefits				\$19,565.49
300	<u>Purchased Professional and Technical Services</u>			
	310 Official / Administrative Services			124,352.42
Total Purchased Professional and Technical Services				\$124,352.42
500	<u>Other Purchased Services</u>			
	520 Insurance – General			158.00
	530 Communications			5,956.21
	550 Printing and Binding			5,408.76
Total Other Purchased Services				\$11,522.97
600	<u>Supplies</u>			
	650 Supplies & Fees – Technology Related			7,990.00
Total Supplies				\$7,990.00
800	<u>Other Objects</u>			
	810 Dues and Fees			5,042.51
Total Other Objects				\$5,042.51
Total 2330 Tax Assessment and Collection Services				\$196,136.06

General Fund (10)

2350 Legal and Accounting Services

Elementary

Secondary

Federal

Total

300 Purchased Professional and Technical Services

330 Other Professional Services

224,648.36

Total Purchased Professional and Technical Services

\$224,648.36

Total 2350 Legal and Accounting Services

\$224,648.36

General Fund (10)

2360 Office of the Superintendent / Executive Director Services

	<u>Elementary</u>	<u>Secondary</u>	<u>Federal</u>	<u>Total</u>
100 Personnel Services – Salaries				
100 Personnel Services – Salaries				569,152.64
Total Personnel Services – Salaries				\$569,152.64
200 Personnel Services – Employee Benefits				
210 Group Insurance – Contracted Provider				1,931.81
220 Social Security Contributions				39,205.04
230 PSERS Retirement Contributions				196,414.68
260 Workers' Compensation				3,256.77
270 Group Insurance – Self-Insurance				70,036.84
291 Other Retirement Plans				9,672.20
292 Health Savings Accounts				8,330.00
299 All Other Employee Benefits				2,009.39
Total Personnel Services – Employee Benefits				\$330,856.73
500 Other Purchased Services				
530 Communications	173.04	159.72		332.76
580 Travel				455.17
Total Other Purchased Services	\$173.04	\$159.72		\$787.93
600 Supplies				
610 General Supplies				1,246.08
630 Food				1,720.83
640 Books and Periodicals				482.96
650 Supplies & Fees – Technology Related				387.92
Total Supplies				\$3,837.79
800 Other Objects				
810 Dues and Fees				5,899.95
Total Other Objects				\$5,899.95
Total 2360 Office of the Superintendent / Executive Director Services	\$173.04	\$159.72		\$910,535.04

General Fund (10)

	<u>Elementary</u>	<u>Secondary</u>	<u>Federal</u>	<u>Total</u>
2370 Community Relations Services				
100 Personnel Services – Salaries				
100 Personnel Services – Salaries				35,046.59
Total Personnel Services – Salaries				\$35,046.59
200 Personnel Services – Employee Benefits				
210 Group Insurance – Contracted Provider				133.08
220 Social Security Contributions				2,677.16
230 PSERS Retirement Contributions				11,144.71
270 Group Insurance – Self-Insurance				6,766.04
292 Health Savings Accounts				1,000.00
299 All Other Employee Benefits				30.00
Total Personnel Services – Employee Benefits				\$21,750.99
Total 2370 Community Relations Services				\$56,797.58

General Fund (10)

2380 Office of the Principal Services

100 Personnel Services – Salaries

	<u>Elementary</u>	<u>Secondary</u>	<u>Federal</u>	<u>Total</u>
100 Personnel Services – Salaries	1,264,950.40	1,122,780.75		2,387,731.15
Total Personnel Services – Salaries	\$1,264,950.40	\$1,122,780.75		\$2,387,731.15

200 Personnel Services – Employee Benefits

210 Group Insurance – Contracted Provider	5,378.07	4,037.82		9,415.89
220 Social Security Contributions	95,491.93	84,963.61		180,455.54
230 PSERS Retirement Contributions	436,534.33	387,020.54		823,554.87
260 Workers' Compensation	7,253.77	6,710.93		13,964.70
270 Group Insurance – Self-Insurance	278,261.54	264,873.65		543,135.19
291 Other Retirement Plans		94,290.35		94,290.35
292 Health Savings Accounts	26,000.00	25,800.00		51,800.00
299 All Other Employee Benefits	6,097.00	6,785.10		12,882.10
Total Personnel Services – Employee Benefits	\$855,016.64	\$874,482.00		\$1,729,498.64

300 Purchased Professional and Technical Services

330 Other Professional Services	21,659.74	1,290.85		22,950.59
Total Purchased Professional and Technical Services	\$21,659.74	\$1,290.85		\$22,950.59

500 Other Purchased Services

530 Communications	1,000.00	2,033.04		3,033.04
Total Other Purchased Services	\$1,000.00	\$2,033.04		\$3,033.04

600 Supplies

610 General Supplies	1,708.09	11,625.43		13,333.52
630 Food	4,066.17	313.26		4,379.43
640 Books and Periodicals	290.19	925.50		1,215.69
650 Supplies & Fees – Technology Related	108.98			108.98
Total Supplies	\$6,173.43	\$12,864.19		\$19,037.62

800 Other Objects

810 Dues and Fees	2,200.00	1,279.00		3,479.00
890 Miscellaneous Expenditures		400.00		400.00
Total Other Objects	\$2,200.00	\$1,679.00		\$3,879.00

Total 2380 Office of the Principal Services

	\$2,151,000.21	\$2,015,129.83		\$4,166,130.04
--	-----------------------	-----------------------	--	-----------------------

General Fund (10)

2390 Other Administration Services

Elementary

Secondary

Federal

Total

200 Personnel Services – Employee Benefits

299 All Other Employee Benefits

512.50

Total Personnel Services – Employee Benefits

\$512.50

300 Purchased Professional and Technical Services

329 Professional Educational Services – Other

12,895.29

390 Other Purchased Professional and Technical Services

411.52

Total Purchased Professional and Technical Services

\$13,306.81

500 Other Purchased Services

530 Communications

2,820.00

Total Other Purchased Services

\$2,820.00

600 Supplies

610 General Supplies

9,281.74

Total Supplies

\$9,281.74

Total 2390 Other Administration Services

\$25,921.05

General Fund (10)

	<u>Elementary</u>	<u>Secondary</u>	<u>Federal</u>	<u>Total</u>
2400 Support Services – Pupil Health				
100 Personnel Services – Salaries				
100 Personnel Services – Salaries			63,930.90	622,087.89
Total Personnel Services – Salaries			\$63,930.90	\$622,087.89
200 Personnel Services – Employee Benefits				
210 Group Insurance – Contracted Provider			44.40	1,800.22
220 Social Security Contributions			4,859.71	46,620.79
230 PSERS Retirement Contributions			10,965.62	204,267.61
250 Unemployment Compensation				675.36
260 Workers' Compensation				3,108.76
270 Group Insurance – Self-Insurance			8,461.68	115,507.42
292 Health Savings Accounts				4,500.00
299 All Other Employee Benefits				399.00
Total Personnel Services – Employee Benefits			\$24,331.41	\$376,879.16
300 Purchased Professional and Technical Services				
322 Professional Educational Services – Ius				19,630.80
330 Other Professional Services				315,329.55
Total Purchased Professional and Technical Services				\$334,960.35
400 Purchased Property Services				
430 Repairs and Maintenance Services				290.00
Total Purchased Property Services				\$290.00
500 Other Purchased Services				
580 Travel				40.26
Total Other Purchased Services				\$40.26
600 Supplies				
610 General Supplies			107,912.24	117,788.22
Total Supplies			\$107,912.24	\$117,788.22
Total 2400 Support Services – Pupil Health			\$196,174.55	\$1,452,045.88

General Fund (10)

2420 Medical Services

	<u>Elementary</u>	<u>Secondary</u>	<u>Federal</u>	<u>Total</u>
100 Personnel Services – Salaries				
100 Personnel Services – Salaries				70,761.00
Total Personnel Services – Salaries				\$70,761.00
200 Personnel Services – Employee Benefits				
210 Group Insurance – Contracted Provider				53.28
220 Social Security Contributions				5,351.90
230 PSERS Retirement Contributions				24,248.25
270 Group Insurance – Self-Insurance				8,416.20
Total Personnel Services – Employee Benefits				\$38,069.63
300 Purchased Professional and Technical Services				
322 Professional Educational Services – Ius				19,630.80
330 Other Professional Services				171,895.19
Total Purchased Professional and Technical Services				\$191,525.99
600 Supplies				
610 General Supplies			107,912.24	109,766.25
Total Supplies			\$107,912.24	\$109,766.25
Total 2420 Medical Services			\$107,912.24	\$410,122.87

General Fund (10)

2440 Nursing Services

	<u>Elementary</u>	<u>Secondary</u>	<u>Federal</u>	<u>Total</u>
100 Personnel Services – Salaries				
100 Personnel Services – Salaries			63,930.90	551,326.89
Total Personnel Services – Salaries			\$63,930.90	\$551,326.89
200 Personnel Services – Employee Benefits				
210 Group Insurance – Contracted Provider			44.40	1,746.94
220 Social Security Contributions			4,859.71	41,268.89
230 PSERS Retirement Contributions			10,965.62	180,019.36
250 Unemployment Compensation				675.36
260 Workers' Compensation				3,108.76
270 Group Insurance – Self-Insurance			8,461.68	107,091.22
292 Health Savings Accounts				4,500.00
299 All Other Employee Benefits				399.00
Total Personnel Services – Employee Benefits			\$24,331.41	\$338,809.53
300 Purchased Professional and Technical Services				
330 Other Professional Services				143,434.36
Total Purchased Professional and Technical Services				\$143,434.36
400 Purchased Property Services				
430 Repairs and Maintenance Services				290.00
Total Purchased Property Services				\$290.00
500 Other Purchased Services				
580 Travel				40.26
Total Other Purchased Services				\$40.26
600 Supplies				
610 General Supplies				8,014.10
Total Supplies				\$8,014.10
Total 2440 Nursing Services			\$88,262.31	\$1,041,915.14

LEA : 113364503 Manheim Township SD

Printed 10/29/2021 8:07:52 AM

General Fund (10)

2450 Nonpublic Health Services

Elementary

Secondary

Federal

Total

600 Supplies

610 General Supplies

7.87

Total Supplies

\$7.87

Total 2450 Nonpublic Health Services

\$7.87

General Fund (10)

	<u>Elementary</u>	<u>Secondary</u>	<u>Federal</u>	<u>Total</u>
2500 Support Services – Business				
100 Personnel Services – Salaries				
100 Personnel Services – Salaries				388,405.91
Total Personnel Services – Salaries				\$388,405.91
200 Personnel Services – Employee Benefits				
210 Group Insurance – Contracted Provider				1,009.64
220 Social Security Contributions				29,380.30
230 PSERS Retirement Contributions				134,172.08
250 Unemployment Compensation				572.05
260 Workers' Compensation				1,776.44
270 Group Insurance – Self-Insurance				70,532.96
292 Health Savings Accounts				9,000.00
299 All Other Employee Benefits				2,421.99
Total Personnel Services – Employee Benefits				\$248,865.46
300 Purchased Professional and Technical Services				
330 Other Professional Services				10,172.53
390 Other Purchased Professional and Technical Services				35,817.69
Total Purchased Professional and Technical Services				\$45,990.22
500 Other Purchased Services				
530 Communications				6,015.38
Total Other Purchased Services				\$6,015.38
600 Supplies				
610 General Supplies				4,690.82
650 Supplies & Fees – Technology Related				39,385.69
Total Supplies				\$44,076.51
800 Other Objects				
810 Dues and Fees				20,831.85
Total Other Objects				\$20,831.85
Total 2500 Support Services – Business				\$754,185.33

General Fund (10)

2510 Fiscal Services

Elementary Secondary Federal Total

100	<u>Personnel Services – Salaries</u>				
	100 Personnel Services – Salaries				280,935.28
Total Personnel Services – Salaries					\$280,935.28
200	<u>Personnel Services – Employee Benefits</u>				
	210 Group Insurance – Contracted Provider				854.43
	220 Social Security Contributions				21,297.88
	230 PSERS Retirement Contributions				97,084.00
	250 Unemployment Compensation				572.05
	260 Workers' Compensation				1,184.29
	270 Group Insurance – Self-Insurance				62,798.18
	292 Health Savings Accounts				8,000.00
	299 All Other Employee Benefits				2,421.99
Total Personnel Services – Employee Benefits					\$194,212.82
300	<u>Purchased Professional and Technical Services</u>				
	390 Other Purchased Professional and Technical Services				31,438.03
Total Purchased Professional and Technical Services					\$31,438.03
500	<u>Other Purchased Services</u>				
	530 Communications				6,015.38
Total Other Purchased Services					\$6,015.38
600	<u>Supplies</u>				
	610 General Supplies				4,651.36
	650 Supplies & Fees – Technology Related				39,385.69
Total Supplies					\$44,037.05
800	<u>Other Objects</u>				
	810 Dues and Fees				20,831.85
Total Other Objects					\$20,831.85
Total 2510 Fiscal Services					\$577,470.41

General Fund (10)

2511 Supervision of Fiscal Services - Head of Component

Elementary

Secondary

Federal

Total

100 Personnel Services – Salaries

100 Personnel Services – Salaries

94,259.59

Total Personnel Services – Salaries

\$94,259.59

200 Personnel Services – Employee Benefits

210 Group Insurance – Contracted Provider

476.19

220 Social Security Contributions

7,468.10

230 PSERS Retirement Contributions

32,453.41

250 Unemployment Compensation

572.05

260 Workers' Compensation

592.14

270 Group Insurance – Self-Insurance

11,026.74

292 Health Savings Accounts

2,000.00

299 All Other Employee Benefits

1,460.00

Total Personnel Services – Employee Benefits

\$56,048.63

800 Other Objects

810 Dues and Fees

442.60

Total Other Objects

\$442.60

Total 2511 Supervision of Fiscal Services - Head of Component

\$150,750.82

General Fund (10)

2513 Receiving and Disbursing Funds Services	<u>Elementary</u>	<u>Secondary</u>	<u>Federal</u>	<u>Total</u>
100 Personnel Services – Salaries				
100 Personnel Services – Salaries				5,811.16
Total Personnel Services – Salaries				\$5,811.16
200 Personnel Services – Employee Benefits				
220 Social Security Contributions				430.98
230 PSERS Retirement Contributions				1,929.88
260 Workers' Compensation				49.35
Total Personnel Services – Employee Benefits				\$2,410.21
800 Other Objects				
810 Dues and Fees				3,306.13
Total Other Objects				\$3,306.13
Total 2513 Receiving and Disbursing Funds Services				\$11,527.50

General Fund (10)

2514 Payroll Services

Elementary

Secondary

Federal

Total

100 Personnel Services – Salaries

100 Personnel Services – Salaries

83,840.24

Total Personnel Services – Salaries

\$83,840.24

200 Personnel Services – Employee Benefits

210 Group Insurance – Contracted Provider

210.96

220 Social Security Contributions

6,086.71

230 PSERS Retirement Contributions

28,933.31

270 Group Insurance – Self-Insurance

22,456.40

292 Health Savings Accounts

3,000.00

299 All Other Employee Benefits

411.83

Total Personnel Services – Employee Benefits

\$61,099.21

600 Supplies

610 General Supplies

389.60

Total Supplies

\$389.60

Total 2514 Payroll Services

\$145,329.05

General Fund (10)

	<u>Elementary</u>	<u>Secondary</u>	<u>Federal</u>	<u>Total</u>
2515 Financial Accounting Services				
100 Personnel Services – Salaries				
100 Personnel Services – Salaries				97,024.29
Total Personnel Services – Salaries				\$97,024.29
200 Personnel Services – Employee Benefits				
210 Group Insurance – Contracted Provider				167.28
220 Social Security Contributions				7,312.09
230 PSERS Retirement Contributions				33,767.40
260 Workers' Compensation				542.80
270 Group Insurance – Self-Insurance				29,315.04
292 Health Savings Accounts				3,000.00
299 All Other Employee Benefits				550.16
Total Personnel Services – Employee Benefits				\$74,654.77
500 Other Purchased Services				
530 Communications				6,015.38
Total Other Purchased Services				\$6,015.38
600 Supplies				
610 General Supplies				4,002.84
650 Supplies & Fees – Technology Related				39,385.69
Total Supplies				\$43,388.53
800 Other Objects				
810 Dues and Fees				331.59
Total Other Objects				\$331.59
Total 2515 Financial Accounting Services				\$221,414.56

General Fund (10)

2519 Other Fiscal Services

Elementary

Secondary

Federal

Total

300 Purchased Professional and Technical Services

390 Other Purchased Professional and Technical Services

31,438.03

Total Purchased Professional and Technical Services

\$31,438.03

600 Supplies

610 General Supplies

258.92

Total Supplies

\$258.92

800 Other Objects

810 Dues and Fees

16,751.53

Total Other Objects

\$16,751.53

Total 2519 Other Fiscal Services

\$48,448.48

General Fund (10)

2520 Purchasing Services

Elementary

Secondary

Federal

Total

100 Personnel Services – Salaries

100 Personnel Services – Salaries

52,185.64

Total Personnel Services – Salaries

\$52,185.64

200 Personnel Services – Employee Benefits

210 Group Insurance – Contracted Provider

105.24

220 Social Security Contributions

3,853.15

230 PSERS Retirement Contributions

18,009.27

260 Workers' Compensation

296.07

270 Group Insurance – Self-Insurance

7,734.78

292 Health Savings Accounts

1,000.00

Total Personnel Services – Employee Benefits

\$30,998.51

Total 2520 Purchasing Services

\$83,184.15

General Fund (10)

	<u>Elementary</u>	<u>Secondary</u>	<u>Federal</u>	<u>Total</u>
2530 Warehousing and Distributing Services				
100 Personnel Services – Salaries				
100 Personnel Services – Salaries				24,634.64
Total Personnel Services – Salaries				\$24,634.64
200 Personnel Services – Employee Benefits				
210 Group Insurance – Contracted Provider				49.97
220 Social Security Contributions				1,884.55
230 PSERS Retirement Contributions				8,501.36
260 Workers' Compensation				148.04
Total Personnel Services – Employee Benefits				\$10,583.92
300 Purchased Professional and Technical Services				
330 Other Professional Services				7,430.02
Total Purchased Professional and Technical Services				\$7,430.02
600 Supplies				
610 General Supplies				39.46
Total Supplies				\$39.46
Total 2530 Warehousing and Distributing Services				\$42,688.04

General Fund (10)

2540 Printing, Publishing and Duplicating Services

Elementary

Secondary

Federal

Total

300 Purchased Professional and Technical Services

330 Other Professional Services

669.59

390 Other Purchased Professional and Technical Services

4,379.66

Total Purchased Professional and Technical Services

\$5,049.25

Total 2540 Printing, Publishing and Duplicating Services

\$5,049.25

General Fund (10)

	<u>Elementary</u>	<u>Secondary</u>	<u>Federal</u>	<u>Total</u>
2590 Other Support Services – Business				
100 Personnel Services – Salaries				
100 Personnel Services – Salaries				30,650.35
Total Personnel Services – Salaries				\$30,650.35
200 Personnel Services – Employee Benefits				
220 Social Security Contributions				2,344.72
230 PSERS Retirement Contributions				10,577.45
260 Workers’ Compensation				148.04
Total Personnel Services – Employee Benefits				\$13,070.21
300 Purchased Professional and Technical Services				
330 Other Professional Services				2,072.92
Total Purchased Professional and Technical Services				\$2,072.92
Total 2590 Other Support Services – Business				\$45,793.48

LEA : 113364503 Manheim Township SD

Printed 10/29/2021 8:07:52 AM

General Fund (10)

2600 Operation and Maintenance of Plant Services

Elementary Secondary Federal Total

100 Personnel Services – Salaries

100 Personnel Services – Salaries 2,139,062.24

Total Personnel Services – Salaries \$2,139,062.24

200 Personnel Services – Employee Benefits

210 Group Insurance – Contracted Provider 8,373.28

220 Social Security Contributions 159,674.07

230 PSERS Retirement Contributions 723,894.12

250 Unemployment Compensation 3,770.32

260 Workers' Compensation 13,076.48

270 Group Insurance – Self-Insurance 731,120.59

292 Health Savings Accounts 41,200.00

299 All Other Employee Benefits 842.40

Total Personnel Services – Employee Benefits \$1,681,951.26

300 Purchased Professional and Technical Services

330 Other Professional Services 8,570.99

340 Technical Services 18,748.55

350 Security / Safety Services 154,749.00

Total Purchased Professional and Technical Services \$182,068.54

400 Purchased Property Services

410 Cleaning Services 572,277.04

420 Utility Services 100,211.68

430 Repairs and Maintenance Services 729,955.43

440 Rentals 18,395.75

450 Construction Services 8,231.94

460 Extermination Services 6,925.72

490 Other Purchased Property Services 100.00

Total Purchased Property Services \$1,436,097.56

500 Other Purchased Services

523 General Property and Liability Insurance 399,994.34

530 Communications 89,788.29

549 Other Advertising/Public Relations 648.84

550 Printing and Binding 311.56

580 Travel 807.93

Total Other Purchased Services \$491,550.96

600 Supplies

610 General Supplies 347,674.58 230,250.72 332,360.46 910,285.76

620 Energy 1,327,395.69

630 Food 496.84

640 Books and Periodicals 143.05

650 Supplies & Fees – Technology Related 9,875.00 19,819.76

Total Supplies \$347,674.58 \$230,250.72 \$342,235.46 \$2,258,141.10

700 Property

752 Capital Equipment – Original and Additional 21,893.34

General Fund (10)

2600 Operation and Maintenance of Plant Services	<u>Elementary</u>	<u>Secondary</u>	<u>Federal</u>	<u>Total</u>
Total Property				\$21,893.34
800 Other Objects				
810 Dues and Fees				911.08
Total Other Objects				\$911.08
Total 2600 Operation and Maintenance of Plant Services	\$347,674.58	\$230,250.72	\$342,235.46	\$8,211,676.08

General Fund (10)

2610 Supervision of Operation and Maintenance of Plant Services

Elementary

Secondary

Federal

Total

100 Personnel Services – Salaries

100 Personnel Services – Salaries

227,081.03

Total Personnel Services – Salaries

\$227,081.03

200 Personnel Services – Employee Benefits

210 Group Insurance – Contracted Provider

682.41

220 Social Security Contributions

17,316.47

230 PSERS Retirement Contributions

75,961.87

260 Workers' Compensation

1,332.32

270 Group Insurance – Self-Insurance

31,711.80

292 Health Savings Accounts

5,000.00

299 All Other Employee Benefits

842.40

Total Personnel Services – Employee Benefits

\$132,847.27

Total 2610 Supervision of Operation and Maintenance of Plant Services

\$359,928.30

General Fund (10)

2611 Supervision of Operation and Maintenance of Plant Services – Head of Component

Elementary

Secondary

Federal

Total

100 Personnel Services – Salaries

100 Personnel Services – Salaries

151,668.93

Total Personnel Services – Salaries

\$151,668.93

200 Personnel Services – Employee Benefits

210 Group Insurance – Contracted Provider

387.56

220 Social Security Contributions

11,518.14

230 PSERS Retirement Contributions

49,937.15

260 Workers' Compensation

937.56

270 Group Insurance – Self-Insurance

16,362.75

292 Health Savings Accounts

3,000.00

Total Personnel Services – Employee Benefits

\$82,143.16

Total 2611 Supervision of Operation and Maintenance of Plant Services – Head of Component

\$233,812.09

General Fund (10)

2619 Supervision of Operation and Maintenance of Plant Services – All Other Supervision

Elementary

Secondary

Federal

Total

100 Personnel Services – Salaries

100 Personnel Services – Salaries

75,412.10

Total Personnel Services – Salaries

\$75,412.10

200 Personnel Services – Employee Benefits

210 Group Insurance – Contracted Provider

294.85

220 Social Security Contributions

5,798.33

230 PSERS Retirement Contributions

26,024.72

260 Workers' Compensation

394.76

270 Group Insurance – Self-Insurance

15,349.05

292 Health Savings Accounts

2,000.00

299 All Other Employee Benefits

842.40

Total Personnel Services – Employee Benefits

\$50,704.11

Total 2619 Supervision of Operation and Maintenance of Plant Services – All Other Supervision

\$126,116.21

General Fund (10)

	<u>Elementary</u>	<u>Secondary</u>	<u>Federal</u>	<u>Total</u>
2620 Operation of Buildings Services				
100 Personnel Services – Salaries				
100 Personnel Services – Salaries				1,636,797.27
Total Personnel Services – Salaries				\$1,636,797.27
200 Personnel Services – Employee Benefits				
210 Group Insurance – Contracted Provider				6,576.50
220 Social Security Contributions				121,681.77
230 PSERS Retirement Contributions				563,815.34
250 Unemployment Compensation				3,586.98
260 Workers' Compensation				9,474.28
270 Group Insurance – Self-Insurance				652,403.34
292 Health Savings Accounts				33,000.00
Total Personnel Services – Employee Benefits				\$1,390,538.21
300 Purchased Professional and Technical Services				
340 Technical Services				18,748.55
350 Security / Safety Services				11,184.00
Total Purchased Professional and Technical Services				\$29,932.55
400 Purchased Property Services				
410 Cleaning Services				131,169.54
420 Utility Services				100,211.68
430 Repairs and Maintenance Services				659,226.30
440 Rentals				14,741.75
450 Construction Services				8,231.94
460 Extermination Services				6,925.72
490 Other Purchased Property Services				100.00
Total Purchased Property Services				\$920,606.93
500 Other Purchased Services				
523 General Property and Liability Insurance				399,994.34
530 Communications				89,788.29
549 Other Advertising/Public Relations				648.84
550 Printing and Binding				311.56
Total Other Purchased Services				\$490,743.03
600 Supplies				
610 General Supplies	340,406.44	223,450.70	332,360.46	896,217.60
620 Energy				1,318,906.45
630 Food				496.84
650 Supplies & Fees – Technology Related				3,834.85
Total Supplies	\$340,406.44	\$223,450.70	\$332,360.46	\$2,219,455.74
700 Property				
752 Capital Equipment – Original and Additional				16,445.34
Total Property				\$16,445.34
800 Other Objects				

General Fund (10)

2620 Operation of Buildings Services

Elementary

Secondary

Federal

Total

800 Other Objects

810 Dues and Fees

141.58

Total Other Objects

\$141.58

Total 2620 Operation of Buildings Services

\$340,406.44

\$223,450.70

\$332,360.46

\$6,704,660.65

General Fund (10)

	<u>Elementary</u>	<u>Secondary</u>	<u>Federal</u>	<u>Total</u>
2630 Care and Upkeep of Grounds Services				
300 <u>Purchased Professional and Technical Services</u>				
330 Other Professional Services				400.00
Total Purchased Professional and Technical Services				\$400.00
400 <u>Purchased Property Services</u>				
410 Cleaning Services				441,107.50
430 Repairs and Maintenance Services				5,993.23
440 Rentals				3,654.00
Total Purchased Property Services				\$450,754.73
600 <u>Supplies</u>				
610 General Supplies	1,671.32	1,773.16		3,444.48
Total Supplies	\$1,671.32	\$1,773.16		\$3,444.48
Total 2630 Care and Upkeep of Grounds Services	\$1,671.32	\$1,773.16		\$454,599.21

General Fund (10)

	<u>Elementary</u>	<u>Secondary</u>	<u>Federal</u>	<u>Total</u>
2640 Care and Upkeep of Equipment Services				
400 <u>Purchased Property Services</u>				
430 Repairs and Maintenance Services				54,175.43
Total Purchased Property Services				\$54,175.43
600 <u>Supplies</u>				
610 General Supplies	3,222.91	2,987.96		6,210.87
Total Supplies	\$3,222.91	\$2,987.96		\$6,210.87
Total 2640 Care and Upkeep of Equipment Services	\$3,222.91	\$2,987.96		\$60,386.30

General Fund (10)

	<u>Elementary</u>	<u>Secondary</u>	<u>Federal</u>	<u>Total</u>
2650 Vehicle Operation and Maintenance Services (Other Than Student Transportation Vehicles)				
400 Purchased Property Services				
430 Repairs and Maintenance Services				9,566.97
Total Purchased Property Services				\$9,566.97
600 Supplies				
610 General Supplies	546.17	504.16		1,050.33
620 Energy				8,489.24
Total Supplies	\$546.17	\$504.16		\$9,539.57
Total 2650 Vehicle Operation and Maintenance Services (Other Than Student Transportation Vehicles)	\$546.17	\$504.16		\$19,106.54

General Fund (10)

	<u>Elementary</u>	<u>Secondary</u>	<u>Federal</u>	<u>Total</u>
2660 Safety and Security Services				
100 Personnel Services – Salaries				
100 Personnel Services – Salaries				275,183.94
Total Personnel Services – Salaries				\$275,183.94
200 Personnel Services – Employee Benefits				
210 Group Insurance – Contracted Provider				1,114.37
220 Social Security Contributions				20,675.83
230 PSERS Retirement Contributions				84,116.91
250 Unemployment Compensation				183.34
260 Workers' Compensation				2,269.88
270 Group Insurance – Self-Insurance				47,005.45
292 Health Savings Accounts				3,200.00
Total Personnel Services – Employee Benefits				\$158,565.78
300 Purchased Professional and Technical Services				
330 Other Professional Services				8,170.99
350 Security / Safety Services				143,565.00
Total Purchased Professional and Technical Services				\$151,735.99
400 Purchased Property Services				
430 Repairs and Maintenance Services				993.50
Total Purchased Property Services				\$993.50
500 Other Purchased Services				
580 Travel				807.93
Total Other Purchased Services				\$807.93
600 Supplies				
610 General Supplies	1,827.74	1,534.74		3,362.48
640 Books and Periodicals				143.05
650 Supplies & Fees – Technology Related			9,875.00	15,984.91
Total Supplies	\$1,827.74	\$1,534.74	\$9,875.00	\$19,490.44
700 Property				
752 Capital Equipment – Original and Additional				5,448.00
Total Property				\$5,448.00
800 Other Objects				
810 Dues and Fees				769.50
Total Other Objects				\$769.50
Total 2660 Safety and Security Services	\$1,827.74	\$1,534.74	\$9,875.00	\$612,995.08

General Fund (10)

2700 Student Transportation Services

Elementary Secondary Federal Total

100 Personnel Services – Salaries

100 Personnel Services – Salaries 94,029.56

Total Personnel Services – Salaries \$94,029.56

200 Personnel Services – Employee Benefits

210 Group Insurance – Contracted Provider 307.20

220 Social Security Contributions 7,262.29

230 PSERS Retirement Contributions 32,449.57

260 Workers' Compensation 493.46

270 Group Insurance – Self-Insurance 17,637.91

292 Health Savings Accounts 2,800.00

299 All Other Employee Benefits 2,168.99

Total Personnel Services – Employee Benefits \$63,119.42

300 Purchased Professional and Technical Services

330 Other Professional Services 632.94

Total Purchased Professional and Technical Services \$632.94

400 Purchased Property Services

430 Repairs and Maintenance Services 5,503.15

440 Rentals 37,150.68

Total Purchased Property Services \$42,653.83

500 Other Purchased Services

513 Contracted Carriers 3,670,206.80

516 Student Transportation Services From the IU 122,099.89

530 Communications 134.12

580 Travel 344.69

Total Other Purchased Services \$3,792,785.50

600 Supplies

610 General Supplies 374.95

620 Energy 2,199.14

630 Food 190.00

650 Supplies & Fees – Technology Related 10,291.97

Total Supplies \$13,056.06

800 Other Objects

810 Dues and Fees 1,396.02

Total Other Objects \$1,396.02

Total 2700 Student Transportation Services \$4,007,673.33

General Fund (10)

2710 Supervision of Student Transportation Services

Elementary

Secondary

Federal

Total

100 Personnel Services – Salaries

100 Personnel Services – Salaries

84,440.00

Total Personnel Services – Salaries

\$84,440.00

200 Personnel Services – Employee Benefits

210 Group Insurance – Contracted Provider

295.26

220 Social Security Contributions

6,510.33

230 PSERS Retirement Contributions

29,140.21

260 Workers' Compensation

444.11

270 Group Insurance – Self-Insurance

15,804.25

292 Health Savings Accounts

2,500.00

299 All Other Employee Benefits

1,846.64

Total Personnel Services – Employee Benefits

\$56,540.80

300 Purchased Professional and Technical Services

330 Other Professional Services

632.94

Total Purchased Professional and Technical Services

\$632.94

500 Other Purchased Services

530 Communications

134.12

580 Travel

344.69

Total Other Purchased Services

\$478.81

600 Supplies

630 Food

190.00

Total Supplies

\$190.00

800 Other Objects

810 Dues and Fees

158.52

Total Other Objects

\$158.52

Total 2710 Supervision of Student Transportation Services

\$142,441.07

General Fund (10)

2711 Supervision of Student Transportation Services – Head of Component

	<u>Elementary</u>	<u>Secondary</u>	<u>Federal</u>	<u>Total</u>
100 Personnel Services – Salaries				
100 Personnel Services – Salaries				84,440.00
Total Personnel Services – Salaries				\$84,440.00
200 Personnel Services – Employee Benefits				
210 Group Insurance – Contracted Provider				295.26
220 Social Security Contributions				6,510.33
230 PSERS Retirement Contributions				29,140.21
260 Workers' Compensation				444.11
270 Group Insurance – Self-Insurance				15,804.25
292 Health Savings Accounts				2,500.00
299 All Other Employee Benefits				1,846.64
Total Personnel Services – Employee Benefits				\$56,540.80
300 Purchased Professional and Technical Services				
330 Other Professional Services				632.94
Total Purchased Professional and Technical Services				\$632.94
500 Other Purchased Services				
530 Communications				134.12
580 Travel				344.69
Total Other Purchased Services				\$478.81
600 Supplies				
630 Food				190.00
Total Supplies				\$190.00
800 Other Objects				
810 Dues and Fees				158.52
Total Other Objects				\$158.52
Total 2711 Supervision of Student Transportation Services – Head of Component				\$142,441.07

General Fund (10)

2720 Vehicle Operation Services

Elementary

Secondary

Federal

Total

400 Purchased Property Services

430 Repairs and Maintenance Services

1,910.00

440 Rentals

37,150.68

Total Purchased Property Services

\$39,060.68

500 Other Purchased Services

513 Contracted Carriers

3,404,820.00

516 Student Transportation Services From the IU

122,099.89

Total Other Purchased Services

\$3,526,919.89

600 Supplies

610 General Supplies

374.95

650 Supplies & Fees – Technology Related

10,291.97

Total Supplies

\$10,666.92

800 Other Objects

810 Dues and Fees

1,237.50

Total Other Objects

\$1,237.50

Total 2720 Vehicle Operation Services

\$3,577,884.99

LEA : 113364503 Manheim Township SD

Printed 10/29/2021 8:07:52 AM

General Fund (10)

	<u>Elementary</u>	<u>Secondary</u>	<u>Federal</u>	<u>Total</u>
2740 Vehicle Servicing and Maintenance Services				
400 <u>Purchased Property Services</u>				
430 Repairs and Maintenance Services				3,593.15
Total Purchased Property Services				\$3,593.15
600 <u>Supplies</u>				
620 Energy				2,199.14
Total Supplies				\$2,199.14
Total 2740 Vehicle Servicing and Maintenance Services				\$5,792.29

General Fund (10)

2750 Nonpublic Transportation

Elementary

Secondary

Federal

Total

100 Personnel Services – Salaries

100 Personnel Services – Salaries

9,589.56

Total Personnel Services – Salaries

\$9,589.56

200 Personnel Services – Employee Benefits

210 Group Insurance – Contracted Provider

11.94

220 Social Security Contributions

751.96

230 PSERS Retirement Contributions

3,309.36

260 Workers' Compensation

49.35

270 Group Insurance – Self-Insurance

1,833.66

292 Health Savings Accounts

300.00

299 All Other Employee Benefits

322.35

Total Personnel Services – Employee Benefits

\$6,578.62

500 Other Purchased Services

513 Contracted Carriers

265,386.80

Total Other Purchased Services

\$265,386.80

Total 2750 Nonpublic Transportation

\$281,554.98

General Fund (10)

2800 Support Services – Central

Elementary

Secondary

Federal

Total

100 Personnel Services – Salaries

100 Personnel Services – Salaries

362,939.06

Total Personnel Services – Salaries

\$362,939.06

200 Personnel Services – Employee Benefits

210 Group Insurance – Contracted Provider

1,234.09

220 Social Security Contributions

27,390.03

230 PSERS Retirement Contributions

123,800.14

240 Tuition Reimbursement

62,218.87

260 Workers' Compensation

2,417.37

270 Group Insurance – Self-Insurance

58,092.55

292 Health Savings Accounts

6,000.00

299 All Other Employee Benefits

1,512.51

Total Personnel Services – Employee Benefits

\$282,665.56

300 Purchased Professional and Technical Services

330 Other Professional Services

5,800.00

360 Employee Training and Development Services

14,531.95

390 Other Purchased Professional and Technical Services

19,884.16

Total Purchased Professional and Technical Services

\$40,216.11

500 Other Purchased Services

530 Communications

2,566.75

549 Other Advertising/Public Relations

11,867.40

550 Printing and Binding

4,288.83

580 Travel

86.66

Total Other Purchased Services

\$18,809.64

600 Supplies

610 General Supplies

243.85

630 Food

926.65

650 Supplies & Fees – Technology Related

60,812.41

Total Supplies

\$61,982.91

800 Other Objects

810 Dues and Fees

1,480.12

Total Other Objects

\$1,480.12

Total 2800 Support Services – Central

\$768,093.40

General Fund (10)

2810 Planning, Research, Development and Evaluation Services

Elementary

Secondary

Federal

Total

100 Personnel Services – Salaries

100 Personnel Services – Salaries

22,137.08

Total Personnel Services – Salaries

\$22,137.08

200 Personnel Services – Employee Benefits

210 Group Insurance – Contracted Provider

52.56

220 Social Security Contributions

1,637.82

230 PSERS Retirement Contributions

7,639.38

260 Workers' Compensation

148.04

270 Group Insurance – Self-Insurance

9,550.32

Total Personnel Services – Employee Benefits

\$19,028.12

Total 2810 Planning, Research, Development and Evaluation Services

\$41,165.20

General Fund (10)

	<u>Elementary</u>	<u>Secondary</u>	<u>Federal</u>	<u>Total</u>
2820 Information Services				
100 Personnel Services – Salaries				
100 Personnel Services – Salaries				34,901.93
Total Personnel Services – Salaries				\$34,901.93
200 Personnel Services – Employee Benefits				
210 Group Insurance – Contracted Provider				133.08
220 Social Security Contributions				2,666.18
230 PSERS Retirement Contributions				11,144.90
270 Group Insurance – Self-Insurance				6,766.14
292 Health Savings Accounts				1,000.00
299 All Other Employee Benefits				30.00
Total Personnel Services – Employee Benefits				\$21,740.30
300 Purchased Professional and Technical Services				
390 Other Purchased Professional and Technical Services				3,300.00
Total Purchased Professional and Technical Services				\$3,300.00
500 Other Purchased Services				
530 Communications				2,043.60
549 Other Advertising/Public Relations				11,867.40
550 Printing and Binding				4,288.83
Total Other Purchased Services				\$18,199.83
600 Supplies				
610 General Supplies				172.20
650 Supplies & Fees – Technology Related				350.00
Total Supplies				\$522.20
Total 2820 Information Services				\$78,664.26

General Fund (10)

2821 Supervision of Information Services

Elementary

Secondary

Federal

Total

100 Personnel Services – Salaries

100 Personnel Services – Salaries 34,901.93

Total Personnel Services – Salaries \$34,901.93

200 Personnel Services – Employee Benefits

210 Group Insurance – Contracted Provider 133.08

220 Social Security Contributions 2,666.18

230 PSERS Retirement Contributions 11,144.90

270 Group Insurance – Self-Insurance 6,766.14

292 Health Savings Accounts 1,000.00

299 All Other Employee Benefits 30.00

Total Personnel Services – Employee Benefits \$21,740.30

300 Purchased Professional and Technical Services

390 Other Purchased Professional and Technical Services 3,300.00

Total Purchased Professional and Technical Services \$3,300.00

500 Other Purchased Services

530 Communications 2,043.60

549 Other Advertising/Public Relations 11,867.40

550 Printing and Binding 4,288.83

Total Other Purchased Services \$18,199.83

600 Supplies

610 General Supplies 172.20

650 Supplies & Fees – Technology Related 350.00

Total Supplies \$522.20

Total 2821 Supervision of Information Services \$78,664.26

General Fund (10)

2830 Staff Services

Elementary Secondary Federal Total

100	<u>Personnel Services – Salaries</u>				
	100 Personnel Services – Salaries				281,220.01
Total Personnel Services – Salaries					\$281,220.01
200	<u>Personnel Services – Employee Benefits</u>				
	210 Group Insurance – Contracted Provider				1,022.08
	220 Social Security Contributions				21,213.12
	230 PSERS Retirement Contributions				97,048.24
	240 Tuition Reimbursement				62,218.87
	260 Workers' Compensation				2,121.29
	270 Group Insurance – Self-Insurance				37,185.28
	292 Health Savings Accounts				5,000.00
	299 All Other Employee Benefits				1,482.51
Total Personnel Services – Employee Benefits					\$227,291.39
300	<u>Purchased Professional and Technical Services</u>				
	330 Other Professional Services				5,800.00
	360 Employee Training and Development Services				14,531.95
	390 Other Purchased Professional and Technical Services				16,584.16
Total Purchased Professional and Technical Services					\$36,916.11
500	<u>Other Purchased Services</u>				
	530 Communications				523.15
	580 Travel				86.66
Total Other Purchased Services					\$609.81
600	<u>Supplies</u>				
	610 General Supplies				71.65
	630 Food				926.65
	650 Supplies & Fees – Technology Related				60,462.41
Total Supplies					\$61,460.71
800	<u>Other Objects</u>				
	810 Dues and Fees				1,480.12
Total Other Objects					\$1,480.12
Total 2830 Staff Services					\$608,978.15

General Fund (10)

2831 Supervision of Staff Services

Elementary

Secondary

Federal

Total

100 Personnel Services – Salaries

100 Personnel Services – Salaries

142,349.30

Total Personnel Services – Salaries

\$142,349.30

200 Personnel Services – Employee Benefits

210 Group Insurance – Contracted Provider

377.20

220 Social Security Contributions

10,812.26

230 PSERS Retirement Contributions

49,124.80

260 Workers' Compensation

937.56

270 Group Insurance – Self-Insurance

7,617.90

292 Health Savings Accounts

1,000.00

299 All Other Employee Benefits

1,070.70

Total Personnel Services – Employee Benefits

\$70,940.42

Total 2831 Supervision of Staff Services

\$213,289.72

General Fund (10)

2832 Recruitment and Placement Services

Elementary

Secondary

Federal

Total

100 Personnel Services – Salaries

100 Personnel Services – Salaries 73,682.82

Total Personnel Services – Salaries \$73,682.82

200 Personnel Services – Employee Benefits

210 Group Insurance – Contracted Provider 539.64

220 Social Security Contributions 5,464.51

230 PSERS Retirement Contributions 25,427.90

260 Workers' Compensation 1,183.73

270 Group Insurance – Self-Insurance 22,066.36

292 Health Savings Accounts 3,000.00

299 All Other Employee Benefits 411.81

Total Personnel Services – Employee Benefits \$58,093.95

300 Purchased Professional and Technical Services

390 Other Purchased Professional and Technical Services 16,584.16

Total Purchased Professional and Technical Services \$16,584.16

500 Other Purchased Services

530 Communications 523.15

Total Other Purchased Services \$523.15

600 Supplies

610 General Supplies 71.65

650 Supplies & Fees – Technology Related 60,462.41

Total Supplies \$60,534.06

800 Other Objects

810 Dues and Fees 994.12

Total Other Objects \$994.12

Total 2832 Recruitment and Placement Services \$210,412.26

General Fund (10)

2833 Staff Accounting Services

Elementary

Secondary

Federal

Total

100 Personnel Services – Salaries

100 Personnel Services – Salaries

25,800.49

Total Personnel Services – Salaries

\$25,800.49

200 Personnel Services – Employee Benefits

210 Group Insurance – Contracted Provider

52.68

220 Social Security Contributions

1,948.53

230 PSERS Retirement Contributions

8,903.73

270 Group Insurance – Self-Insurance

3,750.60

292 Health Savings Accounts

500.00

Total Personnel Services – Employee Benefits

\$15,155.54

Total 2833 Staff Accounting Services

\$40,956.03

General Fund (10)

	<u>Elementary</u>	<u>Secondary</u>	<u>Federal</u>	<u>Total</u>
2834 Staff Development Services – Non-Instructional, Certified Staff Only				
200 Personnel Services – Employee Benefits				
240 Tuition Reimbursement				42,778.87
Total Personnel Services – Employee Benefits				\$42,778.87
300 Purchased Professional and Technical Services				
360 Employee Training and Development Services				9,207.95
Total Purchased Professional and Technical Services				\$9,207.95
500 Other Purchased Services				
580 Travel				86.66
Total Other Purchased Services				\$86.66
800 Other Objects				
810 Dues and Fees				486.00
Total Other Objects				\$486.00
Total 2834 Staff Development Services – Non-Instructional, Certified Staff Only				\$52,559.48

General Fund (10)

2835 Health Services

100 Personnel Services – Salaries

	<u>Elementary</u>	<u>Secondary</u>	<u>Federal</u>	<u>Total</u>
100 Personnel Services – Salaries				25,800.39
Total Personnel Services – Salaries				\$25,800.39
200 Personnel Services – Employee Benefits				
210 Group Insurance – Contracted Provider				52.56
220 Social Security Contributions				1,948.42
230 PSERS Retirement Contributions				8,903.72
270 Group Insurance – Self-Insurance				3,750.42
292 Health Savings Accounts				500.00
Total Personnel Services – Employee Benefits				\$15,155.12
300 Purchased Professional and Technical Services				
330 Other Professional Services				5,800.00
Total Purchased Professional and Technical Services				\$5,800.00
Total 2835 Health Services				\$46,755.51

General Fund (10)

2836 Staff Development Services – Non-Instructional, Non-Certified Staff Only

Elementary

Secondary

Federal

Total

100 Personnel Services – Salaries

100 Personnel Services – Salaries

13,587.01

Total Personnel Services – Salaries

\$13,587.01

200 Personnel Services – Employee Benefits

220 Social Security Contributions

1,039.40

230 PSERS Retirement Contributions

4,688.09

240 Tuition Reimbursement

19,440.00

Total Personnel Services – Employee Benefits

\$25,167.49

300 Purchased Professional and Technical Services

360 Employee Training and Development Services

5,324.00

Total Purchased Professional and Technical Services

\$5,324.00

Total 2836 Staff Development Services – Non-Instructional, Non-Certified Staff Only

\$44,078.50

LEA : 113364503 Manheim Township SD

Printed 10/29/2021 8:07:52 AM

General Fund (10)

2839 Other Staff Services

Elementary

Secondary

Federal

Total

600 Supplies

630 Food

926.65

Total Supplies

\$926.65

Total 2839 Other Staff Services

\$926.65

General Fund (10)

2850 State and Federal Agency Liaison Services

Elementary

Secondary

Federal

Total

100 Personnel Services – Salaries

100 Personnel Services – Salaries

24,680.04

Total Personnel Services – Salaries

\$24,680.04

200 Personnel Services – Employee Benefits

210 Group Insurance – Contracted Provider

26.37

220 Social Security Contributions

1,872.91

230 PSERS Retirement Contributions

7,967.62

260 Workers' Compensation

148.04

270 Group Insurance – Self-Insurance

4,590.81

Total Personnel Services – Employee Benefits

\$14,605.75

Total 2850 State and Federal Agency Liaison Services

\$39,285.79

General Fund (10)

2900 Other Support Services

Elementary

Secondary

Federal

Total

500 Other Purchased Services

595 IU Payments By Withholding

53,007.12

Total Other Purchased Services

\$53,007.12

Total 2900 Other Support Services

\$53,007.12

General Fund (10)

2910 Support Services Not Listed Elsewhere In the 2000 Series

Elementary

Secondary

Federal

Total

500 Other Purchased Services

595 IU Payments By Withholding

53,007.12

Total Other Purchased Services

\$53,007.12

Total 2910 Support Services Not Listed Elsewhere In the 2000 Series

\$53,007.12

General Fund (10)

3000 Operation of Non-Instructional Services

Total

100 Personnel Services – Salaries

100 Personnel Services – Salaries 764,423.75

Total Personnel Services – Salaries

\$764,423.75

200 Personnel Services – Employee Benefits

210 Group Insurance – Contracted Provider 842.70

220 Social Security Contributions 57,987.56

230 PSERS Retirement Contributions 214,895.83

250 Unemployment Compensation 660.08

260 Workers' Compensation 2,122.10

270 Group Insurance – Self-Insurance 23,509.66

292 Health Savings Accounts 3,000.00

299 All Other Employee Benefits 1,259.00

Total Personnel Services – Employee Benefits

\$304,276.93

300 Purchased Professional and Technical Services

330 Other Professional Services 3,615.52

350 Security / Safety Services 6,907.50

390 Other Purchased Professional and Technical Services 119,134.44

Total Purchased Professional and Technical Services

\$129,657.46

400 Purchased Property Services

410 Cleaning Services 1,923.62

430 Repairs and Maintenance Services 26,445.85

440 Rentals 5,144.73

Total Purchased Property Services

\$33,514.20

500 Other Purchased Services

510 Student Transportation Services 59,907.73

520 Insurance – General 13,277.00

530 Communications 235.44

550 Printing and Binding 144.05

580 Travel 1,230.73

Total Other Purchased Services

\$74,794.95

600 Supplies

610 General Supplies 101,300.40

630 Food 844.31

640 Books and Periodicals 203.79

650 Supplies & Fees – Technology Related 12,129.48

Total Supplies

\$114,477.98

800 Other Objects

810 Dues and Fees 12,257.32

890 Miscellaneous Expenditures 3,664.00

Total Other Objects

\$15,921.32

Total 3000 Operation of Non-Instructional Services

\$1,437,066.59

General Fund (10)

3200 Student Activities

Elementary Secondary Federal Total

100 Personnel Services – Salaries

100 Personnel Services – Salaries 764,423.75

Total Personnel Services – Salaries \$764,423.75

200 Personnel Services – Employee Benefits

210 Group Insurance – Contracted Provider 842.70

220 Social Security Contributions 57,987.56

230 PSERS Retirement Contributions 214,895.83

250 Unemployment Compensation 660.08

260 Workers' Compensation 2,122.10

270 Group Insurance – Self-Insurance 23,509.66

292 Health Savings Accounts 3,000.00

299 All Other Employee Benefits 1,259.00

Total Personnel Services – Employee Benefits \$304,276.93

300 Purchased Professional and Technical Services

330 Other Professional Services 3,615.52

350 Security / Safety Services 6,907.50

390 Other Purchased Professional and Technical Services 119,134.44

Total Purchased Professional and Technical Services \$129,657.46

400 Purchased Property Services

410 Cleaning Services 1,923.62

430 Repairs and Maintenance Services 26,445.85

440 Rentals 5,144.73

Total Purchased Property Services \$33,514.20

500 Other Purchased Services

510 Student Transportation Services 59,907.73

520 Insurance – General 13,277.00

530 Communications 22.46

550 Printing and Binding 144.05

580 Travel 1,230.73

Total Other Purchased Services \$74,581.97

600 Supplies

610 General Supplies 97,249.64

630 Food 844.31

640 Books and Periodicals 203.79

650 Supplies & Fees – Technology Related 12,129.48

Total Supplies \$110,427.22

800 Other Objects

810 Dues and Fees 12,257.32

890 Miscellaneous Expenditures 3,664.00

Total Other Objects \$15,921.32

Total 3200 Student Activities \$1,432,802.85

General Fund (10)

3300 Community Services

Elementary

Secondary

Federal

Total

500 Other Purchased Services

530 Communications

212.98

212.98

Total Other Purchased Services

\$212.98

\$212.98

600 Supplies

610 General Supplies

3,977.76

4,050.76

Total Supplies

\$3,977.76

\$4,050.76

Total 3300 Community Services

\$4,190.74

\$4,263.74

General Fund (10)

4000 Facilities Acquisition, Construction and Improvement Services

Total

400 Purchased Property Services

450 Construction Services

65,956.40

Total Purchased Property Services

\$65,956.40

Total 4000 Facilities Acquisition, Construction and Improvement Services

\$65,956.40

General Fund (10)

	<u>Elementary</u>	<u>Secondary</u>	<u>Federal</u>	<u>Total</u>
4500 Building Acquisition and Construction Services – Original and Additional				
400 <u>Purchased Property Services</u>				
450 Construction Services				65,956.40
Total Purchased Property Services				\$65,956.40
Total 4500 Building Acquisition and Construction Services – Original and Additional				\$65,956.40

General Fund (10)

5000 Other Expenditures and Financing Uses

Total

800 Other Objects

830 Interest	5,198,669.46
880 Refunds of Prior Years' Receipts	3,103.80

Total Other Objects	\$5,201,773.26
----------------------------	-----------------------

900 Other Uses of Funds

910 Redemption of Principal	9,429,369.03
932 Capital Reserve Fund Transfers Applicable To Fund 32	503,450.00

Total Other Uses of Funds	\$9,932,819.03
----------------------------------	-----------------------

Total 5000 Other Expenditures and Financing Uses	\$15,134,592.29
---------------------------------------------------------	------------------------

LEA : 113364503 Manheim Township SD

Printed 10/29/2021 8:08:19 AM

General Fund (10)

5100 Debt Service / Other Expenditures and Financing Uses	<u>Elementary</u>	<u>Secondary</u>	<u>Federal</u>	<u>Total</u>
800 Other Objects				
830 Interest				5,198,669.46
880 Refunds of Prior Years' Receipts				3,103.80
Total Other Objects				\$5,201,773.26
900 Other Uses of Funds				
910 Redemption of Principal				9,429,369.03
Total Other Uses of Funds				\$9,429,369.03
Total 5100 Debt Service / Other Expenditures and Financing Uses				\$14,631,142.29

General Fund (10)

	<u>Elementary</u>	<u>Secondary</u>	<u>Federal</u>	<u>Total</u>
5110 Debt Service				
800 Other Objects				
830 Interest				5,198,669.46
Total Other Objects				\$5,198,669.46
900 Other Uses of Funds				
910 Redemption of Principal				9,429,369.03
Total Other Uses of Funds				\$9,429,369.03
Total 5110 Debt Service				\$14,628,038.49

LEA : 113364503 Manheim Township SD

Printed 10/29/2021 8:08:19 AM

General Fund (10)

	<u>Elementary</u>	<u>Secondary</u>	<u>Federal</u>	<u>Total</u>
5130 Refund of Prior Year Revenues / Receipts				
800 <u>Other Objects</u>				
880 Refunds of Prior Years' Receipts				3,103.80
Total Other Objects				\$3,103.80
Total 5130 Refund of Prior Year Revenues / Receipts				\$3,103.80

LEA : 113364503 Manheim Township SD

Printed 10/29/2021 8:08:19 AM

General Fund (10)

5200 Interfund Transfers – Out

Elementary

Secondary

Federal

Total

900 Other Uses of Funds

932 Capital Reserve Fund Transfers Applicable To Fund 32

503,450.00

Total Other Uses of Funds

\$503,450.00

Total 5200 Interfund Transfers – Out

\$503,450.00

LEA : 113364503 Manheim Township SD

Printed 10/29/2021 8:08:19 AM

General Fund (10)

5230 Capital Projects Fund Transfers

Elementary

Secondary

Federal

Total

900 Other Uses of Funds

932 Capital Reserve Fund Transfers Applicable To Fund 32

503,450.00

Total Other Uses of Funds

\$503,450.00

Total 5230 Capital Projects Fund Transfers

\$503,450.00

Capital Reserve Fund - § 1431 (32)

4000 Facilities Acquisition, Construction and Improvement Services

Total

300 Purchased Professional and Technical Services

330 Other Professional Services 1,427.84

Total Purchased Professional and Technical Services \$1,427.84

400 Purchased Property Services

450 Construction Services 1,584,051.00

Total Purchased Property Services \$1,584,051.00

700 Property

756 Capitalized Technology Equipment – Original 441,127.35

Total Property \$441,127.35

Total 4000 Facilities Acquisition, Construction and Improvement Services \$2,026,606.19

LEA : 113364503 Manheim Township SD

Printed 10/29/2021 8:08:10 AM

Capital Reserve Fund - § 1431 (32)

4200 Existing Site Improvement Services

Elementary

Secondary

Federal

Total

400 Purchased Property Services

450 Construction Services

618,000.00

Total Purchased Property Services

\$618,000.00

Total 4200 Existing Site Improvement Services

\$618,000.00

LEA : 113364503 Manheim Township SD

Printed 10/29/2021 8:08:10 AM

Capital Reserve Fund - § 1431 (32)

4400 Architecture and Engineering Services / Educational Specifications – Improvements

Elementary

Secondary

Federal

Total

300 Purchased Professional and Technical Services

330 Other Professional Services

1,427.84

Total Purchased Professional and Technical Services

\$1,427.84

Total 4400 Architecture and Engineering Services / Educational Specifications – Improvements

\$1,427.84

LEA : 113364503 Manheim Township SD

Printed 10/29/2021 8:08:10 AM

Capital Reserve Fund - § 1431 (32)

4500 Building Acquisition and Construction Services – Original and Additional

Elementary

Secondary

Federal

Total

700 Property

756 Capitalized Technology Equipment – Original

405,292.35

Total Property				\$405,292.35
Total 4500 Building Acquisition and Construction Services – Original and Additional				\$405,292.35

LEA : 113364503 Manheim Township SD

Printed 10/29/2021 8:08:10 AM

Capital Reserve Fund - § 1431 (32)

4600 Existing Building Improvement Services

Elementary

Secondary

Federal

Total

400 Purchased Property Services

450 Construction Services

966,051.00

Total Purchased Property Services

\$966,051.00

700 Property

756 Capitalized Technology Equipment— Original

35,835.00

Total Property

\$35,835.00

Total 4600 Existing Building Improvement Services

\$1,001,886.00

Other Capital Projects Fund (39)

4000 Facilities Acquisition, Construction and Improvement Services

Total

400 Purchased Property Services

450 Construction Services 17,709,785.60

Total Purchased Property Services \$17,709,785.60

700 Property

752 Capital Equipment – Original and Additional 1,442,146.11

756 Capitalized Technology Equipment – Original 135,150.00

Total Property \$1,577,296.11

Total 4000 Facilities Acquisition, Construction and Improvement Services \$19,287,081.71

Other Capital Projects Fund (39)

4500 Building Acquisition and Construction Services – Original and Additional

Elementary

Secondary

Federal

Total

400 Purchased Property Services

450 Construction Services

17,709,785.60

Total Purchased Property Services

\$17,709,785.60

700 Property

752 Capital Equipment – Original and Additional

1,442,146.11

756 Capitalized Technology Equipment – Original

135,150.00

Total Property

\$1,577,296.11

Total 4500 Building Acquisition and Construction Services – Original and Additional

\$19,287,081.71

LEA : 113364503 Manheim Township SD

Printed 10/29/2021 8:08:21 AM

Other Capital Projects Fund (39)

5000 Other Expenditures and Financing Uses

Total

900 Other Uses of Funds

990 Miscellaneous Other Uses of Funds

2,043,600.00

Total Other Uses of Funds

\$2,043,600.00

Total 5000 Other Expenditures and Financing Uses

\$2,043,600.00

LEA : 113364503 Manheim Township SD

Printed 10/29/2021 8:08:21 AM

Other Capital Projects Fund (39)

5100 Debt Service / Other Expenditures and Financing Uses

Elementary

Secondary

Federal

Total

900 Other Uses of Funds

990 Miscellaneous Other Uses of Funds

2,043,600.00

Total Other Uses of Funds

\$2,043,600.00

Total 5100 Debt Service / Other Expenditures and Financing Uses

\$2,043,600.00

LEA : 113364503 Manheim Township SD

Printed 10/29/2021 8:08:21 AM

Other Capital Projects Fund (39)

5110 Debt Service

Elementary

Secondary

Federal

Total

900 Other Uses of Funds

990 Miscellaneous Other Uses of Funds

2,043,600.00

Total Other Uses of Funds

\$2,043,600.00

Total 5110 Debt Service

\$2,043,600.00

Debt Service Fund (40)

2000 Support Services

800 Other Objects

810 Dues and Fees

601,000.00

Total Other Objects

\$601,000.00

Total 2000 Support Services

\$601,000.00

LEA : 113364503 Manheim Township SD

Printed 10/29/2021 8:07:56 AM

Debt Service Fund (40)

2300 Support Services – Administration

Elementary

Secondary

Federal

Total

800 Other Objects

810 Dues and Fees

601,000.00

Total Other Objects

\$601,000.00

Total 2300 Support Services – Administration

\$601,000.00

LEA : 113364503 Manheim Township SD

Printed 10/29/2021 8:07:56 AM

Debt Service Fund (40)

2390 Other Administration Services

Elementary

Secondary

Federal

Total

800 Other Objects

810 Dues and Fees

601,000.00

Total Other Objects

\$601,000.00

Total 2390 Other Administration Services

\$601,000.00

LEA : 113364503 Manheim Township SD

Printed 10/29/2021 8:08:24 AM

Debt Service Fund (40)

5000 Other Expenditures and Financing Uses

Total

800 Other Objects

830 Interest 8,531,822.75

Total Other Objects \$8,531,822.75

900 Other Uses of Funds

910 Redemption of Principal 70,470,000.00

Total Other Uses of Funds \$70,470,000.00

Total 5000 Other Expenditures and Financing Uses \$79,001,822.75

Debt Service Fund (40)

5100 Debt Service / Other Expenditures and Financing Uses	<u>Elementary</u>	<u>Secondary</u>	<u>Federal</u>	<u>Total</u>
800 <u>Other Objects</u>				
830 Interest				8,531,822.75
Total Other Objects				\$8,531,822.75
900 <u>Other Uses of Funds</u>				
910 Redemption of Principal				70,470,000.00
Total Other Uses of Funds				\$70,470,000.00
Total 5100 Debt Service / Other Expenditures and Financing Uses				\$79,001,822.75

Debt Service Fund (40)

5120 Debt Service – Refunded Bonds

Elementary

Secondary

Federal

Total

800 Other Objects

830 Interest

8,531,822.75

Total Other Objects

\$8,531,822.75

900 Other Uses of Funds

910 Redemption of Principal

70,470,000.00

Total Other Uses of Funds

\$70,470,000.00

Total 5120 Debt Service – Refunded Bonds

\$79,001,822.75

	<u>General Fund(10)</u>	<u>Student Sponsored Activity Fund(21)</u>	<u>Public Purpose Trust(27)</u>	<u>Other Compt Approved (28)</u>	<u>Athletic / Activity(29)</u>
1000 Instruction					
1100 Regular Programs - Elementary / Secondary	44,266,188.11				
1200 Special Programs - Elementary / Secondary	11,499,776.66				
1300 Vocational Education	960,290.77				
1400 Other Instructional Programs - Elementary / Secondary	191,009.76				
1500 Nonpublic School Programs	61,786.81				
Total Instruction	\$56,979,052.11				
2000 Support Services					
2100 Support Services - Students	3,859,298.02				
2200 Support Services - Instructional Staff	5,264,784.18				
2300 Support Services - Administration	5,626,944.05				
2400 Support Services - Pupil Health	1,452,045.88				
2500 Support Services - Business	754,185.33				
2600 Operation and Maintenance of Plant Services	8,211,676.08				
2700 Student Transportation Services	4,007,673.33				
2800 Support Services - Central	768,093.40				
2900 Other Support Services	53,007.12				
Total Support Services	\$29,997,707.39				
3000 Operation of Non-Instructional Services					
3200 Student Activities	1,432,802.85				
3300 Community Services	4,263.74				
Total Operation of Non-Instructional Services	\$1,437,066.59				
4000 Facilities Acquisition, Construction and Improvement Services					
4200 Existing Site Improvement Services					
4400 Architecture and Engineering Services / Educational Specifications - Improvements					
4500 Building Acquisition and Construction Services - Original and Additional	65,956.40				
4600 Existing Building Improvement Services					
Total Facilities Acquisition, Construction and Improvement Services	\$65,956.40				
5000 Other Expenditures and Financing Uses					
5100 Debt Service / Other Expenditures and Financing Uses	14,631,142.29				
5200 Interfund Transfers - Out	503,450.00				
Total Other Expenditures and Financing Uses	\$15,134,592.29				
TOTAL ACTUAL EXPENDITURES & OTHER FINANCING USES	\$103,614,374.78				

	<u>Capital Reserve (690.1850)(31)</u>	<u>Capital Reserve (1431)(32)</u>	<u>Other Capital Projects Fund(39)</u>	<u>Debt Service(40)</u>	<u>Permanent(90)</u>
1000 Instruction					
1100 Regular Programs - Elementary / Secondary					
1200 Special Programs - Elementary / Secondary					
1300 Vocational Education					
1400 Other Instructional Programs - Elementary / Secondary					
1500 Nonpublic School Programs					
Total Instruction					
2000 Support Services					
2100 Support Services - Students					
2200 Support Services - Instructional Staff					
2300 Support Services - Administration				601,000.00	
2400 Support Services - Pupil Health					
2500 Support Services - Business					
2600 Operation and Maintenance of Plant Services					
2700 Student Transportation Services					
2800 Support Services - Central					
2900 Other Support Services					
Total Support Services				\$601,000.00	
3000 Operation of Non-Instructional Services					
3200 Student Activities					
3300 Community Services					
Total Operation of Non-Instructional Services					
4000 Facilities Acquisition, Construction and Improvement Services					
4200 Existing Site Improvement Services		618,000.00			
4400 Architecture and Engineering Services / Educational Specifications - Improvements		1,427.84			
4500 Building Acquisition and Construction Services - Original and Additional		405,292.35	19,287,081.71		
4600 Existing Building Improvement Services		1,001,886.00			
Total Facilities Acquisition, Construction and Improvement Services		\$2,026,606.19	\$19,287,081.71		
5000 Other Expenditures and Financing Uses					
5100 Debt Service / Other Expenditures and Financing Uses			2,043,600.00	79,001,822.75	
5200 Interfund Transfers - Out					
Total Other Expenditures and Financing Uses			\$2,043,600.00	\$79,001,822.75	
TOTAL ACTUAL EXPENDITURES & OTHER FINANCING USES		\$2,026,606.19	\$21,330,681.71	\$79,602,822.75	

Total

1000 Instruction	
1100 Regular Programs - Elementary / Secondary	44,266,188.11
1200 Special Programs - Elementary / Secondary	11,499,776.66
1300 Vocational Education	960,290.77
1400 Other Instructional Programs - Elementary / Secondary	191,009.76
1500 Nonpublic School Programs	61,786.81
Total Instruction	\$56,979,052.11
2000 Support Services	
2100 Support Services - Students	3,859,298.02
2200 Support Services - Instructional Staff	5,264,784.18
2300 Support Services - Administration	6,227,944.05
2400 Support Services - Pupil Health	1,452,045.88
2500 Support Services - Business	754,185.33
2600 Operation and Maintenance of Plant Services	8,211,676.08
2700 Student Transportation Services	4,007,673.33
2800 Support Services - Central	768,093.40
2900 Other Support Services	53,007.12
Total Support Services	\$30,598,707.39
3000 Operation of Non-Instructional Services	
3200 Student Activities	1,432,802.85
3300 Community Services	4,263.74
Total Operation of Non-Instructional Services	\$1,437,066.59
4000 Facilities Acquisition, Construction and Improvement Services	
4200 Existing Site Improvement Services	618,000.00
4400 Architecture and Engineering Services / Educational Specifications - Improvements	1,427.84
4500 Building Acquisition and Construction Services - Original and Additional	19,758,330.46
4600 Existing Building Improvement Services	1,001,886.00
Total Facilities Acquisition, Construction and Improvement Services	\$21,379,644.30
5000 Other Expenditures and Financing Uses	
5100 Debt Service / Other Expenditures and Financing Uses	95,676,565.04
5200 Interfund Transfers - Out	503,450.00
Total Other Expenditures and Financing Uses	\$96,180,015.04
TOTAL ACTUAL EXPENDITURES & OTHER FINANCING USES	\$206,574,485.43

LEA : 113364503 Manheim Township SD

Printed 10/29/2021 8:08:48 AM

PSERS Salary Data (Salary Data should relate to the General Fund only)

Amount Description	Amount
Total Salary Base for salaries subject to PSERS withholding	41,095,077.92
Total Federally Funded salaries subject to PSERS withholding	807,812.23
	<hr/>

Title I Expenditure Data

Amount Description	Amount
Expenditures Funded with Current Title I Funds	470,963.00
Expenditures Funded with Carry over Title I Funds	16,310.44
	<hr/>
Total Title I Expenditure Data	\$487,273.44
	<hr/>

Title IV Revenue Data

Amount Description	Amount
Revenue from Title IV-A-1: Student Support and Academic Enrichment Grants	47,583.57
Revenue from Title IV-B: 21st Century Community Learning Centers	
	<hr/>

Title V Revenue Data

Amount Description	Amount
Revenue from Title V-B-2: Rural and Low-Income School Programs	
Revenue from Title V-B-1: Small Rural School Achievement (Directly from the Federal Govt)	
	<hr/>

Benefits for Staff Relative to Collective Bargaining Agreements

	OBJECT	COVERED	NOT COVERED	TOTAL
10 General Fund	No Self Insurance data to report			
	211 Medical Insurance			
	212 Dental Insurance			
	215 Eye Care Insurance	43,845.68	14,615.23	58,460.91
	216 Prescription Insurance			
	271 Self-Insurance Medical Benefits			
	272 Self-Insurance Dental Benefits			
	275 Self-Insurance Eye Care Benefits			
	276 Self-Insurance Prescription Benefits			
	FUND TOTAL		\$43,845.68	\$14,615.23
50 Enterprise Fund	No Self Insurance data to report			
	211 Medical Insurance			
	212 Dental Insurance			
	215 Eye Care Insurance		2,036.30	2,036.30
	216 Prescription Insurance			
	271 Self-Insurance Medical Benefits			
	272 Self-Insurance Dental Benefits			
	275 Self-Insurance Eye Care Benefits			
	276 Self-Insurance Prescription Benefits			
	FUND TOTAL		\$2,036.30	\$2,036.30
60 Internal Service Fund				
	211 Medical Insurance			
	212 Dental Insurance			
	215 Eye Care Insurance			
	216 Prescription Insurance			
	271 Self-Insurance Medical Benefits	4,840,843.40	1,613,614.47	6,454,457.87
	272 Self-Insurance Dental Benefits	301,899.57	100,633.19	402,532.76
	275 Self-Insurance Eye Care Benefits			
	276 Self-Insurance Prescription Benefits	1,493,312.52	497,770.84	1,991,083.36
	FUND TOTAL	\$6,636,055.49	\$2,212,018.50	\$8,848,073.99
Total of All Funds		\$6,679,901.17	\$2,228,670.03	\$8,908,571.20

LEA : 113364503 Manheim Township SD

Printed 10/29/2021 8:08:54 AM

Function	Special Education (Prior Year)	Nonspecial Education (Prior Year)	Total (Prior Year)	Special Education (Current Year)	Nonspecial Education (Current Year)	Total (Current Year)
2120 Guidance Services	345,569.29	2,006,188.92	2,351,758.21	331,544.44	2,030,790.71	2,362,335.15
2140 Psychological Services	640,363.78	160,090.95	800,454.73	655,022.62	163,755.66	818,778.28
2150 Speech Pathology and Audiology Services						
2160 Social Work Services	30,387.91	176,415.85	206,803.76	30,309.06	181,313.13	211,622.19
2260 Instruction and Curriculum Development Services	636,762.01	1,088,431.84	1,725,193.85	740,034.43	910,660.15	1,650,694.58
2350 Legal and Accounting Services	28,611.16	163,496.39	192,107.55	60,552.75	128,595.61	189,148.36
2420 Medical Services	203,963.31	50,850.84	254,814.15	245,364.06	164,758.81	410,122.87
2440 Nursing Services	158,436.19	919,795.08	1,078,231.27	149,225.70	892,689.44	1,041,915.14
2700 Student Transportation Services	573,846.30	2,598,742.92	3,172,589.22	667,689.19	3,339,984.14	4,007,673.33
Total	\$2,617,939.95	\$7,164,012.79	\$9,781,952.74	\$2,879,742.25	\$7,812,547.65	\$10,692,289.90

(PRINCIPAL AMOUNTS ONLY)

GOVERNMENTAL FUNDS/ ACTIVITIES

	Short-Term Borrowing	General Obligation Bonds/Notes	Authority Building Obligations	Other Long-Term Debt	Other Post-Employment Benefits (OPEB)	Compensated Absences	Net Pension Liability	Total
1. Debt at Beginning of Fiscal Year		124,995,000.00			17,543,642.00	774,098.00	133,002,000.00	276,314,740.00
2. Additional Debt Incurred During Year		79,615,000.00		645,394.18			7,900,000.00	88,160,394.18
3. Retirements and Repayments		79,735,000.00		164,369.03	122,139.00	181,280.00		80,202,788.03
4. Debt at End of Fiscal Year		124,875,000.00		481,025.15	17,421,503.00	592,818.00	140,902,000.00	284,272,346.15
5. Accreted Interest at End Of Fiscal Year								
6. Total Debt and Accreted Interest		124,875,000.00		481,025.15	17,421,503.00	592,818.00	140,902,000.00	284,272,346.15
7. Current Portion P&I - Due within 1 year		12,110,753.95		164,463.80				12,275,217.75
8. Interest Paid during current fiscal year		13,730,492.21						13,730,492.21

(PRINCIPAL AMOUNTS ONLY)

PROPRIETARY FUNDS

	Short-Term Borrowing	General Obligation Bonds/Notes	Authority Building Obligations	Other Long-Term Debt	Other Post-Employment Benefits (OPEB)	Compensated Absences	Net Pension Liability	Total
1. Debt at Beginning of Fiscal Year					180,772.00		2,714,000.00	2,894,772.00
2. Additional Debt Incurred During Year					1,703.00		162,000.00	163,703.00
3. Retirements and Repayments								
4. Debt at End of Fiscal Year					182,475.00		2,876,000.00	3,058,475.00
5. Accreted Interest at End Of Fiscal Year								
6. Total Debt and Accreted Interest					182,475.00		2,876,000.00	3,058,475.00
7. Current Portion P&I - Due within 1 year								
8. Interest Paid during current fiscal year								

Total Principal and Interest Payments Made by Your School - All Funds

Function	Fund		Principal (910)	Principal (920)	Interest (830)	Total (Principal +Interest)	Misc Other Uses (990)
5110	10	General Fund	9,429,369.03		5,198,669.46	14,628,038.49	
5110	20	Special Revenue Funds					
5110	30	Capital Projects Funds					2,043,600.00
5110	40	Debt Service Fund					
5110	90	Permanent Fund					
5120	10	General Fund					
5120	20	Special Revenue Funds					
5120	30	Capital Projects Funds					
5120	40	Debt Service Fund	70,470,000.00		8,531,822.75	79,001,822.75	
Total Debt Payments - Governmental Funds			\$79,899,369.03		\$13,730,492.21	\$93,629,861.24	\$2,043,600.00

Function	Fund		Principal (910)	Principal (920)	Interest (830)	Total (Principal +Interest)
5110	50	Enterprise Fund				
5110	60	Internal Service Fund				
5120	50	Enterprise Fund				
5120	60	Internal Service Fund				
Total Debt Payments - Proprietary Funds						

Debt Details
Governmental Funds/ Activities

Debt Category	Debt Issue Date (MM/YYYY)	Principal Amounts Only			Debt at End of Fiscal Year	Current Portion Due Within One Year (Principal and Interest)	Interest Paid During Fiscal Year
		Debt at Beginning of Fiscal Year	Additions	Reductions / Repayments			
General Obligation Bonds/Notes – CIB	6/2021		25,645,000.00		25,645,000.00	7,814,524.75	
General Obligation Bonds/Notes – CIB	6/2021		53,970,000.00		53,970,000.00	937,421.70	
General Obligation Bonds/Notes – CIB	2/2020	26,845,000.00		5,000.00	26,840,000.00	1,059,400.00	893,351.35
General Obligation Bonds/Notes – CIB	4/2019	9,490,000.00		1,075,000.00	8,415,000.00	1,335,657.50	252,907.50
General Obligation Bonds/Notes – CIB	4/2018	44,990,000.00		44,990,000.00			10,683,516.53
General Obligation Bonds/Notes – CIB	4/2018	10,525,000.00		520,000.00	10,005,000.00	963,750.00	409,150.00
General Obligation Bonds/Notes – CIB	8/2017	32,350,000.00		32,350,000.00			1,467,716.83
General Obligation Bonds/Notes – CIB	2/2013	795,000.00		795,000.00			23,850.00
Extended Term Financing Agreements			645,394.18	164,369.03	481,025.15	164,463.80	
Compensated Absences		774,098.00		181,280.00	592,818.00		
Other Post-Employment Benefits (OPEB)		17,543,642.00		122,139.00	17,421,503.00		
Net Pension Liability		133,002,000.00	7,900,000.00		140,902,000.00		
Totals for Debt Entered:		\$276,314,740.00	\$88,160,394.18	\$80,202,788.03	\$284,272,346.15	\$12,275,217.75	\$13,730,492.21

Bond Details
Proprietary Funds

Debt Category	Debt Issue Date (MM/YYYY)	Principal Amounts Only			Debt at End of Fiscal Year	Current Portion Due Within One Year (Principal and Interest)	Interest Paid During Fiscal Year
		Debt at Beginning of Fiscal Year	Additions	Reductions / Repayments			
Other Post-Employment Benefits (OPEB)		180,772.00	1,703.00		182,475.00		
Net Pension Liability		2,714,000.00	162,000.00		2,876,000.00		
Totals for Debt Entered:		\$2,894,772.00	\$163,703.00		\$3,058,475.00		

General Fund (10)

Section 1: Tuition/Purchased Services as Reported within Expenditure Detail

	Amount
Tuition Reported in General Fund Expenditures 1000-560	3,873,550.75
Purchased Services in General Fund Expenditures 1000-594 and 1000-597	873.19
Section 1 Total	\$3,874,423.94

Section 2: Tuition Paid to Institution Types During Fiscal Year

	Tuition Paid For Nonspecial Education	Tuition Paid For Special Education	Total
1 1306 Institutions			
2 Institutionalized Children's Programs		873.19	873.19
3 Juveniles Incarcerated in Adult Facilities			
4 Residential Treatment Facilities		36,285.00	36,285.00
5 Other Local Education Agencies	51,575.09	184,932.03	236,507.12
6 Brick and Mortar Charter Schools	44,160.95	44,926.62	89,087.57
7 Cyber Charter Schools	1,454,142.75	493,626.96	1,947,769.71
8 Career and Technology Centers	960,290.77		960,290.77
9 Approved Private Schools		230,935.56	230,935.56
10 PA Chartered Schools for the Deaf and Blind			
11 Private Residential Rehabilitative Institutions	7,847.52		7,847.52
12 Juvenile Detention Centers			
13 Special Program Jointures	49,960.00		49,960.00
14 Other Tuition Not Included Elsewhere In This Section	70,323.38	244,544.12	314,867.50
Section 2 Total	\$2,638,300.46	\$1,236,123.48	\$3,874,423.94

LEA : 113364503 Manheim Township SD

Printed 10/29/2021 8:09:09 AM

Food Service / Cafeteria Operations Fund (51)

3000 Operation of Non-Instructional Services

Total

100 Personnel Services – Salaries

100 Personnel Services – Salaries 850,159.43

Total Personnel Services – Salaries \$850,159.43

200 Personnel Services – Employee Benefits

210 Group Insurance – Contracted Provider 2,036.30

220 Social Security Contributions 63,538.13

230 PSERS Retirement Contributions 374,810.49

250 Unemployment Compensation 4,201.12

260 Workers' Compensation 912.86

270 Group Insurance – Self-Insurance 282,596.17

280 Other Post-Employment Benefits (OPEB) (23,853.00)

292 Health Savings Accounts 25,000.00

299 All Other Employee Benefits 60.00

Total Personnel Services – Employee Benefits \$729,302.07

300 Purchased Professional and Technical Services

330 Other Professional Services 5,921.93

Total Purchased Professional and Technical Services \$5,921.93

400 Purchased Property Services

410 Cleaning Services 12,502.06

430 Repairs and Maintenance Services 17,977.61

440 Rentals 124.04

Total Purchased Property Services \$30,603.71

500 Other Purchased Services

530 Communications 1,064.48

540 Advertising 246.20

550 Printing and Binding 1,779.10

580 Travel 1,797.86

Total Other Purchased Services \$4,887.64

600 Supplies

610 General Supplies 105,903.05

620 Energy 3,135.31

630 Food 945,188.79

650 Supplies & Fees – Technology Related 17,284.00

Total Supplies \$1,071,511.15

700 Property

740 Depreciation 97,372.88

Total Property \$97,372.88

800 Other Objects

810 Dues and Fees 2,197.51

Total Other Objects \$2,197.51

Total 3000 Operation of Non-Instructional Services \$2,791,956.32

LEA : 113364503 Manheim Township SD

Printed 10/29/2021 8:09:09 AM

Food Service / Cafeteria Operations Fund (51)

	<u>Elementary</u>	<u>Secondary</u>	<u>Federal</u>	<u>Total</u>
3100 Food Services				
100 Personnel Services – Salaries				
100 Personnel Services – Salaries				850,159.43
Total Personnel Services – Salaries				\$850,159.43
200 Personnel Services – Employee Benefits				
210 Group Insurance – Contracted Provider				2,036.30
220 Social Security Contributions				63,538.13
230 PSERS Retirement Contributions				374,810.49
250 Unemployment Compensation				4,201.12
260 Workers' Compensation				912.86
270 Group Insurance – Self-Insurance				282,596.17
280 Other Post-Employment Benefits (OPEB)				(23,853.00)
292 Health Savings Accounts				25,000.00
299 All Other Employee Benefits				60.00
Total Personnel Services – Employee Benefits				\$729,302.07
300 Purchased Professional and Technical Services				
330 Other Professional Services				5,921.93
Total Purchased Professional and Technical Services				\$5,921.93
400 Purchased Property Services				
410 Cleaning Services				12,502.06
430 Repairs and Maintenance Services				17,977.61
440 Rentals				124.04
Total Purchased Property Services				\$30,603.71
500 Other Purchased Services				
530 Communications				1,064.48
540 Advertising				246.20
550 Printing and Binding				1,779.10
580 Travel				1,797.86
Total Other Purchased Services				\$4,887.64
600 Supplies				
610 General Supplies				105,903.05
620 Energy				3,135.31
630 Food				945,188.79
650 Supplies & Fees – Technology Related				17,284.00
Total Supplies				\$1,071,511.15
700 Property				
740 Depreciation				97,372.88
Total Property				\$97,372.88
800 Other Objects				
810 Dues and Fees				2,197.51
Total Other Objects				\$2,197.51
Total 3100 Food Services				\$2,791,956.32

Internal Service Fund (60)

2000 Support Services

Total

200 Personnel Services – Employee Benefits

270 Group Insurance – Self-Insurance

8,848,073.99

Total Personnel Services – Employee Benefits

\$8,848,073.99

800 Other Objects

810 Dues and Fees

4,341.80

Total Other Objects

\$4,341.80

Total 2000 Support Services

\$8,852,415.79

Internal Service Fund (60)

2800 Support Services – Central

Elementary

Secondary

Federal

Total

200 Personnel Services – Employee Benefits

270 Group Insurance – Self-Insurance

8,848,073.99

Total Personnel Services – Employee Benefits

\$8,848,073.99

800 Other Objects

810 Dues and Fees

4,341.80

Total Other Objects

\$4,341.80

Total 2800 Support Services – Central

\$8,852,415.79

Internal Service Fund (60)

2890 Other Support Services Central

Elementary

Secondary

Federal

Total

200 Personnel Services – Employee Benefits

270 Group Insurance – Self-Insurance

8,848,073.99

Total Personnel Services – Employee Benefits

\$8,848,073.99

800 Other Objects

810 Dues and Fees

4,341.80

Total Other Objects

\$4,341.80

Total 2890 Other Support Services Central

\$8,852,415.79

	<u>Food Service(51)</u>	<u>Child Care Operations(52)</u>	<u>Other Enterprise(58)</u>	<u>Internal Service(60)</u>	<u>Total</u>
2000 <u>Support Services</u>					
2800 Support Services - Central				8,852,415.79	8,852,415.79
Total Support Services				\$8,852,415.79	\$8,852,415.79
3000 <u>Operation of Non-Instructional Services</u>					
3100 Food Services	2,791,956.32				2,791,956.32
Total Operation of Non-Instructional Services	\$2,791,956.32				\$2,791,956.32
TOTAL ACTUAL EXPENDITURES & OTHER FINANCING USES	\$2,791,956.32			\$8,852,415.79	\$11,644,372.11

LEA : 113364503 Manheim Township SD

Printed 10/29/2021 8:09:24 AM

Fund	School	School Number	Local Personnel	Local Nonpersonnel	State Personnel	State Nonpersonnel	Federal Personnel	Federal Nonpersonnel	Total	Explanation
10	Brecht Sch	2619	2,874,935.49	459,086.45	761,319.27	121,571.90	20,424.69	33,815.05	4,271,152.85	
	Bucher Sch	6733	3,854,717.91	674,069.45	1,020,778.03	178,502.11	38,080.93	45,168.99	5,811,317.42	
	Landis Run Intermediate School	8246	7,536,755.10	1,508,436.54	1,995,828.03	399,453.07	82,528.10	116,778.36	11,639,779.20	
	Manheim Twp HS	2623	15,885,293.16	3,445,611.88	4,206,626.45	912,441.58	519,383.28	236,566.34	25,205,922.69	
	Manheim Twp MS	5114	9,187,350.50	1,583,934.62	2,432,926.56	419,445.91	209,608.36	116,874.50	13,950,140.45	
	Neff Sch	2621	2,982,743.38	540,230.09	789,868.16	143,059.76	24,081.85	39,108.11	4,519,091.35	
	Nitrauer Sch	4708	3,389,790.26	679,829.02	897,659.31	180,027.32	75,306.35	51,753.05	5,274,365.31	
	Reidenbaugh El Sch	7383	3,947,639.58	754,250.45	1,045,384.86	199,735.06	76,006.61	54,623.99	6,077,640.55	
	Schaeffer Sch	2620	2,989,608.42	532,907.21	791,686.10	141,120.56	23,514.24	37,567.62	4,516,404.15	
Total			52,648,833.80	10,178,355.71	13,942,076.77	2,695,357.27	1,068,934.41	732,256.01	81,265,813.97	