

LEA Name : Manheim Township SD  
Address : PO Box 5134  
Lancaster , PA 17606

County : Lancaster  
AUN Number : 113364503  
LEA Type : SD

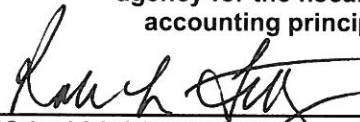
## Annual Financial Report Accuracy Certification Statement

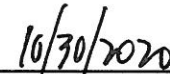
For Fiscal Year Ending  
**6/30/2020**

Pennsylvania Department of Education  
&  
Office of Comptroller Operations

PDE-2056: Intermediate Unit  
PDE-2057: School District, AVTS/CTC, Charter School,  
and Special Program Jointure

**CERTIFICATION: By signing this page I agree that the electronic data submitted is a complete and accurate statement of the financial operations and status of the local education agency for the fiscal year. It has been prepared in accordance with generally accepted accounting principles and established Commonwealth of PA reporting guidelines.**

  
\_\_\_\_\_  
Chief School Administrator Signature

  
\_\_\_\_\_  
Date

  
\_\_\_\_\_  
Board Secretary Signature

  
\_\_\_\_\_  
Date

Steve Brubaker  
\_\_\_\_\_  
Contact Person

(717)569-8231      Ext :3113  
\_\_\_\_\_  
Contact Person Telephone Number

brubakst@mtwp.net  
\_\_\_\_\_  
Contact Person E-mail Address

(717)569-3729  
\_\_\_\_\_  
Contact Person Fax Number

**Audit Certification**  
**Annual Financial Report:**  
For Fiscal Year Ending **6/30/2020**  
**(Pursuant to PA School Code Section 218(b))**

LEA Name : Manheim Township SD  
AUN Number : 113364503  
County : Lancaster

<b>Audit Certification Due:</b> 12/31/2020
---

**This certification is applicable to the Annual Financial Report data submitted through the Consolidated Financial Reporting System (CFRS).**

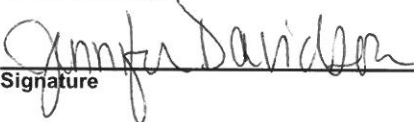
CERTIFICATION: By signing this page I agree that the financial statements of the school have been properly audited as noted above pursuant to Article XXIV, and in the auditor's professional opinion, the Annual Financial Report (PDE-2057) submitted through CFRS is materially consistent with the audited financial statements.

Chief School Administrator

  
\_\_\_\_\_  
Signature

12/14/2020  
\_\_\_\_\_  
Date

Board Secretary

  
\_\_\_\_\_  
Signature

12/17/2020  
\_\_\_\_\_  
Date

Steve Brubaker

\_\_\_\_\_  
Contact Person

brubakst@mtwp.net

\_\_\_\_\_  
Contact Person E-mail Address

(717)569-8231

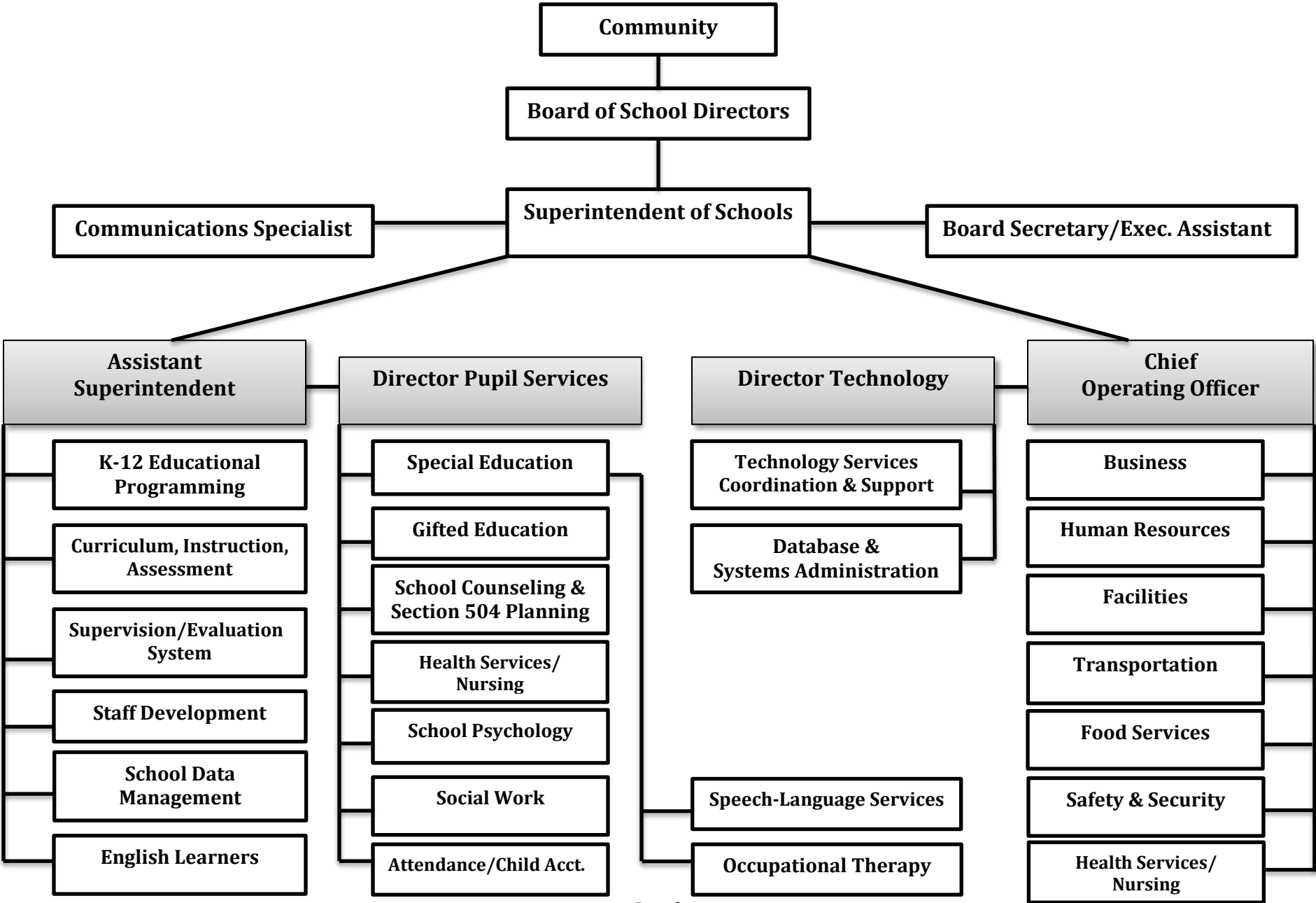
Ext :3113

\_\_\_\_\_  
Contact Person Telephone Number

(717)569-3729

\_\_\_\_\_  
Contact Person Fax Number

**MANHEIM TOWNSHIP SCHOOL DISTRICT**  
**Organizational Chart**  
**2020-2021**





Book	Policy Manual
Section	600 Finances
Title	GASB Statement 34
Code	622
Status	Active
Adopted	February 20, 2003
Last Revised	August 15, 2019

### **Purpose**

The Board recognizes the need to implement the required accounting and financial reporting standards stipulated by the Pennsylvania Department of Education.

The primary objectives of implementing the Governmental Accounting Standards Board (GASB) Statement 34 are to assure compliance with state requirements, and properly account for both the financial and economic resources of the District.

### **Authority**

Participation of the School District in any such activity shall be in accordance with Board policy. [1][2]

### **Delegation of Responsibility**

The responsibility to coordinate the compilation and preparation of all information necessary to implement this policy is delegated to the Chief Operating Officer or designee.

The designated individual shall be responsible for implementing the necessary procedures to establish and maintain a fixed asset inventory, including depreciation schedules. Depreciation shall be computed on a straight-line basis over the useful lives of the assets, using an averaging convention. Normal maintenance and repairs shall be charged to expense as incurred; major renewals and betterments that materially extend the life or increase the value of the asset shall be capitalized. A schedule of accumulated depreciation shall be consistent from year to year. The basis for depreciation, including groups of assets and useful lives, shall be in writing and submitted for review to the Board.

The Chief Operating Officer or designee shall prepare the required Management Discussion and Analysis (MD&A). The MD&A shall be in the form required by GASB Statement 34 and shall be submitted to the Board for approval, prior to publication.

Prior to submission of the MD&A with the district's annual audit the district's independent auditors shall review the MD&A, in accordance with SAS No. 52, "Required Supplementary Information."

<u>Val Number</u>	<u>Description</u>	<u>Justification</u>
12195	REG: Current Year AFR Beginning Fund Balance must equal Prior Year AFR Ending Fund Balance. Justifications to this error must fully explain the situation that prompted a fund balance restatement. "Auditor Adjustment" is not a sufficient justification.  Total Govt Funds, Beg Bal: \$67,489,310.00 PY Ending Bal, Govt Funds: \$67,473,256.00	Fund balance restated due to the implementation of GASB 84.
12196	REG - Fund 10: Current Year AFR Beginning Fund Balance must equal Prior Year AFR Ending Fund Balance. Justifications to this error must fully explain the situation that prompted a fund balance restatement. "Auditor Adjustment" is not a sufficient justification.  REG Fund 10, Beg Fund Bal: \$14,950,677.00 PY Ending Fund Balance: \$14,934,623.00	Fund balance restated due to the implementation of GASB 84.
16015	REP Fund 51: Object 300 is greater than object 500. Purchased services for food service contracted services should be coded to objects 571 and 572. Correct or enter a justification.  REP Fund 51 Object 300: \$30,671.00 REP Fund 51 Object 500: \$6,745.00	Expenses in object 300 are for temporary staffing services. Food service is not contracted.
42420	Expenditure Detail: Total current year 2700-513 expenditure varies from prior year by 10%. Correct the data or enter a justification.  2700-513, AFR Exp Detail: \$2,817,794.07 2700-513, PY AFR Amount: \$3,473,144.93	The District paid incurred less contracted transportation costs in 2019-2020 due to the state-mandated school closures resulting from the COVID-19 pandemic.
50160	SOIN: All Governmental Fund General Obligation Bonds must include an amount for Interest Paid during Fiscal Year. Correct data or enter a justification.	Series of 2020 bonds were issued in February 2020 and had no payments due in 2019-2020.
50430	SESS - 2160 Social Work Services: SESS Schedule amounts for Special Education vary from prior year by 40% or more. Correct the data or enter a justification.  SESS Schedule 2160: \$30,387.91 Prior Year SESS Schedule 2160: \$12,098.08	During 2019-2020, the District added an additional school social worker position.
50450	SESS - 2350 Legal and Accounting Services: SESS Schedule amounts for Special Education vary from prior year by 40% or more. Correct the data or enter a justification.  SESS Schedule 2350: \$28,611.16 Prior Year SESS Schedule 2350: \$85,636.53	The District incurred less legal fees directly related to special education cases in 2019-2020 than in the prior year.

Amounts Expressed in Whole Dollars

	<u>General Fund</u> <u>(10)</u>	<u>Student Sponsored</u> <u>Activity Fund</u> <u>(21)</u>	<u>Public Purpose Trust</u> <u>(27)</u>	<u>Other Compt Approved</u> <u>(28)</u>	<u>Athletic / Activity</u> <u>(29)</u>
<b>Assets And Deferred Outflows Of Resources</b>					
<b>Assets</b>					
0100 Cash and Cash Equivalents	10,335,994				
0110 Investments	12,450,000				
0120 Taxes Receivable	1,076,919				
0130 Due From Other Funds	12,875				
0141 Due From Other Governments	1,743,914				
0142 State Revenue Receivable	3,369,248				
0143 Federal Revenue Receivable	149,226				
0145 Other Intergovernmental Revenue Receivable					
0146 Due from Primary Government					
0147 Due from Component Unit					
0150 Other Receivables	54,557				
0170 Inventories	5,749				
0180 Prepaid Expenses (Expenditures)	44,679				
0190 Other Current Assets					
<b>Total Assets</b>	<b>\$29,243,161</b>				
0910 Deferred Outflows of Resources					
<b>Total Assets And Deferred Outflows Of Resources</b>	<b>\$29,243,161</b>				



Amounts Expressed in Whole Dollars

**Total Governmental Funds**

**Assets And Deferred Outflows Of Resources**

<b>Assets</b>	
0100 Cash and Cash Equivalents	48,416,401
0110 Investments	12,950,000
0120 Taxes Receivable	1,076,919
0130 Due From Other Funds	12,875
0141 Due From Other Governments	1,743,914
0142 State Revenue Receivable	3,369,248
0143 Federal Revenue Receivable	149,226
0145 Other Intergovernmental Revenue Receivable	
0146 Due from Primary Government	
0147 Due from Component Unit	
0150 Other Receivables	54,557
0170 Inventories	5,749
0180 Prepaid Expenses (Expenditures)	44,679
0190 Other Current Assets	
<b>Total Assets</b>	<b>\$67,823,568</b>
0910 Deferred Outflows of Resources	
<b>Total Assets And Deferred Outflows Of Resources</b>	<b>\$67,823,568</b>



Amounts Expressed in Whole Dollars	<u>General Fund</u> <u>(10)</u>	<u>Student Sponsored</u> <u>Activity Fund</u> <u>(21)</u>	<u>Public Purpose Trust</u> <u>(27)</u>	<u>Other Compt Approved</u> <u>(28)</u>	<u>Athletic / Activity</u> <u>(29)</u>
<b>Liabilities And Deferred Inflows Of Resources And Fund Balances</b>					
<b>Liabilities</b>					
0400 Due to Other Funds	959,424				
0411 Due to Other Governments	404,526				
0412 Due to Primary Government					
0413 Due to Component Unit					
0420 Accounts Payable	955,639				
0430 Contracts Payable					
0440 Current Portion of Long-Term Debt					
0450 Short-Term Payables					
0461 Accrued Salaries and Benefits	10,412,404				
0462 Payroll Deductions and Withholding	398,057				
0480 Unearned Revenues	123,825				
0490 Other Current Liabilities	92,355				
<b>Total Liabilities</b>	<b>\$13,346,230</b>				
0950 Deferred Inflows of Resources	914,048				
<b>Fund Balances</b>					
0810 Nonspendable Fund Balance	50,428				
0820 Restricted Fund Balance					
0830 Committed Fund Balance	6,752,521				
0840 Assigned Fund Balance	26,307				
0850 Unassigned Fund Balance	8,153,627				
<b>Total Fund Balances</b>	<b>\$14,982,883</b>				
<b>Total Liabilities, Deferred Inflows Of Resources And Fund Balances</b>	<b>\$29,243,161</b>				

Amounts Expressed in Whole Dollars

<u>Capital Reserve (690.</u>	<u>Capital Reserve (1431)</u>	<u>Other Capital Projects</u>	<u>Debt Service</u>	<u>Permanent</u>
<u>1850)</u>	<u>(32)</u>	<u>Fund</u>	<u>(40)</u>	<u>(90)</u>
<u>(31)</u>		<u>(39)</u>		

**Liabilities And Deferred Inflows Of Resources And Fund Balances**

**Liabilities**

0400 Due to Other Funds		
0411 Due to Other Governments		
0412 Due to Primary Government		
0413 Due to Component Unit		
0420 Accounts Payable	420,579	3,645,359
0430 Contracts Payable		
0440 Current Portion of Long-Term Debt		
0450 Short-Term Payables		
0461 Accrued Salaries and Benefits		
0462 Payroll Deductions and Withholding		
0480 Unearned Revenues		
0490 Other Current Liabilities		

<b>Total Liabilities</b>	<b>\$420,579</b>	<b>\$3,645,359</b>
--------------------------	------------------	--------------------

0950 Deferred Inflows of Resources

**Fund Balances**

0810 Nonspendable Fund Balance		
0820 Restricted Fund Balance	7,766,940	26,747,529
0830 Committed Fund Balance		
0840 Assigned Fund Balance		
0850 Unassigned Fund Balance		

<b>Total Fund Balances</b>	<b>\$7,766,940</b>	<b>\$26,747,529</b>
----------------------------	--------------------	---------------------

<b>Total Liabilities, Deferred Inflows Of Resources And Fund Balances</b>	<b>\$8,187,519</b>	<b>\$30,392,888</b>
---	--------------------	---------------------

Amounts Expressed in Whole Dollars

**Total Governmental Funds**

**Liabilities And Deferred Inflows Of Resources And Fund Balances**

**Liabilities**

0400 Due to Other Funds	959,424
0411 Due to Other Governments	404,526
0412 Due to Primary Government	
0413 Due to Component Unit	
0420 Accounts Payable	5,021,577
0430 Contracts Payable	
0440 Current Portion of Long-Term Debt	
0450 Short-Term Payables	
0461 Accrued Salaries and Benefits	10,412,404
0462 Payroll Deductions and Withholding	398,057
0480 Unearned Revenues	123,825
0490 Other Current Liabilities	92,355

**Total Liabilities \$17,412,168**

0950 Deferred Inflows of Resources	914,048
------------------------------------	---------

**Fund Balances**

0810 Nonspendable Fund Balance	50,428
0820 Restricted Fund Balance	34,514,469
0830 Committed Fund Balance	6,752,521
0840 Assigned Fund Balance	26,307
0850 Unassigned Fund Balance	8,153,627

**Total Fund Balances \$49,497,352**

**Total Liabilities, Deferred Inflows Of Resources And Fund Balances \$67,823,568**

Amounts Expressed in Whole Dollars	<u>General Fund</u> <u>(10)</u>	<u>Student Sponsored</u> <u>Activity Fund</u> <u>(21)</u>	<u>Public Purpose Trust</u> <u>(27)</u>	<u>Other Compt Approved</u> <u>(28)</u>	<u>Athletic / Activity</u> <u>(29)</u>
<b>Revenues</b>					
6000 Revenue from Local Sources	78,558,805				
7000 Revenue from State Sources	21,037,209				
8000 Revenue from Federal Sources	956,493				
<b>Total Revenues</b>	<b>\$100,552,507</b>				
<b>Expenditures</b>					
1000 Instruction	54,467,445				
2000 Support Services	29,296,268				
3000 Operation of Non-Instructional Services	1,578,935				
4000 Facilities Acquisition, Construction and Improvement Services	39,939				
5110 Debt Service	14,945,525				
5130 Refund of Prior Year Revenues / Receipts	926				
<b>Total Expenditures</b>	<b>\$100,329,038</b>				
<b>Excess (Deficiency) Of Revenues Over Expenditures</b>	<b>\$223,469</b>				
<b>Other Financing Sources (Uses)</b>					
9110 Face Value of Bonds Issued					
9120 Proceeds from Refunding of Bonds					
9130 Bond Premiums					
9200 Proceeds from Extended-Term Financing					
9300 Interfund Transfers - IN					
9400 Sale of or Compensation for Loss of Fixed Assets	28,025				
9710 Transfers from Component Units					
9720 Transfers from Primary Governments					
9910 Other Financing Sources Not Listed in the 9000 Series					
9990 Insurance Recoveries	67,699				
5120 Debt Service – Refunded Bonds					
5150 Bond Discounts					
5200 Interfund Transfers – Out	286,987				
5300 Transfers Out to Component Units/Primary Governments					
<b>Total Other Financing Sources (Uses)</b>	<b>(\$191,263)</b>				

Amounts Expressed in Whole Dollars	<u>Capital Reserve (690.1850)</u> <u>(31)</u>	<u>Capital Reserve (1431)</u> <u>(32)</u>	<u>Other Capital Projects</u> <u>Fund</u> <u>(39)</u>	<u>Debt Service</u> <u>(40)</u>	<u>Permanent</u> <u>(90)</u>
<b>Revenues</b>					
6000 Revenue from Local Sources		123,337	582,133		
7000 Revenue from State Sources					
8000 Revenue from Federal Sources					
<b>Total Revenues</b>		<b>\$123,337</b>	<b>\$582,133</b>		
<b>Expenditures</b>					
1000 Instruction					
2000 Support Services			87,549	225,818	
3000 Operation of Non-Instructional Services					
4000 Facilities Acquisition, Construction and Improvement Services		1,646,829	24,863,325		
5110 Debt Service				8,280	
5130 Refund of Prior Year Revenues / Receipts					
<b>Total Expenditures</b>		<b>\$1,646,829</b>	<b>\$24,950,874</b>	<b>\$234,098</b>	
<b>Excess (Deficiency) Of Revenues Over Expenditures</b>		<b>(\$1,523,492)</b>	<b>(\$24,368,741)</b>	<b>(\$234,098)</b>	
<b>Other Financing Sources (Uses)</b>					
9110 Face Value of Bonds Issued			6,227,121		
9120 Proceeds from Refunding of Bonds				20,617,879	
9130 Bond Premiums			1,362,241	3,513,674	
9200 Proceeds from Extended-Term Financing					
9300 Interfund Transfers - IN		286,987			
9400 Sale of or Compensation for Loss of Fixed Assets					
9710 Transfers from Component Units					
9720 Transfers from Primary Governments					
9910 Other Financing Sources Not Listed in the 9000 Series					
9990 Insurance Recoveries					
5120 Debt Service – Refunded Bonds				23,905,735	
5150 Bond Discounts					
5200 Interfund Transfers – Out					
5300 Transfers Out to Component Units/Primary Governments					
<b>Total Other Financing Sources (Uses)</b>		<b>\$286,987</b>	<b>\$7,589,362</b>	<b>\$225,818</b>	

Amounts Expressed in Whole Dollars	<u>Total Governmental Funds</u>
<b>Revenues</b>	
6000 Revenue from Local Sources	79,264,275
7000 Revenue from State Sources	21,037,209
8000 Revenue from Federal Sources	956,493
<b>Total Revenues</b>	<b>\$101,257,977</b>
<b>Expenditures</b>	
1000 Instruction	54,467,445
2000 Support Services	29,609,635
3000 Operation of Non-Instructional Services	1,578,935
4000 Facilities Acquisition, Construction and Improvement Services	26,550,093
5110 Debt Service	14,953,805
5130 Refund of Prior Year Revenues / Receipts	926
<b>Total Expenditures</b>	<b>\$127,160,839</b>
<b>Excess (Deficiency) Of Revenues Over Expenditures</b>	<b>(\$25,902,862)</b>
<b>Other Financing Sources (Uses)</b>	
9110 Face Value of Bonds Issued	6,227,121
9120 Proceeds from Refunding of Bonds	20,617,879
9130 Bond Premiums	4,875,915
9200 Proceeds from Extended-Term Financing	
9300 Interfund Transfers - IN	286,987
9400 Sale of or Compensation for Loss of Fixed Assets	28,025
9710 Transfers from Component Units	
9720 Transfers from Primary Governments	
9910 Other Financing Sources Not Listed in the 9000 Series	
9990 Insurance Recoveries	67,699
5120 Debt Service – Refunded Bonds	23,905,735
5150 Bond Discounts	
5200 Interfund Transfers – Out	286,987
5300 Transfers Out to Component Units/Primary Governments	
<b>Total Other Financing Sources (Uses)</b>	<b>\$7,910,904</b>

Amounts Expressed in Whole Dollars	<u>General Fund</u> <u>(10)</u>	<u>Student Sponsored</u> <u>Activity Fund</u> <u>(21)</u>	<u>Public Purpose Trust</u> <u>(27)</u>	<u>Other Compt Approved</u> <u>(28)</u>	<u>Athletic / Activity</u> <u>(29)</u>
<b>Special And Extraordinary Items</b>					
9920 Special Items – Gains					
9930 Extraordinary Items – Gains					
5520 Special Items – Losses					
5530 Extraordinary Items – Losses					
<b>Net Change In Fund Balances</b>	<b>\$32,206</b>				
<b>Fund Balance</b>					
0001 Fund Balance - Beginning of Fiscal Year	14,950,677				
<b>Fund Balance - End Of Year</b>	<b>\$14,982,883</b>				

Amounts Expressed in Whole Dollars	<u>Capital Reserve (690.1850)</u> <u>(31)</u>	<u>Capital Reserve (1431)</u> <u>(32)</u>	<u>Other Capital Projects</u> <u>Fund</u> <u>(39)</u>	<u>Debt Service</u> <u>(40)</u>	<u>Permanent</u> <u>(90)</u>
<b>Special And Extraordinary Items</b>					
9920 Special Items – Gains					
9930 Extraordinary Items – Gains					
5520 Special Items – Losses					
5530 Extraordinary Items – Losses					
<b>Net Change In Fund Balances</b>		(\$1,236,505)	(\$16,779,379)	(\$8,280)	
<b>Fund Balance</b>					
0001 Fund Balance - Beginning of Fiscal Year		9,003,445	43,526,908	8,280	
<b>Fund Balance - End Of Year</b>		<b>\$7,766,940</b>	<b>\$26,747,529</b>		



Amounts Expressed in Whole Dollars	<u>Total Governmental Funds</u>
<b>Special And Extraordinary Items</b>	
9920 Special Items – Gains	
9930 Extraordinary Items – Gains	
5520 Special Items – Losses	
5530 Extraordinary Items – Losses	
<b>Net Change In Fund Balances</b>	<b>(\$17,991,958)</b>
<b>Fund Balance</b>	
0001 Fund Balance - Beginning of Fiscal Year	67,489,310
<b>Fund Balance - End Of Year</b>	<b>\$49,497,352</b>

Amounts Expressed in Whole Dollars	<u>Food Service</u> <u>(51)</u>	<u>Child Care</u> <u>Operations</u> <u>(52)</u>	<u>Other Enterprise</u> <u>(58)</u>	<u>TOTAL</u>	<u>Internal Service</u> <u>(60)</u>
<b>Assets And Deferred Outflows Of Resources</b>					
<b>Current Assets</b>					
0100 Cash and Cash Equivalents	1,287,177			1,287,177	1,401
0110 Investments					
0130 Due From Other Funds	79,402			79,402	880,022
0141 Due From Other Governments					198,903
0142 State Revenue Receivable	2,853			2,853	
0143 Federal Revenue Receivable	60,942			60,942	
0146 Due from Primary Government					
0147 Due from Component Unit					
0150 Other Receivables	1,380			1,380	191,979
0170 Inventories	73,969			73,969	
0180 Prepaid Expenses (Expenditures)					55,837
0190 Other Current Assets					
<b>Total Current Assets</b>	<b>\$1,505,723</b>			<b>\$1,505,723</b>	<b>\$1,328,142</b>
<b>Noncurrent Assets</b>					
0211 Land					
0212 Site Improvements (Net)					
0220 Buildings and Building Improvements (Net)					
0230 Machinery, Equipment and Furniture (Net)	439,119			439,119	
0250 Construction in Progress					
0260 Long Term Prepayments					
0290 Other Noncurrent Assets					
<b>Total Noncurrent Assets</b>	<b>\$439,119</b>			<b>\$439,119</b>	
0910 Deferred Outflows of Resources	456,580			456,580	
<b>Total Assets And Deferred Outflows Of Resources</b>	<b>\$2,401,422</b>			<b>\$2,401,422</b>	<b>\$1,328,142</b>

Amounts Expressed in Whole Dollars	<u>Food Service</u> <u>(51)</u>	<u>Child Care</u> <u>Operations</u> <u>(52)</u>	<u>Other Enterprise</u> <u>(58)</u>	<u>TOTAL</u>	<u>Internal Service</u> <u>(60)</u>
<b>Liabilities And Deferred Inflows Of Resources And Net Position</b>					
<b>Current Liabilities</b>					
0400 Due to Other Funds	11,177			11,177	
0411 Due to Other Governments					
0413 Due to Component Unit					
0420 Accounts Payable	15,470			15,470	602,525
0430 Contracts Payable					
0440 Current Portion of Long-Term Debt					
0450 Short-Term Payables					
0461 Accrued Salaries and Benefits	36,034			36,034	
0462 Payroll Deductions and Withholding					
0480 Unearned Revenues	94,351			94,351	38,155
0490 Other Current Liabilities					
<b>Total Current Liabilities</b>	<b>\$157,032</b>			<b>\$157,032</b>	<b>\$640,680</b>
<b>Noncurrent Liabilities</b>					
0510 Bonds Payable					
0520 Extended-Term Financing Agreements Payable					
0530 Lease-Purchase Obligations					
0540 Accumulated Compensated Absences					
0550 Authority Lease Obligations					
0560 Other Post-Employment Benefits (OPEB)	180,772			180,772	
0570 Net Pension Liability	2,714,000			2,714,000	
0599 Other Noncurrent Liabilities					
<b>Total Noncurrent Liabilities</b>	<b>\$2,894,772</b>			<b>\$2,894,772</b>	
<b>Total Liabilities</b>	<b>\$3,051,804</b>			<b>\$3,051,804</b>	<b>\$640,680</b>
0950 Deferred Inflows of Resources	204,152			204,152	
<b>Net Position</b>					
0791 Net Investment in Capital Assets	439,119			439,119	
0008 Restricted Net Position (0792 – 0798)					
0799 Unrestricted Net Position	(1,293,653)			(1,293,653)	687,462
<b>Total Net Position</b>	<b>(\$854,534)</b>			<b>(\$854,534)</b>	<b>\$687,462</b>
<b>Total Liabilities And Deferred Inflows Of Resources And Net Position</b>	<b>\$2,401,422</b>			<b>\$2,401,422</b>	<b>\$1,328,142</b>

Amounts Expressed in Whole Dollars	<u>Food Service</u> <u>(51)</u>	<u>Child Care Operations</u> <u>(52)</u>	<u>Other Enterprise</u> <u>(58)</u>	<u>TOTAL</u>	<u>Internal Service</u> <u>(60)</u>
<b>Operating Revenues</b>					
6600 Food Service Revenue	803,406			803,406	
0071 Charges for Services	37,911			37,911	8,009,306
0072 Other Operating Revenue					
<b>Total Operating Revenues</b>	<b>\$841,317</b>			<b>\$841,317</b>	<b>\$8,009,306</b>
<b>Operating Expenses</b>					
100 Personnel Services – Salaries	917,090			917,090	
200 Personnel Services – Employee Benefits	626,727			626,727	7,509,681
300 Purchased Professional and Technical Services	30,671			30,671	
400 Purchased Property Services	62,628			62,628	
500 Other Purchased Services	6,745			6,745	
600 Supplies	963,703			963,703	
740 Depreciation	100,983			100,983	
810 Dues and Fees	2,282			2,282	4,144
890 Miscellaneous Expenditures					
<b>Total Operating Expenses</b>	<b>\$2,710,829</b>			<b>\$2,710,829</b>	<b>\$7,513,825</b>
<b>Operating Income (Loss)</b>	<b>(\$1,869,512)</b>			<b>(\$1,869,512)</b>	<b>\$495,481</b>
<b>Non Operating Revenues (Expenses)</b>					
6500 Earnings on Investments	21,962			21,962	2
6920 Contributions and Donations from Private Sources	5,000			5,000	
6930 Gains or Losses on Sale of Fixed Assets					
6991 Refunds of a Prior Year Expenditure					191,979
7000 Revenue from State Sources	239,644			239,644	
8000 Revenue from Federal Sources	1,247,971			1,247,971	
9990 Insurance Recoveries					
820 Claims and Judgments Against the LEA					
830 Interest					
<b>TOTAL Non Operating Revenues (Expenses)</b>	<b>\$1,514,577</b>			<b>\$1,514,577</b>	<b>\$191,981</b>
<b>Income (Loss) Before Contributions And Transfers</b>	<b>(\$354,935)</b>			<b>(\$354,935)</b>	<b>\$687,462</b>

Amounts Expressed in Whole Dollars	<u>Food Service</u> <u>(51)</u>	<u>Child Care Operations</u> <u>(52)</u>	<u>Other Enterprise</u> <u>(58)</u>	<u>TOTAL</u>	<u>Internal Service</u> <u>(60)</u>
<b>Contributions, Transfers, and Special and Extraordinary Items</b>					
5200 Interfund Transfers – Out					
5300 Transfers Out to Component Units/Primary Governments					
5520 Special Items – Losses					
5530 Extraordinary Items – Losses					
9300 Interfund Transfers - IN					
9500 Capital Contributions					
9700 Transfers IN From Component Units/Primary Governments					
9920 Special Items – Gains					
9930 Extraordinary Items – Gains					
<b>Change In Net Position</b>	<b>(\$354,935)</b>			<b>(\$354,935)</b>	<b>\$687,462</b>
0002 Net Position - Beginning of Fiscal Year	(499,599)			(499,599)	
0003 Accounting Changes / Residual Equity Transfers					
<b>Net Position - End Of Year</b>	<b>(\$854,534)</b>			<b>(\$854,534)</b>	<b>\$687,462</b>

Amounts Expressed in Whole Dollars	<u>Food Service</u> <u>(51)</u>	<u>Child Care Operations</u> <u>(52)</u>	<u>Other Enterprise</u> <u>(58)</u>	<u>TOTAL</u>	<u>Internal Service(60)</u>
<b>Cash Flows From Operating Activities</b>					
0011 Cash Receipts From Users	868,986			868,986	
0012 Cash Receipts From Assessments Made to Other Funds					7,848,558
0013 Cash Receipts From Earnings on Investments					
0014 Cash Receipts From Other Operating Revenue	37,911			37,911	
0015 Cash Payments To Employees For Services	1,589,726			1,589,726	
0016 Cash Payments For Insurance Claims					7,843,015
0017 Cash Payments To Suppliers For Goods and Services	1,044,581			1,044,581	4,144
0018 Cash Payments For Other Operating Expenses					
<b>Net Cash Provided By (Used For) Operating Activities</b>	<b>(\$1,727,410)</b>			<b>(\$1,727,410)</b>	<b>\$1,399</b>
<b>Cash Flows From Non-Capital Financing Activities</b>					
0021 Receipts From Local Sources - 6000	5,000			5,000	
0022 Receipts From State Sources - 7000	240,293			240,293	
0023 Receipts From Federal Sources -8000	1,066,108			1,066,108	
0024 Notes and Loans Received (Repaid)					
0025 Interest Paid on Notes/Loans - 5100-830					
0026 Operating Transfers In (Out)/Residual Equity Trans					
0027 Operating Transfers In (Out) Primary Government / Comp Unit					
0028 Receipts From Refund of Prior Year Expenditures - 6991					
0029 Special and Extraordinary Gains (losses)					
0030 Receipts from Insurance Recoveries -9990					
<b>Net Cash Prov By (Used for) Non-Capital Financing Activities</b>	<b>\$1,311,401</b>			<b>\$1,311,401</b>	
<b>Cash Flows From Capital and Related Financing Activities</b>					
0031 Payments For Fac Acq, Const, and Imp - 4000	(63,944)			(63,944)	
0032 Gain / (Loss) on Sale of Fixed Assets - 6930					
0033 Proceeds From Extended Term Financing - 9200					
0034 Principal Paid on Financing Agreements					
0035 Interest Paid on Financing Agreements - 5100-830					
0036 (Inc) Dec in Contributed Capital					
<b>Net Cash Prov By (Used for) Capital and Related Financing Activities</b>	<b>(\$63,944)</b>			<b>(\$63,944)</b>	
<b>Cash Flows From Investing Activities</b>					
0041 Earnings on Investments - 6500	21,962			21,962	2
0042 Purchase of Inv Securities / Deposits to Inv Pools					
0043 Receipts From Investment Pool Withdrawals					
0044 Proceeds from Sale and Maturity of Inv Securities					

LEA : 113364503 Manheim Township SD

Printed 10/30/2020 2:42:33 PM

0045 Loans Received (Paid)

<b>Net Cash Prov By (Used for) Investing Activities</b>	<b>\$21,962</b>	<b>\$21,962</b>	<b>\$2</b>
---	-----------------	-----------------	------------

	<u>Food Service</u> <u>(51)</u>	<u>Child Care Operations</u> <u>(52)</u>	<u>Other Enterprise</u> <u>(58)</u>	<u>TOTAL</u>	<u>Internal Service</u> <u>(60)</u>
<b>Net Increase (Decrease) in Cash Flows</b>	<b>(457,991)</b>			<b>(457,991)</b>	<b>1,401</b>
0004 Cash and Cash Equivalents Beginning of Year	1,745,168			1,745,168	
<b>Cash and Cash Equivalents at Year End</b>	<b>\$1,287,177</b>			<b>\$1,287,177</b>	<b>\$1,401</b>
<hr/>					
<b>Reconciliation of Operating Income (Loss) To Net Cash Provided by (Used For) Operating Activities</b>					
0005 Operating Income (Loss) per REP	(1,869,512)			(1,869,512)	495,481
<b>Adjustments</b>					
0051 Depreciation and Net Amortization	100,983			100,983	
0052 Provision for Uncollectible Accounts					
0053 Other Adjustments	143,633			143,633	
<b>Effect of Changes in Assets, Liabilities, Deferred Outflows and Deferred Inflows</b>					
0054 (Inc) Dec In Accounts Receivable (0120-0150)	(72,497)			(72,497)	(1,078,925)
0055 Advances to Other Funds (0160)					
0056 (Inc) Dec in Inventories (0170)	(24,714)			(24,714)	
0057 (Inc) Dec in Prepaid Expenses (0180)	3,505			3,505	(55,837)
0058 (Inc) Dec in Other Current or Noncurrent Assets					
0064 Deferred Outflows (0910)	157,045			157,045	
0059 Inc (Dec) in Accounts Payable (0400-0450)	(10,640)			(10,640)	602,525
0060 Inc (Dec) in Accrued Salaries/Benefits (0461)	13,019			13,019	
0065 Inc (Dec) in Net Pension Liabilities (0570)	(185,000)			(185,000)	
0066 Inc (Dec) in Other Postemp Benefit Oblig (0560)	(178,816)			(178,816)	
0061 Inc (Dec) in Payroll Deductions/Withholding (0462)					
0062 Inc (Dec) in Unearned Revenue (0480)	47,837			47,837	38,155
0063 Inc (Dec) in Other Current or Noncurrent Liabilities	(96)			(96)	
0067 Deferred Inflows (0950)	147,843			147,843	
<b>Total Adjustments</b>	<b>\$142,102</b>			<b>\$142,102</b>	<b>(\$494,082)</b>
<b>Cash Provided By (Used for) Total</b>	<b>(\$1,727,410)</b>			<b>(\$1,727,410)</b>	<b>\$1,399</b>



COMBINED STATEMENT OF CASH FLOWS  
SCHEDULE OF NONCASH INVESTING, CAPITAL, AND FINANCING ACTIVITIES

Explanation of Transaction and Balance Sheet Effect	Amount
USDA Donated Commodities	143,633
<b>Total</b>	<b>\$143,633</b>

LEA : 113364503 Manheim Township SD

Printed 10/30/2020 2:42:36 PM

Amounts Expressed in Whole Dollars

	<u>Private Purpose Trust</u> <u>(71)</u>	<u>Investment Trust</u> <u>(72)</u>	<u>Pension Trust</u> <u>(73)</u>	<u>Student Activity Custodial</u> <u>(81)</u>
<b>Assets And Deferred Outflows Of Resources</b>				
<b>Assets</b>				
0100 Cash and Cash Equivalents	174,338			148,819
0110 Investments	8,600			
0130 Due From Other Funds				
0140 Due from Other Governments, Primary Government and Component Units				
0150 Other Receivables				8,062
0170 Inventories				
0180 Prepaid Expenses (Expenditures)				
0190 Other Current Assets				
0220 Buildings and Building Improvements (Net)				
0230 Machinery, Equipment and Furniture (Net)				
<b>Total Assets</b>	<b>\$182,938</b>			<b>\$156,881</b>
0910 Deferred Outflows of Resources				
<b>Total Assets And Deferred Outflows Of Resources</b>	<b>\$182,938</b>			<b>\$156,881</b>



LEA : 113364503 Manheim Township SD

Printed 10/30/2020 2:42:36 PM

Amounts Expressed in Whole Dollars

Private Purpose Trust  
(71)

Investment Trust  
(72)

Pension Trust  
(73)

Student Activity Custodial  
(81)

**Liabilities, Deferred Inflows Of Resources And Net Position**

**Liabilities**

0400 Due to Other Funds				1,698
0410 Due to Other Governments, Primary Government and Component Units				
0420 Accounts Payable				
0430 Contracts Payable				
0450 Short-Term Payables				
0460 Payroll Accruals and Withholdings				
0480 Unearned Revenues				
0490 Other Current Liabilities				

<b>Total Liabilities</b>				<b>\$1,698</b>
--------------------------	--	--	--	----------------

0950 Deferred Inflows of Resources

**Net Position**

0791 Net Investment in Capital Assets				
0009 Restricted Net Position (0792 – 0798)	182,938			155,183
0799 Unrestricted Net Position				

<b>Total Net Position</b>	<b>\$182,938</b>			<b>\$155,183</b>
---------------------------	------------------	--	--	------------------

<b>Total Liabilities, Deferred Inflows Of Resources And Net Position</b>	<b>\$182,938</b>			<b>\$156,881</b>
--	------------------	--	--	------------------

LEA : 113364503 Manheim Township SD

Printed 10/30/2020 2:42:36 PM

Amounts Expressed in Whole Dollars	<u>Other Custodial</u> <u>(89)</u>	<u>Fiduciary Component Units</u> <u>(98)</u>	<u>Total Fiduciary Funds</u>
<b>Liabilities, Deferred Inflows Of Resources And Net Position</b>			
<b>Liabilities</b>			
0400 Due to Other Funds			1,698
0410 Due to Other Governments, Primary Government and Component Units			
0420 Accounts Payable			
0430 Contracts Payable			
0450 Short-Term Payables			
0460 Payroll Accruals and Withholdings			
0480 Unearned Revenues			
0490 Other Current Liabilities			
<b>Total Liabilities</b>			<b>\$1,698</b>
0950 Deferred Inflows of Resources			
<b>Net Position</b>			
0791 Net Investment in Capital Assets			
0009 Restricted Net Position (0792 – 0798)			338,121
0799 Unrestricted Net Position			
<b>Total Net Position</b>			<b>\$338,121</b>
<b>Total Liabilities, Deferred Inflows Of Resources And Net Position</b>			<b>\$339,819</b>

Amounts Expressed in Whole Dollars	<u>Private Purpose Trust</u> <u>(71)</u>	<u>Investment Trust</u> <u>(72)</u>	<u>Pension Trust</u> <u>(73)</u>	<u>Student Activity</u> <u>Custodial</u> <u>(81)</u>	<u>Other Custodial</u> <u>(89)</u>	<u>Fiduciary Component</u> <u>Units</u> <u>(98)</u>
<b>Additions</b>						
0091 Gifts and Contributions	8,502					
0095 Net Investment Earnings	2,280			1,605		
0092 Other Additions				151,742		
<b>Deductions</b>						
0093 Scholarships Awarded	9,050					
0094 Other Deductions				140,526		
<b>Change In Net Position</b>	<b>\$1,732</b>			<b>\$12,821</b>		
0006 Net Position – Beginning of Fiscal Year	181,206			142,362		
0007 Net Position Held in Trust for Pension Benefits						
<b>Net Position - End of Fiscal Year</b>	<b>\$182,938</b>			<b>\$155,183</b>		

Amounts Expressed in Whole Dollars	<u>Total Fiduciary Funds</u>
<b>Additions</b>	
0091 Gifts and Contributions	8,502
0095 Net Investment Earnings	3,885
0092 Other Additions	151,742
<b>Deductions</b>	
0093 Scholarships Awarded	9,050
0094 Other Deductions	140,526
<b>Change in Net Position</b>	<b>\$14,553</b>
0006 Net Position – Beginning of Fiscal Year	323,568
0007 Net Position Held in Trust for Pension Benefits	
<b>Net Position - End of Fiscal Year</b>	<b>\$338,121</b>

	<u>Revenue Reported In Current Year</u>	<u>Current Year Tax Accrual</u>	<u>Prior Year Tax Accrual</u>	<u>Taxes Collected In Current Year</u>
<b><u>Revenue from Local Sources</u></b>				
6111 Current Real Estate Taxes	64,836,389.63			64,836,389.63
6112 Interim Real Estate Taxes	546,809.38	122,978.52	147,559.85	571,390.71
6113 Public Utility Realty Taxes	64,856.58			64,856.58
6114 Payments in Lieu of Current Taxes - State / Local	254,088.21			254,088.21
6143 Current Act 511 Local Services Taxes	273,949.15	56,726.79	74,795.83	292,018.19
6151 Current Act 511 Earned Income Taxes	7,886,736.53	1,584,297.02	1,400,546.88	7,702,986.39
6153 Current Act 511 Real Estate Transfer Taxes	1,249,055.66	75,699.16	164,867.87	1,338,224.37
6411 Delinquent Real Estate Taxes	328,173.10	138,120.60	166,532.28	356,584.78
6500 Earnings on Investments	675,547.63			
6700 Revenues from LEA Activities	129,703.55			
6832 Federal IDEA Revenue Received as Pass Through	863,763.00			
6839 Federal Revenue Received from Other Sources	64,546.41			
6910 Rentals	651,597.17			
6920 Contributions and Donations from Private Sources	181,336.02			
6942 Summer School Tuition	86,725.00			
6944 Receipts from Other LEAs in Pennsylvania - Education	80,521.23			
6961 Transportation Services Provided Other Pennsylvania LEAs	28,755.02			
6991 Refunds of a Prior Year Expenditure	204,298.85			
6999 Other Revenues Not Specified Above	151,952.96			
<b>TOTAL Revenue from Local Sources</b>	<b>\$78,558,805.08</b>	<b>\$1,977,822.09</b>	<b>\$1,954,302.71</b>	<b>\$75,416,538.86</b>



**Revenue Reported  
In Current Year**

**Revenue from State Sources**

7111 Basic Education Funding-Formula	6,096,749.20		
7112 Basic Education Funding-Social Security	1,393,987.38		
7160 Tuition for Orphans Subsidy	147,911.15		
7250 Migratory Children	680.00		
7271 Special Education funds for School-Aged Pupils	2,414,599.39		
7311 Pupil Transportation Subsidy	1,102,062.76		
7312 Nonpublic and Charter School Pupil Transportation Subsidy	197,505.00		
7320 Rental and Sinking Fund Payments / Building Reimbursement Subsidy	928,111.27		
7330 Health Services (Medical, Dental, Nurse, Act 25)	115,502.98		
7340 State Property Tax Reduction Allocation	1,115,571.56		
7361 School Safety and Security Grants	144,235.39		
7505 Ready to Learn Block Grant	474,037.00		
7820 State Share of Retirement Contributions	6,906,255.44		
<b>TOTAL Revenue from State Sources</b>	<b>\$21,037,208.52</b>		

**Revenue Reported  
In Current Year**

**Revenue from Federal Sources**

8514 NCLB, Title I - Improving the Academic Achievement of the Disadvantaged	685,923.29			
8515 NCLB, Title II - Preparing, Training and Recruiting High Quality Teachers and Principals	122,269.19			
8516 NCLB, Title III - Language Instruction for Limited English Proficient and Immigrant Students	29,228.00			
8517 NCLB, Title IV - 21St Century Schools	58,768.32			
8749 Other CARES Act Funding	60,304.30			
<b>TOTAL Revenue from Federal Sources</b>	<b>\$956,493.10</b>			

	<b>Revenue Reported In Current Year</b>			
<b>Other Financing Sources</b>				
9400 Sale of or Compensation for Loss of Fixed Assets	28,025.00			
9990 Insurance Recoveries	67,698.74			
<b>TOTAL Other Financing Sources</b>	<b>\$95,723.74</b>			
<b>TOTAL FROM ALL SOURCES</b>	<b>\$100,648,230.44</b>	<b>\$1,977,822.09</b>	<b>\$1,954,302.71</b>	<b>\$75,416,538.86</b>

	<u>General Fund (10)</u>	<u>Student Sponsored Activity Fund (21)</u>	<u>Public Purpose Trust (27)</u>	<u>Other Compt Approved (28)</u>	<u>Athletic / Activity (29)</u>	<u>Capital Reserve (690, 1850) (31)</u>
<b>6000 Revenue from Local Sources</b>						
6111 Current Real Estate Taxes	64,836,389.63					
6112 Interim Real Estate Taxes	546,809.38					
6113 Public Utility Realty Taxes	64,856.58					
6114 Payments in Lieu of Current Taxes - State / Local	254,088.21					
6143 Current Act 511 Local Services Taxes	273,949.15					
6151 Current Act 511 Earned Income Taxes	7,886,736.53					
6153 Current Act 511 Real Estate Transfer Taxes	1,249,055.66					
6411 Delinquent Real Estate Taxes	328,173.10					
6500 Earnings on Investments	675,547.63					
6700 Revenues from LEA Activities	129,703.55					
6832 Federal IDEA Revenue Received as Pass Through	863,763.00					
6839 Federal Revenue Received from Other Sources	64,546.41					
6910 Rentals	651,597.17					
6920 Contributions and Donations from Private Sources	181,336.02					
6942 Summer School Tuition	86,725.00					
6944 Receipts from Other LEAs in Pennsylvania - Education	80,521.23					
6961 Transportation Services Provided Other Pennsylvania LEAs	28,755.02					
6991 Refunds of a Prior Year Expenditure	204,298.85					
6999 Other Revenues Not Specified Above	151,952.96					
<b>6000 Total Revenue from Local Sources</b>	<b>\$78,558,805.08</b>					
<b>7000 Revenue from State Sources</b>						
7111 Basic Education Funding-Formula	6,096,749.20					
7112 Basic Education Funding-Social Security	1,393,987.38					
7160 Tuition for Orphans Subsidy	147,911.15					
7250 Migratory Children	680.00					
7271 Special Education funds for School-Aged Pupils	2,414,599.39					
7311 Pupil Transportation Subsidy	1,102,062.76					
7312 Nonpublic and Charter School Pupil Transportation Subsidy	197,505.00					
7320 Rental and Sinking Fund Payments / Building Reimbursement Subsidy	928,111.27					
7330 Health Services (Medical, Dental, Nurse, Act 25)	115,502.98					
7340 State Property Tax Reduction Allocation	1,115,571.56					
7361 School Safety and Security Grants	144,235.39					
7505 Ready to Learn Block Grant	474,037.00					
7820 State Share of Retirement Contributions	6,906,255.44					
<b>7000 Total Revenue from State Sources</b>	<b>\$21,037,208.52</b>					

LEA : 113364503 Manheim Township SD

Printed 10/30/2020 2:42:51 PM

	<u>Capital Reserve</u> <u>(1431) (32)</u>	<u>Other Capital</u> <u>Projects Fund (39)</u>	<u>Debt Service (40)</u>	<u>Permanent (90)</u>	<u>Total</u>
<b>6000 Revenue from Local Sources</b>					
6111 Current Real Estate Taxes					64,836,389.63
6112 Interim Real Estate Taxes					546,809.38
6113 Public Utility Realty Taxes					64,856.58
6114 Payments in Lieu of Current Taxes - State / Local					254,088.21
6143 Current Act 511 Local Services Taxes					273,949.15
6151 Current Act 511 Earned Income Taxes					7,886,736.53
6153 Current Act 511 Real Estate Transfer Taxes					1,249,055.66
6411 Delinquent Real Estate Taxes					328,173.10
6500 Earnings on Investments	123,336.79	582,133.27	0.05		1,381,017.74
6700 Revenues from LEA Activities					129,703.55
6832 Federal IDEA Revenue Received as Pass Through					863,763.00
6839 Federal Revenue Received from Other Sources					64,546.41
6910 Rentals					651,597.17
6920 Contributions and Donations from Private Sources					181,336.02
6942 Summer School Tuition					86,725.00
6944 Receipts from Other LEAs in Pennsylvania - Education					80,521.23
6961 Transportation Services Provided Other Pennsylvania LEAs					28,755.02
6991 Refunds of a Prior Year Expenditure					204,298.85
6999 Other Revenues Not Specified Above					151,952.96
<b>6000 Total Revenue from Local Sources</b>	<b>\$123,336.79</b>	<b>\$582,133.27</b>	<b>\$0.05</b>		<b>\$79,264,275.19</b>
<b>7000 Revenue from State Sources</b>					
7111 Basic Education Funding-Formula					6,096,749.20
7112 Basic Education Funding-Social Security					1,393,987.38
7160 Tuition for Orphans Subsidy					147,911.15
7250 Migratory Children					680.00
7271 Special Education funds for School-Aged Pupils					2,414,599.39
7311 Pupil Transportation Subsidy					1,102,062.76
7312 Nonpublic and Charter School Pupil Transportation Subsidy					197,505.00
7320 Rental and Sinking Fund Payments / Building Reimbursement Subsidy					928,111.27
7330 Health Services (Medical, Dental, Nurse, Act 25)					115,502.98
7340 State Property Tax Reduction Allocation					1,115,571.56
7361 School Safety and Security Grants					144,235.39
7505 Ready to Learn Block Grant					474,037.00
7820 State Share of Retirement Contributions					6,906,255.44
<b>7000 Total Revenue from State Sources</b>					<b>\$21,037,208.52</b>

	<u>General Fund (10)</u>	<u>Student Sponsored Activity Fund (21)</u>	<u>Public Purpose Trust (27)</u>	<u>Other Compt Approved (28)</u>	<u>Athletic / Activity (29)</u>	<u>Capital Reserve (690.1850) (31)</u>
<b>8000 Revenue from Federal Sources</b>						
8514 NCLB, Title I - Improving the Academic Achievement of the Disadvantaged	685,923.29					
8515 NCLB, Title II - Preparing, Training and Recruiting High Quality Teachers and Principals	122,269.19					
8516 NCLB, Title III - Language Instruction for Limited English Proficient and Immigrant Students	29,228.00					
8517 NCLB, Title IV - 21st Century Schools	58,768.32					
8749 Other CARES Act Funding	60,304.30					
<b>8000 Total Revenue from Federal Sources</b>	<b>\$956,493.10</b>					
<b>9000 Other Financing Sources</b>						
9110 Face Value of Bonds Issued						
9120 Proceeds from Refunding of Bonds						
9130 Bond Premiums						
9310 General Fund Transfers						
9400 Sale of or Compensation for Loss of Fixed Assets	28,025.00					
9990 Insurance Recoveries	67,698.74					
<b>9000 Total Other Financing Sources</b>	<b>\$95,723.74</b>					
<b>Total From All Sources</b>	<b>\$100,648,230.44</b>					

	<u>Capital Reserve</u> <u>(1431) (32)</u>	<u>Other Capital</u> <u>Projects Fund (39)</u>	<u>Debt Service (40)</u>	<u>Permanent (90)</u>	<u>Total</u>
<b>8000 Revenue from Federal Sources</b>					
8514 NCLB, Title I - Improving the Academic Achievement of the Disadvantaged					685,923.29
8515 NCLB, Title II - Preparing, Training and Recruiting High Quality Teachers and Principals					122,269.19
8516 NCLB, Title III - Language Instruction for Limited English Proficient and Immigrant Students					29,228.00
8517 NCLB, Title IV - 21st Century Schools					58,768.32
8749 Other CARES Act Funding					60,304.30
<b>8000 Total Revenue from Federal Sources</b>					<b>\$956,493.10</b>
<b>9000 Other Financing Sources</b>					
9110 Face Value of Bonds Issued		6,227,121.19			6,227,121.19
9120 Proceeds from Refunding of Bonds			20,617,878.81		20,617,878.81
9130 Bond Premiums		1,362,241.20	3,513,674.15		4,875,915.35
9310 General Fund Transfers	286,987.00				286,987.00
9400 Sale of or Compensation for Loss of Fixed Assets					28,025.00
9990 Insurance Recoveries					67,698.74
<b>9000 Total Other Financing Sources</b>	<b>\$286,987.00</b>	<b>\$7,589,362.39</b>	<b>\$24,131,552.96</b>		<b>\$32,103,626.09</b>
<b>Total From All Sources</b>	<b>\$410,323.79</b>	<b>\$8,171,495.66</b>	<b>\$24,131,553.01</b>		<b>\$133,361,602.90</b>

	<u>General Fund (10)</u>	<u>Student Sponsored Activity Fund (21)</u>	<u>Public Purpose Trust (27)</u>	<u>Other Compt Approved (28)</u>	<u>Athletic / Activity (29)</u>	<u>Capital Reserve (690. 1850) (31)</u>
Revenue from Local Sources	78,558,805.08					
Revenue from State Sources	21,037,208.52					
Revenue from Federal Sources	956,493.10					
Other Financing Sources	95,723.74					
<b>Total From All Sources</b>	<b>\$100,648,230.44</b>					



	<u>Capital Reserve (1431)</u> <u>(32)</u>	<u>Other Capital Projects</u> <u>Fund (39)</u>	<u>Debt Service (40)</u>	<u>Permanent (90)</u>	<u>Total</u>
Revenue from Local Sources	123,336.79	582,133.27	0.05		79,264,275.19
Revenue from State Sources					21,037,208.52
Revenue from Federal Sources					956,493.10
Other Financing Sources	286,987.00	7,589,362.39	24,131,552.96		32,103,626.09
<b>Total From All Sources</b>	<b>\$410,323.79</b>	<b>\$8,171,495.66</b>	<b>\$24,131,553.01</b>		<b>\$133,361,602.90</b>

General Fund (10)

	<u>Total</u>
<b>1000 Instruction</b>	
<b>100 Personnel Services – Salaries</b>	
100 Personnel Services – Salaries	28,517,258.89
<b>Total Personnel Services – Salaries</b>	<b>\$28,517,258.89</b>
<b>200 Personnel Services – Employee Benefits</b>	
210 Group Insurance – Contracted Provider	102,731.42
220 Social Security Contributions	2,149,641.80
230 PSERS Retirement Contributions	9,776,266.79
250 Unemployment Compensation	25,706.34
260 Workers’ Compensation	168,506.03
270 Group Insurance – Self-Insurance	4,989,394.70
291 Other Retirement Plans	25,000.00
292 Health Savings Accounts	554,000.00
<b>Total Personnel Services – Employee Benefits</b>	<b>\$17,791,247.08</b>
<b>300 Purchased Professional and Technical Services</b>	
322 Professional Educational Services – Ius	1,915,272.30
329 Professional Educational Services – Other	1,033,062.95
330 Other Professional Services	224.50
390 Other Purchased Professional and Technical Services	4,710.51
<b>Total Purchased Professional and Technical Services</b>	<b>\$2,953,270.26</b>
<b>400 Purchased Property Services</b>	
410 Cleaning Services	2,050.46
430 Repairs and Maintenance Services	75,691.13
<b>Total Purchased Property Services</b>	<b>\$77,741.59</b>
<b>500 Other Purchased Services</b>	
510 Student Transportation Services	2,482.36
530 Communications	27,059.38
561 Tuition To Other School Districts Within the State	267,701.44
562 Tuition To Pennsylvania Charter Schools	1,225,831.51
564 Tuition To Career and Technology Centers	869,329.25
566 Tuition To Institutions of Higher Education and Technical Institutes	100,000.00
567 Tuition To Approved Private Schools (APS) and PA Chartered Schools for the Deaf and Blind	392,951.77
568 Tuition To Private Residential Rehabilitative Institutions (PRRI) [In-State] and Detention Centers	824.80
569 Tuition – Other	288,629.80
580 Travel	2,861.58
594 IU Payment By Withholding for Institutionalized Children’s Programs – Special Classes	1,261.29
<b>Total Other Purchased Services</b>	<b>\$3,178,933.18</b>
<b>600 Supplies</b>	
610 General Supplies	637,986.70
620 Energy	337.23
630 Food	1,352.19
640 Books and Periodicals	265,882.29
650 Supplies & Fees – Technology Related	965,668.93
<b>Total Supplies</b>	<b>\$1,871,227.34</b>

**General Fund (10)**

<b>1000 Instruction</b>	<b><u>Total</u></b>
<b>700 <u>Property</u></b>	
752 Capital Equipment – Original and Additional	55,428.07
<b>Total Property</b>	<b>\$55,428.07</b>
<b>800 <u>Other Objects</u></b>	
810 Dues and Fees	19,221.93
890 Miscellaneous Expenditures	3,116.25
<b>Total Other Objects</b>	<b>\$22,338.18</b>
<b>Total 1000 Instruction</b>	<b>\$54,467,444.59</b>

**General Fund (10)**

**1100 Regular Programs – Elementary / Secondary**

	<u>Elementary</u>	<u>Secondary</u>	<u>Federal</u>	<u>Total</u>
<b>100 Personnel Services – Salaries</b>				
100 Personnel Services – Salaries	12,426,522.10	11,092,619.49	441,527.60	23,960,669.19
<b>Total Personnel Services – Salaries</b>	<b>\$12,426,522.10</b>	<b>\$11,092,619.49</b>	<b>\$441,527.60</b>	<b>\$23,960,669.19</b>
<b>200 Personnel Services – Employee Benefits</b>				
210 Group Insurance – Contracted Provider	45,574.85	42,157.05	650.54	88,382.44
220 Social Security Contributions	938,484.23	834,288.09	33,318.83	1,806,091.15
230 PSERS Retirement Contributions	4,276,341.67	3,856,679.20	85,482.14	8,218,503.01
250 Unemployment Compensation	11,176.77	4,471.60		15,648.37
260 Workers' Compensation	72,287.28	65,715.70	1,916.71	139,919.69
270 Group Insurance – Self-Insurance	2,235,351.91	1,985,127.03	48,713.43	4,269,192.37
291 Other Retirement Plans	15,000.00	10,000.00		25,000.00
292 Health Savings Accounts	235,300.00	230,466.60	7,900.00	473,666.60
<b>Total Personnel Services – Employee Benefits</b>	<b>\$7,829,516.71</b>	<b>\$7,028,905.27</b>	<b>\$177,981.65</b>	<b>\$15,036,403.63</b>
<b>300 Purchased Professional and Technical Services</b>				
322 Professional Educational Services – Ius	142.08			142.08
329 Professional Educational Services – Other	270,363.79	263,269.98		533,633.77
330 Other Professional Services		224.50		224.50
390 Other Purchased Professional and Technical Services	390.00			390.00
<b>Total Purchased Professional and Technical Services</b>	<b>\$270,895.87</b>	<b>\$263,494.48</b>		<b>\$534,390.35</b>
<b>400 Purchased Property Services</b>				
410 Cleaning Services	2,050.46			2,050.46
430 Repairs and Maintenance Services	36,306.59	32,143.14		68,449.73
<b>Total Purchased Property Services</b>	<b>\$38,357.05</b>	<b>\$32,143.14</b>		<b>\$70,500.19</b>
<b>500 Other Purchased Services</b>				
530 Communications	11,597.17	14,727.79		26,324.96
561 Tuition To Other School Districts Within the State		71,270.75		71,270.75
562 Tuition To Pennsylvania Charter Schools	298,003.94	622,733.66		920,737.60
566 Tuition To Institutions of Higher Education and Technical Institutes		100,000.00		100,000.00
568 Tuition To Private Residential Rehabilitative Institutions (PRRI) [In-State] and Detention Centers		824.80		824.80
580 Travel	501.35	2,060.66		2,562.01
<b>Total Other Purchased Services</b>	<b>\$310,102.46</b>	<b>\$811,617.66</b>		<b>\$1,121,720.12</b>
<b>600 Supplies</b>				
610 General Supplies	310,644.35	263,206.32	17,322.22	591,172.89
620 Energy		337.23		337.23
630 Food	1,301.90	50.29		1,352.19
640 Books and Periodicals	135,003.56	117,750.01	427.80	253,181.37
650 Supplies & Fees – Technology Related	228,171.65	586,498.76	90,316.88	904,987.29
<b>Total Supplies</b>	<b>\$675,121.46</b>	<b>\$967,842.61</b>	<b>\$108,066.90</b>	<b>\$1,751,030.97</b>
<b>700 Property</b>				
752 Capital Equipment – Original and Additional		55,428.07		55,428.07
<b>Total Property</b>		<b>\$55,428.07</b>		<b>\$55,428.07</b>
<b>800 Other Objects</b>				

LEA : 113364503 Manheim Township SD

Printed 10/30/2020 2:43:07 PM

General Fund (10)

1100 Regular Programs – Elementary / Secondary

800 Other Objects

810 Dues and Fees

890 Miscellaneous Expenditures

Total Other Objects

Total 1100 Regular Programs – Elementary / Secondary

Elementary

Secondary

Federal

Total

18,879.00

18,879.00

2,811.25

50.00

2,861.25

\$2,811.25

\$18,929.00

\$21,740.25

\$21,553,326.90

\$20,270,979.72

\$727,576.15

\$42,551,882.77

**General Fund (10)**

**1110 Regular Programs**

	<u>Elementary</u>	<u>Secondary</u>	<u>Federal</u>	<u>Total</u>
<b>100 Personnel Services – Salaries</b>				
100 Personnel Services – Salaries	12,426,522.10	11,092,619.49		23,519,141.59
<b>Total Personnel Services – Salaries</b>	<b>\$12,426,522.10</b>	<b>\$11,092,619.49</b>		<b>\$23,519,141.59</b>
<b>200 Personnel Services – Employee Benefits</b>				
210 Group Insurance – Contracted Provider	45,574.85	42,157.05		87,731.90
220 Social Security Contributions	938,484.23	834,288.09		1,772,772.32
230 PSERS Retirement Contributions	4,276,341.67	3,856,679.20		8,133,020.87
250 Unemployment Compensation	11,176.77	4,471.60		15,648.37
260 Workers' Compensation	72,287.28	65,715.70		138,002.98
270 Group Insurance – Self-Insurance	2,235,351.91	1,985,127.03		4,220,478.94
291 Other Retirement Plans	15,000.00	10,000.00		25,000.00
292 Health Savings Accounts	235,300.00	230,466.60		465,766.60
<b>Total Personnel Services – Employee Benefits</b>	<b>\$7,829,516.71</b>	<b>\$7,028,905.27</b>		<b>\$14,858,421.98</b>
<b>300 Purchased Professional and Technical Services</b>				
322 Professional Educational Services – Ius	142.08			142.08
329 Professional Educational Services – Other	270,363.79	263,269.98		533,633.77
330 Other Professional Services		224.50		224.50
390 Other Purchased Professional and Technical Services	390.00			390.00
<b>Total Purchased Professional and Technical Services</b>	<b>\$270,895.87</b>	<b>\$263,494.48</b>		<b>\$534,390.35</b>
<b>400 Purchased Property Services</b>				
410 Cleaning Services	2,050.46			2,050.46
430 Repairs and Maintenance Services	36,306.59	32,143.14		68,449.73
<b>Total Purchased Property Services</b>	<b>\$38,357.05</b>	<b>\$32,143.14</b>		<b>\$70,500.19</b>
<b>500 Other Purchased Services</b>				
530 Communications	11,597.17	14,727.79		26,324.96
561 Tuition To Other School Districts Within the State		71,270.75		71,270.75
562 Tuition To Pennsylvania Charter Schools	298,003.94	622,733.66		920,737.60
566 Tuition To Institutions of Higher Education and Technical Institutes		100,000.00		100,000.00
568 Tuition To Private Residential Rehabilitative Institutions (PRRI) [In-State] and Detention Centers		824.80		824.80
580 Travel	501.35	2,060.66		2,562.01
<b>Total Other Purchased Services</b>	<b>\$310,102.46</b>	<b>\$811,617.66</b>		<b>\$1,121,720.12</b>
<b>600 Supplies</b>				
610 General Supplies	310,644.35	263,206.32		573,850.67
620 Energy		337.23		337.23
630 Food	1,301.90	50.29		1,352.19
640 Books and Periodicals	135,003.56	117,750.01		252,753.57
650 Supplies & Fees – Technology Related	228,171.65	586,498.76		814,670.41
<b>Total Supplies</b>	<b>\$675,121.46</b>	<b>\$967,842.61</b>		<b>\$1,642,964.07</b>
<b>700 Property</b>				
752 Capital Equipment – Original and Additional		55,428.07		55,428.07
<b>Total Property</b>		<b>\$55,428.07</b>		<b>\$55,428.07</b>
<b>800 Other Objects</b>				

LEA : 113364503 Manheim Township SD

Printed 10/30/2020 2:43:07 PM

General Fund (10)

1110 Regular Programs

800 Other Objects

810 Dues and Fees

890 Miscellaneous Expenditures

Total Other Objects

Total 1110 Regular Programs

Elementary

Secondary

Federal

Total

18,879.00

2,811.25

50.00

\$2,811.25

\$18,929.00

18,879.00

2,861.25

\$21,740.25

\$21,553,326.90

\$20,270,979.72

\$41,824,306.62

**General Fund (10)**

**1190 Federally-Funded Regular Programs**

**100 Personnel Services – Salaries**

	<u>Elementary</u>	<u>Secondary</u>	<u>Federal</u>	<u>Total</u>
100 Personnel Services – Salaries			441,527.60	441,527.60
<b>Total Personnel Services – Salaries</b>			<b>\$441,527.60</b>	<b>\$441,527.60</b>

**200 Personnel Services – Employee Benefits**

210 Group Insurance – Contracted Provider			650.54	650.54
220 Social Security Contributions			33,318.83	33,318.83
230 PSERS Retirement Contributions			85,482.14	85,482.14
260 Workers' Compensation			1,916.71	1,916.71
270 Group Insurance – Self-Insurance			48,713.43	48,713.43
292 Health Savings Accounts			7,900.00	7,900.00
<b>Total Personnel Services – Employee Benefits</b>			<b>\$177,981.65</b>	<b>\$177,981.65</b>

**600 Supplies**

610 General Supplies			17,322.22	17,322.22
640 Books and Periodicals			427.80	427.80
650 Supplies & Fees – Technology Related			90,316.88	90,316.88

<b>Total Supplies</b>			<b>\$108,066.90</b>	<b>\$108,066.90</b>
<b>Total 1190 Federally-Funded Regular Programs</b>			<b>\$727,576.15</b>	<b>\$727,576.15</b>



**General Fund (10)**

**1200 Special Programs – Elementary / Secondary**

	<u>Elementary</u>	<u>Secondary</u>	<u>Federal</u>	<u>Total</u>
<b>100 Personnel Services – Salaries</b>				
100 Personnel Services – Salaries	2,529,183.21	1,907,579.88		4,436,763.09
<b>Total Personnel Services – Salaries</b>	<b>\$2,529,183.21</b>	<b>\$1,907,579.88</b>		<b>\$4,436,763.09</b>
<b>200 Personnel Services – Employee Benefits</b>				
210 Group Insurance – Contracted Provider	7,357.48	6,626.23		13,983.71
220 Social Security Contributions	191,237.81	143,229.83		334,467.64
230 PSERS Retirement Contributions	863,723.76	652,951.50		1,516,675.26
250 Unemployment Compensation	3,877.13	273.24		4,150.37
260 Workers' Compensation	15,278.91	13,252.67		28,531.58
270 Group Insurance – Self-Insurance	371,391.26	338,893.00		710,284.26
292 Health Savings Accounts	43,000.00	35,333.40		78,333.40
<b>Total Personnel Services – Employee Benefits</b>	<b>\$1,495,866.35</b>	<b>\$1,190,559.87</b>		<b>\$2,686,426.22</b>
<b>300 Purchased Professional and Technical Services</b>				
322 Professional Educational Services – Ius	446,257.41	750,179.39	606,288.00	1,802,724.80
329 Professional Educational Services – Other	166,404.23	62,740.53	257,475.00	486,619.76
390 Other Purchased Professional and Technical Services	3,714.20	606.31		4,320.51
<b>Total Purchased Professional and Technical Services</b>	<b>\$616,375.84</b>	<b>\$813,526.23</b>	<b>\$863,763.00</b>	<b>\$2,293,665.07</b>
<b>400 Purchased Property Services</b>				
430 Repairs and Maintenance Services	4,370.88	2,870.52		7,241.40
<b>Total Purchased Property Services</b>	<b>\$4,370.88</b>	<b>\$2,870.52</b>		<b>\$7,241.40</b>
<b>500 Other Purchased Services</b>				
510 Student Transportation Services		2,482.36		2,482.36
530 Communications		734.42		734.42
561 Tuition To Other School Districts Within the State	9,225.50	187,205.19		196,430.69
562 Tuition To Pennsylvania Charter Schools	51,735.41	253,358.50		305,093.91
567 Tuition To Approved Private Schools (APS) and PA Chartered Schools for the Deaf and Blind		392,951.77		392,951.77
569 Tuition – Other		205,352.20		205,352.20
580 Travel	299.57			299.57
594 IU Payment By Withholding for Institutionalized Children's Programs – Special Classes		1,261.29		1,261.29
<b>Total Other Purchased Services</b>	<b>\$61,260.48</b>	<b>\$1,043,345.73</b>		<b>\$1,104,606.21</b>
<b>600 Supplies</b>				
610 General Supplies	30,290.95	15,518.20		45,809.15
640 Books and Periodicals	7,883.29	4,817.63		12,700.92
650 Supplies & Fees – Technology Related	15,379.88	10,779.76		26,159.64
<b>Total Supplies</b>	<b>\$53,554.12</b>	<b>\$31,115.59</b>		<b>\$84,669.71</b>
<b>800 Other Objects</b>				
810 Dues and Fees	181.75	161.18		342.93
890 Miscellaneous Expenditures		255.00		255.00
<b>Total Other Objects</b>	<b>\$181.75</b>	<b>\$416.18</b>		<b>\$597.93</b>
<b>Total 1200 Special Programs – Elementary / Secondary</b>	<b>\$4,760,792.63</b>	<b>\$4,989,414.00</b>	<b>\$863,763.00</b>	<b>\$10,613,969.63</b>

**General Fund (10)**

**1210 Life Skills Support**

	<u>Elementary</u>	<u>Secondary</u>	<u>Federal</u>	<u>Total</u>
<b>100 Personnel Services – Salaries</b>				
100 Personnel Services – Salaries	14,150.38	44,865.59		59,015.97
<b>Total Personnel Services – Salaries</b>	<b>\$14,150.38</b>	<b>\$44,865.59</b>		<b>\$59,015.97</b>
<b>200 Personnel Services – Employee Benefits</b>				
220 Social Security Contributions	1,082.51	3,432.23		4,514.74
230 PSERS Retirement Contributions	4,852.19	15,384.39		20,236.58
260 Workers’ Compensation	164.29	54.76		219.05
<b>Total Personnel Services – Employee Benefits</b>	<b>\$6,098.99</b>	<b>\$18,871.38</b>		<b>\$24,970.37</b>
<b>600 Supplies</b>				
610 General Supplies	1,065.17	(276.91)		788.26
640 Books and Periodicals	2,452.41	1,099.79		3,552.20
650 Supplies & Fees – Technology Related		1,769.96		1,769.96
<b>Total Supplies</b>	<b>\$3,517.58</b>	<b>\$2,592.84</b>		<b>\$6,110.42</b>
<b>Total 1210 Life Skills Support</b>	<b>\$23,766.95</b>	<b>\$66,329.81</b>		<b>\$90,096.76</b>

**General Fund (10)**

**1220 Sensory Support**

	<u>Elementary</u>	<u>Secondary</u>	<u>Federal</u>	<u>Total</u>
<b>100 Personnel Services – Salaries</b>				
100 Personnel Services – Salaries	332,131.85	60,661.00		392,792.85
<b>Total Personnel Services – Salaries</b>	<b>\$332,131.85</b>	<b>\$60,661.00</b>		<b>\$392,792.85</b>
<b>200 Personnel Services – Employee Benefits</b>				
210 Group Insurance – Contracted Provider	1,323.78	310.04		1,633.82
220 Social Security Contributions	24,759.99	4,197.51		28,957.50
230 PSERS Retirement Contributions	113,394.41	20,757.76		134,152.17
260 Workers' Compensation	1,314.31	328.58		1,642.89
270 Group Insurance – Self-Insurance	71,993.80	22,067.18		94,060.98
292 Health Savings Accounts	8,000.00	2,000.00		10,000.00
<b>Total Personnel Services – Employee Benefits</b>	<b>\$220,786.29</b>	<b>\$49,661.07</b>		<b>\$270,447.36</b>
<b>300 Purchased Professional and Technical Services</b>				
322 Professional Educational Services – Ius	225,104.66	199,786.48		424,891.14
390 Other Purchased Professional and Technical Services	3,714.20	606.31		4,320.51
<b>Total Purchased Professional and Technical Services</b>	<b>\$228,818.86</b>	<b>\$200,392.79</b>		<b>\$429,211.65</b>
<b>500 Other Purchased Services</b>				
580 Travel	151.23			151.23
<b>Total Other Purchased Services</b>	<b>\$151.23</b>			<b>\$151.23</b>
<b>600 Supplies</b>				
610 General Supplies	492.01	569.27		1,061.28
640 Books and Periodicals	1,033.94	1,142.40		2,176.34
<b>Total Supplies</b>	<b>\$1,525.95</b>	<b>\$1,711.67</b>		<b>\$3,237.62</b>
<b>Total 1220 Sensory Support</b>	<b>\$783,414.18</b>	<b>\$312,426.53</b>		<b>\$1,095,840.71</b>

**General Fund (10)**

**1230 Emotional Support**

	<u>Elementary</u>	<u>Secondary</u>	<u>Federal</u>	<u>Total</u>
<b>100 Personnel Services – Salaries</b>				
100 Personnel Services – Salaries	487,851.03	241,420.42		729,271.45
<b>Total Personnel Services – Salaries</b>	<b>\$487,851.03</b>	<b>\$241,420.42</b>		<b>\$729,271.45</b>
<b>200 Personnel Services – Employee Benefits</b>				
210 Group Insurance – Contracted Provider	1,235.26	675.26		1,910.52
220 Social Security Contributions	37,058.30	18,322.67		55,380.97
230 PSERS Retirement Contributions	165,975.03	82,697.12		248,672.15
260 Workers' Compensation	3,614.36	1,150.02		4,764.38
270 Group Insurance – Self-Insurance	71,635.33	33,925.42		105,560.75
292 Health Savings Accounts	6,000.00	3,000.00		9,000.00
<b>Total Personnel Services – Employee Benefits</b>	<b>\$285,518.28</b>	<b>\$139,770.49</b>		<b>\$425,288.77</b>
<b>300 Purchased Professional and Technical Services</b>				
322 Professional Educational Services – Ius	216,192.44	255,527.17		471,719.61
329 Professional Educational Services – Other	16,945.98	959.40		17,905.38
<b>Total Purchased Professional and Technical Services</b>	<b>\$233,138.42</b>	<b>\$256,486.57</b>		<b>\$489,624.99</b>
<b>500 Other Purchased Services</b>				
561 Tuition To Other School Districts Within the State		66,175.43		66,175.43
567 Tuition To Approved Private Schools (APS) and PA Chartered Schools for the Deaf and Blind		136,659.12		136,659.12
569 Tuition – Other		197,923.40		197,923.40
<b>Total Other Purchased Services</b>		<b>\$400,757.95</b>		<b>\$400,757.95</b>
<b>600 Supplies</b>				
610 General Supplies	1,906.66	913.84		2,820.50
640 Books and Periodicals	4,225.57	682.41		4,907.98
<b>Total Supplies</b>	<b>\$6,132.23</b>	<b>\$1,596.25</b>		<b>\$7,728.48</b>
<b>800 Other Objects</b>				
890 Miscellaneous Expenditures		255.00		255.00
<b>Total Other Objects</b>		<b>\$255.00</b>		<b>\$255.00</b>
<b>Total 1230 Emotional Support</b>	<b>\$1,012,639.96</b>	<b>\$1,040,286.68</b>		<b>\$2,052,926.64</b>

**General Fund (10)**

**1240 Academic Support**

	<u>Elementary</u>	<u>Secondary</u>	<u>Federal</u>	<u>Total</u>
<b>100 Personnel Services – Salaries</b>				
100 Personnel Services – Salaries	1,658,847.19	1,497,771.87		3,156,619.06
<b>Total Personnel Services – Salaries</b>	<b>\$1,658,847.19</b>	<b>\$1,497,771.87</b>		<b>\$3,156,619.06</b>
<b>200 Personnel Services – Employee Benefits</b>				
210 Group Insurance – Contracted Provider	4,798.44	5,333.42		10,131.86
220 Social Security Contributions	125,567.45	112,758.95		238,326.40
230 PSERS Retirement Contributions	567,088.25	512,600.07		1,079,688.32
250 Unemployment Compensation	3,877.13	273.24		4,150.37
260 Workers' Compensation	10,021.66	11,226.44		21,248.10
270 Group Insurance – Self-Insurance	227,762.13	268,420.24		496,182.37
292 Health Savings Accounts	29,000.00	28,333.40		57,333.40
<b>Total Personnel Services – Employee Benefits</b>	<b>\$968,115.06</b>	<b>\$938,945.76</b>		<b>\$1,907,060.82</b>
<b>300 Purchased Professional and Technical Services</b>				
322 Professional Educational Services – Ius		140,041.00		140,041.00
329 Professional Educational Services – Other	149,458.25	61,781.13		211,239.38
<b>Total Purchased Professional and Technical Services</b>	<b>\$149,458.25</b>	<b>\$201,822.13</b>		<b>\$351,280.38</b>
<b>400 Purchased Property Services</b>				
430 Repairs and Maintenance Services	4,370.88	2,870.52		7,241.40
<b>Total Purchased Property Services</b>	<b>\$4,370.88</b>	<b>\$2,870.52</b>		<b>\$7,241.40</b>
<b>500 Other Purchased Services</b>				
530 Communications		734.42		734.42
561 Tuition To Other School Districts Within the State	9,225.50	121,029.76		130,255.26
562 Tuition To Pennsylvania Charter Schools	51,735.41	253,358.50		305,093.91
580 Travel	148.34			148.34
<b>Total Other Purchased Services</b>	<b>\$61,109.25</b>	<b>\$375,122.68</b>		<b>\$436,231.93</b>
<b>600 Supplies</b>				
610 General Supplies	3,042.18	2,505.30		5,547.48
640 Books and Periodicals	171.37	715.29		886.66
650 Supplies & Fees – Technology Related	14,683.00	9,009.80		23,692.80
<b>Total Supplies</b>	<b>\$17,896.55</b>	<b>\$12,230.39</b>		<b>\$30,126.94</b>
<b>Total 1240 Academic Support</b>	<b>\$2,859,797.18</b>	<b>\$3,028,763.35</b>		<b>\$5,888,560.53</b>

**General Fund (10)**

	<u>Elementary</u>	<u>Secondary</u>	<u>Federal</u>	<u>Total</u>
<b>1241 Learning Support – Public</b>				
<b>100 Personnel Services – Salaries</b>				
100 Personnel Services – Salaries	1,410,594.19	1,267,670.73		2,678,264.92
<b>Total Personnel Services – Salaries</b>	<b>\$1,410,594.19</b>	<b>\$1,267,670.73</b>		<b>\$2,678,264.92</b>
<b>200 Personnel Services – Employee Benefits</b>				
210 Group Insurance – Contracted Provider	3,911.80	4,478.37		8,390.17
220 Social Security Contributions	106,812.54	95,532.52		202,345.06
230 PSERS Retirement Contributions	482,305.24	433,827.03		916,132.27
250 Unemployment Compensation	3,877.13	273.24		4,150.37
260 Workers' Compensation	8,159.71	9,474.02		17,633.73
270 Group Insurance – Self-Insurance	178,232.71	225,463.76		403,696.47
292 Health Savings Accounts	25,000.00	25,000.00		50,000.00
<b>Total Personnel Services – Employee Benefits</b>	<b>\$808,299.13</b>	<b>\$794,048.94</b>		<b>\$1,602,348.07</b>
<b>300 Purchased Professional and Technical Services</b>				
322 Professional Educational Services – Ius		140,041.00		140,041.00
329 Professional Educational Services – Other	148,898.60	59,062.83		207,961.43
<b>Total Purchased Professional and Technical Services</b>	<b>\$148,898.60</b>	<b>\$199,103.83</b>		<b>\$348,002.43</b>
<b>400 Purchased Property Services</b>				
430 Repairs and Maintenance Services	4,370.88	2,870.52		7,241.40
<b>Total Purchased Property Services</b>	<b>\$4,370.88</b>	<b>\$2,870.52</b>		<b>\$7,241.40</b>
<b>500 Other Purchased Services</b>				
530 Communications		734.42		734.42
561 Tuition To Other School Districts Within the State	9,225.50	121,029.76		130,255.26
562 Tuition To Pennsylvania Charter Schools	51,735.41	253,358.50		305,093.91
<b>Total Other Purchased Services</b>	<b>\$60,960.91</b>	<b>\$375,122.68</b>		<b>\$436,083.59</b>
<b>600 Supplies</b>				
610 General Supplies	1,704.54	405.30		2,109.84
640 Books and Periodicals	171.37	715.29		886.66
650 Supplies & Fees – Technology Related	14,683.00	9,009.80		23,692.80
<b>Total Supplies</b>	<b>\$16,558.91</b>	<b>\$10,130.39</b>		<b>\$26,689.30</b>
<b>Total 1241 Learning Support – Public</b>	<b>\$2,449,682.62</b>	<b>\$2,648,947.09</b>		<b>\$5,098,629.71</b>

**General Fund (10)**

**1243 Gifted Support**

	<u>Elementary</u>	<u>Secondary</u>	<u>Federal</u>	<u>Total</u>
<b>100 Personnel Services – Salaries</b>				
100 Personnel Services – Salaries	248,253.00	230,101.14		478,354.14
<b>Total Personnel Services – Salaries</b>	<b>\$248,253.00</b>	<b>\$230,101.14</b>		<b>\$478,354.14</b>
<b>200 Personnel Services – Employee Benefits</b>				
210 Group Insurance – Contracted Provider	886.64	855.05		1,741.69
220 Social Security Contributions	18,754.91	17,226.43		35,981.34
230 PSERS Retirement Contributions	84,783.01	78,773.04		163,556.05
260 Workers' Compensation	1,861.95	1,752.42		3,614.37
270 Group Insurance – Self-Insurance	49,529.42	42,956.48		92,485.90
292 Health Savings Accounts	4,000.00	3,333.40		7,333.40
<b>Total Personnel Services – Employee Benefits</b>	<b>\$159,815.93</b>	<b>\$144,896.82</b>		<b>\$304,712.75</b>
<b>300 Purchased Professional and Technical Services</b>				
329 Professional Educational Services – Other	559.65	2,718.30		3,277.95
<b>Total Purchased Professional and Technical Services</b>	<b>\$559.65</b>	<b>\$2,718.30</b>		<b>\$3,277.95</b>
<b>500 Other Purchased Services</b>				
580 Travel	148.34			148.34
<b>Total Other Purchased Services</b>	<b>\$148.34</b>			<b>\$148.34</b>
<b>600 Supplies</b>				
610 General Supplies	1,337.64	2,100.00		3,437.64
<b>Total Supplies</b>	<b>\$1,337.64</b>	<b>\$2,100.00</b>		<b>\$3,437.64</b>
<b>Total 1243 Gifted Support</b>	<b>\$410,114.56</b>	<b>\$379,816.26</b>		<b>\$789,930.82</b>

**General Fund (10)**

**1270 Multi-Handicapped Support**

	<u>Elementary</u>	<u>Secondary</u>	<u>Federal</u>	<u>Total</u>
<b>100 Personnel Services – Salaries</b>				
100 Personnel Services – Salaries	36,202.76	62,861.00		99,063.76
<b>Total Personnel Services – Salaries</b>	<b>\$36,202.76</b>	<b>\$62,861.00</b>		<b>\$99,063.76</b>
<b>200 Personnel Services – Employee Benefits</b>				
210 Group Insurance – Contracted Provider		307.51		307.51
220 Social Security Contributions	2,769.56	4,518.47		7,288.03
230 PSERS Retirement Contributions	12,413.88	21,512.16		33,926.04
260 Workers' Compensation	164.29	492.87		657.16
270 Group Insurance – Self-Insurance		14,480.16		14,480.16
292 Health Savings Accounts		2,000.00		2,000.00
<b>Total Personnel Services – Employee Benefits</b>	<b>\$15,347.73</b>	<b>\$43,311.17</b>		<b>\$58,658.90</b>
<b>300 Purchased Professional and Technical Services</b>				
322 Professional Educational Services – Ius	4,960.31			4,960.31
<b>Total Purchased Professional and Technical Services</b>	<b>\$4,960.31</b>			<b>\$4,960.31</b>
<b>500 Other Purchased Services</b>				
510 Student Transportation Services		2,482.36		2,482.36
<b>Total Other Purchased Services</b>		<b>\$2,482.36</b>		<b>\$2,482.36</b>
<b>600 Supplies</b>				
610 General Supplies	23,784.93	11,806.70		35,591.63
640 Books and Periodicals		1,177.74		1,177.74
650 Supplies & Fees – Technology Related	696.88			696.88
<b>Total Supplies</b>	<b>\$24,481.81</b>	<b>\$12,984.44</b>		<b>\$37,466.25</b>
<b>Total 1270 Multi-Handicapped Support</b>	<b>\$80,992.61</b>	<b>\$121,638.97</b>		<b>\$202,631.58</b>



**General Fund (10)**

**1290 Special Programs - Other Support**

**300 Purchased Professional and Technical Services**

	<u>Elementary</u>	<u>Secondary</u>	<u>Federal</u>	<u>Total</u>
322 Professional Educational Services – Ius		154,824.74	606,288.00	761,112.74
329 Professional Educational Services – Other			257,475.00	257,475.00
<b>Total Purchased Professional and Technical Services</b>		<b>\$154,824.74</b>	<b>\$863,763.00</b>	<b>\$1,018,587.74</b>

**500 Other Purchased Services**

567 Tuition To Approved Private Schools (APS) and PA Chartered Schools for the Deaf and Blind		256,292.65		256,292.65
569 Tuition – Other		7,428.80		7,428.80
594 IU Payment By Withholding for Institutionalized Children’s Programs – Special Classes		1,261.29		1,261.29
<b>Total Other Purchased Services</b>		<b>\$264,982.74</b>		<b>\$264,982.74</b>

**800 Other Objects**

810 Dues and Fees	181.75	161.18		342.93
<b>Total Other Objects</b>	<b>\$181.75</b>	<b>\$161.18</b>		<b>\$342.93</b>
<b>Total 1290 Special Programs - Other Support</b>	<b>\$181.75</b>	<b>\$419,968.66</b>	<b>\$863,763.00</b>	<b>\$1,283,913.41</b>

General Fund (10)

1300 Vocational Education

300 Purchased Professional and Technical Services

322 Professional Educational Services – lus

Elementary

Secondary

Federal

Total

85,493.52

85,493.52

**Total Purchased Professional and Technical Services**

**\$85,493.52**

**\$85,493.52**

500 Other Purchased Services

564 Tuition To Career and Technology Centers

869,329.25

869,329.25

**Total Other Purchased Services**

**\$869,329.25**

**\$869,329.25**

**Total 1300 Vocational Education**

**\$954,822.77**

**\$954,822.77**

**General Fund (10)**

	<u>Elementary</u>	<u>Secondary</u>	<u>Federal</u>	<u>Total</u>
<b>1400 Other Instructional Programs – Elementary / Secondary</b>				
<b>100 Personnel Services – Salaries</b>				
100 Personnel Services – Salaries	10,660.63	109,165.98		119,826.61
<b>Total Personnel Services – Salaries</b>	<b>\$10,660.63</b>	<b>\$109,165.98</b>		<b>\$119,826.61</b>
<b>200 Personnel Services – Employee Benefits</b>				
210 Group Insurance – Contracted Provider	13.16	352.11		365.27
220 Social Security Contributions	804.40	8,278.61		9,083.01
230 PSERS Retirement Contributions	3,655.49	37,433.03		41,088.52
250 Unemployment Compensation		5,907.60		5,907.60
260 Workers' Compensation	54.76			54.76
270 Group Insurance – Self-Insurance		9,918.07		9,918.07
292 Health Savings Accounts		2,000.00		2,000.00
<b>Total Personnel Services – Employee Benefits</b>	<b>\$4,527.81</b>	<b>\$63,889.42</b>		<b>\$68,417.23</b>
<b>300 Purchased Professional and Technical Services</b>				
329 Professional Educational Services – Other	4,156.53	8,652.89		12,809.42
<b>Total Purchased Professional and Technical Services</b>	<b>\$4,156.53</b>	<b>\$8,652.89</b>		<b>\$12,809.42</b>
<b>500 Other Purchased Services</b>				
569 Tuition – Other		83,277.60		83,277.60
<b>Total Other Purchased Services</b>		<b>\$83,277.60</b>		<b>\$83,277.60</b>
<b>600 Supplies</b>				
610 General Supplies	1,004.66			1,004.66
650 Supplies & Fees – Technology Related		34,522.00		34,522.00
<b>Total Supplies</b>	<b>\$1,004.66</b>	<b>\$34,522.00</b>		<b>\$35,526.66</b>
<b>Total 1400 Other Instructional Programs – Elementary / Secondary</b>	<b>\$20,349.63</b>	<b>\$299,507.89</b>		<b>\$319,857.52</b>

**General Fund (10)**

**1420 Summer School**

	<u>Elementary</u>	<u>Secondary</u>	<u>Federal</u>	<u>Total</u>
<b>100 Personnel Services – Salaries</b>				
100 Personnel Services – Salaries	6,375.63	52,550.00		58,925.63
<b>Total Personnel Services – Salaries</b>	<b>\$6,375.63</b>	<b>\$52,550.00</b>		<b>\$58,925.63</b>
<b>200 Personnel Services – Employee Benefits</b>				
210 Group Insurance – Contracted Provider	13.16	142.86		156.02
220 Social Security Contributions	483.49	3,992.50		4,475.99
230 PSERS Retirement Contributions	2,186.20	18,019.41		20,205.61
260 Workers' Compensation	54.76			54.76
<b>Total Personnel Services – Employee Benefits</b>	<b>\$2,737.61</b>	<b>\$22,154.77</b>		<b>\$24,892.38</b>
<b>600 Supplies</b>				
610 General Supplies	1,004.66			1,004.66
650 Supplies & Fees – Technology Related		34,522.00		34,522.00
<b>Total Supplies</b>	<b>\$1,004.66</b>	<b>\$34,522.00</b>		<b>\$35,526.66</b>
<b>Total 1420 Summer School</b>	<b>\$10,117.90</b>	<b>\$109,226.77</b>		<b>\$119,344.67</b>

**General Fund (10)**

**1430 Homebound Instruction**

	<u>Elementary</u>	<u>Secondary</u>	<u>Federal</u>	<u>Total</u>
<b>100 Personnel Services – Salaries</b>				
100 Personnel Services – Salaries	3,335.00	587.25		3,922.25
<b>Total Personnel Services – Salaries</b>	<b>\$3,335.00</b>	<b>\$587.25</b>		<b>\$3,922.25</b>
<b>200 Personnel Services – Employee Benefits</b>				
220 Social Security Contributions	249.21	43.52		292.73
230 PSERS Retirement Contributions	1,143.55	201.36		1,344.91
<b>Total Personnel Services – Employee Benefits</b>	<b>\$1,392.76</b>	<b>\$244.88</b>		<b>\$1,637.64</b>
<b>300 Purchased Professional and Technical Services</b>				
329 Professional Educational Services – Other	4,156.53	8,652.89		12,809.42
<b>Total Purchased Professional and Technical Services</b>	<b>\$4,156.53</b>	<b>\$8,652.89</b>		<b>\$12,809.42</b>
<b>Total 1430 Homebound Instruction</b>	<b>\$8,884.29</b>	<b>\$9,485.02</b>		<b>\$18,369.31</b>

**General Fund (10)**

	<u>Elementary</u>	<u>Secondary</u>	<u>Federal</u>	<u>Total</u>
<b>1440 Alternative Regular Education Programs</b>				
<b>100 Personnel Services – Salaries</b>				
100 Personnel Services – Salaries		56,028.73		56,028.73
<b>Total Personnel Services – Salaries</b>		<b>\$56,028.73</b>		<b>\$56,028.73</b>
<b>200 Personnel Services – Employee Benefits</b>				
210 Group Insurance – Contracted Provider		209.25		209.25
220 Social Security Contributions		4,242.59		4,242.59
230 PSERS Retirement Contributions		19,212.26		19,212.26
250 Unemployment Compensation		5,907.60		5,907.60
270 Group Insurance – Self-Insurance		9,918.07		9,918.07
292 Health Savings Accounts		2,000.00		2,000.00
<b>Total Personnel Services – Employee Benefits</b>		<b>\$41,489.77</b>		<b>\$41,489.77</b>
<b>500 Other Purchased Services</b>				
569 Tuition – Other		83,277.60		83,277.60
<b>Total Other Purchased Services</b>		<b>\$83,277.60</b>		<b>\$83,277.60</b>
<b>Total 1440 Alternative Regular Education Programs</b>		<b>\$180,796.10</b>		<b>\$180,796.10</b>

General Fund (10)

1442 Alternative Education Programs

100 Personnel Services – Salaries

	<u>Elementary</u>	<u>Secondary</u>	<u>Federal</u>	<u>Total</u>
100 Personnel Services – Salaries		56,028.73		56,028.73
<b>Total Personnel Services – Salaries</b>		<b>\$56,028.73</b>		<b>\$56,028.73</b>
<b>200 Personnel Services – Employee Benefits</b>				
210 Group Insurance – Contracted Provider		209.25		209.25
220 Social Security Contributions		4,242.59		4,242.59
230 PSERS Retirement Contributions		19,212.26		19,212.26
250 Unemployment Compensation		5,907.60		5,907.60
270 Group Insurance – Self-Insurance		9,918.07		9,918.07
292 Health Savings Accounts		2,000.00		2,000.00
<b>Total Personnel Services – Employee Benefits</b>		<b>\$41,489.77</b>		<b>\$41,489.77</b>
<b>500 Other Purchased Services</b>				
569 Tuition – Other		83,277.60		83,277.60
<b>Total Other Purchased Services</b>		<b>\$83,277.60</b>		<b>\$83,277.60</b>
<b>Total 1442 Alternative Education Programs</b>		<b>\$180,796.10</b>		<b>\$180,796.10</b>

General Fund (10)

	<u>Elementary</u>	<u>Secondary</u>	<u>Federal</u>	<u>Total</u>
<b>1450 Instructional Programs Outside the Established School Day</b>				
<b>100 Personnel Services – Salaries</b>				
100 Personnel Services – Salaries	950.00			950.00
<b>Total Personnel Services – Salaries</b>	<b>\$950.00</b>			<b>\$950.00</b>
<b>200 Personnel Services – Employee Benefits</b>				
220 Social Security Contributions	71.70			71.70
230 PSERS Retirement Contributions	325.74			325.74
<b>Total Personnel Services – Employee Benefits</b>	<b>\$397.44</b>			<b>\$397.44</b>
<b>Total 1450 Instructional Programs Outside the Established School Day</b>	<b>\$1,347.44</b>			<b>\$1,347.44</b>



General Fund (10)

1500 Nonpublic School Programs

300 Purchased Professional and Technical Services

322 Professional Educational Services – lus

**Total Purchased Professional and Technical Services**

**Total 1500 Nonpublic School Programs**

Elementary

Secondary

Federal

Total

26,911.90

26,911.90

**\$26,911.90**

**\$26,911.90**

**\$26,911.90**

**\$26,911.90**

General Fund (10)

2000 Support Services

Total

100 Personnel Services – Salaries

100 Personnel Services – Salaries 11,337,343.53

Total Personnel Services – Salaries \$11,337,343.53

200 Personnel Services – Employee Benefits

210 Group Insurance – Contracted Provider 37,214.44

220 Social Security Contributions 851,126.95

230 PSERS Retirement Contributions 3,856,988.90

240 Tuition Reimbursement 480,973.57

250 Unemployment Compensation 11,784.70

260 Workers' Compensation 67,249.08

270 Group Insurance – Self-Insurance 2,330,512.97

291 Other Retirement Plans 12,709.96

292 Health Savings Accounts 216,600.00

299 All Other Employee Benefits 32,204.69

Total Personnel Services – Employee Benefits \$7,897,365.26

300 Purchased Professional and Technical Services

310 Official / Administrative Services 135,849.32

322 Professional Educational Services – Ius 15,339.45

329 Professional Educational Services – Other 6,863.74

330 Other Professional Services 388,428.01

340 Technical Services 149,864.34

350 Security / Safety Services 249,680.50

360 Employee Training and Development Services 59,857.75

390 Other Purchased Professional and Technical Services 185,572.23

Total Purchased Professional and Technical Services \$1,191,455.34

400 Purchased Property Services

410 Cleaning Services 511,466.04

420 Utility Services 96,977.17

430 Repairs and Maintenance Services 1,227,995.13

440 Rentals 45,125.75

450 Construction Services 12,147.73

460 Extermination Services 6,382.52

490 Other Purchased Property Services 100.00

Total Purchased Property Services \$1,900,194.34

500 Other Purchased Services

510 Student Transportation Services 2,093.26

513 Contracted Carriers 2,817,794.07

516 Student Transportation Services From the IU 111,291.87

520 Insurance – General 316.00

523 General Property and Liability Insurance 358,514.87

530 Communications 169,276.15

549 Other Advertising/Public Relations 19,062.49

550 Printing and Binding 8,902.75

580 Travel 30,704.76

**General Fund (10)**

**2000 Support Services**

**Total**

**500 Other Purchased Services**

595 IU Payments By Withholding

51,284.88

**Total Other Purchased Services**

**\$3,569,241.10**

**600 Supplies**

610 General Supplies

791,035.46

620 Energy

1,343,566.60

630 Food

21,474.40

640 Books and Periodicals

95,284.89

650 Supplies & Fees – Technology Related

767,035.36

**Total Supplies**

**\$3,018,396.71**

**700 Property**

752 Capital Equipment – Original and Additional

161,333.34

756 Capitalized Technology Equipment – Original

17,276.89

758 Capitalized Technology Software - Original

102,175.01

**Total Property**

**\$280,785.24**

**800 Other Objects**

810 Dues and Fees

69,002.01

820 Claims and Judgments Against the LEA

14,976.00

890 Miscellaneous Expenditures

17,508.72

**Total Other Objects**

**\$101,486.73**

**Total 2000 Support Services**

**\$29,296,268.25**

**General Fund (10)**

**2100 Support Services – Students**

**100 Personnel Services – Salaries**

	<u>Elementary</u>	<u>Secondary</u>	<u>Federal</u>	<u>Total</u>
100 Personnel Services – Salaries	940,810.93	1,030,695.63		2,271,208.92
<b>Total Personnel Services – Salaries</b>	<b>\$940,810.93</b>	<b>\$1,030,695.63</b>		<b>\$2,271,208.92</b>

**200 Personnel Services – Employee Benefits**

210 Group Insurance – Contracted Provider	3,407.44	3,852.82		8,309.60
220 Social Security Contributions	71,021.80	77,687.43		171,059.60
230 PSERS Retirement Contributions	321,824.47	352,542.31		777,079.53
260 Workers' Compensation	5,541.47	6,232.60		13,252.67
270 Group Insurance – Self-Insurance	159,940.84	171,882.21		406,431.14
291 Other Retirement Plans				9,459.96
292 Health Savings Accounts	13,200.00	18,800.00		40,000.00
299 All Other Employee Benefits	256.52	227.48		604.00
<b>Total Personnel Services – Employee Benefits</b>	<b>\$575,192.54</b>	<b>\$631,224.85</b>		<b>\$1,426,196.50</b>

**300 Purchased Professional and Technical Services**

330 Other Professional Services	23,691.00	26,283.75		50,474.75
340 Technical Services	2,265.00			62,933.79
390 Other Purchased Professional and Technical Services	7,211.19	5,868.39		13,079.58
<b>Total Purchased Professional and Technical Services</b>	<b>\$33,167.19</b>	<b>\$32,152.14</b>		<b>\$126,488.12</b>

**400 Purchased Property Services**

430 Repairs and Maintenance Services	811.54	744.53		1,556.07
<b>Total Purchased Property Services</b>	<b>\$811.54</b>	<b>\$744.53</b>		<b>\$1,556.07</b>

**500 Other Purchased Services**

510 Student Transportation Services		2,093.26		2,093.26
530 Communications	1,090.82	1,733.39		2,824.21
550 Printing and Binding	191.47	1,017.79		1,244.51
580 Travel	483.25	378.16		2,525.86
<b>Total Other Purchased Services</b>	<b>\$1,765.54</b>	<b>\$5,222.60</b>		<b>\$8,687.84</b>

**600 Supplies**

610 General Supplies	9,835.04	8,322.51		18,157.55
630 Food	200.99	816.30		1,017.29
640 Books and Periodicals	626.16	443.05		1,142.63
650 Supplies & Fees – Technology Related	53,033.90	33,423.39		93,056.59
<b>Total Supplies</b>	<b>\$63,696.09</b>	<b>\$43,005.25</b>		<b>\$113,374.06</b>

**800 Other Objects**

810 Dues and Fees	47.17	1,736.83		1,969.00
<b>Total Other Objects</b>	<b>\$47.17</b>	<b>\$1,736.83</b>		<b>\$1,969.00</b>

**Total 2100 Support Services – Students**

<b>\$1,615,491.00</b>	<b>\$1,744,781.83</b>		<b>\$3,949,480.51</b>
-----------------------	-----------------------	--	-----------------------

**General Fund (10)**

	<u>Elementary</u>	<u>Secondary</u>	<u>Federal</u>	<u>Total</u>
<b>2110 Supervision of Student Services</b>				
<b>100 Personnel Services – Salaries</b>				
100 Personnel Services – Salaries	50,785.90	45,036.56		95,822.46
<b>Total Personnel Services – Salaries</b>	<b>\$50,785.90</b>	<b>\$45,036.56</b>		<b>\$95,822.46</b>
<b>200 Personnel Services – Employee Benefits</b>				
210 Group Insurance – Contracted Provider	136.86	121.36		258.22
220 Social Security Contributions	3,897.39	3,456.18		7,353.57
230 PSERS Retirement Contributions	17,192.21	15,245.92		32,438.13
260 Workers' Compensation	319.27	283.13		602.40
270 Group Insurance – Self-Insurance	4,969.94	4,407.31		9,377.25
299 All Other Employee Benefits	256.52	227.48		484.00
<b>Total Personnel Services – Employee Benefits</b>	<b>\$26,772.19</b>	<b>\$23,741.38</b>		<b>\$50,513.57</b>
<b>400 Purchased Property Services</b>				
430 Repairs and Maintenance Services	341.74	303.05		644.79
<b>Total Purchased Property Services</b>	<b>\$341.74</b>	<b>\$303.05</b>		<b>\$644.79</b>
<b>500 Other Purchased Services</b>				
530 Communications	13.14	11.66		24.80
550 Printing and Binding	191.47	169.79		361.26
580 Travel	400.01	354.72		754.73
<b>Total Other Purchased Services</b>	<b>\$604.62</b>	<b>\$536.17</b>		<b>\$1,140.79</b>
<b>600 Supplies</b>				
610 General Supplies	385.74	342.08		727.82
630 Food	200.99	178.24		379.23
640 Books and Periodicals	499.60	443.05		942.65
<b>Total Supplies</b>	<b>\$1,086.33</b>	<b>\$963.37</b>		<b>\$2,049.70</b>
<b>800 Other Objects</b>				
810 Dues and Fees	47.17	41.83		89.00
<b>Total Other Objects</b>	<b>\$47.17</b>	<b>\$41.83</b>		<b>\$89.00</b>
<b>Total 2110 Supervision of Student Services</b>	<b>\$79,637.95</b>	<b>\$70,622.36</b>		<b>\$150,260.31</b>

**General Fund (10)**

	<u>Elementary</u>	<u>Secondary</u>	<u>Federal</u>	<u>Total</u>
<b>2111 Supervision of Student Services – Head of Component</b>				
<b>100 Personnel Services – Salaries</b>				
100 Personnel Services – Salaries	50,785.90	45,036.56		95,822.46
<b>Total Personnel Services – Salaries</b>	<b>\$50,785.90</b>	<b>\$45,036.56</b>		<b>\$95,822.46</b>
<b>200 Personnel Services – Employee Benefits</b>				
210 Group Insurance – Contracted Provider	136.86	121.36		258.22
220 Social Security Contributions	3,897.39	3,456.18		7,353.57
230 PSERS Retirement Contributions	17,192.21	15,245.92		32,438.13
260 Workers' Compensation	319.27	283.13		602.40
270 Group Insurance – Self-Insurance	4,969.94	4,407.31		9,377.25
299 All Other Employee Benefits	256.52	227.48		484.00
<b>Total Personnel Services – Employee Benefits</b>	<b>\$26,772.19</b>	<b>\$23,741.38</b>		<b>\$50,513.57</b>
<b>400 Purchased Property Services</b>				
430 Repairs and Maintenance Services	341.74	303.05		644.79
<b>Total Purchased Property Services</b>	<b>\$341.74</b>	<b>\$303.05</b>		<b>\$644.79</b>
<b>500 Other Purchased Services</b>				
530 Communications	13.14	11.66		24.80
550 Printing and Binding	191.47	169.79		361.26
580 Travel	400.01	354.72		754.73
<b>Total Other Purchased Services</b>	<b>\$604.62</b>	<b>\$536.17</b>		<b>\$1,140.79</b>
<b>600 Supplies</b>				
610 General Supplies	385.74	342.08		727.82
630 Food	200.99	178.24		379.23
640 Books and Periodicals	499.60	443.05		942.65
<b>Total Supplies</b>	<b>\$1,086.33</b>	<b>\$963.37</b>		<b>\$2,049.70</b>
<b>800 Other Objects</b>				
810 Dues and Fees	47.17	41.83		89.00
<b>Total Other Objects</b>	<b>\$47.17</b>	<b>\$41.83</b>		<b>\$89.00</b>
<b>Total 2111 Supervision of Student Services – Head of Component</b>	<b>\$79,637.95</b>	<b>\$70,622.36</b>		<b>\$150,260.31</b>

**General Fund (10)**

	<u>Elementary</u>	<u>Secondary</u>	<u>Federal</u>	<u>Total</u>
<b>2120 Guidance Services</b>				
<b>100 Personnel Services – Salaries</b>				
100 Personnel Services – Salaries	635,735.50	766,835.39		1,402,570.89
<b>Total Personnel Services – Salaries</b>	<b>\$635,735.50</b>	<b>\$766,835.39</b>		<b>\$1,402,570.89</b>
<b>200 Personnel Services – Employee Benefits</b>				
210 Group Insurance – Contracted Provider	2,288.30	2,851.94		5,140.24
220 Social Security Contributions	47,964.23	57,658.19		105,622.42
230 PSERS Retirement Contributions	217,650.62	262,304.57		479,955.19
260 Workers' Compensation	3,321.37	4,564.51		7,885.88
270 Group Insurance – Self-Insurance	108,105.38	128,567.24		236,672.62
292 Health Savings Accounts	7,000.00	14,000.00		21,000.00
<b>Total Personnel Services – Employee Benefits</b>	<b>\$386,329.90</b>	<b>\$469,946.45</b>		<b>\$856,276.35</b>
<b>300 Purchased Professional and Technical Services</b>				
340 Technical Services	2,265.00			2,265.00
<b>Total Purchased Professional and Technical Services</b>	<b>\$2,265.00</b>			<b>\$2,265.00</b>
<b>400 Purchased Property Services</b>				
430 Repairs and Maintenance Services	469.80	441.48		911.28
<b>Total Purchased Property Services</b>	<b>\$469.80</b>	<b>\$441.48</b>		<b>\$911.28</b>
<b>500 Other Purchased Services</b>				
510 Student Transportation Services		2,093.26		2,093.26
530 Communications		570.46		570.46
550 Printing and Binding		848.00		848.00
<b>Total Other Purchased Services</b>		<b>\$3,511.72</b>		<b>\$3,511.72</b>
<b>600 Supplies</b>				
610 General Supplies	866.81	369.55		1,236.36
630 Food		638.06		638.06
640 Books and Periodicals	126.56			126.56
650 Supplies & Fees – Technology Related	50,950.84	31,576.15		82,526.99
<b>Total Supplies</b>	<b>\$51,944.21</b>	<b>\$32,583.76</b>		<b>\$84,527.97</b>
<b>800 Other Objects</b>				
810 Dues and Fees		1,695.00		1,695.00
<b>Total Other Objects</b>		<b>\$1,695.00</b>		<b>\$1,695.00</b>
<b>Total 2120 Guidance Services</b>	<b>\$1,076,744.41</b>	<b>\$1,275,013.80</b>		<b>\$2,351,758.21</b>

**General Fund (10)**

	<u>Elementary</u>	<u>Secondary</u>	<u>Federal</u>	<u>Total</u>
<b>2130 Attendance Services</b>				
<b>100 Personnel Services – Salaries</b>				
100 Personnel Services – Salaries				67,828.02
<b>Total Personnel Services – Salaries</b>				<b>\$67,828.02</b>
<b>200 Personnel Services – Employee Benefits</b>				
210 Group Insurance – Contracted Provider				207.98
220 Social Security Contributions				4,996.98
230 PSERS Retirement Contributions				23,258.30
260 Workers' Compensation				383.34
270 Group Insurance – Self-Insurance				7,329.24
291 Other Retirement Plans				9,459.96
292 Health Savings Accounts				1,000.00
299 All Other Employee Benefits				120.00
<b>Total Personnel Services – Employee Benefits</b>				<b>\$46,755.80</b>
<b>300 Purchased Professional and Technical Services</b>				
330 Other Professional Services				500.00
<b>Total Purchased Professional and Technical Services</b>				<b>\$500.00</b>
<b>500 Other Purchased Services</b>				
580 Travel				317.93
<b>Total Other Purchased Services</b>				<b>\$317.93</b>
<b>Total 2130 Attendance Services</b>				<b>\$115,401.75</b>



**General Fund (10)**

	<u>Elementary</u>	<u>Secondary</u>	<u>Federal</u>	<u>Total</u>
<b>2140 Psychological Services</b>				
<b>100 Personnel Services – Salaries</b>				
100 Personnel Services – Salaries	254,289.53	218,823.68		473,113.21
<b>Total Personnel Services – Salaries</b>	<b>\$254,289.53</b>	<b>\$218,823.68</b>		<b>\$473,113.21</b>
<b>200 Personnel Services – Employee Benefits</b>				
210 Group Insurance – Contracted Provider	982.28	879.52		1,861.80
220 Social Security Contributions	19,160.18	16,573.06		35,733.24
230 PSERS Retirement Contributions	86,981.64	74,991.82		161,973.46
260 Workers' Compensation	1,900.83	1,384.96		3,285.79
270 Group Insurance – Self-Insurance	46,865.52	38,907.66		85,773.18
292 Health Savings Accounts	6,200.00	4,800.00		11,000.00
<b>Total Personnel Services – Employee Benefits</b>	<b>\$162,090.45</b>	<b>\$137,537.02</b>		<b>\$299,627.47</b>
<b>300 Purchased Professional and Technical Services</b>				
330 Other Professional Services		5,254.75		5,254.75
<b>Total Purchased Professional and Technical Services</b>		<b>\$5,254.75</b>		<b>\$5,254.75</b>
<b>500 Other Purchased Services</b>				
530 Communications	1,077.68	1,151.27		2,228.95
580 Travel	83.24	23.44		106.68
<b>Total Other Purchased Services</b>	<b>\$1,160.92</b>	<b>\$1,174.71</b>		<b>\$2,335.63</b>
<b>600 Supplies</b>				
610 General Supplies	8,582.49	7,610.88		16,193.37
650 Supplies & Fees – Technology Related	2,083.06	1,847.24		3,930.30
<b>Total Supplies</b>	<b>\$10,665.55</b>	<b>\$9,458.12</b>		<b>\$20,123.67</b>
<b>Total 2140 Psychological Services</b>	<b>\$428,206.45</b>	<b>\$372,248.28</b>		<b>\$800,454.73</b>

**General Fund (10)**

	<u>Elementary</u>	<u>Secondary</u>	<u>Federal</u>	<u>Total</u>
<b>2160 Social Work Services</b>				
<b>100 Personnel Services – Salaries</b>				
100 Personnel Services – Salaries				120,012.00
<b>Total Personnel Services – Salaries</b>				<b>\$120,012.00</b>
<b>200 Personnel Services – Employee Benefits</b>				
210 Group Insurance – Contracted Provider				443.82
220 Social Security Contributions				8,943.15
230 PSERS Retirement Contributions				41,152.00
260 Workers' Compensation				328.58
270 Group Insurance – Self-Insurance				31,074.14
292 Health Savings Accounts				2,000.00
<b>Total Personnel Services – Employee Benefits</b>				<b>\$83,941.69</b>
<b>500 Other Purchased Services</b>				
550 Printing and Binding				35.25
580 Travel				1,346.52
<b>Total Other Purchased Services</b>				<b>\$1,381.77</b>
<b>600 Supplies</b>				
650 Supplies & Fees – Technology Related				1,468.30
<b>Total Supplies</b>				<b>\$1,468.30</b>
<b>Total 2160 Social Work Services</b>				<b>\$206,803.76</b>

General Fund (10)

2170 Student Accounting Services

Elementary

Secondary

Federal

Total

100 Personnel Services – Salaries

100 Personnel Services – Salaries

111,862.34

**Total Personnel Services – Salaries**

**\$111,862.34**

200 Personnel Services – Employee Benefits

210 Group Insurance – Contracted Provider

397.54

220 Social Security Contributions

8,410.24

230 PSERS Retirement Contributions

38,302.45

260 Workers' Compensation

766.68

270 Group Insurance – Self-Insurance

36,204.71

292 Health Savings Accounts

5,000.00

**Total Personnel Services – Employee Benefits**

**\$89,081.62**

300 Purchased Professional and Technical Services

340 Technical Services

60,668.79

**Total Purchased Professional and Technical Services**

**\$60,668.79**

600 Supplies

640 Books and Periodicals

73.42

650 Supplies & Fees – Technology Related

5,131.00

**Total Supplies**

**\$5,204.42**

800 Other Objects

810 Dues and Fees

185.00

**Total Other Objects**

**\$185.00**

**Total 2170 Student Accounting Services**

**\$267,002.17**

General Fund (10)

2190 Other Student Services

300 Purchased Professional and Technical Services

	<u>Elementary</u>	<u>Secondary</u>	<u>Federal</u>	<u>Total</u>
330 Other Professional Services	23,691.00	21,029.00		44,720.00
390 Other Purchased Professional and Technical Services	7,211.19	5,868.39		13,079.58
<b>Total Purchased Professional and Technical Services</b>	<b>\$30,902.19</b>	<b>\$26,897.39</b>		<b>\$57,799.58</b>
<b>Total 2190 Other Student Services</b>	<b>\$30,902.19</b>	<b>\$26,897.39</b>		<b>\$57,799.58</b>

**General Fund (10)**

**2200 Support Services – Instructional Staff**

	<u>Elementary</u>	<u>Secondary</u>	<u>Federal</u>	<u>Total</u>
<b>100 Personnel Services – Salaries</b>				
100 Personnel Services – Salaries	1,371,370.79	957,074.75	74,458.68	2,402,904.22
<b>Total Personnel Services – Salaries</b>	<b>\$1,371,370.79</b>	<b>\$957,074.75</b>	<b>\$74,458.68</b>	<b>\$2,402,904.22</b>
<b>200 Personnel Services – Employee Benefits</b>				
210 Group Insurance – Contracted Provider	4,577.25	3,123.21	178.32	7,878.78
220 Social Security Contributions	103,596.60	72,476.49	5,630.82	181,703.91
230 PSERS Retirement Contributions	467,547.52	324,899.57	25,454.61	817,901.70
240 Tuition Reimbursement	216,205.57	205,545.00		421,750.57
260 Workers' Compensation	8,405.60	6,051.87	273.82	14,731.29
270 Group Insurance – Self-Insurance	248,415.78	187,484.01	8,260.71	444,160.50
292 Health Savings Accounts	25,386.20	15,053.80	2,100.00	42,540.00
299 All Other Employee Benefits	4,603.89	3,417.13		8,021.02
<b>Total Personnel Services – Employee Benefits</b>	<b>\$1,078,738.41</b>	<b>\$818,051.08</b>	<b>\$41,898.28</b>	<b>\$1,938,687.77</b>
<b>300 Purchased Professional and Technical Services</b>				
329 Professional Educational Services – Other	5,140.82	1,722.92		6,863.74
330 Other Professional Services			9,122.43	9,122.43
340 Technical Services	36,470.49	32,483.26	7,500.00	76,453.75
360 Employee Training and Development Services	4,052.00	24,147.00		28,199.00
390 Other Purchased Professional and Technical Services	1,305.75	1,970.59		3,276.34
<b>Total Purchased Professional and Technical Services</b>	<b>\$46,969.06</b>	<b>\$60,323.77</b>	<b>\$16,622.43</b>	<b>\$123,915.26</b>
<b>400 Purchased Property Services</b>				
430 Repairs and Maintenance Services	17,769.92	12,735.07		30,504.99
<b>Total Purchased Property Services</b>	<b>\$17,769.92</b>	<b>\$12,735.07</b>		<b>\$30,504.99</b>
<b>500 Other Purchased Services</b>				
530 Communications	23,125.36	23,242.87		46,368.23
550 Printing and Binding	344.12	377.21		721.33
580 Travel	5,011.08	10,125.54		15,136.62
<b>Total Other Purchased Services</b>	<b>\$28,480.56</b>	<b>\$33,745.62</b>		<b>\$62,226.18</b>
<b>600 Supplies</b>				
610 General Supplies	16,665.32	15,420.55		32,085.87
630 Food	1,839.46	1,458.02		3,297.48
640 Books and Periodicals	70,962.03	19,518.21	407.30	90,887.54
650 Supplies & Fees – Technology Related	208,242.93	249,908.34		458,151.27
<b>Total Supplies</b>	<b>\$297,709.74</b>	<b>\$286,305.12</b>	<b>\$407.30</b>	<b>\$584,422.16</b>
<b>800 Other Objects</b>				
810 Dues and Fees	2,497.44	2,513.05		5,010.49
<b>Total Other Objects</b>	<b>\$2,497.44</b>	<b>\$2,513.05</b>		<b>\$5,010.49</b>
<b>Total 2200 Support Services – Instructional Staff</b>	<b>\$2,843,535.92</b>	<b>\$2,170,748.46</b>	<b>\$133,386.69</b>	<b>\$5,147,671.07</b>

**General Fund (10)**

	<u>Elementary</u>	<u>Secondary</u>	<u>Federal</u>	<u>Total</u>
<b>2210 Supervision of Educational Media Services</b>				
<b>100 Personnel Services – Salaries</b>				
100 Personnel Services – Salaries	50,727.60	44,984.85		95,712.45
<b>Total Personnel Services – Salaries</b>	<b>\$50,727.60</b>	<b>\$44,984.85</b>		<b>\$95,712.45</b>
<b>200 Personnel Services – Employee Benefits</b>				
210 Group Insurance – Contracted Provider	189.59	168.13		357.72
220 Social Security Contributions	3,849.42	3,413.64		7,263.06
230 PSERS Retirement Contributions	17,394.47	15,425.28		32,819.75
260 Workers' Compensation	319.27	283.12		602.39
270 Group Insurance – Self-Insurance	7,961.84	7,060.51		15,022.35
299 All Other Employee Benefits	805.14	713.99		1,519.13
<b>Total Personnel Services – Employee Benefits</b>	<b>\$30,519.73</b>	<b>\$27,064.67</b>		<b>\$57,584.40</b>
<b>Total 2210 Supervision of Educational Media Services</b>	<b>\$81,247.33</b>	<b>\$72,049.52</b>		<b>\$153,296.85</b>

General Fund (10)

2211 Supervision of Educational Media Services – Head of Component

	<u>Elementary</u>	<u>Secondary</u>	<u>Federal</u>	<u>Total</u>
<b>100 Personnel Services – Salaries</b>				
100 Personnel Services – Salaries	50,727.60	44,984.85		95,712.45
<b>Total Personnel Services – Salaries</b>	<b>\$50,727.60</b>	<b>\$44,984.85</b>		<b>\$95,712.45</b>
<b>200 Personnel Services – Employee Benefits</b>				
210 Group Insurance – Contracted Provider	189.59	168.13		357.72
220 Social Security Contributions	3,849.42	3,413.64		7,263.06
230 PSERS Retirement Contributions	17,394.47	15,425.28		32,819.75
260 Workers' Compensation	319.27	283.12		602.39
270 Group Insurance – Self-Insurance	7,961.84	7,060.51		15,022.35
299 All Other Employee Benefits	805.14	713.99		1,519.13
<b>Total Personnel Services – Employee Benefits</b>	<b>\$30,519.73</b>	<b>\$27,064.67</b>		<b>\$57,584.40</b>
<b>Total 2211 Supervision of Educational Media Services – Head of Component</b>	<b>\$81,247.33</b>	<b>\$72,049.52</b>		<b>\$153,296.85</b>

**General Fund (10)**

**2220 Technology Support Services**

	<u>Elementary</u>	<u>Secondary</u>	<u>Federal</u>	<u>Total</u>
<b>100 Personnel Services – Salaries</b>				
100 Personnel Services – Salaries	350,769.94	233,927.33	74,458.68	659,155.95
<b>Total Personnel Services – Salaries</b>	<b>\$350,769.94</b>	<b>\$233,927.33</b>	<b>\$74,458.68</b>	<b>\$659,155.95</b>
<b>200 Personnel Services – Employee Benefits</b>				
210 Group Insurance – Contracted Provider	1,238.35	690.07	178.32	2,106.74
220 Social Security Contributions	26,125.01	17,598.26	5,630.82	49,354.09
230 PSERS Retirement Contributions	119,617.53	79,732.66	25,454.61	224,804.80
260 Workers' Compensation	2,582.08	1,689.44	273.82	4,545.34
270 Group Insurance – Self-Insurance	93,932.74	72,352.82	8,260.71	174,546.27
292 Health Savings Accounts	6,528.00	3,972.00	2,100.00	12,600.00
299 All Other Employee Benefits	1,512.83	1,341.57		2,854.40
<b>Total Personnel Services – Employee Benefits</b>	<b>\$251,536.54</b>	<b>\$177,376.82</b>	<b>\$41,898.28</b>	<b>\$470,811.64</b>
<b>300 Purchased Professional and Technical Services</b>				
340 Technical Services	35,538.49	31,515.26		67,053.75
<b>Total Purchased Professional and Technical Services</b>	<b>\$35,538.49</b>	<b>\$31,515.26</b>		<b>\$67,053.75</b>
<b>400 Purchased Property Services</b>				
430 Repairs and Maintenance Services	17,251.90	12,355.73		29,607.63
<b>Total Purchased Property Services</b>	<b>\$17,251.90</b>	<b>\$12,355.73</b>		<b>\$29,607.63</b>
<b>500 Other Purchased Services</b>				
530 Communications	23,086.36	23,203.87		46,290.23
550 Printing and Binding	291.50	258.50		550.00
580 Travel	1,814.59	1,609.17		3,423.76
<b>Total Other Purchased Services</b>	<b>\$25,192.45</b>	<b>\$25,071.54</b>		<b>\$50,263.99</b>
<b>600 Supplies</b>				
610 General Supplies	9,683.57	10,526.96		20,210.53
630 Food	263.13	233.35		496.48
650 Supplies & Fees – Technology Related	136,434.06	171,582.09		308,016.15
<b>Total Supplies</b>	<b>\$146,380.76</b>	<b>\$182,342.40</b>		<b>\$328,723.16</b>
<b>800 Other Objects</b>				
810 Dues and Fees	2,397.45	2,126.05		4,523.50
<b>Total Other Objects</b>	<b>\$2,397.45</b>	<b>\$2,126.05</b>		<b>\$4,523.50</b>
<b>Total 2220 Technology Support Services</b>	<b>\$829,067.53</b>	<b>\$664,715.13</b>	<b>\$116,356.96</b>	<b>\$1,610,139.62</b>



**General Fund (10)**

	<u>Elementary</u>	<u>Secondary</u>	<u>Federal</u>	<u>Total</u>
<b>2250 School Library Services</b>				
<b>100 Personnel Services – Salaries</b>				
100 Personnel Services – Salaries	407,844.37	192,792.66		600,637.03
<b>Total Personnel Services – Salaries</b>	<b>\$407,844.37</b>	<b>\$192,792.66</b>		<b>\$600,637.03</b>
<b>200 Personnel Services – Employee Benefits</b>				
210 Group Insurance – Contracted Provider	1,250.27	555.13		1,805.40
220 Social Security Contributions	30,848.24	14,708.06		45,556.30
230 PSERS Retirement Contributions	139,635.65	65,082.17		204,717.82
260 Workers' Compensation	2,409.59	1,259.55		3,669.14
270 Group Insurance – Self-Insurance	53,498.10	23,713.78		77,211.88
292 Health Savings Accounts	7,000.00	3,000.00		10,000.00
<b>Total Personnel Services – Employee Benefits</b>	<b>\$234,641.85</b>	<b>\$108,318.69</b>		<b>\$342,960.54</b>
<b>300 Purchased Professional and Technical Services</b>				
329 Professional Educational Services – Other	4,181.42	1,722.92		5,904.34
390 Other Purchased Professional and Technical Services	1,305.75	1,970.59		3,276.34
<b>Total Purchased Professional and Technical Services</b>	<b>\$5,487.17</b>	<b>\$3,693.51</b>		<b>\$9,180.68</b>
<b>400 Purchased Property Services</b>				
430 Repairs and Maintenance Services	152.64	55.32		207.96
<b>Total Purchased Property Services</b>	<b>\$152.64</b>	<b>\$55.32</b>		<b>\$207.96</b>
<b>600 Supplies</b>				
610 General Supplies	5,786.23	3,916.91		9,703.14
640 Books and Periodicals	67,635.58	18,796.79		86,432.37
650 Supplies & Fees – Technology Related	33,518.41	42,858.90		76,377.31
<b>Total Supplies</b>	<b>\$106,940.22</b>	<b>\$65,572.60</b>		<b>\$172,512.82</b>
<b>800 Other Objects</b>				
810 Dues and Fees		222.00		222.00
<b>Total Other Objects</b>		<b>\$222.00</b>		<b>\$222.00</b>
<b>Total 2250 School Library Services</b>	<b>\$755,066.25</b>	<b>\$370,654.78</b>		<b>\$1,125,721.03</b>

**General Fund (10)**

**2260 Instruction and Curriculum Development Services**

	<u>Elementary</u>	<u>Secondary</u>	<u>Federal</u>	<u>Total</u>
<b>100 Personnel Services – Salaries</b>				
100 Personnel Services – Salaries	551,710.68	478,514.18		1,030,224.86
<b>Total Personnel Services – Salaries</b>	<b>\$551,710.68</b>	<b>\$478,514.18</b>		<b>\$1,030,224.86</b>
<b>200 Personnel Services – Employee Benefits</b>				
210 Group Insurance – Contracted Provider	1,899.04	1,709.88		3,608.92
220 Social Security Contributions	42,108.57	36,341.48		78,450.05
230 PSERS Retirement Contributions	187,361.78	162,308.67		349,670.45
260 Workers' Compensation	3,094.66	2,819.76		5,914.42
270 Group Insurance – Self-Insurance	93,023.10	84,356.90		177,380.00
292 Health Savings Accounts	11,858.20	8,081.80		19,940.00
299 All Other Employee Benefits	2,285.92	1,361.57		3,647.49
<b>Total Personnel Services – Employee Benefits</b>	<b>\$341,631.27</b>	<b>\$296,980.06</b>		<b>\$638,611.33</b>
<b>300 Purchased Professional and Technical Services</b>				
329 Professional Educational Services – Other	959.40			959.40
340 Technical Services	1,250.00	1,250.00		2,500.00
<b>Total Purchased Professional and Technical Services</b>	<b>\$2,209.40</b>	<b>\$1,250.00</b>		<b>\$3,459.40</b>
<b>500 Other Purchased Services</b>				
530 Communications	39.00	39.00		78.00
550 Printing and Binding	52.62	118.71		171.33
580 Travel	1,809.39	1,143.19		2,952.58
<b>Total Other Purchased Services</b>	<b>\$1,901.01</b>	<b>\$1,300.90</b>		<b>\$3,201.91</b>
<b>600 Supplies</b>				
610 General Supplies	1,057.21	805.02		1,862.23
630 Food	56.25			56.25
640 Books and Periodicals	264.29	196.74		461.03
650 Supplies & Fees – Technology Related	24,937.48	22,114.37		47,051.85
<b>Total Supplies</b>	<b>\$26,315.23</b>	<b>\$23,116.13</b>		<b>\$49,431.36</b>
<b>800 Other Objects</b>				
810 Dues and Fees	99.99	165.00		264.99
<b>Total Other Objects</b>	<b>\$99.99</b>	<b>\$165.00</b>		<b>\$264.99</b>
<b>Total 2260 Instruction and Curriculum Development Services</b>	<b>\$923,867.58</b>	<b>\$801,326.27</b>		<b>\$1,725,193.85</b>

**General Fund (10)**

	<u>Elementary</u>	<u>Secondary</u>	<u>Federal</u>	<u>Total</u>
<b>2270 Instructional Staff Professional Development Services</b>				
<b>100 Personnel Services – Salaries</b>				
100 Personnel Services – Salaries	10,318.20	6,855.73		17,173.93
<b>Total Personnel Services – Salaries</b>	<b>\$10,318.20</b>	<b>\$6,855.73</b>		<b>\$17,173.93</b>
<b>200 Personnel Services – Employee Benefits</b>				
220 Social Security Contributions	665.36	415.05		1,080.41
230 PSERS Retirement Contributions	3,538.09	2,350.79		5,888.88
240 Tuition Reimbursement	216,205.57	205,545.00		421,750.57
<b>Total Personnel Services – Employee Benefits</b>	<b>\$220,409.02</b>	<b>\$208,310.84</b>		<b>\$428,719.86</b>
<b>300 Purchased Professional and Technical Services</b>				
330 Other Professional Services			2,800.00	2,800.00
340 Technical Services	(318.00)	(282.00)	7,500.00	6,900.00
360 Employee Training and Development Services	4,052.00	24,147.00		28,199.00
<b>Total Purchased Professional and Technical Services</b>	<b>\$3,734.00</b>	<b>\$23,865.00</b>	<b>\$10,300.00</b>	<b>\$37,899.00</b>
<b>400 Purchased Property Services</b>				
430 Repairs and Maintenance Services	365.38	324.02		689.40
<b>Total Purchased Property Services</b>	<b>\$365.38</b>	<b>\$324.02</b>		<b>\$689.40</b>
<b>500 Other Purchased Services</b>				
580 Travel	1,387.10	7,373.18		8,760.28
<b>Total Other Purchased Services</b>	<b>\$1,387.10</b>	<b>\$7,373.18</b>		<b>\$8,760.28</b>
<b>600 Supplies</b>				
610 General Supplies	138.31	171.66		309.97
630 Food	1,520.08	1,224.67		2,744.75
640 Books and Periodicals	3,062.16	524.68	407.30	3,994.14
650 Supplies & Fees – Technology Related	13,352.98	13,352.98		26,705.96
<b>Total Supplies</b>	<b>\$18,073.53</b>	<b>\$15,273.99</b>	<b>\$407.30</b>	<b>\$33,754.82</b>
<b>Total 2270 Instructional Staff Professional Development Services</b>	<b>\$254,287.23</b>	<b>\$262,002.76</b>	<b>\$10,707.30</b>	<b>\$526,997.29</b>

General Fund (10)

2280 Nonpublic Support Services

300 Purchased Professional and Technical Services

330 Other Professional Services

**Total Purchased Professional and Technical Services**

**Total 2280 Nonpublic Support Services**

Elementary

Secondary

Federal

Total

6,322.43

6,322.43

**\$6,322.43**

**\$6,322.43**

**\$6,322.43**

**\$6,322.43**

**General Fund (10)**

	<u>Elementary</u>	<u>Secondary</u>	<u>Federal</u>	<u>Total</u>
<b>2300 Support Services – Administration</b>				
<b>100 Personnel Services – Salaries</b>				
100 Personnel Services – Salaries	1,246,019.38	1,111,395.65		2,989,564.19
<b>Total Personnel Services – Salaries</b>	<b>\$1,246,019.38</b>	<b>\$1,111,395.65</b>		<b>\$2,989,564.19</b>
<b>200 Personnel Services – Employee Benefits</b>				
210 Group Insurance – Contracted Provider	4,226.03	4,044.77		10,336.88
220 Social Security Contributions	94,366.17	83,398.91		221,367.75
230 PSERS Retirement Contributions	427,365.86	379,772.54		1,023,902.44
260 Workers' Compensation	7,776.36	6,133.46		16,757.49
270 Group Insurance – Self-Insurance	242,672.65	228,232.50		556,783.38
291 Other Retirement Plans				3,250.00
292 Health Savings Accounts	27,000.00	26,000.00		63,631.00
299 All Other Employee Benefits	7,057.94	4,781.98		14,963.72
<b>Total Personnel Services – Employee Benefits</b>	<b>\$810,465.01</b>	<b>\$732,364.16</b>		<b>\$1,910,992.66</b>
<b>300 Purchased Professional and Technical Services</b>				
310 Official / Administrative Services				135,849.32
330 Other Professional Services				192,107.55
350 Security / Safety Services				225.00
390 Other Purchased Professional and Technical Services	13,703.79	11,249.75		24,953.54
<b>Total Purchased Professional and Technical Services</b>	<b>\$13,703.79</b>	<b>\$11,249.75</b>		<b>\$353,135.41</b>
<b>400 Purchased Property Services</b>				
430 Repairs and Maintenance Services	189.84	876.00		1,275.60
<b>Total Purchased Property Services</b>	<b>\$189.84</b>	<b>\$876.00</b>		<b>\$1,275.60</b>
<b>500 Other Purchased Services</b>				
520 Insurance – General				316.00
530 Communications	1,264.88	2,395.78		4,850.77
549 Other Advertising/Public Relations				626.82
550 Printing and Binding	207.08	181.25		2,455.08
580 Travel		89.32		1,557.90
<b>Total Other Purchased Services</b>	<b>\$1,471.96</b>	<b>\$2,666.35</b>		<b>\$9,806.57</b>
<b>600 Supplies</b>				
610 General Supplies	1,467.79	19,138.74		28,352.88
630 Food	3,296.66	3,597.12		10,048.62
640 Books and Periodicals	1,656.17	253.33		2,560.80
650 Supplies & Fees – Technology Related	22,956.60	13,352.84		44,497.44
<b>Total Supplies</b>	<b>\$29,377.22</b>	<b>\$36,342.03</b>		<b>\$85,459.74</b>
<b>700 Property</b>				
756 Capitalized Technology Equipment – Original		17,276.89		17,276.89
<b>Total Property</b>		<b>\$17,276.89</b>		<b>\$17,276.89</b>
<b>800 Other Objects</b>				
810 Dues and Fees	3,125.00	4,211.00		38,769.67
820 Claims and Judgments Against the LEA				14,976.00

General Fund (10)

2300 Support Services – Administration

800 Other Objects

890 Miscellaneous Expenditures

Total Other Objects

Total 2300 Support Services – Administration

Elementary

Secondary

Federal

Total

200.00

200.00

\$3,125.00

\$4,411.00

\$53,945.67

\$2,104,352.20

\$1,916,581.83

\$5,421,456.73

General Fund (10)

2310 Board Services

Elementary

Secondary

Federal

Total

300 Purchased Professional and Technical Services

350 Security / Safety Services

225.00

**Total Purchased Professional and Technical Services**

**\$225.00**

500 Other Purchased Services

520 Insurance – General

316.00

549 Other Advertising/Public Relations

626.82

**Total Other Purchased Services**

**\$942.82**

600 Supplies

610 General Supplies

241.46

630 Food

463.42

640 Books and Periodicals

236.97

**Total Supplies**

**\$941.85**

800 Other Objects

810 Dues and Fees

18,347.57

820 Claims and Judgments Against the LEA

14,976.00

**Total Other Objects**

**\$33,323.57**

**Total 2310 Board Services**

**\$35,433.24**





General Fund (10)

2350 Legal and Accounting Services

Elementary

Secondary

Federal

Total

300 Purchased Professional and Technical Services

330 Other Professional Services

192,107.55

**Total Purchased Professional and Technical Services**

**\$192,107.55**

**Total 2350 Legal and Accounting Services**

**\$192,107.55**

**General Fund (10)**

**2360 Office of the Superintendent / Executive Director Services**

	<u>Elementary</u>	<u>Secondary</u>	<u>Federal</u>	<u>Total</u>
<b>100 Personnel Services – Salaries</b>				
100 Personnel Services – Salaries				566,118.51
<b>Total Personnel Services – Salaries</b>				<b>\$566,118.51</b>
<b>200 Personnel Services – Employee Benefits</b>				
210 Group Insurance – Contracted Provider				1,866.46
220 Social Security Contributions				38,576.97
230 PSERS Retirement Contributions				194,122.12
260 Workers' Compensation				2,409.57
270 Group Insurance – Self-Insurance				71,001.23
291 Other Retirement Plans				3,250.00
292 Health Savings Accounts				8,620.00
299 All Other Employee Benefits				2,493.80
<b>Total Personnel Services – Employee Benefits</b>				<b>\$322,340.15</b>
<b>400 Purchased Property Services</b>				
430 Repairs and Maintenance Services				209.76
<b>Total Purchased Property Services</b>				<b>\$209.76</b>
<b>500 Other Purchased Services</b>				
530 Communications	237.41	210.54		447.95
550 Printing and Binding				30.83
580 Travel				1,468.58
<b>Total Other Purchased Services</b>	<b>\$237.41</b>	<b>\$210.54</b>		<b>\$1,947.36</b>
<b>600 Supplies</b>				
610 General Supplies				313.73
630 Food				2,328.32
640 Books and Periodicals				414.33
<b>Total Supplies</b>				<b>\$3,056.38</b>
<b>800 Other Objects</b>				
810 Dues and Fees				9,295.00
<b>Total Other Objects</b>				<b>\$9,295.00</b>
<b>Total 2360 Office of the Superintendent / Executive Director Services</b>	<b>\$237.41</b>	<b>\$210.54</b>		<b>\$902,967.16</b>

**General Fund (10)**

**2370 Community Relations Services**

Elementary

Secondary

Federal

Total

**100 Personnel Services – Salaries**

100 Personnel Services – Salaries

36,742.60

**Total Personnel Services – Salaries**

**\$36,742.60**

**200 Personnel Services – Employee Benefits**

210 Group Insurance – Contracted Provider

166.14

220 Social Security Contributions

2,807.83

230 PSERS Retirement Contributions

12,599.06

260 Workers' Compensation

438.10

270 Group Insurance – Self-Insurance

7,861.54

292 Health Savings Accounts

1,011.00

299 All Other Employee Benefits

105.00

**Total Personnel Services – Employee Benefits**

**\$24,988.67**

**600 Supplies**

650 Supplies & Fees – Technology Related

198.00

**Total Supplies**

**\$198.00**

**Total 2370 Community Relations Services**

**\$61,929.27**

**General Fund (10)**

**2380 Office of the Principal Services**

	<u>Elementary</u>	<u>Secondary</u>	<u>Federal</u>	<u>Total</u>
<b>100 Personnel Services – Salaries</b>				
100 Personnel Services – Salaries	1,246,019.38	1,111,395.65		2,357,415.03
<b>Total Personnel Services – Salaries</b>	<b>\$1,246,019.38</b>	<b>\$1,111,395.65</b>		<b>\$2,357,415.03</b>
<b>200 Personnel Services – Employee Benefits</b>				
210 Group Insurance – Contracted Provider	4,226.03	4,044.77		8,270.80
220 Social Security Contributions	94,366.17	83,398.91		177,765.08
230 PSERS Retirement Contributions	427,365.86	379,772.54		807,138.40
260 Workers' Compensation	7,776.36	6,133.46		13,909.82
270 Group Insurance – Self-Insurance	242,672.65	228,232.50		470,905.15
292 Health Savings Accounts	27,000.00	26,000.00		53,000.00
299 All Other Employee Benefits	7,057.94	4,781.98		11,839.92
<b>Total Personnel Services – Employee Benefits</b>	<b>\$810,465.01</b>	<b>\$732,364.16</b>		<b>\$1,542,829.17</b>
<b>300 Purchased Professional and Technical Services</b>				
390 Other Purchased Professional and Technical Services	13,703.79	11,249.75		24,953.54
<b>Total Purchased Professional and Technical Services</b>	<b>\$13,703.79</b>	<b>\$11,249.75</b>		<b>\$24,953.54</b>
<b>400 Purchased Property Services</b>				
430 Repairs and Maintenance Services	189.84	876.00		1,065.84
<b>Total Purchased Property Services</b>	<b>\$189.84</b>	<b>\$876.00</b>		<b>\$1,065.84</b>
<b>500 Other Purchased Services</b>				
530 Communications	1,027.47	2,185.24		3,212.71
550 Printing and Binding	207.08	181.25		388.33
580 Travel		89.32		89.32
<b>Total Other Purchased Services</b>	<b>\$1,234.55</b>	<b>\$2,455.81</b>		<b>\$3,690.36</b>
<b>600 Supplies</b>				
610 General Supplies	1,467.79	19,138.74		20,606.53
630 Food	3,296.66	3,597.12		6,893.78
640 Books and Periodicals	1,656.17	253.33		1,909.50
650 Supplies & Fees – Technology Related	22,956.60	13,352.84		36,309.44
<b>Total Supplies</b>	<b>\$29,377.22</b>	<b>\$36,342.03</b>		<b>\$65,719.25</b>
<b>700 Property</b>				
756 Capitalized Technology Equipment – Original		17,276.89		17,276.89
<b>Total Property</b>		<b>\$17,276.89</b>		<b>\$17,276.89</b>
<b>800 Other Objects</b>				
810 Dues and Fees	3,125.00	4,211.00		7,336.00
890 Miscellaneous Expenditures		200.00		200.00
<b>Total Other Objects</b>	<b>\$3,125.00</b>	<b>\$4,411.00</b>		<b>\$7,536.00</b>
<b>Total 2380 Office of the Principal Services</b>	<b>\$2,104,114.79</b>	<b>\$1,916,371.29</b>		<b>\$4,020,486.08</b>

General Fund (10)

2390 Other Administration Services

Elementary

Secondary

Federal

Total

100 Personnel Services – Salaries

100 Personnel Services – Salaries

1,313.43

**Total Personnel Services – Salaries**

**\$1,313.43**

200 Personnel Services – Employee Benefits

220 Social Security Contributions

90.66

230 PSERS Retirement Contributions

450.37

299 All Other Employee Benefits

525.00

**Total Personnel Services – Employee Benefits**

**\$1,066.03**

600 Supplies

610 General Supplies

7,191.16

630 Food

363.10

**Total Supplies**

**\$7,554.26**

**Total 2390 Other Administration Services**

**\$9,933.72**

**General Fund (10)**

	<u>Elementary</u>	<u>Secondary</u>	<u>Federal</u>	<u>Total</u>
<b>2400 Support Services – Pupil Health</b>				
<b>100 Personnel Services – Salaries</b>				
100 Personnel Services – Salaries				661,122.99
<b>Total Personnel Services – Salaries</b>				<b>\$661,122.99</b>
<b>200 Personnel Services – Employee Benefits</b>				
210 Group Insurance – Contracted Provider				1,882.88
220 Social Security Contributions				49,701.83
230 PSERS Retirement Contributions				226,981.00
250 Unemployment Compensation				14.08
260 Workers' Compensation				4,271.51
270 Group Insurance – Self-Insurance				129,052.10
292 Health Savings Accounts				7,000.00
299 All Other Employee Benefits				1,000.00
<b>Total Personnel Services – Employee Benefits</b>				<b>\$419,903.40</b>
<b>300 Purchased Professional and Technical Services</b>				
322 Professional Educational Services – Ius				15,339.45
330 Other Professional Services				132,349.28
390 Other Purchased Professional and Technical Services				81,366.91
<b>Total Purchased Professional and Technical Services</b>				<b>\$229,055.64</b>
<b>400 Purchased Property Services</b>				
430 Repairs and Maintenance Services				193.80
<b>Total Purchased Property Services</b>				<b>\$193.80</b>
<b>500 Other Purchased Services</b>				
580 Travel				576.66
<b>Total Other Purchased Services</b>				<b>\$576.66</b>
<b>600 Supplies</b>				
610 General Supplies				22,192.93
<b>Total Supplies</b>				<b>\$22,192.93</b>
<b>Total 2400 Support Services – Pupil Health</b>				<b>\$1,333,045.42</b>



General Fund (10)

2440 Nursing Services

Elementary                      Secondary                      Federal                      Total

<b>100 Personnel Services – Salaries</b>				
100 Personnel Services – Salaries				593,091.99
<b>Total Personnel Services – Salaries</b>				<b>\$593,091.99</b>
<b>200 Personnel Services – Employee Benefits</b>				
210 Group Insurance – Contracted Provider				1,674.48
220 Social Security Contributions				44,535.03
230 PSERS Retirement Contributions				203,781.69
250 Unemployment Compensation				14.08
260 Workers' Compensation				3,888.17
270 Group Insurance – Self-Insurance				120,732.68
292 Health Savings Accounts				7,000.00
299 All Other Employee Benefits				1,000.00
<b>Total Personnel Services – Employee Benefits</b>				<b>\$382,626.13</b>
<b>300 Purchased Professional and Technical Services</b>				
330 Other Professional Services				2,377.13
390 Other Purchased Professional and Technical Services				81,366.91
<b>Total Purchased Professional and Technical Services</b>				<b>\$83,744.04</b>
<b>400 Purchased Property Services</b>				
430 Repairs and Maintenance Services				193.80
<b>Total Purchased Property Services</b>				<b>\$193.80</b>
<b>500 Other Purchased Services</b>				
580 Travel				576.66
<b>Total Other Purchased Services</b>				<b>\$576.66</b>
<b>600 Supplies</b>				
610 General Supplies				17,998.65
<b>Total Supplies</b>				<b>\$17,998.65</b>
<b>Total 2440 Nursing Services</b>				<b>\$1,078,231.27</b>







General Fund (10)

2511 Supervision of Fiscal Services - Head of Component

Elementary

Secondary

Federal

Total

100 Personnel Services – Salaries

100 Personnel Services – Salaries

85,081.84

**Total Personnel Services – Salaries**

**\$85,081.84**

200 Personnel Services – Employee Benefits

210 Group Insurance – Contracted Provider

282.49

220 Social Security Contributions

6,913.21

230 PSERS Retirement Contributions

28,137.79

250 Unemployment Compensation

7,967.76

260 Workers' Compensation

2,573.86

270 Group Insurance – Self-Insurance

12,044.84

292 Health Savings Accounts

40.00

299 All Other Employee Benefits

460.00

**Total Personnel Services – Employee Benefits**

**\$58,419.95**

500 Other Purchased Services

580 Travel

1,922.80

**Total Other Purchased Services**

**\$1,922.80**

800 Other Objects

810 Dues and Fees

580.00

**Total Other Objects**

**\$580.00**

**Total 2511 Supervision of Fiscal Services - Head of Component**

**\$146,004.59**

General Fund (10)

2513 Receiving and Disbursing Funds Services

Elementary

Secondary

Federal

Total

100 Personnel Services – Salaries

100 Personnel Services – Salaries

10,797.81

**Total Personnel Services – Salaries**

**\$10,797.81**

200 Personnel Services – Employee Benefits

210 Group Insurance – Contracted Provider

5.34

220 Social Security Contributions

821.99

230 PSERS Retirement Contributions

3,702.63

270 Group Insurance – Self-Insurance

23.38

**Total Personnel Services – Employee Benefits**

**\$4,553.34**

**Total 2513 Receiving and Disbursing Funds Services**

**\$15,351.15**

General Fund (10)

2514 Payroll Services

Elementary

Secondary

Federal

Total

100 Personnel Services – Salaries

100 Personnel Services – Salaries

82,948.30

**Total Personnel Services – Salaries**

**\$82,948.30**

200 Personnel Services – Employee Benefits

210 Group Insurance – Contracted Provider

340.43

220 Social Security Contributions

6,175.74

230 PSERS Retirement Contributions

28,442.98

270 Group Insurance – Self-Insurance

22,024.62

292 Health Savings Accounts

3,000.00

**Total Personnel Services – Employee Benefits**

**\$59,983.77**

**Total 2514 Payroll Services**

**\$142,932.07**

**General Fund (10)**

	<u>Elementary</u>	<u>Secondary</u>	<u>Federal</u>	<u>Total</u>
<b>2515 Financial Accounting Services</b>				
<b>100 Personnel Services – Salaries</b>				
100 Personnel Services – Salaries				96,984.75
<b>Total Personnel Services – Salaries</b>				<b>\$96,984.75</b>
<b>200 Personnel Services – Employee Benefits</b>				
210 Group Insurance – Contracted Provider				349.95
220 Social Security Contributions				7,258.72
230 PSERS Retirement Contributions				33,256.21
270 Group Insurance – Self-Insurance				28,033.01
292 Health Savings Accounts				3,000.00
299 All Other Employee Benefits				731.37
<b>Total Personnel Services – Employee Benefits</b>				<b>\$72,629.26</b>
<b>400 Purchased Property Services</b>				
430 Repairs and Maintenance Services				357.52
<b>Total Purchased Property Services</b>				<b>\$357.52</b>
<b>500 Other Purchased Services</b>				
550 Printing and Binding				73.00
<b>Total Other Purchased Services</b>				<b>\$73.00</b>
<b>600 Supplies</b>				
610 General Supplies				1,905.78
650 Supplies & Fees – Technology Related				61,545.09
<b>Total Supplies</b>				<b>\$63,450.87</b>
<b>Total 2515 Financial Accounting Services</b>				<b>\$233,495.40</b>

General Fund (10)

2519 Other Fiscal Services

Elementary

Secondary

Federal

Total

300 Purchased Professional and Technical Services

390 Other Purchased Professional and Technical Services

18,939.41

**Total Purchased Professional and Technical Services**

**\$18,939.41**

500 Other Purchased Services

530 Communications

6,109.72

**Total Other Purchased Services**

**\$6,109.72**

800 Other Objects

810 Dues and Fees

17,494.45

**Total Other Objects**

**\$17,494.45**

**Total 2519 Other Fiscal Services**

**\$42,543.58**

General Fund (10)

2520 Purchasing Services

Elementary

Secondary

Federal

Total

100 Personnel Services – Salaries

100 Personnel Services – Salaries

48,162.94

**Total Personnel Services – Salaries**

**\$48,162.94**

200 Personnel Services – Employee Benefits

210 Group Insurance – Contracted Provider

132.36

220 Social Security Contributions

3,569.29

230 PSERS Retirement Contributions

16,515.08

270 Group Insurance – Self-Insurance

11,948.14

292 Health Savings Accounts

2,000.00

**Total Personnel Services – Employee Benefits**

**\$34,164.87**

600 Supplies

610 General Supplies

222.92

**Total Supplies**

**\$222.92**

**Total 2520 Purchasing Services**

**\$82,550.73**



General Fund (10)

2530 Warehousing and Distributing Services

Elementary

Secondary

Federal

Total

100 Personnel Services – Salaries

100 Personnel Services – Salaries

24,382.92

**Total Personnel Services – Salaries**

**\$24,382.92**

200 Personnel Services – Employee Benefits

220 Social Security Contributions

1,865.29

230 PSERS Retirement Contributions

8,360.90

260 Workers' Compensation

164.29

**Total Personnel Services – Employee Benefits**

**\$10,390.48**

300 Purchased Professional and Technical Services

390 Other Purchased Professional and Technical Services

543.66

**Total Purchased Professional and Technical Services**

**\$543.66**

500 Other Purchased Services

580 Travel

400.09

**Total Other Purchased Services**

**\$400.09**

**Total 2530 Warehousing and Distributing Services**

**\$35,717.15**

General Fund (10)

2540 Printing, Publishing and Duplicating Services

Elementary

Secondary

Federal

Total

300 Purchased Professional and Technical Services

390 Other Purchased Professional and Technical Services

14,689.35

**Total Purchased Professional and Technical Services**

**\$14,689.35**

**Total 2540 Printing, Publishing and Duplicating Services**

**\$14,689.35**

General Fund (10)

2590 Other Support Services – Business

Elementary

Secondary

Federal

Total

100 Personnel Services – Salaries

100 Personnel Services – Salaries

32,681.15

**Total Personnel Services – Salaries**

**\$32,681.15**

200 Personnel Services – Employee Benefits

210 Group Insurance – Contracted Provider

10.52

220 Social Security Contributions

2,493.25

230 PSERS Retirement Contributions

11,206.42

270 Group Insurance – Self-Insurance

738.00

292 Health Savings Accounts

300.00

**Total Personnel Services – Employee Benefits**

**\$14,748.19**

**Total 2590 Other Support Services – Business**

**\$47,429.34**



General Fund (10)

2600 Operation and Maintenance of Plant Services

Elementary

Secondary

Federal

Total

700 Property

752 Capital Equipment – Original and Additional

161,333.34

758 Capitalized Technology Software - Original

102,175.01

**Total Property**

**\$263,508.35**

800 Other Objects

810 Dues and Fees

239.50

**Total Other Objects**

**\$239.50**

**Total 2600 Operation and Maintenance of Plant Services**

**\$407,864.29**

**\$271,254.48**

**\$8,604,287.25**

General Fund (10)

2610 Supervision of Operation and Maintenance of Plant Services

Elementary

Secondary

Federal

Total

100 Personnel Services – Salaries

100 Personnel Services – Salaries

230,755.84

**Total Personnel Services – Salaries**

**\$230,755.84**

200 Personnel Services – Employee Benefits

210 Group Insurance – Contracted Provider

681.77

220 Social Security Contributions

17,647.45

230 PSERS Retirement Contributions

79,126.15

260 Workers' Compensation

1,423.84

270 Group Insurance – Self-Insurance

36,043.44

292 Health Savings Accounts

5,000.00

299 All Other Employee Benefits

1,000.00

**Total Personnel Services – Employee Benefits**

**\$140,922.65**

**Total 2610 Supervision of Operation and Maintenance of Plant Services**

**\$371,678.49**

General Fund (10)

2611 Supervision of Operation and Maintenance of Plant Services – Head of Component

Elementary

Secondary

Federal

Total

100 Personnel Services – Salaries

100 Personnel Services – Salaries

162,132.09

**Total Personnel Services – Salaries**

**\$162,132.09**

200 Personnel Services – Employee Benefits

210 Group Insurance – Contracted Provider

362.29

220 Social Security Contributions

12,415.72

230 PSERS Retirement Contributions

55,595.15

260 Workers' Compensation

985.74

270 Group Insurance – Self-Insurance

21,360.30

292 Health Savings Accounts

3,000.00

**Total Personnel Services – Employee Benefits**

**\$93,719.20**

**Total 2611 Supervision of Operation and Maintenance of Plant Services – Head of Component**

**\$255,851.29**

General Fund (10)

2619 Supervision of Operation and Maintenance of Plant Services – All Other Supervision

Elementary

Secondary

Federal

Total

100 Personnel Services – Salaries

100 Personnel Services – Salaries

68,623.75

**Total Personnel Services – Salaries**

**\$68,623.75**

200 Personnel Services – Employee Benefits

210 Group Insurance – Contracted Provider

319.48

220 Social Security Contributions

5,231.73

230 PSERS Retirement Contributions

23,531.00

260 Workers' Compensation

438.10

270 Group Insurance – Self-Insurance

14,683.14

292 Health Savings Accounts

2,000.00

299 All Other Employee Benefits

1,000.00

**Total Personnel Services – Employee Benefits**

**\$47,203.45**

**Total 2619 Supervision of Operation and Maintenance of Plant Services – All Other Supervision**

**\$115,827.20**



**General Fund (10)**

	<u>Elementary</u>	<u>Secondary</u>	<u>Federal</u>	<u>Total</u>
<b>2620 Operation of Buildings Services</b>				
<b>100 Personnel Services – Salaries</b>				
100 Personnel Services – Salaries				1,634,822.20
<b>Total Personnel Services – Salaries</b>				<b>\$1,634,822.20</b>
<b>200 Personnel Services – Employee Benefits</b>				
210 Group Insurance – Contracted Provider				4,992.83
220 Social Security Contributions				122,203.83
230 PSERS Retirement Contributions				549,406.57
250 Unemployment Compensation				3,802.86
260 Workers' Compensation				9,309.73
270 Group Insurance – Self-Insurance				562,374.02
292 Health Savings Accounts				39,000.00
299 All Other Employee Benefits				358.90
<b>Total Personnel Services – Employee Benefits</b>				<b>\$1,291,448.74</b>
<b>300 Purchased Professional and Technical Services</b>				
330 Other Professional Services				4,374.00
340 Technical Services				10,476.80
350 Security / Safety Services				11,184.00
<b>Total Purchased Professional and Technical Services</b>				<b>\$26,034.80</b>
<b>400 Purchased Property Services</b>				
410 Cleaning Services				131,910.29
420 Utility Services				96,977.17
430 Repairs and Maintenance Services				1,085,224.81
440 Rentals				4,418.35
450 Construction Services				12,147.73
460 Extermination Services				6,382.52
490 Other Purchased Property Services				100.00
<b>Total Purchased Property Services</b>				<b>\$1,337,160.87</b>
<b>500 Other Purchased Services</b>				
523 General Property and Liability Insurance				358,514.87
530 Communications				102,425.49
549 Other Advertising/Public Relations				1,050.94
<b>Total Other Purchased Services</b>				<b>\$461,991.30</b>
<b>600 Supplies</b>				
610 General Supplies	388,047.96	232,192.91		620,240.87
620 Energy				1,329,563.54
630 Food				565.00
650 Supplies & Fees – Technology Related				5,069.28
<b>Total Supplies</b>				<b>\$1,955,438.69</b>
<b>700 Property</b>				
752 Capital Equipment – Original and Additional				84,975.33
758 Capitalized Technology Software - Original				102,175.01
<b>Total Property</b>				<b>\$187,150.34</b>

LEA : 113364503 Manheim Township SD

Printed 10/30/2020 2:43:30 PM

General Fund (10)

2620 Operation of Buildings Services

Elementary

Secondary

Federal

Total

800 Other Objects

810 Dues and Fees

10.00

**Total Other Objects**

**\$10.00**

**Total 2620 Operation of Buildings Services**

**\$388,047.96**

**\$232,192.91**

**\$6,894,056.94**

General Fund (10)

2630 Care and Upkeep of Grounds Services

Elementary

Secondary

Federal

Total

400 Purchased Property Services

410 Cleaning Services

379,555.75

430 Repairs and Maintenance Services

45,221.38

440 Rentals

3,678.58

**Total Purchased Property Services**

**\$428,455.71**

600 Supplies

610 General Supplies

5,518.94

10,471.92

15,990.86

**Total Supplies**

**\$5,518.94**

**\$10,471.92**

**\$15,990.86**

**Total 2630 Care and Upkeep of Grounds Services**

**\$5,518.94**

**\$10,471.92**

**\$444,446.57**

General Fund (10)

	<u>Elementary</u>	<u>Secondary</u>	<u>Federal</u>	<u>Total</u>
<b>2640 Care and Upkeep of Equipment Services</b>				
<b>400 <u>Purchased Property Services</u></b>				
430 Repairs and Maintenance Services				38,698.82
<b>Total Purchased Property Services</b>				<b>\$38,698.82</b>
<b>600 <u>Supplies</u></b>				
610 General Supplies	7,987.48	4,070.92		12,058.40
<b>Total Supplies</b>	<b>\$7,987.48</b>	<b>\$4,070.92</b>		<b>\$12,058.40</b>
<b>Total 2640 Care and Upkeep of Equipment Services</b>	<b>\$7,987.48</b>	<b>\$4,070.92</b>		<b>\$50,757.22</b>

General Fund (10)

	<u>Elementary</u>	<u>Secondary</u>	<u>Federal</u>	<u>Total</u>
<b>2650 Vehicle Operation and Maintenance Services (Other Than Student Transportation Vehicles)</b>				
<b>400 Purchased Property Services</b>				
430 Repairs and Maintenance Services				15,619.68
<b>Total Purchased Property Services</b>				<b>\$15,619.68</b>
<b>600 Supplies</b>				
610 General Supplies	376.27	333.68		709.95
620 Energy				7,318.48
<b>Total Supplies</b>	<b>\$376.27</b>	<b>\$333.68</b>		<b>\$8,028.43</b>
<b>Total 2650 Vehicle Operation and Maintenance Services (Other Than Student Transportation Vehicles)</b>	<b>\$376.27</b>	<b>\$333.68</b>		<b>\$23,648.11</b>

**General Fund (10)**

**2660 Safety and Security Services**

**100 Personnel Services – Salaries**

100 Personnel Services – Salaries				288,857.51
-----------------------------------	--	--	--	------------

<b>Total Personnel Services – Salaries</b>				<b>\$288,857.51</b>
--	--	--	--	---------------------

**200 Personnel Services – Employee Benefits**

210 Group Insurance – Contracted Provider				653.70
---	--	--	--	--------

220 Social Security Contributions				21,888.79
-----------------------------------	--	--	--	-----------

230 PSERS Retirement Contributions				89,895.56
------------------------------------	--	--	--	-----------

260 Workers' Compensation				1,588.13
---------------------------	--	--	--	----------

270 Group Insurance – Self-Insurance				53,588.16
--------------------------------------	--	--	--	-----------

292 Health Savings Accounts				3,500.00
-----------------------------	--	--	--	----------

299 All Other Employee Benefits				1,249.98
---------------------------------	--	--	--	----------

<b>Total Personnel Services – Employee Benefits</b>				<b>\$172,364.32</b>
---	--	--	--	---------------------

**300 Purchased Professional and Technical Services**

350 Security / Safety Services				238,271.50
--------------------------------	--	--	--	------------

390 Other Purchased Professional and Technical Services				5,159.86
---	--	--	--	----------

<b>Total Purchased Professional and Technical Services</b>				<b>\$243,431.36</b>
--	--	--	--	---------------------

**400 Purchased Property Services**

430 Repairs and Maintenance Services				4,774.94
--------------------------------------	--	--	--	----------

<b>Total Purchased Property Services</b>				<b>\$4,774.94</b>
--	--	--	--	-------------------

**500 Other Purchased Services**

550 Printing and Binding				36.50
--------------------------	--	--	--	-------

580 Travel				956.14
------------	--	--	--	--------

<b>Total Other Purchased Services</b>				<b>\$992.64</b>
---------------------------------------	--	--	--	-----------------

**600 Supplies**

610 General Supplies	5,933.64	24,185.05		30,118.69
----------------------	----------	-----------	--	-----------

640 Books and Periodicals				313.95
---------------------------	--	--	--	--------

650 Supplies & Fees – Technology Related				2,259.00
--	--	--	--	----------

<b>Total Supplies</b>				<b>\$32,691.64</b>
-----------------------	--	--	--	--------------------

**700 Property**

752 Capital Equipment – Original and Additional				76,358.01
---	--	--	--	-----------

<b>Total Property</b>				<b>\$76,358.01</b>
-----------------------	--	--	--	--------------------

**800 Other Objects**

810 Dues and Fees				229.50
-------------------	--	--	--	--------

<b>Total Other Objects</b>				<b>\$229.50</b>
----------------------------	--	--	--	-----------------

<b>Total 2660 Safety and Security Services</b>				<b>\$819,699.92</b>
--	--	--	--	---------------------

**General Fund (10)**

**2700 Student Transportation Services**

Elementary                      Secondary                      Federal                      Total

<b>100</b>	<b><u>Personnel Services – Salaries</u></b>			
	100 Personnel Services – Salaries			100,999.08
<b>Total Personnel Services – Salaries</b>				<b>\$100,999.08</b>
<b>200</b>	<b><u>Personnel Services – Employee Benefits</u></b>			
	210 Group Insurance – Contracted Provider			260.53
	220 Social Security Contributions			7,751.53
	230 PSERS Retirement Contributions			34,632.69
	260 Workers' Compensation			711.92
	270 Group Insurance – Self-Insurance			11,059.38
	292 Health Savings Accounts			1,600.00
	299 All Other Employee Benefits			1,000.00
<b>Total Personnel Services – Employee Benefits</b>				<b>\$57,016.05</b>
<b>300</b>	<b><u>Purchased Professional and Technical Services</u></b>			
	390 Other Purchased Professional and Technical Services			2,082.02
<b>Total Purchased Professional and Technical Services</b>				<b>\$2,082.02</b>
<b>400</b>	<b><u>Purchased Property Services</u></b>			
	430 Repairs and Maintenance Services			4,101.80
	440 Rentals			37,028.82
<b>Total Purchased Property Services</b>				<b>\$41,130.62</b>
<b>500</b>	<b><u>Other Purchased Services</u></b>			
	513 Contracted Carriers			2,817,794.07
	516 Student Transportation Services From the IU			111,291.87
	530 Communications			3,406.03
	580 Travel			234.96
<b>Total Other Purchased Services</b>				<b>\$2,932,726.93</b>
<b>600</b>	<b><u>Supplies</u></b>			
	610 General Supplies			3,701.18
	620 Energy			6,684.58
	630 Food			394.25
	640 Books and Periodicals			197.00
	650 Supplies & Fees – Technology Related			26,266.11
<b>Total Supplies</b>				<b>\$37,243.12</b>
<b>800</b>	<b><u>Other Objects</u></b>			
	810 Dues and Fees			1,391.40
<b>Total Other Objects</b>				<b>\$1,391.40</b>
<b>Total 2700 Student Transportation Services</b>				<b>\$3,172,589.22</b>





General Fund (10)

2711 Supervision of Student Transportation Services – Head of Component

Elementary                      Secondary                      Federal                      Total

<b>100 Personnel Services – Salaries</b>				
100 Personnel Services – Salaries				88,965.70
<b>Total Personnel Services – Salaries</b>				<b>\$88,965.70</b>
<b>200 Personnel Services – Employee Benefits</b>				
210 Group Insurance – Contracted Provider				244.87
220 Social Security Contributions				6,835.19
230 PSERS Retirement Contributions				30,506.56
260 Workers' Compensation				602.39
270 Group Insurance – Self-Insurance				9,705.99
292 Health Savings Accounts				1,450.00
299 All Other Employee Benefits				1,000.00
<b>Total Personnel Services – Employee Benefits</b>				<b>\$50,345.00</b>
<b>300 Purchased Professional and Technical Services</b>				
390 Other Purchased Professional and Technical Services				2,082.02
<b>Total Purchased Professional and Technical Services</b>				<b>\$2,082.02</b>
<b>400 Purchased Property Services</b>				
430 Repairs and Maintenance Services				99.48
<b>Total Purchased Property Services</b>				<b>\$99.48</b>
<b>500 Other Purchased Services</b>				
530 Communications				3,406.03
580 Travel				234.96
<b>Total Other Purchased Services</b>				<b>\$3,640.99</b>
<b>600 Supplies</b>				
610 General Supplies				1,262.70
630 Food				394.25
640 Books and Periodicals				197.00
<b>Total Supplies</b>				<b>\$1,853.95</b>
<b>800 Other Objects</b>				
810 Dues and Fees				153.90
<b>Total Other Objects</b>				<b>\$153.90</b>
<b>Total 2711 Supervision of Student Transportation Services – Head of Component</b>				<b>\$147,141.04</b>

General Fund (10)

2720 Vehicle Operation Services

Elementary

Secondary

Federal

Total

400 Purchased Property Services

430 Repairs and Maintenance Services

1,005.70

440 Rentals

37,028.82

**Total Purchased Property Services**

**\$38,034.52**

500 Other Purchased Services

513 Contracted Carriers

2,680,323.93

516 Student Transportation Services From the IU

111,291.87

**Total Other Purchased Services**

**\$2,791,615.80**

600 Supplies

610 General Supplies

2,438.48

620 Energy

3,376.01

650 Supplies & Fees – Technology Related

26,266.11

**Total Supplies**

**\$32,080.60**

800 Other Objects

810 Dues and Fees

1,237.50

**Total Other Objects**

**\$1,237.50**

**Total 2720 Vehicle Operation Services**

**\$2,862,968.42**

General Fund (10)

2740 Vehicle Servicing and Maintenance Services

Elementary

Secondary

Federal

Total

400 Purchased Property Services

430 Repairs and Maintenance Services

2,996.62

**Total Purchased Property Services**

**\$2,996.62**

600 Supplies

620 Energy

3,308.57

**Total Supplies**

**\$3,308.57**

**Total 2740 Vehicle Servicing and Maintenance Services**

**\$6,305.19**

General Fund (10)

2750 Nonpublic Transportation

Elementary

Secondary

Federal

Total

100 Personnel Services – Salaries

100 Personnel Services – Salaries

12,033.38

**Total Personnel Services – Salaries**

**\$12,033.38**

200 Personnel Services – Employee Benefits

210 Group Insurance – Contracted Provider

15.66

220 Social Security Contributions

916.34

230 PSERS Retirement Contributions

4,126.13

260 Workers' Compensation

109.53

270 Group Insurance – Self-Insurance

1,353.39

292 Health Savings Accounts

150.00

**Total Personnel Services – Employee Benefits**

**\$6,671.05**

500 Other Purchased Services

513 Contracted Carriers

137,470.14

**Total Other Purchased Services**

**\$137,470.14**

**Total 2750 Nonpublic Transportation**

**\$156,174.57**

General Fund (10)

2800 Support Services – Central

Elementary                      Secondary                      Federal                      Total

100 Personnel Services – Salaries

100 Personnel Services – Salaries 376,068.87

**Total Personnel Services – Salaries \$376,068.87**

200 Personnel Services – Employee Benefits

210 Group Insurance – Contracted Provider 1,096.38

220 Social Security Contributions 28,704.77

230 PSERS Retirement Contributions 128,441.25

240 Tuition Reimbursement 59,223.00

260 Workers' Compensation 2,464.35

270 Group Insurance – Self-Insurance 56,208.86

292 Health Savings Accounts 5,989.00

299 All Other Employee Benefits 2,815.70

**Total Personnel Services – Employee Benefits \$284,943.31**

300 Purchased Professional and Technical Services

360 Employee Training and Development Services 31,658.75

390 Other Purchased Professional and Technical Services 21,481.56

**Total Purchased Professional and Technical Services \$53,140.31**

400 Purchased Property Services

430 Repairs and Maintenance Services 465.72

**Total Purchased Property Services \$465.72**

500 Other Purchased Services

530 Communications 3,291.70

549 Other Advertising/Public Relations 17,384.73

550 Printing and Binding 4,372.33

580 Travel 7,393.73

**Total Other Purchased Services \$32,442.49**

600 Supplies

610 General Supplies 5,297.58

630 Food 6,151.76

640 Books and Periodicals 182.97

650 Supplies & Fees – Technology Related 76,190.58

**Total Supplies \$87,822.89**

800 Other Objects

810 Dues and Fees 3,547.50

**Total Other Objects \$3,547.50**

**Total 2800 Support Services – Central \$838,431.09**

General Fund (10)

2810 Planning, Research, Development and Evaluation Services

Elementary

Secondary

Federal

Total

100 Personnel Services – Salaries

100 Personnel Services – Salaries

22,019.45

**Total Personnel Services – Salaries**

**\$22,019.45**

200 Personnel Services – Employee Benefits

210 Group Insurance – Contracted Provider

66.12

220 Social Security Contributions

1,701.22

230 PSERS Retirement Contributions

7,550.42

260 Workers' Compensation

109.53

270 Group Insurance – Self-Insurance

9,262.44

**Total Personnel Services – Employee Benefits**

**\$18,689.73**

500 Other Purchased Services

550 Printing and Binding

35.25

**Total Other Purchased Services**

**\$35.25**

600 Supplies

610 General Supplies

3,027.20

650 Supplies & Fees – Technology Related

2,520.00

**Total Supplies**

**\$5,547.20**

**Total 2810 Planning, Research, Development and Evaluation Services**

**\$46,291.63**



General Fund (10)

2821 Supervision of Information Services

Elementary

Secondary

Federal

Total

100 Personnel Services – Salaries

100 Personnel Services – Salaries 36,742.40

**Total Personnel Services – Salaries \$36,742.40**

200 Personnel Services – Employee Benefits

210 Group Insurance – Contracted Provider 165.54

220 Social Security Contributions 2,800.72

230 PSERS Retirement Contributions 12,599.06

270 Group Insurance – Self-Insurance 7,821.60

292 Health Savings Accounts 989.00

299 All Other Employee Benefits 15.00

**Total Personnel Services – Employee Benefits \$24,390.92**

300 Purchased Professional and Technical Services

390 Other Purchased Professional and Technical Services 3,300.00

**Total Purchased Professional and Technical Services \$3,300.00**

500 Other Purchased Services

530 Communications 2,159.00

549 Other Advertising/Public Relations 17,384.73

550 Printing and Binding 4,271.00

580 Travel 65.83

**Total Other Purchased Services \$23,880.56**

600 Supplies

610 General Supplies 172.20

**Total Supplies \$172.20**

**Total 2821 Supervision of Information Services \$88,486.08**



**General Fund (10)**

**2830 Staff Services**

Elementary                      Secondary                      Federal                      Total

<b>100</b>	<b><u>Personnel Services – Salaries</u></b>				
	100 Personnel Services – Salaries				287,736.71
<b>Total Personnel Services – Salaries</b>					<b>\$287,736.71</b>
<b>200</b>	<b><u>Personnel Services – Employee Benefits</u></b>				
	210 Group Insurance – Contracted Provider				759.03
	220 Social Security Contributions				21,909.10
	230 PSERS Retirement Contributions				98,152.04
	240 Tuition Reimbursement				59,223.00
	260 Workers' Compensation				2,026.24
	270 Group Insurance – Self-Insurance				33,060.80
	292 Health Savings Accounts				5,000.00
	299 All Other Employee Benefits				2,710.70
<b>Total Personnel Services – Employee Benefits</b>					<b>\$222,840.91</b>
<b>300</b>	<b><u>Purchased Professional and Technical Services</u></b>				
	360 Employee Training and Development Services				31,658.75
	390 Other Purchased Professional and Technical Services				18,181.56
<b>Total Purchased Professional and Technical Services</b>					<b>\$49,840.31</b>
<b>400</b>	<b><u>Purchased Property Services</u></b>				
	430 Repairs and Maintenance Services				465.72
<b>Total Purchased Property Services</b>					<b>\$465.72</b>
<b>500</b>	<b><u>Other Purchased Services</u></b>				
	530 Communications				1,132.70
	550 Printing and Binding				66.08
	580 Travel				7,327.90
<b>Total Other Purchased Services</b>					<b>\$8,526.68</b>
<b>600</b>	<b><u>Supplies</u></b>				
	610 General Supplies				2,098.18
	630 Food				6,151.76
	640 Books and Periodicals				182.97
	650 Supplies & Fees – Technology Related				73,670.58
<b>Total Supplies</b>					<b>\$82,103.49</b>
<b>800</b>	<b><u>Other Objects</u></b>				
	810 Dues and Fees				3,547.50
<b>Total Other Objects</b>					<b>\$3,547.50</b>
<b>Total 2830 Staff Services</b>					<b>\$655,061.32</b>

General Fund (10)

2831 Supervision of Staff Services

Elementary

Secondary

Federal

Total

100 Personnel Services – Salaries

100 Personnel Services – Salaries

153,003.16

**Total Personnel Services – Salaries**

**\$153,003.16**

200 Personnel Services – Employee Benefits

210 Group Insurance – Contracted Provider

368.37

220 Social Security Contributions

11,661.39

230 PSERS Retirement Contributions

52,422.87

260 Workers' Compensation

821.45

270 Group Insurance – Self-Insurance

7,438.34

292 Health Savings Accounts

1,000.00

299 All Other Employee Benefits

1,880.00

**Total Personnel Services – Employee Benefits**

**\$75,592.42**

**Total 2831 Supervision of Staff Services**

**\$228,595.58**

General Fund (10)

2832 Recruitment and Placement Services

Elementary

Secondary

Federal

Total

100 Personnel Services – Salaries

100 Personnel Services – Salaries 69,406.71

**Total Personnel Services – Salaries \$69,406.71**

200 Personnel Services – Employee Benefits

210 Group Insurance – Contracted Provider 258.30

220 Social Security Contributions 5,290.63

230 PSERS Retirement Contributions 23,328.57

260 Workers' Compensation 1,204.79

270 Group Insurance – Self-Insurance 18,293.22

292 Health Savings Accounts 3,000.00

299 All Other Employee Benefits 830.70

**Total Personnel Services – Employee Benefits \$52,206.21**

300 Purchased Professional and Technical Services

390 Other Purchased Professional and Technical Services 18,181.56

**Total Purchased Professional and Technical Services \$18,181.56**

400 Purchased Property Services

430 Repairs and Maintenance Services 465.72

**Total Purchased Property Services \$465.72**

500 Other Purchased Services

530 Communications 1,132.70

550 Printing and Binding 66.08

580 Travel 216.60

**Total Other Purchased Services \$1,415.38**

600 Supplies

610 General Supplies 2,098.18

630 Food 92.56

650 Supplies & Fees – Technology Related 73,670.58

**Total Supplies \$75,861.32**

800 Other Objects

810 Dues and Fees 1,764.50

**Total Other Objects \$1,764.50**

**Total 2832 Recruitment and Placement Services \$219,301.40**

General Fund (10)

2833 Staff Accounting Services

Elementary

Secondary

Federal

Total

100 Personnel Services – Salaries

100 Personnel Services – Salaries

25,438.16

**Total Personnel Services – Salaries**

**\$25,438.16**

200 Personnel Services – Employee Benefits

210 Group Insurance – Contracted Provider

66.13

220 Social Security Contributions

1,925.73

230 PSERS Retirement Contributions

8,722.72

270 Group Insurance – Self-Insurance

3,664.58

292 Health Savings Accounts

500.00

**Total Personnel Services – Employee Benefits**

**\$14,879.16**

**Total 2833 Staff Accounting Services**

**\$40,317.32**

**General Fund (10)**

2834 Staff Development Services – Non-Instructional, Certified Staff Only	<u>Elementary</u>	<u>Secondary</u>	<u>Federal</u>	<u>Total</u>
<b>200 Personnel Services – Employee Benefits</b>				
240 Tuition Reimbursement				48,339.00
<b>Total Personnel Services – Employee Benefits</b>				<b>\$48,339.00</b>
<b>300 Purchased Professional and Technical Services</b>				
360 Employee Training and Development Services				17,315.54
<b>Total Purchased Professional and Technical Services</b>				<b>\$17,315.54</b>
<b>500 Other Purchased Services</b>				
580 Travel				5,130.53
<b>Total Other Purchased Services</b>				<b>\$5,130.53</b>
<b>600 Supplies</b>				
630 Food				2,165.62
640 Books and Periodicals				182.97
<b>Total Supplies</b>				<b>\$2,348.59</b>
<b>800 Other Objects</b>				
810 Dues and Fees				1,783.00
<b>Total Other Objects</b>				<b>\$1,783.00</b>
<b>Total 2834 Staff Development Services – Non-Instructional, Certified Staff Only</b>				<b>\$74,916.66</b>

General Fund (10)

2835 Health Services

Elementary

Secondary

Federal

Total

100 Personnel Services – Salaries

100 Personnel Services – Salaries

25,438.24

**Total Personnel Services – Salaries**

**\$25,438.24**

200 Personnel Services – Employee Benefits

210 Group Insurance – Contracted Provider

66.23

220 Social Security Contributions

1,925.91

230 PSERS Retirement Contributions

8,722.83

270 Group Insurance – Self-Insurance

3,664.66

292 Health Savings Accounts

500.00

**Total Personnel Services – Employee Benefits**

**\$14,879.63**

**Total 2835 Health Services**

**\$40,317.87**

General Fund (10)

2836 Staff Development Services – Non-Instructional, Non-Certified Staff Only	<u>Elementary</u>	<u>Secondary</u>	<u>Federal</u>	<u>Total</u>
<b>100 Personnel Services – Salaries</b>				
100 Personnel Services – Salaries				14,450.44
<b>Total Personnel Services – Salaries</b>				<b>\$14,450.44</b>
<b>200 Personnel Services – Employee Benefits</b>				
220 Social Security Contributions				1,105.44
230 PSERS Retirement Contributions				4,955.05
240 Tuition Reimbursement				10,884.00
<b>Total Personnel Services – Employee Benefits</b>				<b>\$16,944.49</b>
<b>300 Purchased Professional and Technical Services</b>				
360 Employee Training and Development Services				14,343.21
<b>Total Purchased Professional and Technical Services</b>				<b>\$14,343.21</b>
<b>500 Other Purchased Services</b>				
580 Travel				1,980.77
<b>Total Other Purchased Services</b>				<b>\$1,980.77</b>
<b>600 Supplies</b>				
630 Food				721.88
<b>Total Supplies</b>				<b>\$721.88</b>
<b>Total 2836 Staff Development Services – Non-Instructional, Non-Certified Staff Only</b>				<b>\$48,440.79</b>

LEA : 113364503 Manheim Township SD

Printed 10/30/2020 2:43:30 PM

General Fund (10)

2839 Other Staff Services

Elementary

Secondary

Federal

Total

600 Supplies

630 Food

3,171.70

**Total Supplies**

**\$3,171.70**

**Total 2839 Other Staff Services**

**\$3,171.70**



General Fund (10)

2850 State and Federal Agency Liaison Services	<u>Elementary</u>	<u>Secondary</u>	<u>Federal</u>	<u>Total</u>
<b>100 Personnel Services – Salaries</b>				
100 Personnel Services – Salaries				29,570.31
<b>Total Personnel Services – Salaries</b>				<b>\$29,570.31</b>
<b>200 Personnel Services – Employee Benefits</b>				
210 Group Insurance – Contracted Provider				105.69
220 Social Security Contributions				2,293.73
230 PSERS Retirement Contributions				10,139.73
260 Workers' Compensation				328.58
270 Group Insurance – Self-Insurance				6,064.02
299 All Other Employee Benefits				90.00
<b>Total Personnel Services – Employee Benefits</b>				<b>\$19,021.75</b>
<b>Total 2850 State and Federal Agency Liaison Services</b>				<b>\$48,592.06</b>

General Fund (10)

2900 Other Support Services

Elementary

Secondary

Federal

Total

500 Other Purchased Services

595 IU Payments By Withholding

51,284.88

**Total Other Purchased Services**

**\$51,284.88**

800 Other Objects

890 Miscellaneous Expenditures

17,308.72

**Total Other Objects**

**\$17,308.72**

**Total 2900 Other Support Services**

**\$68,593.60**

General Fund (10)

2910 Support Services Not Listed Elsewhere In the 2000 Series

Elementary

Secondary

Federal

Total

500 Other Purchased Services

595 IU Payments By Withholding

51,284.88

**Total Other Purchased Services**

**\$51,284.88**

800 Other Objects

890 Miscellaneous Expenditures

17,308.72

**Total Other Objects**

**\$17,308.72**

**Total 2910 Support Services Not Listed Elsewhere In the 2000 Series**

**\$68,593.60**

General Fund (10)

3000 Operation of Non-Instructional Services

Total

100 Personnel Services – Salaries

100 Personnel Services – Salaries 733,751.63

Total Personnel Services – Salaries \$733,751.63

200 Personnel Services – Employee Benefits

210 Group Insurance – Contracted Provider 874.79

220 Social Security Contributions 55,611.61

230 PSERS Retirement Contributions 205,679.75

250 Unemployment Compensation 689.17

260 Workers' Compensation 4,600.09

270 Group Insurance – Self-Insurance 25,293.98

292 Health Savings Accounts 3,000.00

299 All Other Employee Benefits 1,338.74

Total Personnel Services – Employee Benefits \$297,088.13

300 Purchased Professional and Technical Services

330 Other Professional Services 12,503.50

350 Security / Safety Services 5,740.00

390 Other Purchased Professional and Technical Services 91,723.64

Total Purchased Professional and Technical Services \$109,967.14

400 Purchased Property Services

410 Cleaning Services 5,450.60

430 Repairs and Maintenance Services 15,498.39

440 Rentals 2,814.25

Total Purchased Property Services \$23,763.24

500 Other Purchased Services

510 Student Transportation Services 69,756.52

520 Insurance – General 12,890.00

530 Communications 306.06

580 Travel 8,131.49

Total Other Purchased Services \$91,084.07

600 Supplies

610 General Supplies 187,245.51

620 Energy 52.86

630 Food 6,144.65

640 Books and Periodicals 298.00

650 Supplies & Fees – Technology Related 11,523.00

Total Supplies \$205,264.02

700 Property

752 Capital Equipment – Original and Additional 81,077.76

Total Property \$81,077.76

800 Other Objects

810 Dues and Fees 34,726.95

LEA : 113364503 Manheim Township SD

Printed 10/30/2020 2:43:50 PM

**General Fund (10)**

**3000 Operation of Non-Instructional Services**

**Total**

**800 Other Objects**

890 Miscellaneous Expenditures

2,212.00

**Total Other Objects**

**\$36,938.95**

**Total 3000 Operation of Non-Instructional Services**

**\$1,578,934.94**



LEA : 113364503 Manheim Township SD

Printed 10/30/2020 2:43:50 PM

General Fund (10)

3200 Student Activities

Elementary

Secondary

Federal

Total

800 Other Objects

890 Miscellaneous Expenditures

2,212.00

**Total Other Objects**

**\$36,938.95**

**Total 3200 Student Activities**

**\$1,564,912.01**

General Fund (10)

3300 Community Services

Elementary

Secondary

Federal

Total

500 Other Purchased Services

530 Communications

187.00

187.00

**Total Other Purchased Services**

**\$187.00**

**\$187.00**

600 Supplies

610 General Supplies

3,841.34

9,550.23

630 Food

11.70

11.70

650 Supplies & Fees – Technology Related

4,274.00

4,274.00

**Total Supplies**

**\$8,127.04**

**\$13,835.93**

**Total 3300 Community Services**

**\$8,314.04**

**\$14,022.93**



**General Fund (10)**

<b>4000 Facilities Acquisition, Construction and Improvement Services</b>	<u><b>Total</b></u>
<b>300 <u>Purchased Professional and Technical Services</u></b>	
330 Other Professional Services	2,800.00
<b>Total Purchased Professional and Technical Services</b>	<b>\$2,800.00</b>
<b>400 <u>Purchased Property Services</u></b>	
450 Construction Services	37,138.50
<b>Total Purchased Property Services</b>	<b>\$37,138.50</b>
<b>Total 4000 Facilities Acquisition, Construction and Improvement Services</b>	<b>\$39,938.50</b>

LEA : 113364503 Manheim Township SD

Printed 10/30/2020 2:44:03 PM

General Fund (10)

4300 Architecture and Engineering Services / Educational Specifications Development – Original and Additional

Elementary

Secondary

Federal

Total

300 Purchased Professional and Technical Services

330 Other Professional Services

2,800.00

**Total Purchased Professional and Technical Services**

**\$2,800.00**

**Total 4300 Architecture and Engineering Services / Educational Specifications Development – Original and Additional**

**\$2,800.00**

General Fund (10)

	<u>Elementary</u>	<u>Secondary</u>	<u>Federal</u>	<u>Total</u>
<b>4500 Building Acquisition and Construction Services – Original and Additional</b>				
<b>400 <u>Purchased Property Services</u></b>				
450 Construction Services				37,138.50
<b>Total Purchased Property Services</b>				<b>\$37,138.50</b>
<b>Total 4500 Building Acquisition and Construction Services – Original and Additional</b>				<b>\$37,138.50</b>

**General Fund (10)**

**5000 Other Expenditures and Financing Uses**

**Total**

**800 Other Objects**

830 Interest	5,169,790.12
880 Refunds of Prior Years' Receipts	925.76

<b>Total Other Objects</b>	<b>\$5,170,715.88</b>
----------------------------	-----------------------

**900 Other Uses of Funds**

910 Redemption of Principal	9,775,735.08
932 Capital Reserve Fund Transfers Applicable To Fund 32	286,987.00

<b>Total Other Uses of Funds</b>	<b>\$10,062,722.08</b>
----------------------------------	------------------------

<b>Total 5000 Other Expenditures and Financing Uses</b>	<b>\$15,233,437.96</b>
---	------------------------

LEA : 113364503 Manheim Township SD

Printed 10/30/2020 2:44:21 PM

General Fund (10)

5100 Debt Service / Other Expenditures and Financing Uses	<u>Elementary</u>	<u>Secondary</u>	<u>Federal</u>	<u>Total</u>
<b>800 Other Objects</b>				
830 Interest				5,169,790.12
880 Refunds of Prior Years' Receipts				925.76
<b>Total Other Objects</b>				<b>\$5,170,715.88</b>
<b>900 Other Uses of Funds</b>				
910 Redemption of Principal				9,775,735.08
<b>Total Other Uses of Funds</b>				<b>\$9,775,735.08</b>
<b>Total 5100 Debt Service / Other Expenditures and Financing Uses</b>				<b>\$14,946,450.96</b>

General Fund (10)

	<u>Elementary</u>	<u>Secondary</u>	<u>Federal</u>	<u>Total</u>
<b>5110 Debt Service</b>				
<b>800 Other Objects</b>				
830 Interest				5,169,790.12
<b>Total Other Objects</b>				<b>\$5,169,790.12</b>
<b>900 Other Uses of Funds</b>				
910 Redemption of Principal				9,775,735.08
<b>Total Other Uses of Funds</b>				<b>\$9,775,735.08</b>
<b>Total 5110 Debt Service</b>				<b>\$14,945,525.20</b>

LEA : 113364503 Manheim Township SD

Printed 10/30/2020 2:44:21 PM

General Fund (10)

	<u>Elementary</u>	<u>Secondary</u>	<u>Federal</u>	<u>Total</u>
5130 Refund of Prior Year Revenues / Receipts				
800 <u>Other Objects</u>				
880 Refunds of Prior Years' Receipts				925.76
<b>Total Other Objects</b>				<b>\$925.76</b>
<b>Total 5130 Refund of Prior Year Revenues / Receipts</b>				<b>\$925.76</b>

LEA : 113364503 Manheim Township SD

Printed 10/30/2020 2:44:21 PM

General Fund (10)

5200 Interfund Transfers – Out

Elementary

Secondary

Federal

Total

900 Other Uses of Funds

932 Capital Reserve Fund Transfers Applicable To Fund 32

286,987.00

**Total Other Uses of Funds**

**\$286,987.00**

**Total 5200 Interfund Transfers – Out**

**\$286,987.00**



LEA : 113364503 Manheim Township SD

Printed 10/30/2020 2:44:21 PM

General Fund (10)

5230 Capital Projects Fund Transfers

Elementary

Secondary

Federal

Total

900 Other Uses of Funds

932 Capital Reserve Fund Transfers Applicable To Fund 32

286,987.00

**Total Other Uses of Funds**

**\$286,987.00**

**Total 5230 Capital Projects Fund Transfers**

**\$286,987.00**

Capital Reserve Fund - § 1431 (32)

4000 Facilities Acquisition, Construction and Improvement Services

Total

300 Purchased Professional and Technical Services

330 Other Professional Services

146,405.04

**Total Purchased Professional and Technical Services**

**\$146,405.04**

400 Purchased Property Services

450 Construction Services

682,250.34

**Total Purchased Property Services**

**\$682,250.34**

600 Supplies

610 General Supplies

1,642.00

**Total Supplies**

**\$1,642.00**

700 Property

756 Capitalized Technology Equipment – Original

816,531.90

**Total Property**

**\$816,531.90**

**Total 4000 Facilities Acquisition, Construction and Improvement Services**

**\$1,646,829.28**

LEA : 113364503 Manheim Township SD

Printed 10/30/2020 2:44:08 PM

Capital Reserve Fund - § 1431 (32)

4200 Existing Site Improvement Services

Elementary

Secondary

Federal

Total

400 Purchased Property Services

450 Construction Services

680,532.34

**Total Purchased Property Services**

**\$680,532.34**

**Total 4200 Existing Site Improvement Services**

**\$680,532.34**

LEA : 113364503 Manheim Township SD

Printed 10/30/2020 2:44:08 PM

Capital Reserve Fund - § 1431 (32)

4400 Architecture and Engineering Services / Educational Specifications – Improvements

Elementary

Secondary

Federal

Total

300 Purchased Professional and Technical Services

330 Other Professional Services

109,718.79

**Total Purchased Professional and Technical Services**

**\$109,718.79**

**Total 4400 Architecture and Engineering Services / Educational Specifications – Improvements**

**\$109,718.79**

Capital Reserve Fund - § 1431 (32)

4500 Building Acquisition and Construction Services – Original and Additional

Elementary

Secondary

Federal

Total

300 Purchased Professional and Technical Services

330 Other Professional Services

36,686.25

**Total Purchased Professional and Technical Services**

**\$36,686.25**

400 Purchased Property Services

450 Construction Services

1,718.00

**Total Purchased Property Services**

**\$1,718.00**

600 Supplies

610 General Supplies

1,642.00

**Total Supplies**

**\$1,642.00**

**Total 4500 Building Acquisition and Construction Services – Original and Additional**

**\$40,046.25**

LEA : 113364503 Manheim Township SD

Printed 10/30/2020 2:44:08 PM

Capital Reserve Fund - § 1431 (32)

4600 Existing Building Improvement Services

Elementary

Secondary

Federal

Total

700 Property

756 Capitalized Technology Equipment – Original

816,531.90

**Total Property**

**\$816,531.90**

**Total 4600 Existing Building Improvement Services**

**\$816,531.90**

LEA : 113364503 Manheim Township SD

Printed 10/30/2020 2:43:38 PM

**Other Capital Projects Fund (39)**

**2000 Support Services**

**800 Other Objects**

810 Dues and Fees

**Total**

87,549.05

**Total Other Objects**

**\$87,549.05**

**Total 2000 Support Services**

**\$87,549.05**

LEA : 113364503 Manheim Township SD

Printed 10/30/2020 2:43:38 PM

Other Capital Projects Fund (39)

2300 Support Services – Administration

Elementary

Secondary

Federal

Total

800 Other Objects

810 Dues and Fees

87,549.05

**Total Other Objects**

**\$87,549.05**

**Total 2300 Support Services – Administration**

**\$87,549.05**



LEA : 113364503 Manheim Township SD

Printed 10/30/2020 2:43:38 PM

Other Capital Projects Fund (39)

2390 Other Administration Services

Elementary

Secondary

Federal

Total

800 Other Objects

810 Dues and Fees

87,549.05

**Total Other Objects**

**\$87,549.05**

**Total 2390 Other Administration Services**

**\$87,549.05**

**Other Capital Projects Fund (39)**

**4000 Facilities Acquisition, Construction and Improvement Services**

**Total**

**400 Purchased Property Services**

450 Construction Services

24,863,324.64

**Total Purchased Property Services**

**\$24,863,324.64**

**Total 4000 Facilities Acquisition, Construction and Improvement Services**

**\$24,863,324.64**

Other Capital Projects Fund (39)

4500 Building Acquisition and Construction Services – Original and Additional

Elementary

Secondary

Federal

Total

400 Purchased Property Services

450 Construction Services

24,863,324.64

**Total Purchased Property Services**

**\$24,863,324.64**

**Total 4500 Building Acquisition and Construction Services – Original and Additional**

**\$24,863,324.64**

LEA : 113364503 Manheim Township SD

Printed 10/30/2020 2:43:42 PM

**Debt Service Fund (40)**

**2000 Support Services**

**800 Other Objects**

810 Dues and Fees

225,818.20

**Total Other Objects**

**\$225,818.20**

**Total 2000 Support Services**

**\$225,818.20**

LEA : 113364503 Manheim Township SD

Printed 10/30/2020 2:43:42 PM

Debt Service Fund (40)

2300 Support Services – Administration

Elementary

Secondary

Federal

Total

800 Other Objects

810 Dues and Fees

225,818.20

**Total Other Objects**

**\$225,818.20**

**Total 2300 Support Services – Administration**

**\$225,818.20**

LEA : 113364503 Manheim Township SD

Printed 10/30/2020 2:43:42 PM

Debt Service Fund (40)

2390 Other Administration Services

Elementary

Secondary

Federal

Total

800 Other Objects

810 Dues and Fees

225,818.20

**Total Other Objects**

**\$225,818.20**

**Total 2390 Other Administration Services**

**\$225,818.20**

**Debt Service Fund (40)**

**5000 Other Expenditures and Financing Uses**

**Total**

**800 Other Objects**

830 Interest 94,015.03

**Total Other Objects \$94,015.03**

**900 Other Uses of Funds**

910 Redemption of Principal 23,820,000.00

**Total Other Uses of Funds \$23,820,000.00**

**Total 5000 Other Expenditures and Financing Uses \$23,914,015.03**

LEA : 113364503 Manheim Township SD

Printed 10/30/2020 2:44:26 PM

Debt Service Fund (40)

5100 Debt Service / Other Expenditures and Financing Uses	<u>Elementary</u>	<u>Secondary</u>	<u>Federal</u>	<u>Total</u>
800 <u>Other Objects</u>				
830 Interest				94,015.03
<b>Total Other Objects</b>				<b>\$94,015.03</b>
900 <u>Other Uses of Funds</u>				
910 Redemption of Principal				23,820,000.00
<b>Total Other Uses of Funds</b>				<b>\$23,820,000.00</b>
<b>Total 5100 Debt Service / Other Expenditures and Financing Uses</b>				<b>\$23,914,015.03</b>



LEA : 113364503 Manheim Township SD

Printed 10/30/2020 2:44:26 PM

Debt Service Fund (40)

5110 Debt Service

800 Other Objects

830 Interest

**Total Other Objects**

**Total 5110 Debt Service**

Elementary

Secondary

Federal

Total

8,280.27

**\$8,280.27**

**\$8,280.27**

Debt Service Fund (40)

5120 Debt Service – Refunded Bonds	<u>Elementary</u>	<u>Secondary</u>	<u>Federal</u>	<u>Total</u>
800 <u>Other Objects</u>				
830 Interest				85,734.76
<b>Total Other Objects</b>				<b>\$85,734.76</b>
900 <u>Other Uses of Funds</u>				
910 Redemption of Principal				23,820,000.00
<b>Total Other Uses of Funds</b>				<b>\$23,820,000.00</b>
<b>Total 5120 Debt Service – Refunded Bonds</b>				<b>\$23,905,734.76</b>

	<u>General Fund(10)</u>	<u>Student Sponsored Activity Fund(21)</u>	<u>Public Purpose Trust(27)</u>	<u>Other Compt Approved (28)</u>	<u>Athletic / Activity(29)</u>
<b>1000 Instruction</b>					
1100 Regular Programs - Elementary / Secondary	42,551,882.77				
1200 Special Programs - Elementary / Secondary	10,613,969.63				
1300 Vocational Education	954,822.77				
1400 Other Instructional Programs - Elementary / Secondary	319,857.52				
1500 Nonpublic School Programs	26,911.90				
<b>Total Instruction</b>	<b>\$54,467,444.59</b>				
<b>2000 Support Services</b>					
2100 Support Services - Students	3,949,480.51				
2200 Support Services - Instructional Staff	5,147,671.07				
2300 Support Services - Administration	5,421,456.73				
2400 Support Services - Pupil Health	1,333,045.42				
2500 Support Services - Business	760,713.36				
2600 Operation and Maintenance of Plant Services	8,604,287.25				
2700 Student Transportation Services	3,172,589.22				
2800 Support Services - Central	838,431.09				
2900 Other Support Services	68,593.60				
<b>Total Support Services</b>	<b>\$29,296,268.25</b>				
<b>3000 Operation of Non-Instructional Services</b>					
3200 Student Activities	1,564,912.01				
3300 Community Services	14,022.93				
<b>Total Operation of Non-Instructional Services</b>	<b>\$1,578,934.94</b>				
<b>4000 Facilities Acquisition, Construction and Improvement Services</b>					
4200 Existing Site Improvement Services					
4300 Architecture and Engineering Services / Educational Specifications Development - Original and Additional	2,800.00				
4400 Architecture and Engineering Services / Educational Specifications - Improvements					
4500 Building Acquisition and Construction Services - Original and Additional	37,138.50				
4600 Existing Building Improvement Services					
<b>Total Facilities Acquisition, Construction and Improvement Services</b>	<b>\$39,938.50</b>				
<b>5000 Other Expenditures and Financing Uses</b>					
5100 Debt Service / Other Expenditures and Financing Uses	14,946,450.96				
5200 Interfund Transfers - Out	286,987.00				
<b>Total Other Expenditures and Financing Uses</b>	<b>\$15,233,437.96</b>				
<b>TOTAL ACTUAL EXPENDITURES &amp; OTHER FINANCING USES</b>	<b>\$100,616,024.24</b>				

	<u>Capital Reserve (690. 1850)(31)</u>	<u>Capital Reserve (1431)(32)</u>	<u>Other Capital Projects Fund(39)</u>	<u>Debt Service(40)</u>	<u>Permanent(90)</u>
<b>1000 Instruction</b>					
1100 Regular Programs - Elementary / Secondary					
1200 Special Programs - Elementary / Secondary					
1300 Vocational Education					
1400 Other Instructional Programs - Elementary / Secondary					
1500 Nonpublic School Programs					
<b>Total Instruction</b>					
<b>2000 Support Services</b>					
2100 Support Services - Students					
2200 Support Services - Instructional Staff					
2300 Support Services - Administration			87,549.05	225,818.20	
2400 Support Services - Pupil Health					
2500 Support Services - Business					
2600 Operation and Maintenance of Plant Services					
2700 Student Transportation Services					
2800 Support Services - Central					
2900 Other Support Services					
<b>Total Support Services</b>			<b>\$87,549.05</b>	<b>\$225,818.20</b>	
<b>3000 Operation of Non-Instructional Services</b>					
3200 Student Activities					
3300 Community Services					
<b>Total Operation of Non-Instructional Services</b>					
<b>4000 Facilities Acquisition, Construction and Improvement Services</b>					
4200 Existing Site Improvement Services		680,532.34			
4300 Architecture and Engineering Services / Educational Specifications Development - Original and Additional					
4400 Architecture and Engineering Services / Educational Specifications - Improvements		109,718.79			
4500 Building Acquisition and Construction Services - Original and Additional		40,046.25	24,863,324.64		
4600 Existing Building Improvement Services		816,531.90			
<b>Total Facilities Acquisition, Construction and Improvement Services</b>		<b>\$1,646,829.28</b>	<b>\$24,863,324.64</b>		
<b>5000 Other Expenditures and Financing Uses</b>					
5100 Debt Service / Other Expenditures and Financing Uses				23,914,015.03	
5200 Interfund Transfers - Out					
<b>Total Other Expenditures and Financing Uses</b>				<b>\$23,914,015.03</b>	
<b>TOTAL ACTUAL EXPENDITURES &amp; OTHER FINANCING USES</b>		<b>\$1,646,829.28</b>	<b>\$24,950,873.69</b>	<b>\$24,139,833.23</b>	

**Total**

<b>1000 <u>Instruction</u></b>	
1100 Regular Programs - Elementary / Secondary	42,551,882.77
1200 Special Programs - Elementary / Secondary	10,613,969.63
1300 Vocational Education	954,822.77
1400 Other Instructional Programs - Elementary / Secondary	319,857.52
1500 Nonpublic School Programs	26,911.90
<b>Total Instruction</b>	<b>\$54,467,444.59</b>
<b>2000 <u>Support Services</u></b>	
2100 Support Services - Students	3,949,480.51
2200 Support Services - Instructional Staff	5,147,671.07
2300 Support Services - Administration	5,734,823.98
2400 Support Services - Pupil Health	1,333,045.42
2500 Support Services - Business	760,713.36
2600 Operation and Maintenance of Plant Services	8,604,287.25
2700 Student Transportation Services	3,172,589.22
2800 Support Services - Central	838,431.09
2900 Other Support Services	68,593.60
<b>Total Support Services</b>	<b>\$29,609,635.50</b>
<b>3000 <u>Operation of Non-Instructional Services</u></b>	
3200 Student Activities	1,564,912.01
3300 Community Services	14,022.93
<b>Total Operation of Non-Instructional Services</b>	<b>\$1,578,934.94</b>
<b>4000 <u>Facilities Acquisition, Construction and Improvement Services</u></b>	
4200 Existing Site Improvement Services	680,532.34
4300 Architecture and Engineering Services / Educational Specifications Development - Original and Additional	2,800.00
4400 Architecture and Engineering Services / Educational Specifications - Improvements	109,718.79
4500 Building Acquisition and Construction Services - Original and Additional	24,940,509.39
4600 Existing Building Improvement Services	816,531.90
<b>Total Facilities Acquisition, Construction and Improvement Services</b>	<b>\$26,550,092.42</b>
<b>5000 <u>Other Expenditures and Financing Uses</u></b>	
5100 Debt Service / Other Expenditures and Financing Uses	38,860,465.99
5200 Interfund Transfers - Out	286,987.00
<b>Total Other Expenditures and Financing Uses</b>	<b>\$39,147,452.99</b>
<b>TOTAL ACTUAL EXPENDITURES &amp; OTHER FINANCING USES</b>	<b>\$151,353,560.44</b>

LEA : 113364503 Manheim Township SD

Printed 10/30/2020 2:45:04 PM

**PSERS Salary Data (Salary Data should relate to the General Fund only)**

<b>Amount Description</b>	<b>Amount</b>
Total Salary Base for salaries subject to PSERS withholding	41,614,119.26
Total Federally Funded salaries subject to PSERS withholding	515,986.28
	<hr/>

**Title I Expenditure Data**

<b>Amount Description</b>	<b>Amount</b>
Expenditures Funded with Current Title I Funds	559,911.71
Expenditures Funded with Carry over Title I Funds	126,011.58
	<hr/>
<b>Total Title I Expenditure Data</b>	<b>\$685,923.29</b>
	<hr/>

**Benefits for Staff Relative to Collective Bargaining Agreements**

	OBJECT	COVERED	NOT COVERED	TOTAL
<b>10 General Fund</b>	<b>No Self Insurance data to report</b>			
	211 Medical Insurance			
	212 Dental Insurance			
	215 Eye Care Insurance	57,097.58	19,032.53	76,130.11
	216 Prescription Insurance			
	271 Self-Insurance Medical Benefits			
	272 Self-Insurance Dental Benefits			
	275 Self-Insurance Eye Care Benefits			
	276 Self-Insurance Prescription Benefits			
	<b>FUND TOTAL</b>		<b>\$57,097.58</b>	<b>\$19,032.53</b>
<b>50 Enterprise Fund</b>	<b>No Self Insurance data to report</b>			
	211 Medical Insurance			
	212 Dental Insurance			
	215 Eye Care Insurance		2,453.59	2,453.59
	216 Prescription Insurance			
	271 Self-Insurance Medical Benefits			
	272 Self-Insurance Dental Benefits			
	275 Self-Insurance Eye Care Benefits			
	276 Self-Insurance Prescription Benefits			
	<b>FUND TOTAL</b>			<b>\$2,453.59</b>
<b>60 Internal Service Fund</b>				
	211 Medical Insurance			
	212 Dental Insurance			
	215 Eye Care Insurance			
	216 Prescription Insurance			
	271 Self-Insurance Medical Benefits	4,173,364.02	1,391,121.71	5,564,485.73
	272 Self-Insurance Dental Benefits	247,714.70	82,571.57	330,286.27
	275 Self-Insurance Eye Care Benefits			
	276 Self-Insurance Prescription Benefits	1,211,181.75	403,727.25	1,614,909.00
	<b>FUND TOTAL</b>	<b>\$5,632,260.47</b>	<b>\$1,877,420.53</b>	<b>\$7,509,681.00</b>
<b>Total of All Funds</b>		<b>\$5,689,358.05</b>	<b>\$1,898,906.65</b>	<b>\$7,588,264.70</b>

LEA : 113364503 Manheim Township SD

Printed 10/30/2020 2:45:24 PM

Function	Special Education (Prior Year)	Nonspecial Education (Prior Year)	Total (Prior Year)	Special Education (Current Year)	Nonspecial Education (Current Year)	Total (Current Year)
2120 Guidance Services	297,464.95	1,970,607.70	2,268,072.65	345,569.29	2,006,188.92	2,351,758.21
2140 Psychological Services	738,406.21	184,601.55	923,007.76	640,363.78	160,090.95	800,454.73
2150 Speech Pathology and Audiology Services						
2160 Social Work Services	12,098.08	80,145.80	92,243.88	30,387.91	176,415.85	206,803.76
2260 Instruction and Curriculum Development Services	615,062.33	633,726.54	1,248,788.87	636,762.01	1,088,431.84	1,725,193.85
2350 Legal and Accounting Services	85,636.53	237,115.80	322,752.33	28,611.16	163,496.39	192,107.55
2420 Medical Services	207,939.39	48,579.21	256,518.60	203,963.31	50,850.84	254,814.15
2440 Nursing Services	130,765.41	866,277.91	997,043.32	158,436.19	919,795.08	1,078,231.27
2700 Student Transportation Services	882,563.06	2,511,155.13	3,393,718.19	573,846.30	2,598,742.92	3,172,589.22
<b>Total</b>	<b>\$2,969,935.96</b>	<b>\$6,532,209.64</b>	<b>\$9,502,145.60</b>	<b>\$2,617,939.95</b>	<b>\$7,164,012.79</b>	<b>\$9,781,952.74</b>



(PRINCIPAL AMOUNTS ONLY)

**GOVERNMENTAL FUNDS/ ACTIVITIES**

	Short-Term Borrowing	General Obligation Bonds/Notes	Authority Building Obligations	Other Long-Term Debt	Other Post-Employment Benefits (OPEB)	Compensated Absences	Net Pension Liability	Total
1. Debt at Beginning of Fiscal Year		130,955,000.00		790,746.00	16,759,647.00	543,888.00	135,163,000.00	284,212,281.00
2. Additional Debt Incurred During Year		26,845,000.00			783,995.00	230,210.00		27,859,205.00
3. Retirements and Repayments		32,805,000.00		790,746.00			2,161,000.00	35,756,746.00
4. Debt at End of Fiscal Year		124,995,000.00			17,543,642.00	774,098.00	133,002,000.00	276,314,740.00
5. Accreted Interest at End Of Fiscal Year								
6. Total Debt and Accreted Interest		124,995,000.00			17,543,642.00	774,098.00	133,002,000.00	276,314,740.00
7. Current Portion P&I - Due within 1 year		14,532,292.07						14,532,292.07
8. Interest Paid during current fiscal year		5,262,278.67		1,526.48				5,263,805.15

(PRINCIPAL AMOUNTS ONLY)

**PROPRIETARY FUNDS**

	Short-Term Borrowing	General Obligation Bonds/Notes	Authority Building Obligations	Other Long-Term Debt	Other Post-Employment Benefits (OPEB)	Compensated Absences	Net Pension Liability	Total
1. Debt at Beginning of Fiscal Year					359,588.00		2,899,000.00	3,258,588.00
2. Additional Debt Incurred During Year								
3. Retirements and Repayments					178,816.00		185,000.00	363,816.00
4. Debt at End of Fiscal Year					180,772.00		2,714,000.00	2,894,772.00
5. Accreted Interest at End Of Fiscal Year								
6. Total Debt and Accreted Interest					180,772.00		2,714,000.00	2,894,772.00
7. Current Portion P&I - Due within 1 year								
8. Interest Paid during current fiscal year								

**Total Principal and Interest Payments Made by Your School - All Funds**

Function	Fund		Principal (910)	Principal (920)	Interest (830)	Total (Principal +Interest)	Misc Other Uses (990)
5110	10	General Fund	9,775,735.08		5,169,790.12	14,945,525.20	
5110	20	Special Revenue Funds					
5110	30	Capital Projects Funds					
5110	40	Debt Service Fund			8,280.27	8,280.27	
5110	90	Permanent Fund					
5120	10	General Fund					
5120	20	Special Revenue Funds					
5120	30	Capital Projects Funds					
5120	40	Debt Service Fund	23,820,000.00		85,734.76	23,905,734.76	
<b>Total Debt Payments - Governmental Funds</b>			<b>\$33,595,735.08</b>		<b>\$5,263,805.15</b>	<b>\$38,859,540.23</b>	

Function	Fund		Principal (910)	Principal (920)	Interest (830)	Total (Principal +Interest)
5110	50	Enterprise Fund				
5110	60	Internal Service Fund				
5120	50	Enterprise Fund				
5120	60	Internal Service Fund				
<b>Total Debt Payments - Proprietary Funds</b>						

**Debt Details**  
**Governmental Funds/ Activities**

Debt Category	Debt Issue Date (MM/YYYY)	Principal Amounts Only				Current Portion Due Within One Year (Principal and Interest)	Interest Paid During Fiscal Year
		Debt at Beginning of Fiscal Year	Additions	Reductions / Repayments	Debt at End of Fiscal Year		
General Obligation Bonds/Notes – CIB	12/2016	9,470,000.00		9,470,000.00			239,984.86
General Obligation Bonds/Notes – CIB	2/2020		26,845,000.00		26,845,000.00	898,351.35	
General Obligation Bonds/Notes – CIB	4/2019	9,995,000.00		505,000.00	9,490,000.00	1,327,907.50	268,057.50
General Obligation Bonds/Notes – CIB	4/2018	44,995,000.00		5,000.00	44,990,000.00	2,156,693.76	2,151,783.78
General Obligation Bonds/Notes – CIB	4/2018	11,010,000.00		485,000.00	10,525,000.00	929,150.00	418,850.00
General Obligation Bonds/Notes – CIB	8/2017	38,195,000.00		5,845,000.00	32,350,000.00	8,401,339.46	1,706,637.13
General Obligation Bonds/Notes – CIB	5/2017	9,020,000.00		9,020,000.00			237,678.14
General Obligation Bonds/Notes – CIB	3/2015	810,000.00		810,000.00			12,150.00
General Obligation Bonds/Notes – CIB	1/2014	20,000.00		20,000.00			420.00
General Obligation Bonds/Notes – CIB	2/2013	1,570,000.00		775,000.00	795,000.00	818,850.00	47,100.00
General Obligation Bonds/Notes – CIB	3/2012	5,870,000.00		5,870,000.00			179,617.26
Other Long Term Debt/Liabilities		790,746.00		790,746.00			1,526.48
Compensated Absences		543,888.00	230,210.00		774,098.00		
Other Post-Employment Benefits (OPEB)		16,759,647.00	783,995.00		17,543,642.00		
Net Pension Liability		135,163,000.00		2,161,000.00	133,002,000.00		
<b>Totals for Debt Entered:</b>		<b>\$284,212,281.00</b>	<b>\$27,859,205.00</b>	<b>\$35,756,746.00</b>	<b>\$276,314,740.00</b>	<b>\$14,532,292.07</b>	<b>\$5,263,805.15</b>

**Bond Details**  
**Proprietary Funds**

Debt Category	Debt Issue Date (MM/YYYY)	Principal Amounts Only				Current Portion Due Within One Year (Principal and Interest)	Interest Paid During Fiscal Year
		Debt at Beginning of Fiscal Year	Additions	Reductions / Repayments	Debt at End of Fiscal Year		
Other Post-Employment Benefits (OPEB)		359,588.00		178,816.00	180,772.00		
Net Pension Liability		2,899,000.00		185,000.00	2,714,000.00		
<b>Totals for Debt Entered:</b>		<b>\$3,258,588.00</b>		<b>\$363,816.00</b>	<b>\$2,894,772.00</b>		

**General Fund (10)**

**Section 1: Tuition/Purchased Services as Reported within Expenditure Detail**

	<b>Amount</b>
Tuition Reported in General Fund Expenditures 1000-560	3,145,268.57
Purchased Services in General Fund Expenditures 1000-594 and 1000-597	1,261.29
<b>Section 1 Total</b>	<b>\$3,146,529.86</b>

**Section 2: Tuition Paid to Institution Types During Fiscal Year**

	<b>Tuition Paid For Nonspecial Education</b>	<b>Tuition Paid For Special Education</b>	<b>Total</b>
1 1306 Institutions			
2 Institutionalized Children's Programs		1,261.29	1,261.29
3 Juveniles Incarcerated in Adult Facilities			
4 Residential Treatment Facilities		3,628.50	3,628.50
5 Other Local Education Agencies	22,770.75	169,686.36	192,457.11
6 Brick and Mortar Charter Schools	56,709.83	42,974.83	99,684.66
7 Cyber Charter Schools	864,027.77	262,119.08	1,126,146.85
8 Career and Technology Centers	869,329.25		869,329.25
9 Approved Private Schools		392,951.77	392,951.77
10 PA Chartered Schools for the Deaf and Blind			
11 Private Residential Rehabilitative Institutions	824.80		824.80
12 Juvenile Detention Centers			
13 Special Program Jointures	48,500.00		48,500.00
14 Other Tuition Not Included Elsewhere In This Section	183,277.60	228,468.03	411,745.63
<b>Section 2 Total</b>	<b>\$2,045,440.00</b>	<b>\$1,101,089.86</b>	<b>\$3,146,529.86</b>

LEA : 113364503 Manheim Township SD

Printed 10/30/2020 2:45:51 PM

**Food Service / Cafeteria Operations Fund (51)**

**3000 Operation of Non-Instructional Services**

**Total**

**100 Personnel Services – Salaries**

100 Personnel Services – Salaries 917,090.32

**Total Personnel Services – Salaries**

**\$917,090.32**

**200 Personnel Services – Employee Benefits**

210 Group Insurance – Contracted Provider 2,806.28

220 Social Security Contributions 69,190.96

230 PSERS Retirement Contributions 272,839.33

250 Unemployment Compensation 532.57

260 Workers' Compensation 6,023.80

270 Group Insurance – Self-Insurance 278,542.42

280 Other Post-Employment Benefits (OPEB) (29,328.00)

292 Health Savings Accounts 26,000.00

299 All Other Employee Benefits 120.00

**Total Personnel Services – Employee Benefits**

**\$626,727.36**

**300 Purchased Professional and Technical Services**

330 Other Professional Services 30,671.28

**Total Purchased Professional and Technical Services**

**\$30,671.28**

**400 Purchased Property Services**

410 Cleaning Services 6,909.59

430 Repairs and Maintenance Services 54,416.42

440 Rentals 1,301.57

**Total Purchased Property Services**

**\$62,627.58**

**500 Other Purchased Services**

530 Communications 1,295.10

540 Advertising 504.35

550 Printing and Binding 1,446.90

580 Travel 3,498.44

**Total Other Purchased Services**

**\$6,744.79**

**600 Supplies**

610 General Supplies 77,072.75

620 Energy 2,692.43

630 Food 866,923.61

640 Books and Periodicals 673.44

650 Supplies & Fees – Technology Related 16,340.68

**Total Supplies**

**\$963,702.91**

**700 Property**

740 Depreciation 100,983.29

**Total Property**

**\$100,983.29**

**800 Other Objects**

810 Dues and Fees 2,282.41

**Total Other Objects**

**\$2,282.41**

**Total 3000 Operation of Non-Instructional Services**

**\$2,710,829.94**



LEA : 113364503 Manheim Township SD

Printed 10/30/2020 2:45:40 PM

**Internal Service Fund (60)**

**2000 Support Services**

**Total**

**200 Personnel Services – Employee Benefits**

270 Group Insurance – Self-Insurance

7,509,680.62

**Total Personnel Services – Employee Benefits**

**\$7,509,680.62**

**800 Other Objects**

810 Dues and Fees

4,143.32

**Total Other Objects**

**\$4,143.32**

**Total 2000 Support Services**

**\$7,513,823.94**

LEA : 113364503 Manheim Township SD

Printed 10/30/2020 2:45:40 PM

Internal Service Fund (60)

2800 Support Services – Central

Elementary

Secondary

Federal

Total

200 Personnel Services – Employee Benefits

270 Group Insurance – Self-Insurance

7,509,680.62

**Total Personnel Services – Employee Benefits**

**\$7,509,680.62**

800 Other Objects

810 Dues and Fees

4,143.32

**Total Other Objects**

**\$4,143.32**

**Total 2800 Support Services – Central**

**\$7,513,823.94**



Internal Service Fund (60)

2890 Other Support Services Central

Elementary

Secondary

Federal

Total

200 Personnel Services – Employee Benefits

270 Group Insurance – Self-Insurance

7,509,680.62

**Total Personnel Services – Employee Benefits**

**\$7,509,680.62**

800 Other Objects

810 Dues and Fees

4,143.32

**Total Other Objects**

**\$4,143.32**

**Total 2890 Other Support Services Central**

**\$7,513,823.94**

	<u>Food Service(51)</u>	<u>Child Care Operations(52)</u>	<u>Other Enterprise(58)</u>	<u>Internal Service(60)</u>	<u>Total</u>
<b>2000 Support Services</b>					
2800 Support Services - Central				7,513,823.94	7,513,823.94
<b>Total Support Services</b>				<b>\$7,513,823.94</b>	<b>\$7,513,823.94</b>
<b>3000 Operation of Non-Instructional Services</b>					
3100 Food Services	2,710,829.94				2,710,829.94
<b>Total Operation of Non-Instructional Services</b>	<b>\$2,710,829.94</b>				<b>\$2,710,829.94</b>
<b>TOTAL ACTUAL EXPENDITURES &amp; OTHER FINANCING USES</b>	<b>\$2,710,829.94</b>			<b>\$7,513,823.94</b>	<b>\$10,224,653.88</b>

LEA : 113364503 Manheim Township SD

Printed 10/30/2020 2:46:21 PM

Fund	School	School Number	Local Personnel	Local Nonpersonnel	State Personnel	State Nonpersonnel	Federal Personnel	Federal Nonpersonnel	Total	Explanation
10	Brecht Sch	2619	2,746,470.47	489,609.27	743,661.83	132,571.50	60,192.84	17,476.06	4,189,981.97	
	Bucher Sch	6733	3,737,355.69	612,737.56	1,011,963.82	165,910.95	678.40	26,079.69	5,554,726.11	
	Landis Run Intermediate School	8246	7,591,834.96	1,434,302.01	2,055,641.20	388,365.96	10,052.14	60,568.19	11,540,764.46	
	Manheim Twp HS	2623	15,698,038.64	3,520,169.48	4,250,558.04	953,156.32	469,509.14	131,059.40	25,022,491.02	
	Manheim Twp MS	5114	8,995,745.65	1,393,466.95	2,435,778.12	377,309.05	151,605.67	104,983.64	13,458,889.08	
	Neff Sch	2621	2,894,228.12	590,994.31	783,670.17	160,023.53	546.69	21,016.44	4,450,479.26	
	Nitrauer Sch	4708	3,757,205.26	739,802.53	1,017,338.50	200,316.34	33,726.05	32,562.87	5,780,951.55	
	Reidenbaugh El Sch	7383	3,505,694.51	661,327.65	949,236.93	179,067.70	594.21	22,843.14	5,318,764.14	
	Schaeffer Sch	2620	2,873,971.12	536,620.92	778,185.18	145,300.85	519.32	19,964.07	4,354,561.46	
<b>Total</b>			<b>51,800,544.42</b>	<b>9,979,030.68</b>	<b>14,026,033.79</b>	<b>2,702,022.20</b>	<b>727,424.46</b>	<b>436,553.50</b>	<b>79,671,609.05</b>	