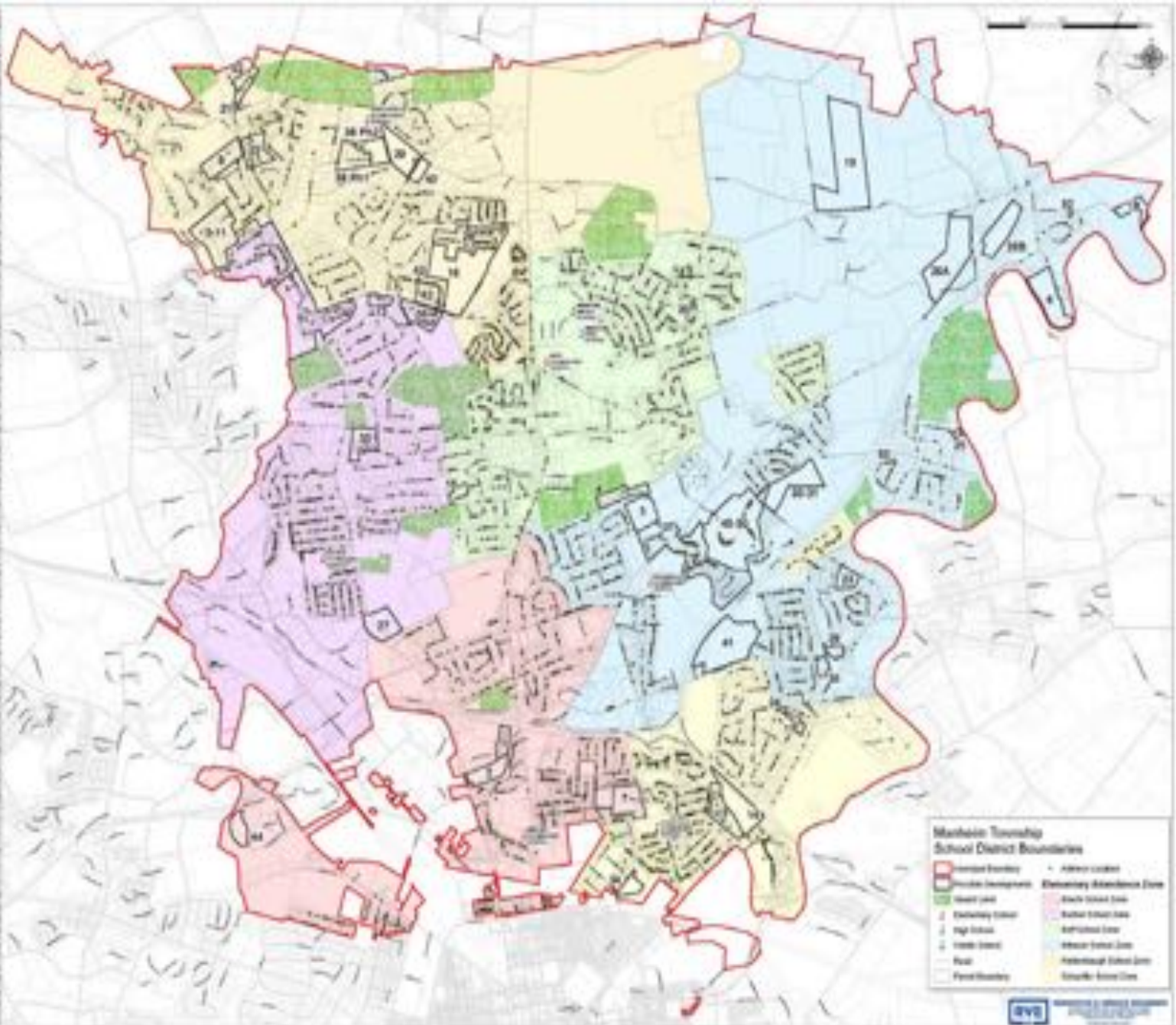




Planning for Increasing Student Enrollment

School Board Meeting
November 21, 2019

1	2	3	4	5	6	7	8	9	10	11	12	13	14	15	16	17	18	19	20	21	22	23	24	25	26	27	28	29	30	31	32	33	34	35	36	37	38	39	40	41	42	43	44	45	46	47	48	49	50	51	52	53	54	55	56	57	58	59	60	61	62	63	64	65	66	67	68	69	70	71	72	73	74	75	76	77	78	79	80	81	82	83	84	85	86	87	88	89	90	91	92	93	94	95	96	97	98	99	100
101	102	103	104	105	106	107	108	109	110	111	112	113	114	115	116	117	118	119	120	121	122	123	124	125	126	127	128	129	130	131	132	133	134	135	136	137	138	139	140	141	142	143	144	145	146	147	148	149	150	151	152	153	154	155	156	157	158	159	160	161	162	163	164	165	166	167	168	169	170	171	172	173	174	175	176	177	178	179	180	181	182	183	184	185	186	187	188	189	190	191	192	193	194	195	196	197	198	199	200



Investigating Options for Enrollment Growth

- Purchasing land and building a new school
- Renovating and/or adding on to an elementary school(s)
- Building on to LRIS -- adding 4th grade
(adding ~460 students to ~975 students, totaling 1,435 students)
- Renovating Neff II building & designing new school for early learners (kindergarten)
- Redistricting
- Reconfiguring programs/grade levels
- Combining several different options – phasing-in options
- Doing nothing

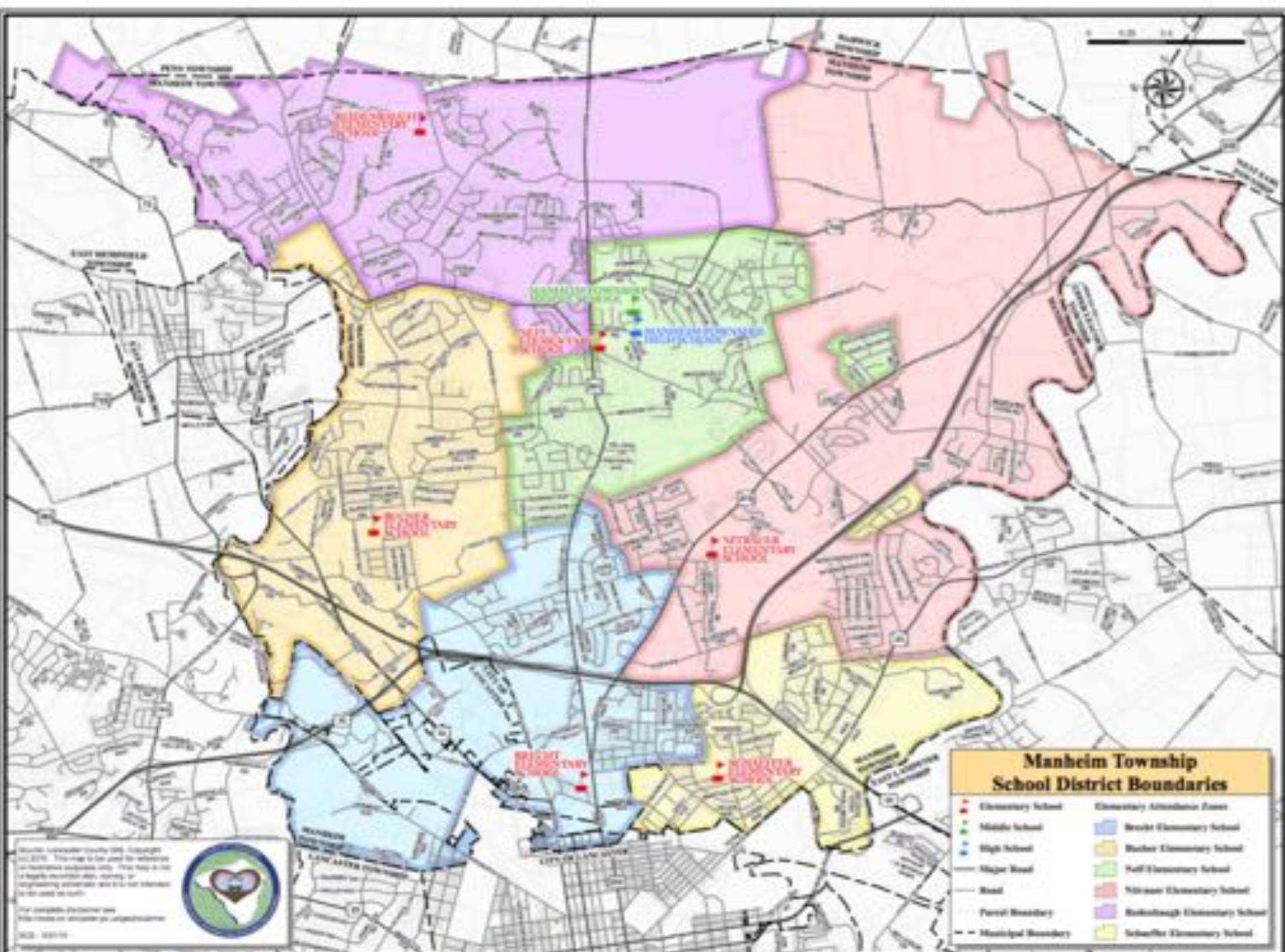


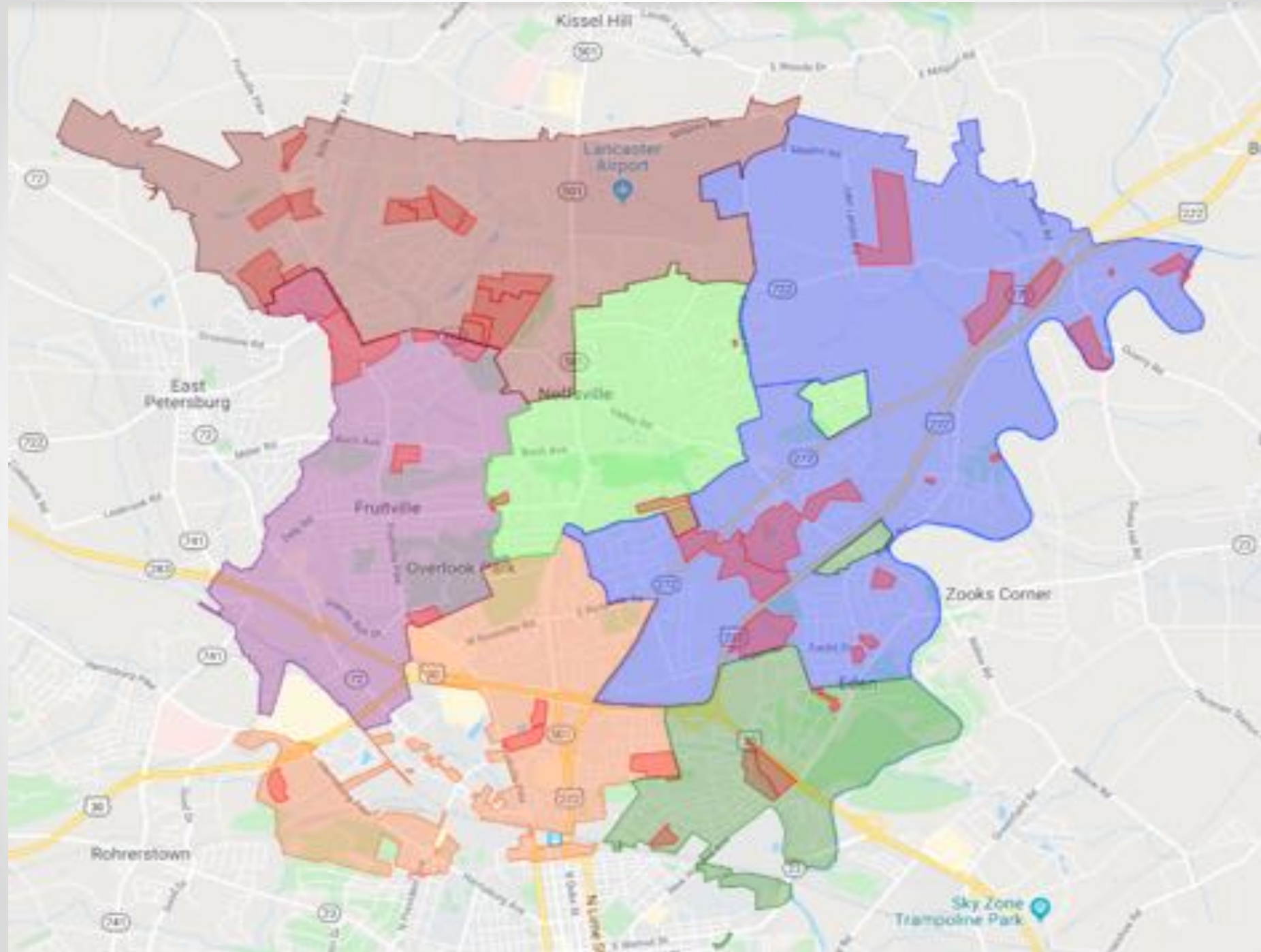
Planning for Increasing Enrollment

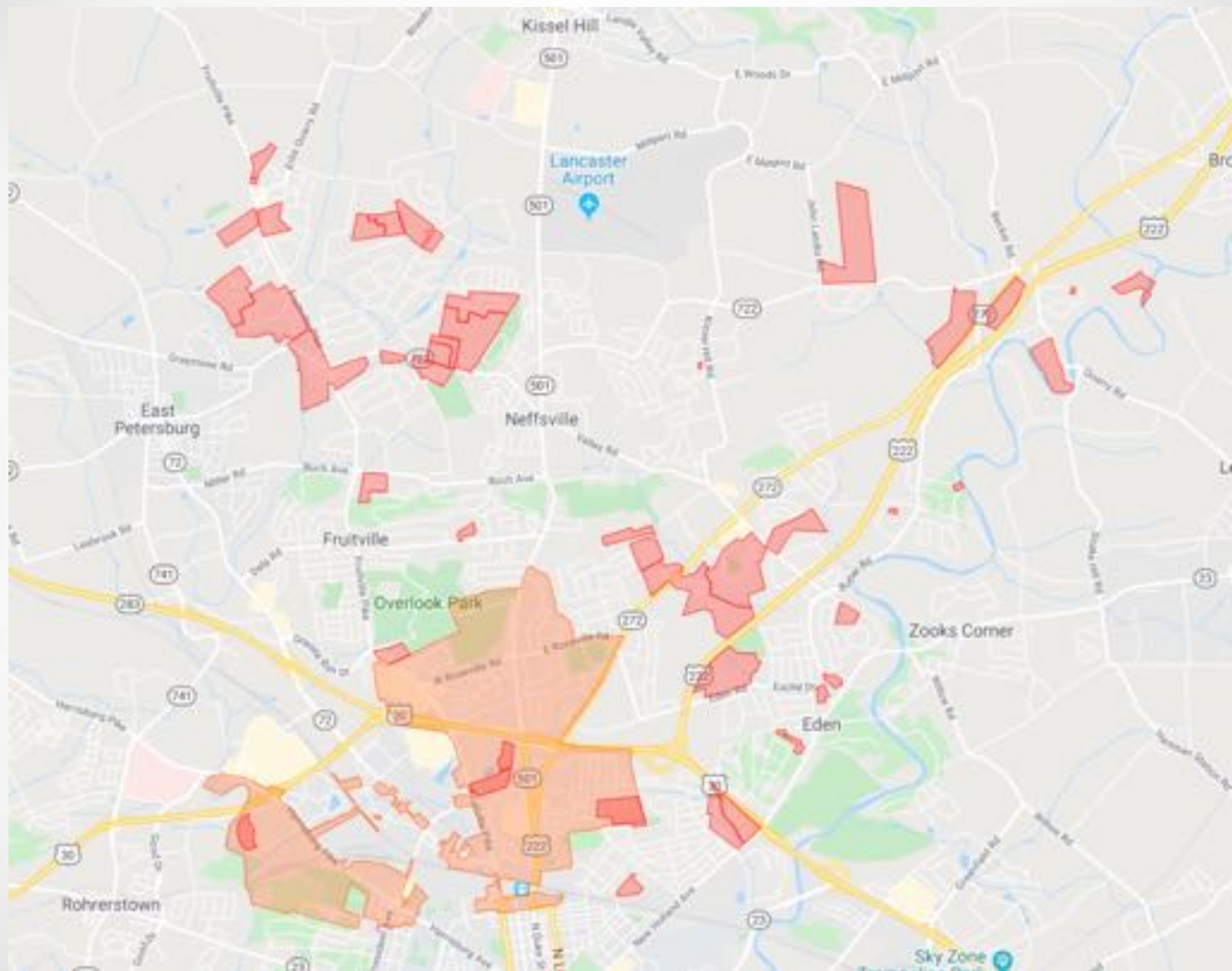
Key considerations

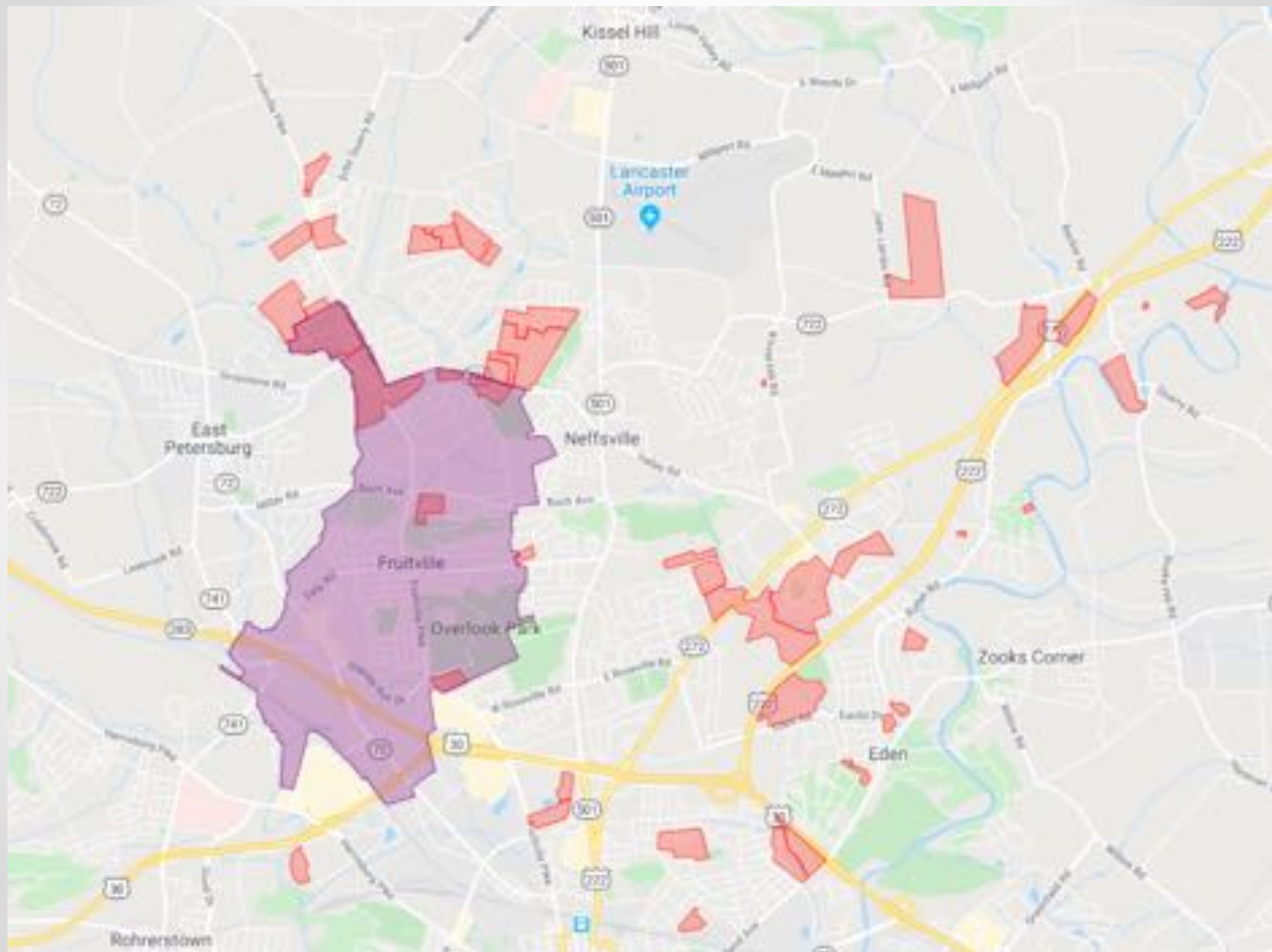
- School capacity analysis
- Two-prong review
 - Prong 1: *Does the “plan” show fiscal responsibility to the community/taxpayers?*
 - Prong 2: *Does the “plan” provide educational benefit to students?*

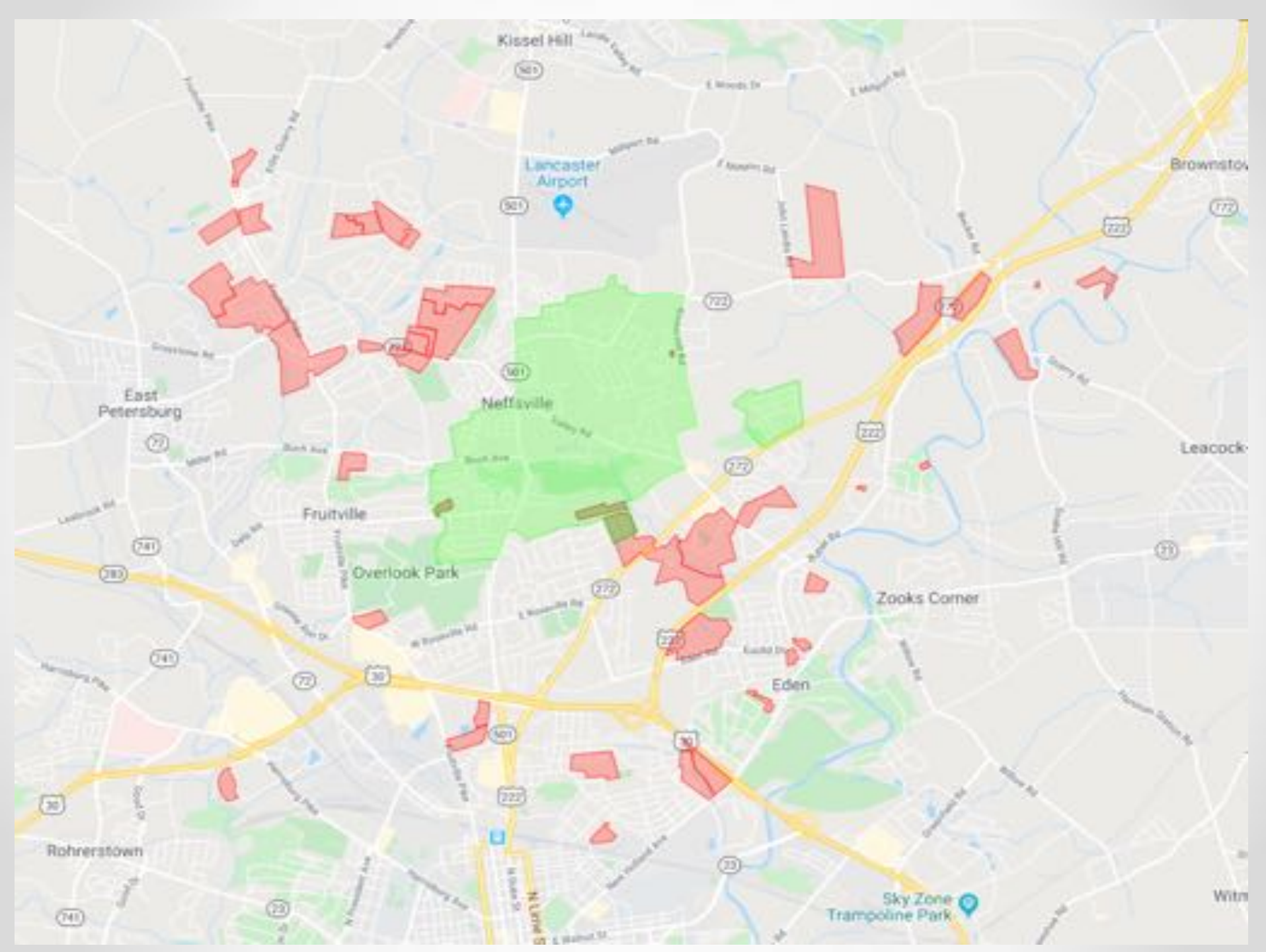


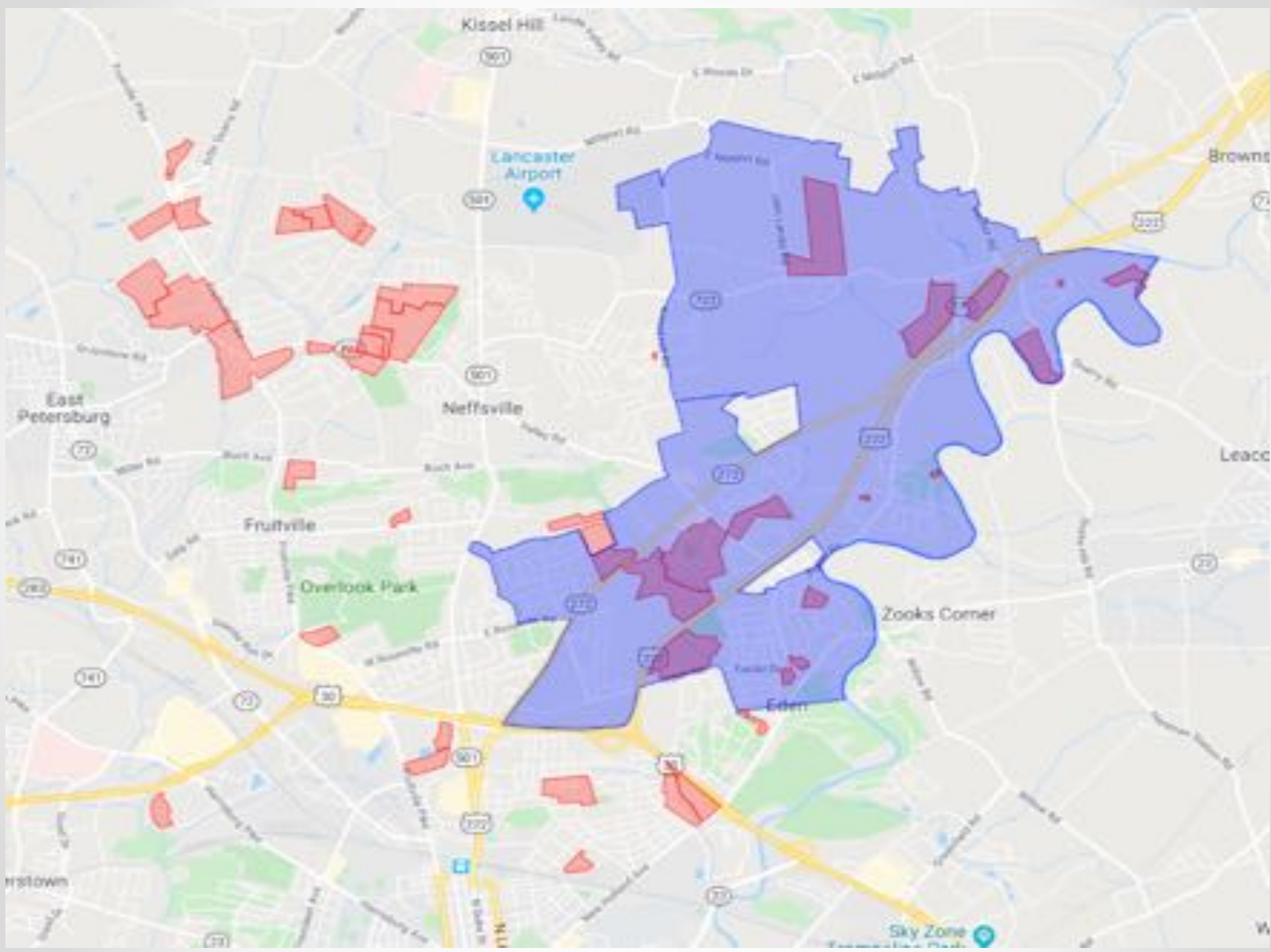


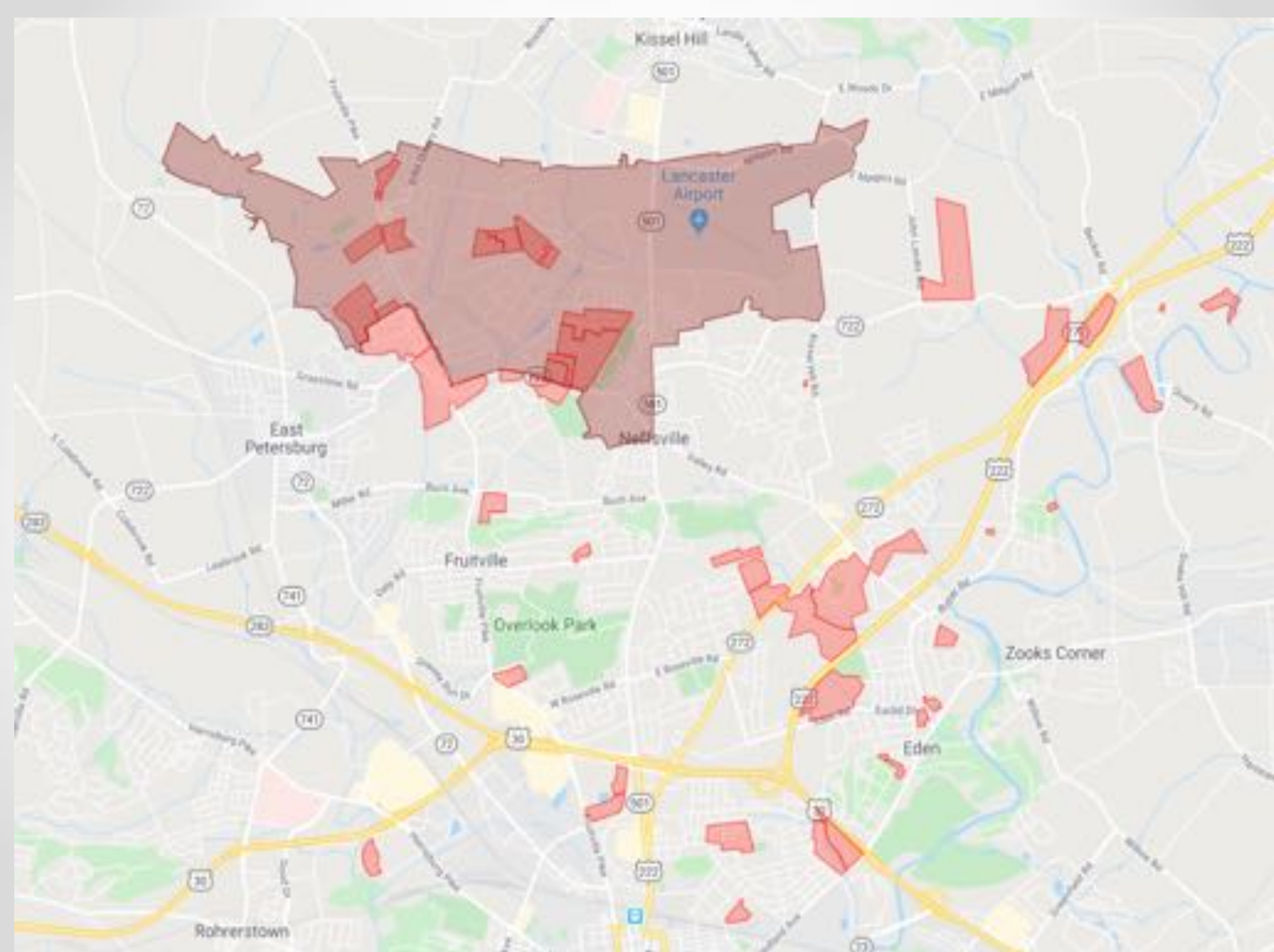


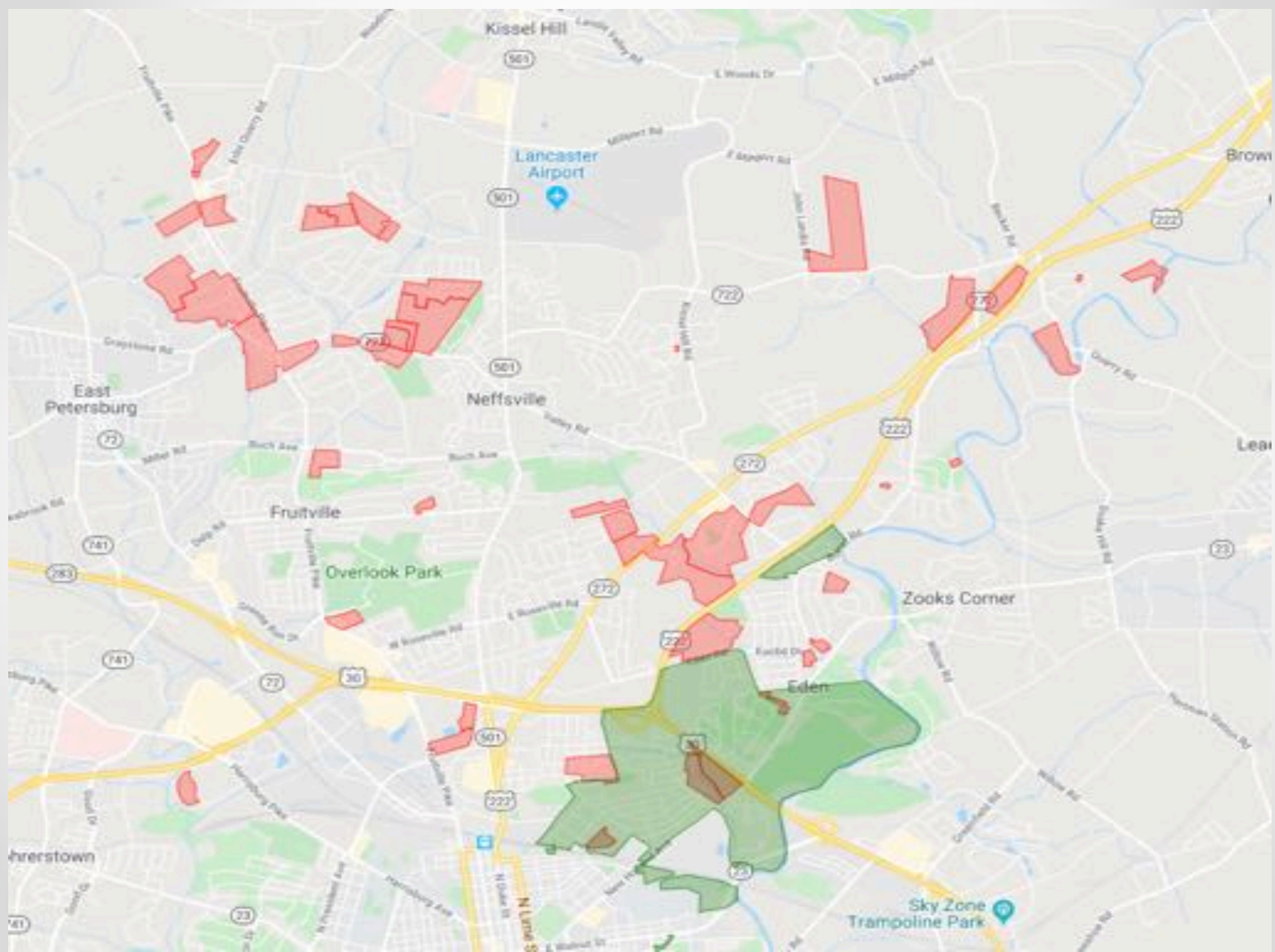












Review of Redistricting Option

Implications:

- Site capacity
- Housing development assignments to elementary schools
- Timeline of growth: predicted enrollment within each attendance boundary
- Transportation efficiencies
- Walking zones



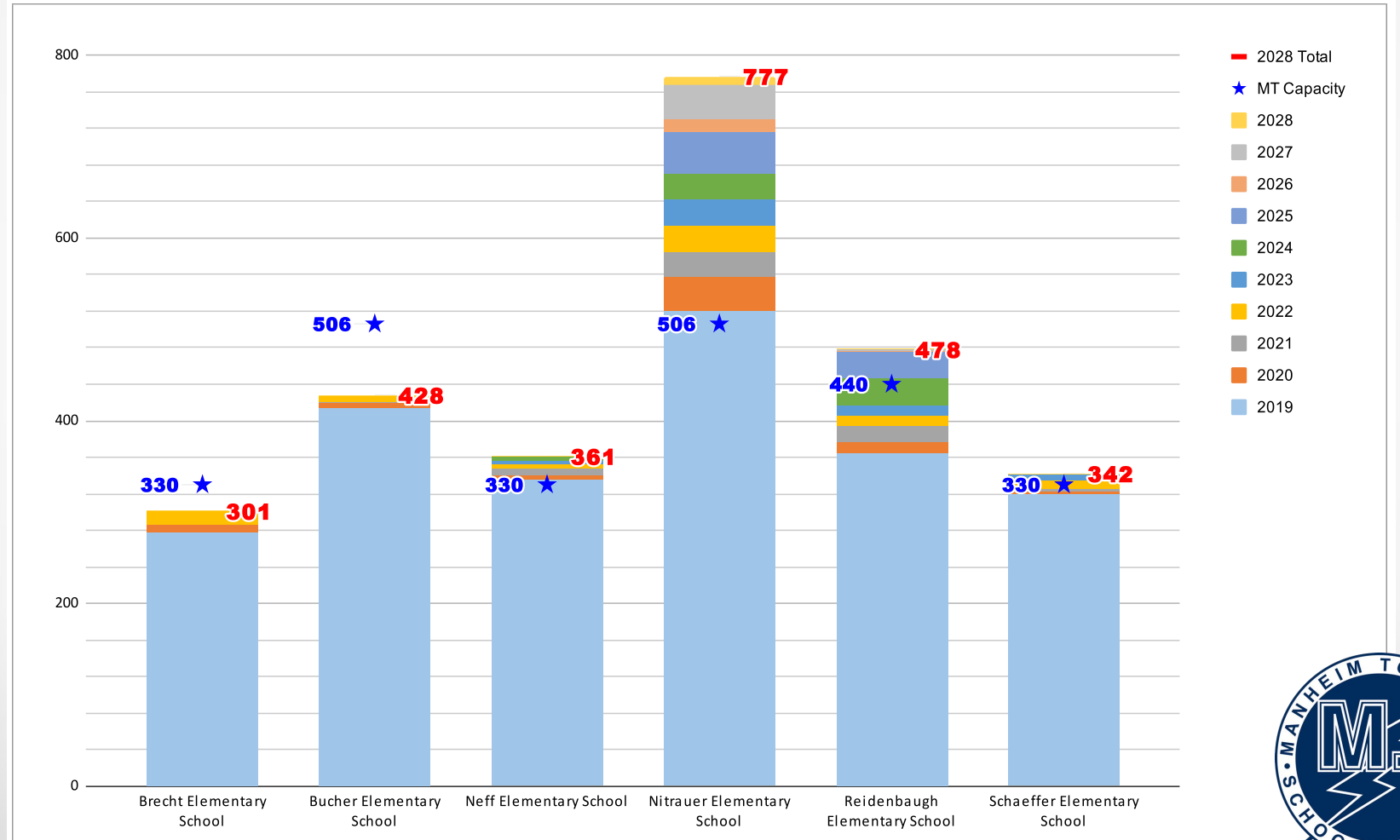
Annual Enrollment Projections through 2028

Review #1: 5/13th's of Total Projected Students

- Enrollment projections represent 5/13ths of total projected students from within each development (with K-4 representing approx. 5/13ths of total student population)
- Limitations to demographers' predictions for # of families that will move into district (ex. # Kindergarten students vs. 7th Grade Students)
- Probable underestimation of actual enrollments in K-4

5/13th's of Total Projected Students

School Name	2019	2020	2021	2022	2023	2024	2025	2026	2027	2028	Projected Change	2028 Total	MT Capacity	Year Exceeded
Brecht Elementary School	278	8	0	15	0	0	0	0	0	0	23	301	330	N/A
Bucher Elementary School	414	7	0	7	0	0	0	0	0	0	14	428	506	N/A
Neff Elementary School	336	5	6	5	5	4	0	0	0	0	25	361	330	2019
Nitrauer Elementary School	520	39	26	28	29	29	46	13	37	10	257	777	506	2019
Reidenbaugh Elementary School	365	12	17	12	12	29	29	1	1	0	113	478	440	2024
Schaeffer Elementary School	320	3	3	8	8	0	0	0	0	0	22	342	330	2022



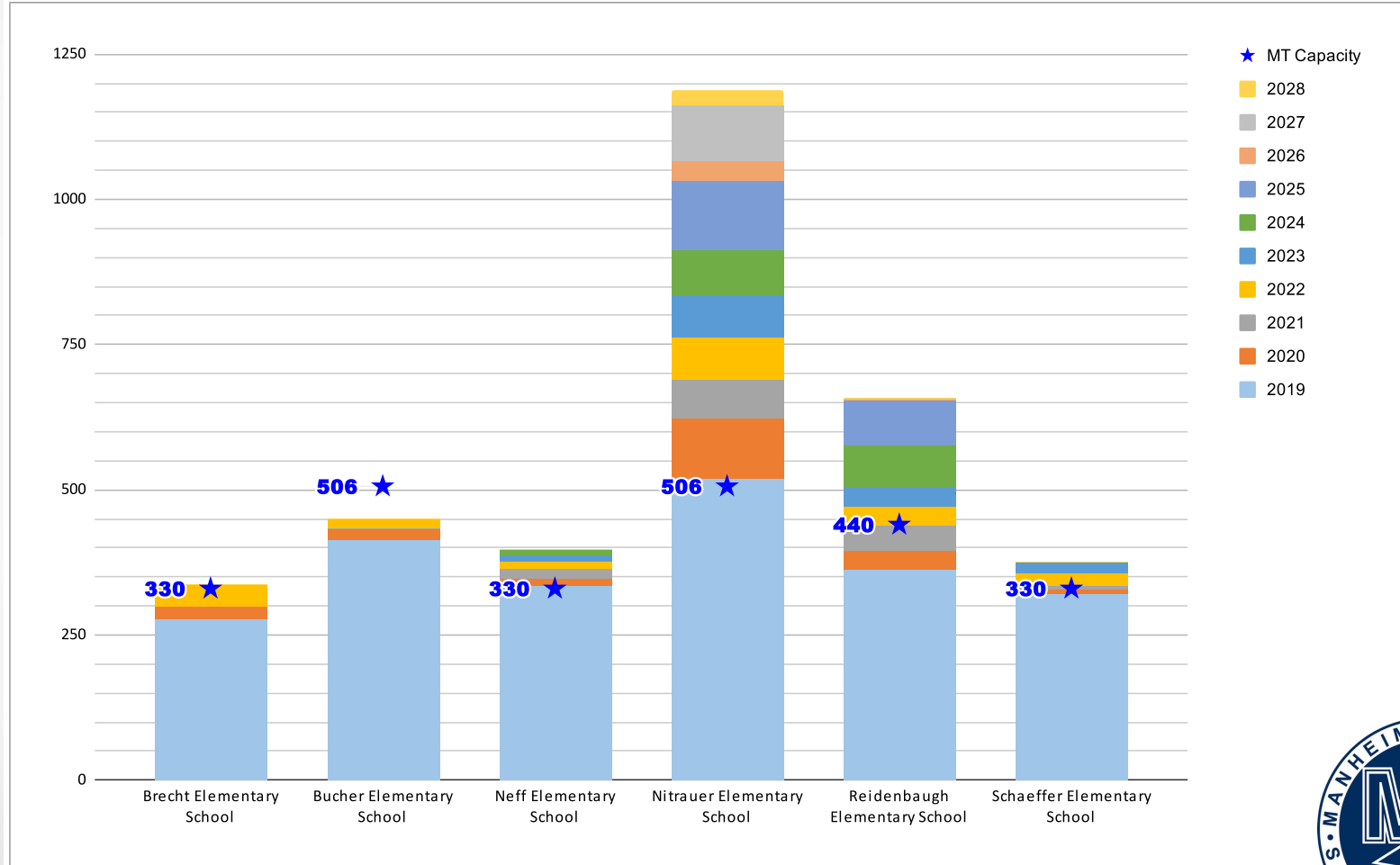
Annual Enrollment Projections through 2028

Review #2: Total Raw Data Projections for Students

- Enrollment projections represent raw total of new students projected from within each development
- Worst case scenario
 - Reflects new enrollment (ex. not relocating from another school within MTSD)
 - All children grades K-4
- Review provides context of where impact will be felt, even though totals are likely higher than what will actually come to fruition

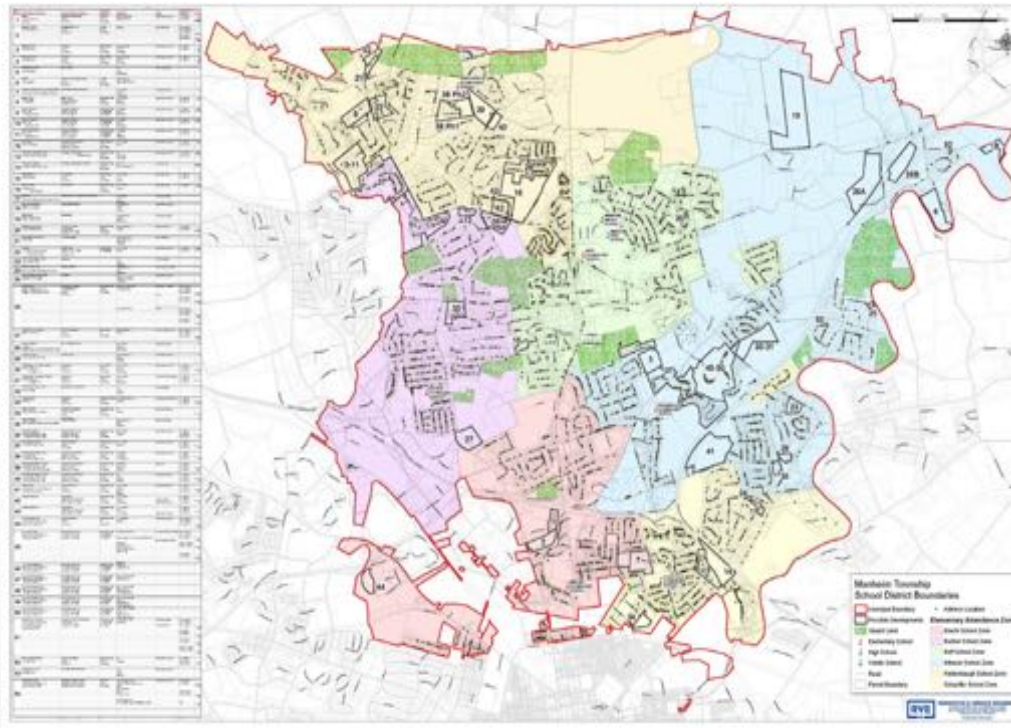
Total Raw Data Projections for Students

School Name	2019	2020	2021	2022	2023	2024	2025	2026	2027	2028	Projected Change	2028 Total	MT Capacity	Year Exceeded
Brecht Elementary School	278	22	0	38	0	0	0	0	0	0	60	338	330	2022
Bucher Elementary School	414	19	0	17	0	0	0	0	0	0	36	450	506	N/A
Neff Elementary School	336	12	15	12	12	10	0	0	0	0	61	397	330	2019
Nitrauer Elementary School	520	102	68	72	75	75	120	33	97	27	669	1189	506	2019
Reidenbaugh Elementary School	365	31	43	32	32	75	75	2	2	1	293	658	440	2022
Schaeffer Elementary School	320	8	8	20	20	0	0	0	0	0	56	376	330	2021



Next Steps

- Continued research of options
- Upcoming public presentations at Board Meetings
re: student enrollment data & progress with research



Questions

