



**Manheim Township School District
2015 District Facilities Needs Assessment**



Presentation Outline

- Who we are & why we are here
- Prior Facilities Needs Assessment
- Work Completed from Prior Study
- District-Wide Facility Needs Update
 - Enrollment
 - Deficiencies
 - Overall Findings
- Next Steps



Introduction – Who we are...

- History of RVB
- History of RVB with MTSD
- Interview 2005
- 2006 District-Wide Facilities Study
- 2015 District-Wide Facilities Update



Facilities Study & Needs Assessment

- A feasibility study is one of the most important phases of the planning process when considering a school construction project. As part of your facilities analysis, the project team reviews:
 - The educational philosophy of the community
 - The requirements of the expanded/renovated facilities
 - The educational objectives of the school system
 - The project budget and cost estimates
- A needs assessment must happen first



District-Wide vs. Project Planning

- Meeting the guidelines or truly being open to the process
 - District Philosophy 2005/2006
 - Request for District-Wide Needs Assessment
 - Expectations of Enrollment and Development
 - Involvement of Focus Group/Community
 - Alternatives Analysis
 - District Philosophy 2015/2016
 - Again District-Wide Assessment without predispositions
 - Enrollment & Development Review
 - Involvement of Focus Group
 - Long-term use for capital maintenance



Facility Study Information..

- Assess the functional capacities of each school
- Assess technology
- Record deficiencies
- Assess ADA and other code compliance issues
- Alert school authorities to imminent hazards
- Provide a gauge of the educational adequacy of each school facility
- Produce concept drawings of the existing facilities
- Provide a relevant cost to correct identified deficiencies



Factors Considered & Reviewed

- Global
 - Enrollment Trends & Space Needs
 - Teaching methods
 - Educational Program
 - Community needs
- Specific
 - Life Safety & Security
 - Operations/maintenance savings
 - Structural integrity
 - Aesthetics
 - Regulations/codes



2006 Facilities Study

- The Process
 - Enrollment & Capacity Reviews
 - Principal & Administration Interviews
 - Physical School & Maintenance Review
 - Focus Group Iterative Meetings
- The Findings
 - Increasing Enrollment
 - Community Interest in Full-Day Kindergarten
 - Educational Concern with Bucher Open Layout
 - School Capacity Needs & Deficiencies Detailed



2006 Facilities Study

Schools at a Glance

School	Construction/ Renovation Year	Years Since Last Renovation	2006	2007	2008	2009	2010	2011	2012	2013	2014	2015	2016	2017	2018	2019	2020	2021	2022	2023	2024	2025
Manheim Township MS	1968	38	Red	Red	Red	Red	Red	Red	Red	Red	Red	Red	Red	Red	Red	Red	Red	Red	Red	Red	Red	Red
Bucher ES	1972	34	Red	Red	Red	Red	Red	Red	Red	Red	Red	Red	Red	Red	Red	Red	Red	Red	Red	Red	Red	Red
Nitrauer ES	1991	15	Green	Green	Green	Green	Green	Yellow	Yellow	Yellow	Yellow	Yellow	Yellow	Yellow	Yellow	Yellow	Yellow	Yellow	Yellow	Yellow	Yellow	Yellow
Neff ES	1996	10	Green	Green	Green	Green	Green	Green	Green	Green	Green	Green	Yellow	Yellow	Yellow	Yellow	Yellow	Yellow	Yellow	Yellow	Yellow	Yellow
Reidenbaugh ES	1997	9	Green	Green	Green	Green	Green	Green	Green	Green	Green	Green	Green	Yellow	Yellow	Yellow	Yellow	Yellow	Yellow	Yellow	Yellow	Yellow
Brecht ES	2000	6	Green	Green	Green	Green	Green	Green	Green	Green	Green	Green	Green	Green	Green	Green	Yellow	Yellow	Yellow	Yellow	Yellow	Yellow
Schaeffer ES	2003	3	Green	Green	Green	Green	Green	Green	Green	Green	Green	Green	Green	Green	Green	Green	Green	Green	Green	Yellow	Yellow	Yellow
Manheim Township HS	2006	0	Green	Green	Green	Green	Green	Green	Green	Green	Green	Green	Green	Green	Green	Green	Green	Green	Green	Green	Green	Green

Notes:

1. Recently renovated schools may have skipped some system improvements (i.e., interior doors/security hardware) that should be addressed as capital maintenance in the short-term.



District Projects – 2006 forward

- Bucher Elementary School Major Construction Project to address school deficiencies
- District Office Relocation to Bucher Site
- Creation of a 5-6 Academy – Landis Run
- Capital Maintenance Program
 - Annual upgrades to capture infrastructure needs not included in major construction projects



LANDIS RUN 5/6 ACADEMY



25

BUCHER ELEMENTARY SCHOOL



Where do we go from here?

MAINTAINING QUALITY FACILITIES...

RVB - NEEDS ASSESSMENT UPDATE...

2015 Facility Needs Assessment

District-Wide Facilities Study

- Enrollment Review
- School Capacity
 - Space Needs Review
- Principal Interviews
 - Space & System Needs
- System Deficiency Review
- Director / Administrator Interviews
- Focus Group Review
- Community Outreach



COHORT-SURVIVAL ENROLLMENT PROJECTIONS

District Name: **Manheim Township**

County: **Lancaster**

Notes: Historic enrollments are based district PIMS fall reports

Birth data is projected for 2015 forward

Projected birth data is based on the average of the prior 2 years

School Year	Births 5 Yrs. Ago	"s"	K	1st Gr.	2nd Gr.	3rd Gr.	4th Gr.	5th Gr.	K-5 Subt.	6th Gr.	7th Gr.	8th Gr.	6-8 Subt.	9th Gr.	10th Gr.	11th Gr.	12th Gr.	9-12 Subt.	K-12 Total
HISTORIC DATA																			
2010-11	372	1.038	386	422	460	450	448	495	2661	450	485	440	1375	469	448	488	434	1839	5875
				1.093	0.995	1.011	0.989	1.025		1.030	1.038	1.023		1.020	1.066	0.962	0.982		
2011-12	394	0.972	383	422	420	465	445	459	2594	510	467	496	1473	449	500	431	479	1859	5926
				1.094	1.005	1.057	1.015	1.022		0.985	0.992	0.985		1.000	1.009	0.936	0.970		
2012-13	371	1.092	405	419	424	448	472	455	2623	452	506	460	1418	496	453	468	418	1835	5876
				1.104	1.007	0.995	0.973	1.013		0.965	0.993	0.974		1.007	0.980	0.905	0.917		
2013-14	369	1.035	382	447	422	422	436	478	2587	439	449	493	1381	463	486	410	429	1788	5756
				1.094	1.054	1.017	1.017	1.007		1.004	1.000	0.998		0.959	0.978	0.949	0.920		
2014-15	367	1.144	420	418	471	429	429	439	2606	480	439	448	1367	473	453	461	377	1764	5737
Average Survival Rate		1.056		1.096	1.015	1.022	0.998	1.017		0.996	1.006	0.995		0.997	1.008	0.938	0.947		
PROJECTIONS																			
2015-16	379	1.056	400	460	424	482	428	436	2631	437	483	437	1357	446	477	425	427	1785	5773
				1.096	1.015	1.022	0.998	1.017		0.996	1.006	0.995		0.997	1.008	0.938	0.947		
2016-17	369	1.056	390	439	467	434	481	435	2646	434	440	480	1355	435	450	447	402	1735	5736
				1.096	1.015	1.022	0.998	1.017		0.996	1.006	0.995		0.997	1.008	0.938	0.947		
2017-18	404	1.056	427	427	446	478	433	489	2699	434	437	438	1308	479	439	422	424	1763	5771
				1.096	1.015	1.022	0.998	1.017		0.996	1.006	0.995		0.997	1.008	0.938	0.947		
2018-19	390	1.056	412	468	434	455	477	440	2687	487	436	435	1358	436	453	412	400	1730	5775
				1.096	1.015	1.022	0.998	1.017		0.996	1.006	0.995		0.997	1.008	0.938	0.947		
2019-20	397	1.056	419	452	475	443	455	485	2729	439	490	434	1362	433	440	453	390	1716	5807

"S" = survival ratio

~5800 students

Enrollment (2015)

- Enrollment is flat
- No construction associated with increase
- No need to re-district
- Focus can be placed where needed
 - Condition of Existing Facilities
 - Function of Existing Facilities
 - Curriculum Impacts
 - Program Needs



Principal & Directors Findings (2015)

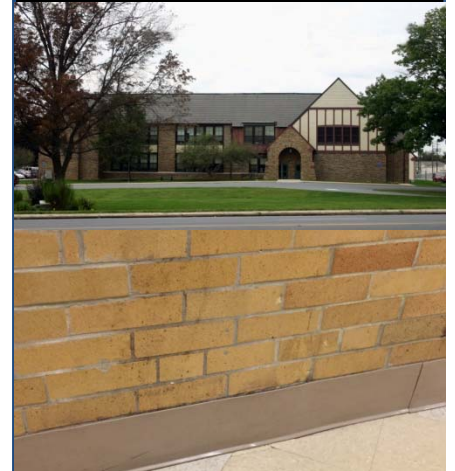
District-wide concerns

- Need for administrative conference space
- Cafeteria sizes
- Pick up Queue
- Need network upgrades and consistent network dedicated spaces in schools
- Need improved toileting for special needs
- In need of Gifted/Club/STEM spaces
- Standardize card access & security cameras
- Assess security camera needs by school – equity of use
- Assess elementary playground needs and equity



Needs Assessment – Findings (2015)

- Brecht Elementary School
 - Building
 - Enclose eaves / cover siding
 - Repair interior brick marks (re-trim)
 - Mechanical & Electrical Deficiencies
 - Mechanical equipment reaching useful life
 - Electrical transformer efficiency & ventilation
 - Interior Lighting levels (gym)
 - Exterior security lighting
 - Misc signage & receptacles



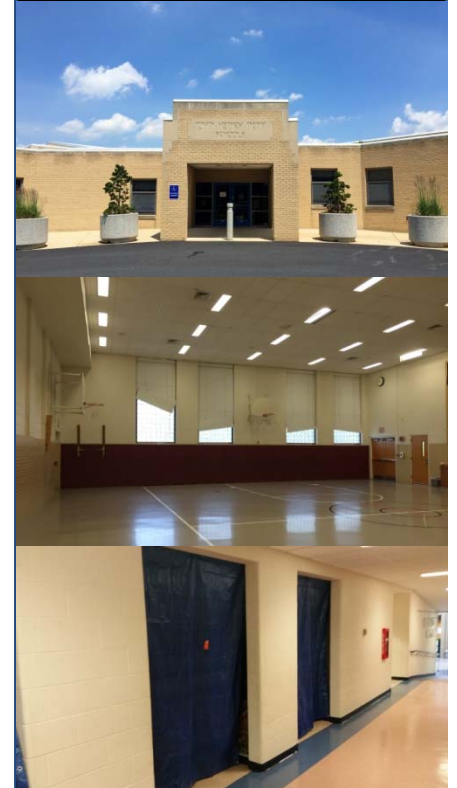
Needs Assessment – Findings (2015)

- Bucher Elementary School
 - 2009 Construction Project
 - Queuing line & traffic concern



Needs Assessment – Findings (2015)

- Neff Complex
 - Glass block windows in gym
 - Playground asphalt upgrades
 - Nurse Suite ADA compliance
 - Tarped corridor storage areas
 - Corridor & circulation space upgrades
 - Mechanical /Electrical equipment reaching end of life
 - AHU, Pumps, energy recovery equipment
 - Domestic HWH, no return line
 - Transformer efficiencies & ventilation



Needs Assessment – Findings (2015)

- Nitrauer Elementary School
 - Isolated upgrades needed of exterior doors, hardware & toilet facilities
 - ADA Hardware at classrooms
 - Lighting: windowless library, gym, exterior
 - Corridor & Circulation area upgrades
 - Aging plumbing fixtures
 - Mechanical & electrical deficiencies
 - Aging boilers – fair, but watch life
 - Rooftop Mechanical Equipment life
 - Combination pneumatic & digital DDC
 - Transformer efficiency & ventilation



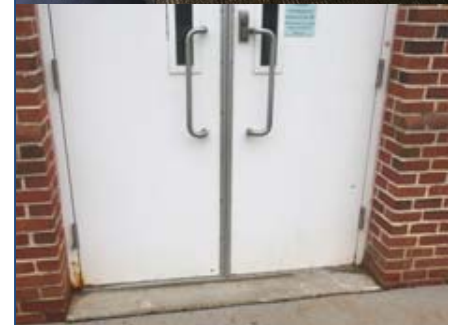
Needs Assessment – Findings (2015)

- Reidenbaugh Elementary School
 - Building Signage Improvements (Aud/Gym)
 - Mechanical and electrical deficiencies/age
 - Domestic HWH
 - Cooling tower, Chiller & pumps
 - AHUs
 - Electrical Westinghouse gear/panels unsupported
 - Transformer efficiency & ventilation
 - Fire alarm devices original (panel new)



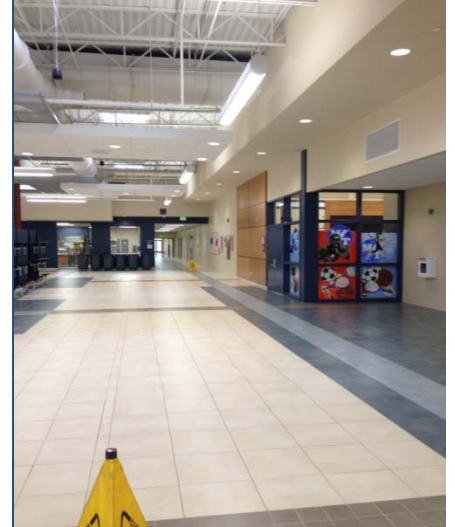
Needs Assessment – Findings (2015)

- Schaeffer Elementary School
 - Exterior doors
 - Pumps aging.
 - HWH aging
 - Transformer efficiency & ventilation
 - Lighting levels in gym



Needs Assessment – Findings (2015)

- Landis Run 5/6 Grade Center
 - Unable to close off Gym area for community use
 - Insufficient exterior electrical receptacles (PTO/outdoor activities)
 - Grass fields east of school underutilized (Back 40)



Needs Assessment – Findings (2015)

- Middle School
 - Science Labs needed
 - Gymnasium can't fit spectator seating
 - Auditorium undersized & in need of renovation
 - Cafeteria undersized
 - Tech Labs upgrades, FCS inadequate (gas)
 - Narrow stairwells, elevator function & size
 - Locker Rooms upgrades needed
 - No special needs toileting support
 - Toilet room upgrades needed
 - General aged systems throughout



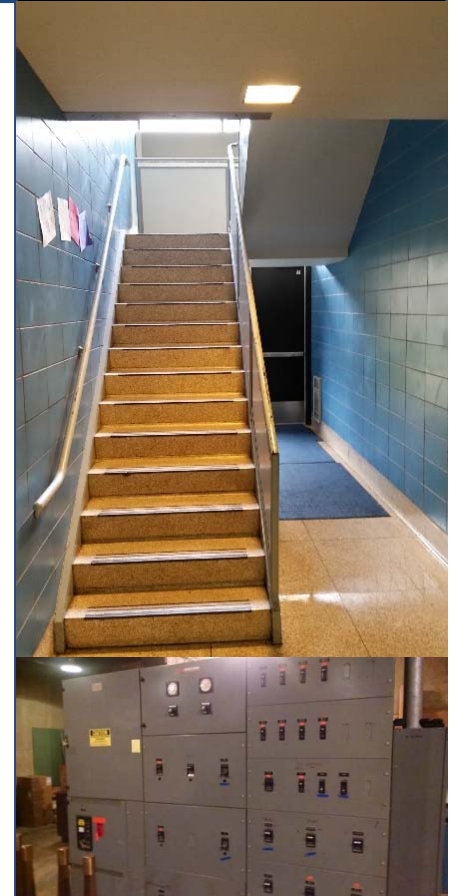
Needs Assessment – Findings (2015)

- Middle School
 - Building envelope: roof, windows, exterior doors
 - Wire glass in corridors
 - Cracking, failures in many terrazzo corridor locations
 - Interior doors & hardware compliance issues
 - ADA accessibility issues throughout



Needs Assessment – Findings (2015)

- Middle School
 - Major Mechanical & Electrical Deficiencies
 - HWH
 - Fixtures, ADA compliance
 - Original Piping: Sanitary & domestic
 - Boilers, hydronic system pumps
 - No corridor or stairwell ventilation (excluded from 1997 HVAC upgrade)
 - AHUs, etc aging
 - No fire suppression – expected if school renovated
 - Electrical service & branch panel upgrades
 - Interior lighting mix of T8 & T-12's
 - Emergency Gas shut off
 - Additional fire alarm devices recommended



Needs Assessment – Findings (2015)

- High School
 - Safe school improvements at main office
 - Undersized geothermal well field
 - Narrow corridors (student input)
 - Lack of camera coverage
 - Poor site signage



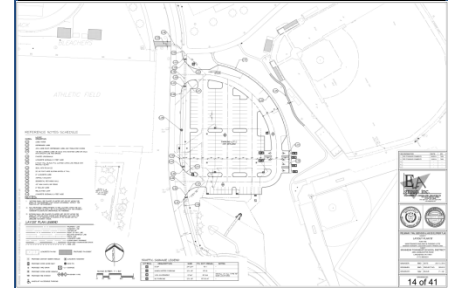
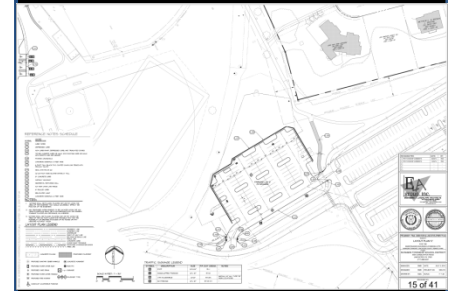
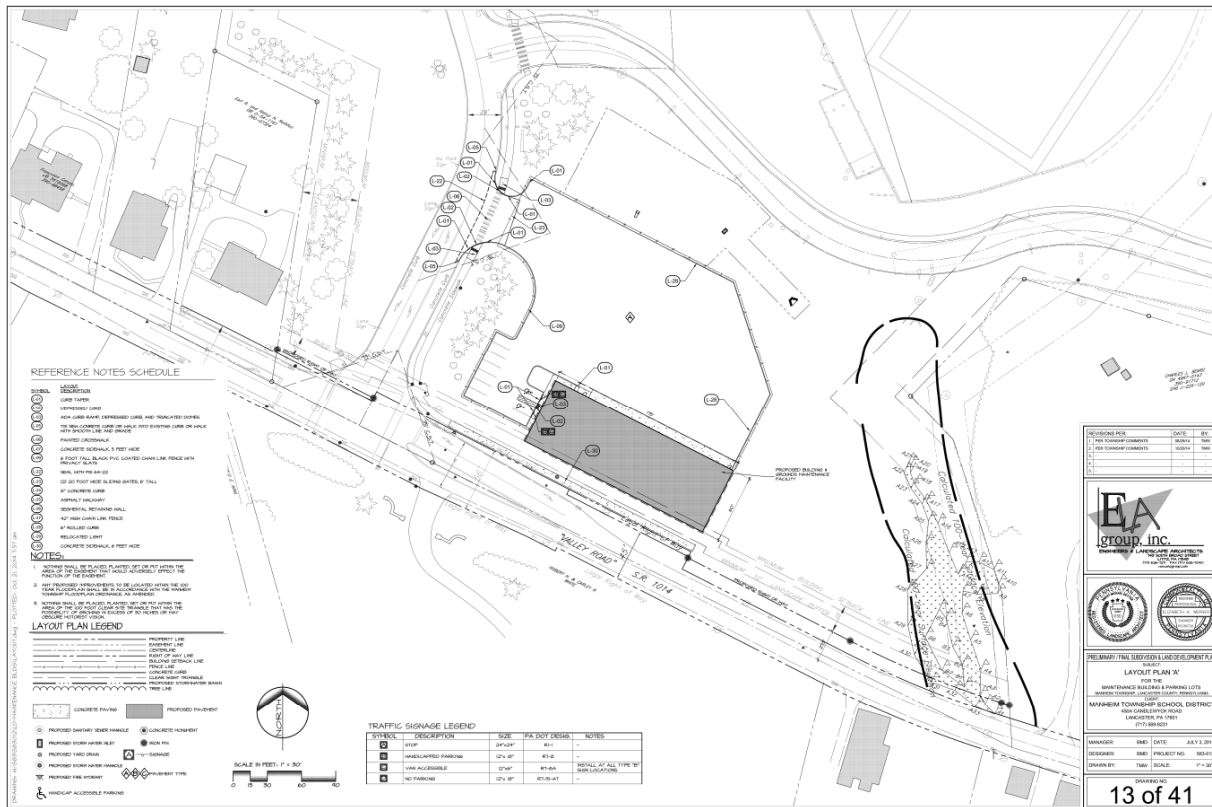
Needs Assessment – Findings (2015)

- High School
 - Stadium upgrades
 - Home restrooms & concessions, lighting - underway as identified in 2006
 - Bleacher safety aisle rails
 - Renovation needs for visitor restroom & concession
 - Need stadium locker rooms
 - Turf Field 10 year old, anticipate renovation
 - Bleachers/Lighting at non stadium fields
 - Baseball lighting at end of life
 - Event Parking Concerns



Needs Assessment – Findings (2015)

- Expiring approval of parking lot & maintenance building



Focus Group Findings (2015)

- “Love the new Bucher”, “Love Landis Run”, Middle School “dark & dreary”
 - “Bad AC & ventilation”, especially auditorium
 - “Non-functional Pods”
 - “Leaking ceilings”
 - “Go from gem to prison”
 - Teachers in carts in hallways
- Concern with High School complex circulation & signage
- Students unescorted from MS to HS
- Smartboards needed throughout
- Landis Run – “all business”, break up entrance to “relieve anxiety”



Needs Assessment – Findings (2015)

- District-wide
 - Improvements made at vestibule entry for security. Additional card-readers may be needed, district standard on CCTV/Security to be developed.
 - Smart boards or equivalent in all classrooms?
 - Will the district become a one-to-one district with devices? HS, MS, ES, All levels?
 - LED lighting standard?
 - Utilizing water treatment!!



WHERE WE WERE 2006...

2006 Facilities Study

Schools at a Glance

School	Construction/ Renovation Year	Years Since Last Renovation	2006	2007	2008	2009	2010	2011	2012	2013	2014	2015	2016	2017	2018	2019	2020	2021	2022	2023	2024	2025
Manheim Township MS	1968	38	Red	Red	Red	Red	Red	Red	Red	Red	Red	Red	Red	Red	Red	Red	Red	Red	Red	Red	Red	Red
Bucher ES	1972	34	Red	Red	Red	Red	Red	Red	Red	Red	Red	Red	Red	Red	Red	Red	Red	Red	Red	Red	Red	Red
Nitrauer ES	1991	15	Green	Green	Green	Green	Green	Yellow	Yellow	Yellow	Yellow	Yellow	Yellow	Yellow	Yellow	Yellow	Yellow	Yellow	Yellow	Yellow	Yellow	Yellow
Neff ES	1996	10	Green	Green	Green	Green	Green	Green	Green	Green	Green	Green	Yellow	Yellow	Yellow	Yellow	Yellow	Yellow	Yellow	Yellow	Yellow	Yellow
Reidenbaugh ES	1997	9	Green	Green	Green	Green	Green	Green	Green	Green	Green	Green	Green	Yellow	Yellow	Yellow	Yellow	Yellow	Yellow	Yellow	Yellow	Yellow
Brecht ES	2000	6	Green	Green	Green	Green	Green	Green	Green	Green	Green	Green	Green	Green	Green	Green	Yellow	Yellow	Yellow	Yellow	Yellow	Yellow
Schaeffer ES	2003	3	Green	Green	Green	Green	Green	Green	Green	Green	Green	Green	Green	Green	Green	Green	Green	Green	Green	Yellow	Yellow	Yellow
Manheim Township HS	2006	0	Green	Green	Green	Green	Green	Green	Green	Green	Green	Green	Green	Green	Green	Green	Green	Green	Green	Green	Green	Green

Notes:

1. Recently renovated schools may have skipped some system improvements (i.e., interior doors/security hardware) that should be addressed as capital maintenance in the short-term.



WHERE WE ARE TODAY...

2015 Facilities Study

Schools at a Glance

School	Construction/ Renovation Year	Years Since Last Renovation	2015	2016	2017	2018	2019	2020	2021	2022	2023	2024	2025	2026	2027	2028	2029	2030	2031	2032	2033	2034
Manheim Township MS	1968	47	Red	Red	Red	Red	Red	Red	Red	Red	Red	Red	Red	Red	Red	Red	Red	Red	Red	Red	Red	Red
Nitrauer ES	1991	24	Yellow	Orange	Orange	Orange	Orange	Orange	Orange	Orange	Orange	Orange	Orange	Orange	Orange	Orange	Orange	Orange	Orange	Red	Red	Red
Neff ES	1996	19	Green	Yellow	Yellow	Yellow	Yellow	Orange	Orange	Orange	Orange	Orange	Orange	Orange	Orange	Orange	Orange	Orange	Orange	Orange	Orange	Orange
Reidenbaugh ES	1997	18	Green	Green	Yellow	Yellow	Yellow	Yellow	Orange	Orange	Orange	Orange	Orange	Orange	Orange	Orange	Orange	Orange	Orange	Orange	Orange	Orange
Brecht ES	2000	15	Green	Green	Green	Green	Yellow	Yellow	Yellow	Yellow	Orange	Orange	Orange	Orange	Orange	Orange	Orange	Orange	Orange	Orange	Orange	Orange
Schaeffer ES	2003	12	Green	Green	Green	Green	Green	Green	Green	Yellow	Yellow	Yellow	Yellow	Orange	Orange	Orange	Orange	Orange	Orange	Orange	Orange	Orange
Manheim Township HS	2006	9	Green	Green	Green	Green	Green	Green	Green	Green	Green	Green	Yellow	Yellow	Yellow	Yellow	Yellow	Orange	Orange	Orange	Orange	Orange
Bucher ES	2009	6	Green	Green	Green	Green	Green	Green	Green	Green	Green	Green	Green	Green	Green	Yellow	Yellow	Yellow	Yellow	Yellow	Yellow	Orange
Landis Run Intermediate School	2012	3	Green	Green	Green	Green	Green	Green	Green	Green	Green	Green	Green	Green	Green	Green	Green	Green	Green	Yellow	Yellow	Yellow

Notes:

1. Recently renovated schools may have skipped some system improvements (i.e., interior doors/security hardware) that should be addressed as capital maintenance in the short-term.



Key Considerations

Educational philosophy of the community
&
Educational objectives of the school system



Next Steps

- School Board Input
- Community input
facilities@mtwp.net
- Incorporation of School Board and Community input
 - May & June 2016
- Finalization of Report
 - July 2016
- Deliverable of Final Report and Presentation



Questions????

